

 **LEDVANCE**
T5 External LED
Light Tube



LEDVANCE T5 External LED Light Tube Instruction Manual

[Home](#) » [LEDVANCE](#) » LEDVANCE T5 External LED Light Tube Instruction Manual 

Contents

- [1 LEDVANCE T5 External LED Light Tube](#)
- [2 Specifications](#)
- [3 Product Usage Instructions](#)
- [4 LAMP OPERATION](#)
- [5 INSTALLATION](#)
- [6 CURRENT SETTING](#)
- [7 FAQ](#)
- [8 Documents / Resources](#)
 - [8.1 References](#)



LEDVANCE T5 External LED Light Tube



Specifications

- **Product Name:** LED TUBE EXTERNAL T5 / T8 P
- **Power Range:** Various options from 7.3W to 37W
- Compatible with LEDVANCE LED DRIVER EXTERNAL
- Designed as a replacement for T8/T5 fluorescent lamps with G13/G5 bi-pin bases
- **Input Voltage:** 220-240V

Product Usage Instructions

Installation:

- Installation must be executed by a qualified electrician. All wires need to be approved for the existing voltages and protection classes.
- LED TUBE EXT is a single-sided LED tube and must be connected(wired) only on one side. Make sure to follow the DC input notementioned on the LED TUBE product label.
- After rewiring, only LED TUBE EXT can be used in the luminaire. The use of traditional fluorescent tubes or other LED tubes is not permitted anymore.

Current Setting:

LED DRIVER EXTERNAL is a multi-watt driver, so the correct output current must be set before operation using the dip switch on the driver. Refer to the table for the correct settings based on the LEDTUBE model.

SCAN THE QR CODE



www.ledvance.com/ext-system

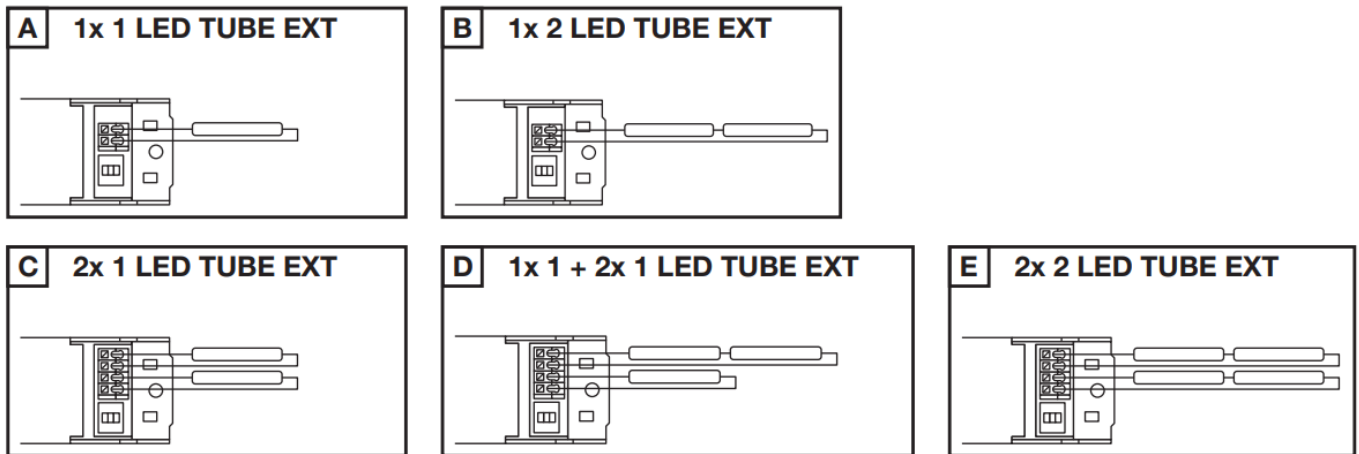
Installation Guide



The LEDVANCE LED TUBE EXTERNAL hereafter referred to as LED TUBE EXT is designed to be powered by below stated LEDVANCE LED DRIVER EXTERNAL.

| Lamp Type | Model | Power (W) | Compatibility |
|----------------------------|-------|---------------|---------------|
| DR EXT DALI-P-1X7 | 37W | 220-240V | — |
| DR EXT DALI-P-2X7 | 26W | 220-240V | — |
| LEDTUBE T8 EXT P 600 | 7.3W | A; B; C; D; E | |
| LEDTUBE T8 EXT P 1200 | 15W | A; C | |
| LEDTUBE T8 EXT P 1500 | 23W | A; C | |
| LEDTUBE T5 EXT HE14 P 549 | 7.3W | A; B; C; D; E | |
| LEDTUBE T5 EXT HO24 P 549 | 10.5W | A; B; C; D; E | |
| LEDTUBE T5 EXT HE21 P 849 | 10.5W | A; B; C; D; E | |
| LEDTUBE T5 EXT HO39 P 849 | 17W | A; C | |
| LEDTUBE T5 EXT HE28 P 1149 | 16W | A; C | |
| LEDTUBE T5 EXT HE35 P 1449 | 18W | A; C | |
| LEDTUBE T5 EXT HO49 P 1449 | 26W | A; C | |
| LEDTUBE T5 EXT HO54 P 1149 | 26W | A; C | |
| LEDTUBE T5 EXT HO80 P 1449 | 37W | A; NO | |

LAMP OPERATION



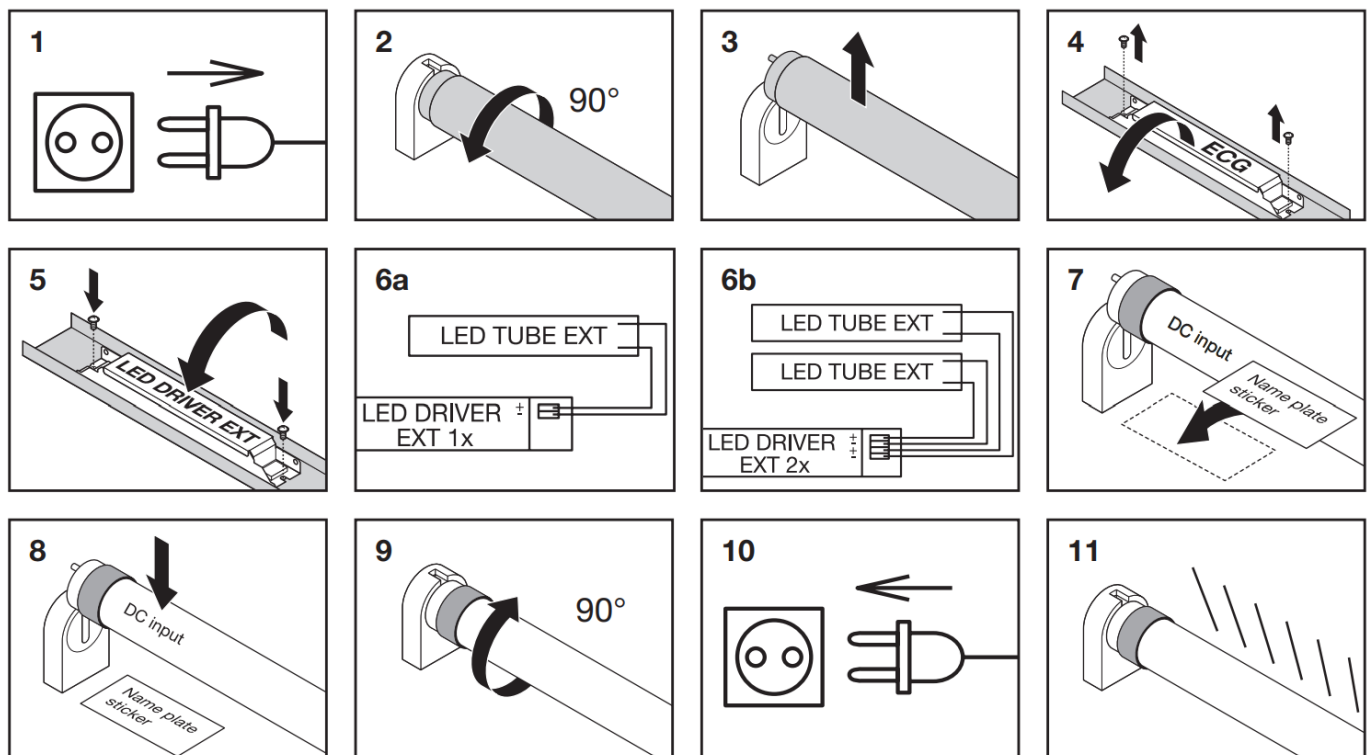
Please visit our website for the latest product information: www.ledvance.com/ext-system

LEDVANCE cannot guarantee the performance of LED TUBE EXT, when powered with different drivers not designed for the LED TUBE EXT. LED TUBE EXT is suitable as replacement for T8/T5 fluorescent lamps with G13/G5 bi-pin bases.

This lamp is designed for general lighting service. It is not allowed to connect LED TUBE EXT on direct mains (220-240V), electromagnetic control gear (CCG), or electric control gear (ECG).

INSTALLATION

Installation must be executed by a qualified electrician. All wires need to be approved for the existing voltages and protection classes



- LED TUBE EXT is a single sided LED TUBE and must be connected (wired) only one side. "DC input" note is mentioned on the LED TUBE product label. Once installation is completed, please fill out new plate sticker (included in LED DRIVER EXT packaging) and stick the name plate close to tube "DC input" side on the

luminaire.

- After rewiring, only LED TUBE EXT can be used in this luminaire. The use of traditional fluorescent tubes or other LEDTUBEs is not permitted anymore. LEDVANCE does not accept any responsibility, warranty or liability when using other types of light sources.

CURRENT SETTING

LED DRIVER EXTERNAL is a multi-watt driver, therefore the correct output current must be set before operation by the dip switch on the driver.5)

DR EXT DALI-P-1X7-37W 220-240

| LED TUBE EXTERNAL | I out (mA) | DIP SWITCH PIN | | |
|---------------------------------|------------|----------------|-----|-----|
| | | 1 | 2 | 3 |
| LEDTUBE T8 EXT P 600 7.3W | 350 | OFF | OFF | OFF |
| LEDTUBE T8 EXT P 1200 15W | 350 | OFF | OFF | OFF |
| LEDTUBE T8 EXT P 1500 23W | 550 | ON | OFF | OFF |
| LEDTUBE T5 EXT HE14 P 549 7.3W | 350 | OFF | OFF | OFF |
| LEDTUBE T5 EXT HO24 P 549 10.5W | 500 | OFF | ON | ON |
| LEDTUBE T5 EXT HE21 P 849 10W | 500 | OFF | ON | ON |
| LEDTUBE T5 EXT HO39 P 849 17W | 400 | OFF | OFF | ON |
| LEDTUBE T5 EXT HE28 P 1149 16W | 400 | OFF | OFF | ON |
| LEDTUBE T5 EXT HE35 P 1449 18W | 450 | OFF | ON | OFF |
| LEDTUBE T5 EXT HO49 P 1449 26W | 600 | ON | OFF | ON |
| LEDTUBE T5 EXT HO54 P 1149 26W | 600 | ON | OFF | ON |
| LEDTUBE T5 EXT HO80 P 1449 37W | 860 | ON | ON | OFF |

DR EXT DALI-P-2X7-26W 220-240

| LED TUBE EXTERNAL | I out (mA) | DIP SWITCH PIN | | |
|---------------------------------|------------|----------------|-----|-----|
| | | 1 | 2 | 3 |
| LEDTUBE T8 EXT P 600 7.3W | 350 | OFF | OFF | OFF |
| LEDTUBE T8 EXT P 1200 15W | 350 | OFF | OFF | OFF |
| LEDTUBE T8 EXT P 1500 23W | 550 | ON | OFF | OFF |
| LEDTUBE T5 EXT HE14 P 549 7.3W | 350 | OFF | OFF | OFF |
| LEDTUBE T5 EXT HO24 P 549 10.5W | 500 | OFF | ON | ON |
| LEDTUBE T5 EXT HE21 P 849 10W | 500 | OFF | ON | ON |
| LEDTUBE T5 EXT HO39 P 849 17W | 400 | OFF | OFF | ON |
| LEDTUBE T5 EXT HE28 P 1149 16W | 400 | OFF | OFF | ON |
| LEDTUBE T5 EXT HE35 P 1449 18W | 450 | OFF | ON | OFF |
| LEDTUBE T5 EXT HO49 P 1449 26W | 600 | ON | OFF | ON |
| LEDTUBE T5 EXT HO54 P 1149 26W | 600 | ON | OFF | ON |

The operating temperature range of LED TUBE EXT is restricted. In case of doubt regarding suitability of the application the manufacturer of this lamp should be consulted. Please find and measure Tc points and max Tc temperatures marked on the product. In case of multi-lamp luminaire application measure Tc max temperature of all installed lamps. Please use a flexible thermo sensor (e.g. „Type K“). Please find additional temperature relevant information at product datasheet. Lamp to be used in dry conditions or in a luminaire that provides protection.

| Replacement of FL | „length (excl. pins)“ | „Storage temperature (Ts)“ | „Ambient temperature (Ta free air)“ |
|--|-----------------------|----------------------------|-------------------------------------|
| LEDTUBE T8 EXT P 600 7.3W | 600 mm | -20°C ... 80°C | -20°C ... 50°C |
| LEDTUBE T8 EXT P 1200 15 W | 1200 mm | -20°C ... 80°C | -20°C ... 50°C |
| LEDTUBE T8 EXT P 1500 23 W | 1500 mm | -20°C ... 80°C | -20°C ... 50°C |
| LEDTUBE T5 EXT HE14 P 549 7.3W | 549 mm | -20°C ... 80°C | -20°C ... 50°C |
| LEDTUBE T5 EXT HO24 P 549 10.5W | 549 mm | -20°C ... 80°C | -20°C ... 50°C |
| LEDTUBE T5 EXT HE21 P 849 10W | 849 mm | -20°C ... 80°C | -20°C ... 50°C |
| LEDTUBE T5 EXT HO39 P 849 17W | 849 mm | -20°C ... 80°C | -20°C ... 50°C |
| LEDTUBE T5 EXT HE28 P 1149 16W | 1149 mm | -20°C ... 80°C | -20°C ... 50°C |
| LEDTUBE T5 EXT HE35 P 1449 18W | 1449 mm | -20°C ... 80°C | -20°C ... 50°C |
| LEDTUBE T5 EXT HO49 P 1449 26W | 1449 mm | -20°C ... 80°C | -20°C ... 50°C |
| LEDTUBE T5 EXT HO54 P 1149 26W | 1149 mm | -20°C ... 80°C | -20°C ... 50°C |
| LEDTUBE T5 EXT HO80 P 1449 37W | 1449 mm | -20°C ... 80°C | -20°C ... 50°C |

1. The **LEDVANCE LED TUBE EXTERNAL** hereafter referred to as LED TUBE EXT is designed to be powered by below stated LEDVANCE LED DRIVER EXTERNAL.
2. Please visit our website for the latest product information: www.ledvance.com/ext-system LEDVANCE cannot guarantee the performance of LED TUBE EXT, when powered with different drivers not designed for the LED TUBE EXT.
3. **LED TUBE EXT** is suitable as replacement for T8/T5 fluorescent lamps with G13/G5 bi-pin bases. This lamp is designed for general lighting service. It is not allowed to connect LED TUBE EXT on direct mains (220-240V), electromagnetic control gear (CCG), or electric control gear (ECG).
4. **Installation** must be executed by a qualified electrician. All wires need to be approved for the existing voltages and protection classes.
5. **LED TUBE EXT** is a single sided LED TUBE and must be connected (wired) only one side. “DC input” note is mentioned on the LED TUBE product label. Once installation is completed, please fill out new plate sticker (included in LED DRIVER EXT packaging) and stick the name plate close to tube “DC input” side on the luminaire. After rewiring, only LED TUBE EXT can be used in this luminaire. The use of traditional fluorescent tubes or other LEDTUBES is not permitted anymore. LEDVANCE does not accept any responsibility, warranty or liability when using other types of light sources.
6. **LED DRIVER EXTERNAL** is a multi-watt driver, therefore the correct output current must be set before

operation by the dip switch on the driver.

7. **The operating temperature range of LED TUBE EXT** is restricted. In case of doubt regarding suitability of the application the manufacturer of this lamp should be consulted. Please find and measure Tc points and max Tc temperatures marked on the product. In case of multi-lamp luminaire application measure the Tc max temperature of all installed lamps. Please use a flexible thermo sensor (e.g. „Type K“). Please find additional temperature-relevant information at product datasheet. Lamp to be used in dry conditions or in a luminaire that provides protection.

LEDVANCE GmbH

- Steinerne Furt 62 86167 Augsburg, Germany
- www.ledvance.com
- LEDVANCE Ltd, Sterling House, 810 Mandarin Court, Warrington, Cheshire, WA1 1GG, United Kingdom

FAQ


Q: Can I connect the LED TUBE EXT directly to mains voltage?

A: No, it is not allowed to connect LED TUBE EXT directly to mains voltage (220-240V).

Q: Can I use other types of drivers with the LED TUBE EXT?

A: LEDVANCE cannot guarantee the performance of LED TUBE EXT when powered with drivers not specifically designed for it. It is recommended to use only the LEDVANCE LED DRIVER EXTERNAL for optimal performance.

Documents / Resources

| | |
|---|---|
|  | <p>LEDVANCE T5 External LED Light Tube [pdf] Instruction Manual T5 HE21 EXT 900 10.5W-840, T5 HE14 EXT 600 7.3W-830, T8 EXT 600 7.3W-840, T5 External LED Light Tube, T5, External LED Light Tube, LED Light Tube, Light Tube</p> |
|---|---|

References

- [LED TUBE EXTERNAL SYSTEM](#)
- [Corporate website | LEDVANCE](#)
- [Corporate website | LEDVANCE](#)
- [LED TUBE EXTERNAL SYSTEM](#)
- [User Manual](#)

[Manuals+](#), [Privacy Policy](#)

This website is an independent publication and is neither affiliated with nor endorsed by any of the trademark owners. The "Bluetooth®" word mark and logos are registered trademarks owned by Bluetooth SIG, Inc. The "Wi-Fi®" word mark and logos are registered trademarks owned by the Wi-Fi Alliance. Any use of these marks on this website does not imply any affiliation with or endorsement.