

LEDVANCE Smart Plus App Installation Guide

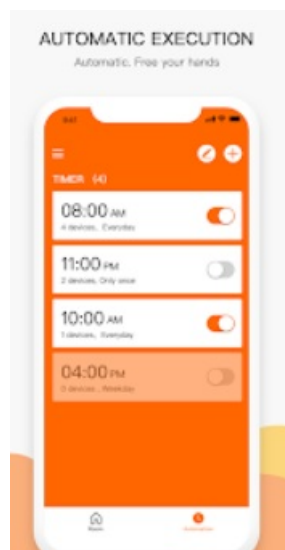
[Home](#) » [LEDVANCE](#) » LEDVANCE Smart Plus App Installation Guide 

Contents

- [1 LEDVANCE Smart Plus App](#)
- [2 SMART+ Installation Guide](#)
- [3 Pairing with Partner App](#)
- [4 Troubleshooting](#)
- [5 INSTALLATION GUIDE](#)
- [6 Documents / Resources](#)
 - [6.1 References](#)
- [7 Related Posts](#)



LEDVANCE Smart Plus App



SMART+ Installation Guide

The SMART+ product is a smart home device that can be paired with a partner app for easy control. Follow the steps below to install and use your SMART+ device:

Pairing with Partner App

1. Download and install the partner app on your smartphone or tablet.
2. Turn on the SMART+ device and switch it on.
3. Open the partner app and search for the SMART+ device.
4. Follow the on-screen instructions to pair the device with the app.

WiFi Login

During the pairing process, you will be prompted to connect the SMART+ device to your WiFi network. Follow the on-screen instructions to complete this step.

Troubleshooting

If you experience any issues during installation or use of your SMART+ device, refer to the FAQ section on the LEDVANCE website. You can also contact customer support via email at smarthome-support@ledvance.com.

Decrease Distance FAQ

If you experience issues with the distance between your SMART+ device and your WiFi network, refer to the FAQ section on the LEDVANCE website for tips on how to resolve this issue.

Reset

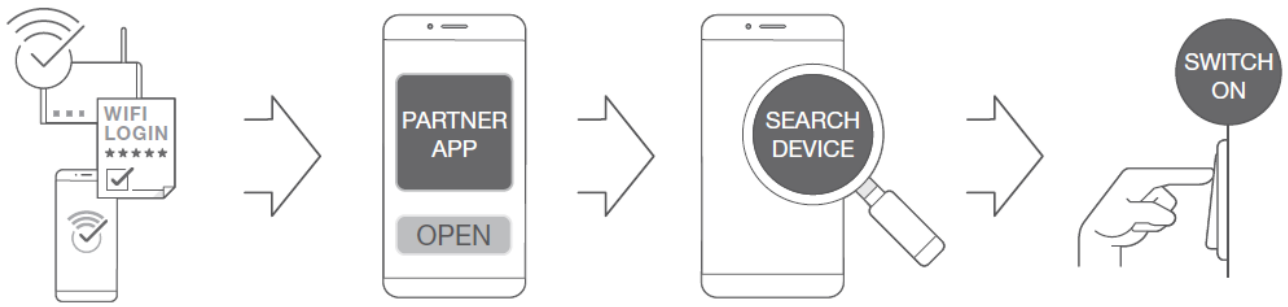
If you need to reset your SMART+ device, press the on/off button 5 times in quick succession.

Note: The product information is as follows:

- C10514265
- G11136721
- 24.02.2022
- LEDVANCE GmbH Steinerne Furt 62 86167 Augsburg, Germany
- Website: www.ledvance.com

INSTALLATION GUIDE

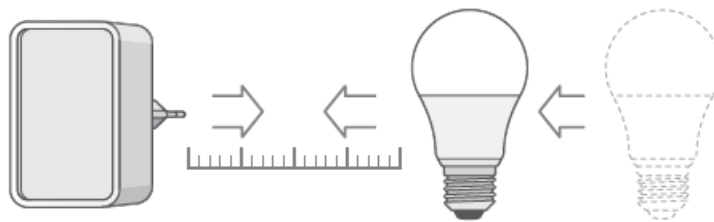
PAIRING WITH PARTNER APP



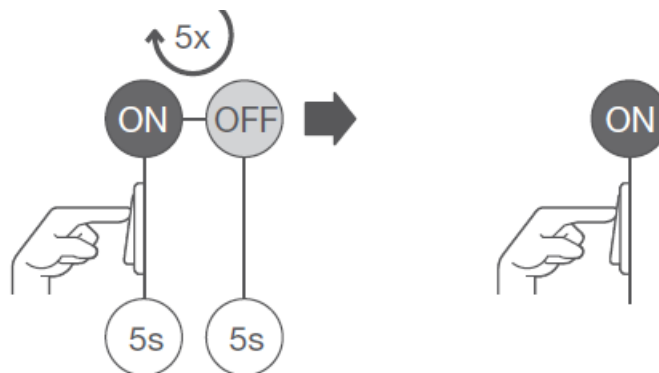
TROUBLESHOOTING



DECREASE DISTANCE



RESET



FAQ



CUSTOMER SUPPORT



<https://smartplus.ledvance.com/faq>

CUSTOMER SUPPORT

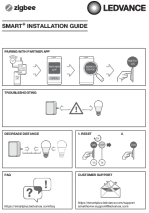
<https://smartplus.ledvance.com/support>
smarthome-support@ledvance.com

Hereby, LEDVANCE GmbH declares that the radio equipment type LEDVANCE SMART+ Device is in compliance with Directive 2014/53/EU. The full text of the EU declaration of conformity is available at the following internet address: smartplus.ledvance.com/declaration-of-conformity. Wireless radio used in Zigbee lamps/luminaires/components 2400–2483.5 MHz, max. RF output power 9.5dBm



LEDVANCE
GmbH Steinerne Furt 62
86167 Augsburg,
Germany www.ledvance.com

Documents / Resources

	<p>LEDVANCE Smart Plus App [pdf] Installation Guide Smart Plus App, Smart Plus, App</p>
---	---

References

- [ce.com](#)
- [Declaration-of-conformity | LEDVANCE](#)
- [Declaration of Conformity | LEDVANCE](#)
- [Vance.com](#)
- [SMART+ FAQ | LEDVANCE](#)
- [Support | LEDVANCE](#)