



## LEDVANCE Smart+ Apps Installation Guide

[Home](#) » [LEDVANCE](#) » LEDVANCE Smart+ Apps Installation Guide 

### Contents

[1 LEDVANCE Smart+ Apps](#)

[2 INSTALLATION GUIDE](#)

[3 Documents / Resources](#)

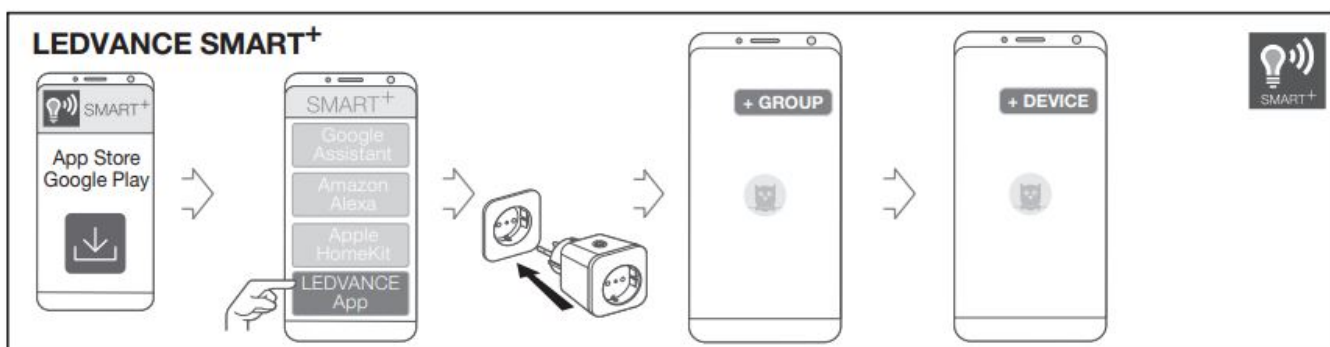
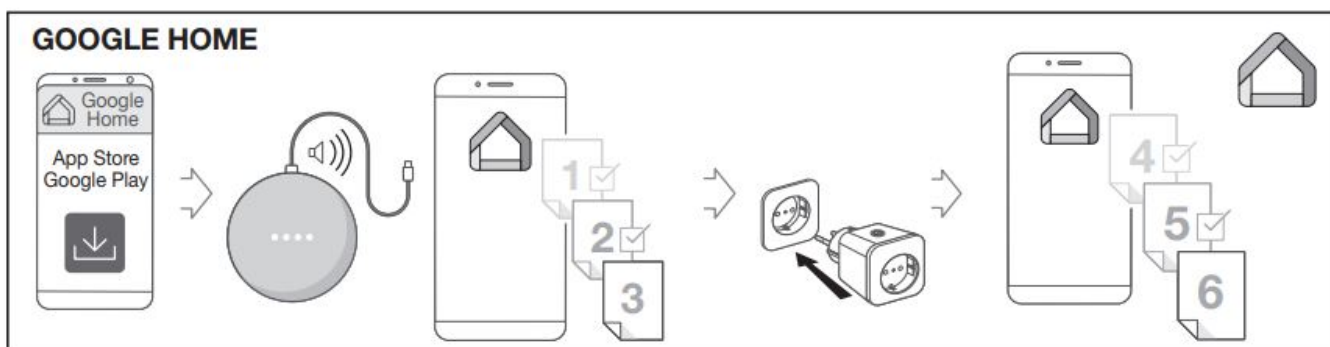
[4 Related Posts](#)



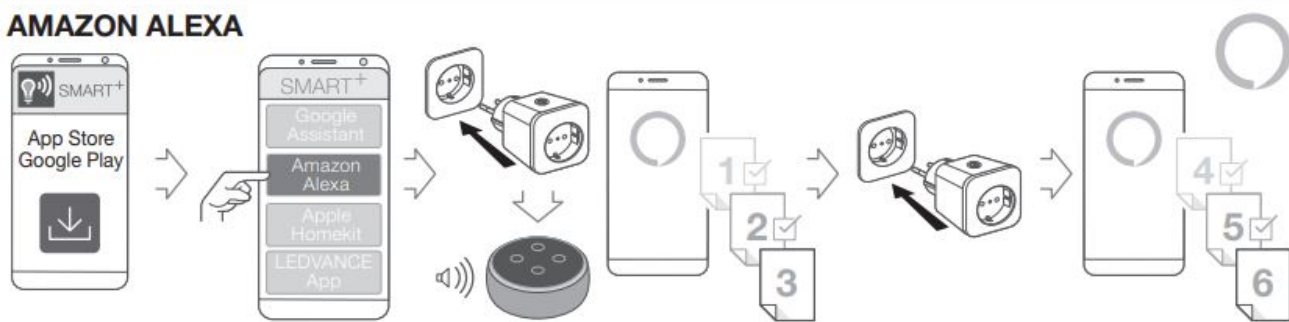
### LEDVANCE Smart+ Apps



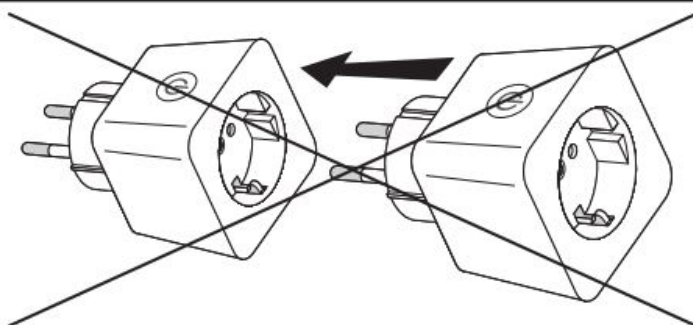
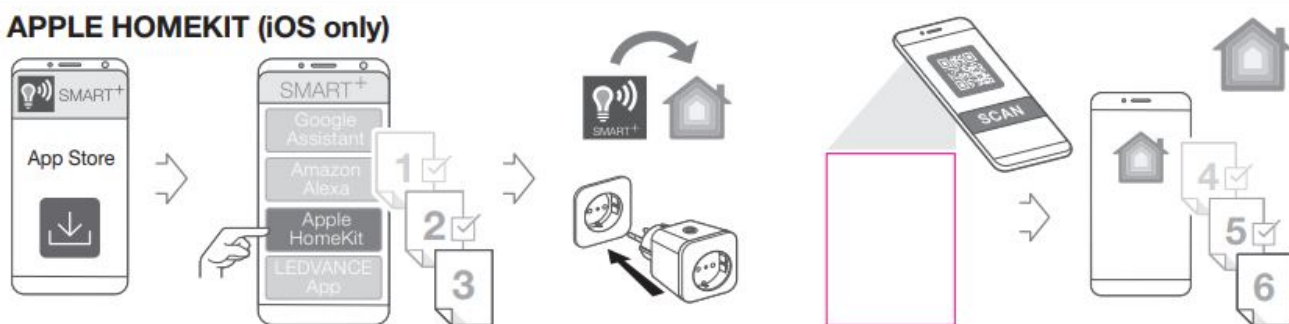
## INSTALLATION GUIDE



## AMAZON ALEXA

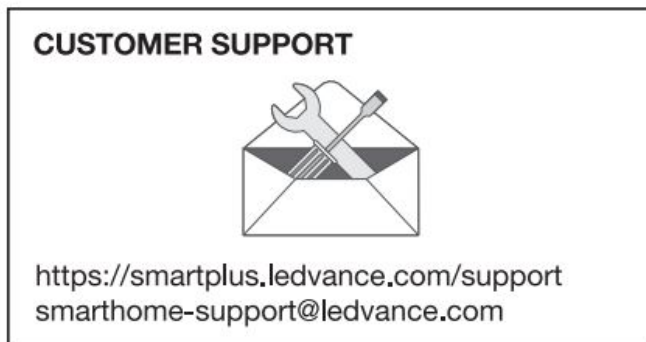
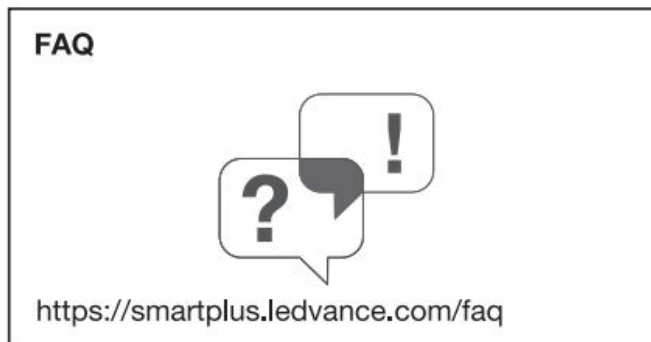
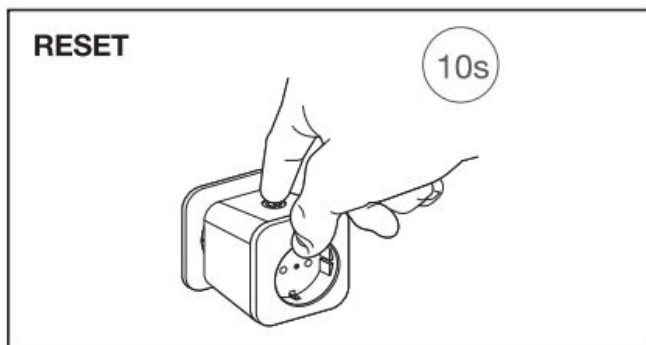
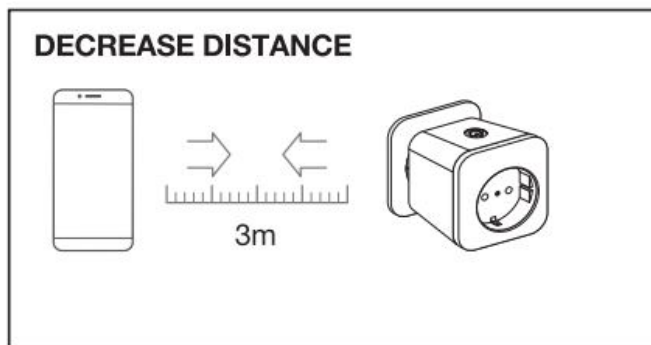


## APPLE HOMEKIT (iOS only)



## TROUBLESHOOTING





© Hereby, LEDVANCE GmbH declares that the radio equipment type LEDVANCE SMART+ Device is in compliance with Directive 2014/53/EU. The full text of the EU declaration of conformity is available at the following internet address: [smartplus.ledvance.com/declaration-of-conformity](https://smartplus.ledvance.com/declaration-of-conformity). Wireless radio used in Bluetooth lamps/ luminaires /components 2402–2480 MHz, max. RF output power 9.5dBm. The SMART+ Plug/Plug Outdoor switches connected appliances without separating them from the mains. Under adverse conditions, very high capacitive and inductive loads may lead to destruction of the device or may reduce the number of switching cycles. Devices building up heat must be separated from the mains, i. e. from SMART+ Plug/Plug Outdoor to avoid accidental activation. Please make sure to disconnect SMART+ Plug/Plug Outdoor from the mains voltage before undertaking any maintenance works. In case of disconnection of the mains (i. e. power outage) the SMART+ Plug/Plug Outdoor will remain in stand-by mode. Please do not use the SMART+ Plug/Plug Outdoor together with medical devices. The plug is to be installed near the device and must be readably accessible. Intended for use in dry rooms only. De-energised only with plug disconnected. Do not operate when covered. Warning:

Do not insert in a row  
**Documents / Resources**

	<p><b>LEDVANCE Smart+ Apps</b> [pdf] Installation Guide  Smart Apps, Smart, Apps</p>
--	--