



LEDVANCE LEDTUBE T5 HF High Output Instructions

[Home](#) » [LEDVANCE](#) » LEDVANCE LEDTUBE T5 HF High Output Instructions 

Contents

- [1 LEDVANCE LEDTUBE T5 HF High Output Instructions](#)
 - [1.1 Instructions on HF \(ECG\) compatible ballast](#)
- [2 Documents / Resources](#)
 - [2.1 References](#)
- [3 Related Posts](#)

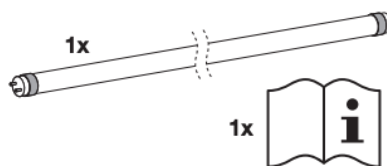
LEDVANCE LEDTUBE T5 HF High Output Instructions



ECG Compatibility



TUBE FINDER Web-app



Installation Guide



Installations-Anleitung

It is mandatory to operate LEDVANCE LED Tubes only with compatible ECGs listed at TUBE FINDER Web app www.ledvance.com/tubefinder or at <https://www.ledvance.com/professional/services/led-lamps-compatibility/ecg-compatibility/index.jsp>

File name: LED TUBE T8 UNIVERSAL, T8 HF, T5 HF Gen11 ballast compatibility 2023

LEDVANCE does not accept any responsibility, warranty or liability when using ECGs not mentioned, marked as non-compatible ECGs or when using successor /different Reference No. models of tested ballasts.

LED TUBE T5 HF is suitable as replacement for T5 fluorescent lamps with G5 bi-pin bases. LED TUBE T5 HF tubes can be fitted as a replacement into luminaires operating on electronic control gear (HF).

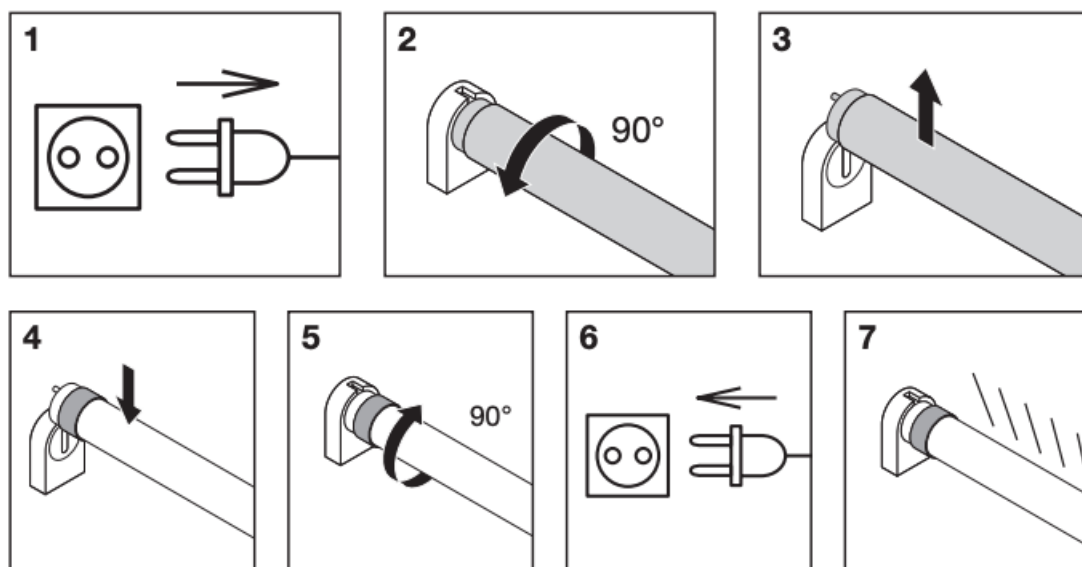
1. The operating temperature range of LED TUBE T5 HF is restricted. In case of doubt regarding suitability of the application please measure Tc max temperature on the product. In case of multi lamp luminaire application

- measure Tc max temperature of all installed lamps. Please use a flexible thermosensor (e.g. "Type K")
- LED TUBE T5 HF operated above Tc max can lead to premature aging and failure of devices.
 - LED TUBE T5 HF emits light only with a limited beam angle, not like a fluorescent tube with 360° output.
 - The LED TUBE T5 HF is designed for general lighting application (excluding for example explosive atmosphere).



ECG ✓		LED TUBE T5 HF	220-240V AC	EL	⚡	⚡	⚡
GB	Meaning	Compatible with HF	Not suitable to use on 220-240V AC	Lamp not suitable for emergency operation	Lamps to be used in dry conditions or in a luminaire that provides protection	Dimming not allowed	Lamp suitable for high frequency operation

Instructions on HF (ECG) compatible ballast



	Replacement of T5 FL ¹	Storage temperature (Ts) ²	Ambient temperature (Ta) of lamp ³
LED TUBE T5 HF HO80 P 1449 36W 8XX	80W: 1449mm	-20°C ... 80°C	-20°C ... 45°C
LED TUBE T5 HF HO54 P 1149 26W 8XX	54W: 1149mm	-20°C ... 80°C	-20°C ... 45°C
LED TUBE T5 HF HO49 P 1449 26W 8XX	49W: 1449mm	-20°C ... 80°C	-20°C ... 45°C
LED TUBE T5 HF HE35 P 1449 18W 8XX	35W: 1449mm	-20°C ... 80°C	-20°C ... 45°C
LED TUBE T5 HF HE28 P 1149 16 W 8XX	28W: 1149mm	-20°C ... 80°C	-20°C ... 45°C
LED TUBE T5 HF HE21 P 849 10W 8XX	21W: 849mm	-20°C ... 80°C	-20°C ... 45°C
LED TUBE T5 HF HE14 P 549 7W 8XX	14W: 549mm	-20°C ... 80°C	-20°C ... 45°C

(8XX = 3000, 4000K)


¹ Replacement of T5 FL

² GB Storage temperature (Ts)

³ GB Ambient temperature (Ta) of lamp

1. Installations on HF (ECG) compatible ballast. Please check the latest update of the compatibility list <https://www.ledvance.com/professional/services/led-lamps-compatibility/ecg-compatibility/index.jsp> File name: LED TUBE T8 UNIVERSAL, T8 HF, T5 HF Gen11 ballast compatibility 2023.

Documents / Resources

	<p>LEDVANCE LEDTUBE T5 HF High Output [pdf] Instructions LEDTUBE T5 HF High Output, LEDTUBE T5, HF High Output, High Output, Output</p>
---	---

References

- [Services and Tools | LEDVANCE | LEDVANCE](#)
- [LED lamps compatibility | LEDVANCE](#)
- [ECG compatibility | LEDVANCE](#)
- [Corporate website | LEDVANCE](#)
- [Tube Finder | LEDVANCE](#)
- [Corporate website | LEDVANCE](#)
- [Professional Home | LEDVANCE](#)
- [Services and Tools | LEDVANCE | LEDVANCE](#)
- [LED lamps compatibility | LEDVANCE](#)
- [ECG compatibility | LEDVANCE](#)