



**LDVAL PAN0606**  
**Panel Plus Led**  
**Tri Colour Led**



# LEDVANCE LDVAL PAN0606 Panel Plus Led Tri Colour Led Instruction Manual

[Home](#) » [LEDVANCE](#) » LEDVANCE LDVAL PAN0606 Panel Plus Led Tri Colour Led Instruction Manual 

## Contents

- [1 LDVAL PAN0606 Panel Plus Led Tri Colour Led](#)
- [2 Specifications](#)
- [3 INSTALLATION](#)
- [4 Suspension Kit](#)
- [5 WARRANTY AGAINST DEFECTS](#)
- [6 CONTACT](#)
- [7 Documents / Resources](#)
  - [7.1 References](#)
- [8 Related Posts](#)



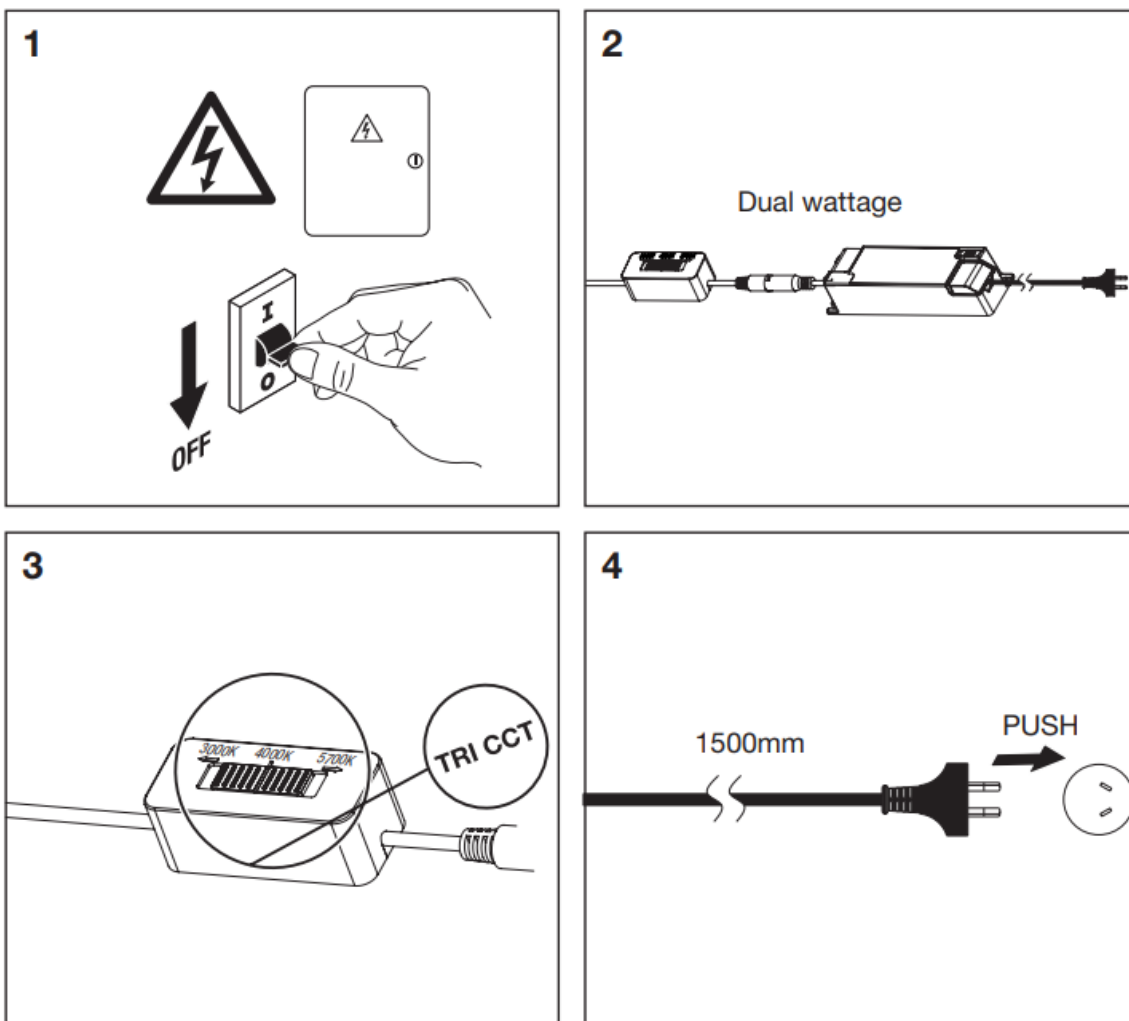
## LDVAL PAN0606 Panel Plus Led Tri Colour Led

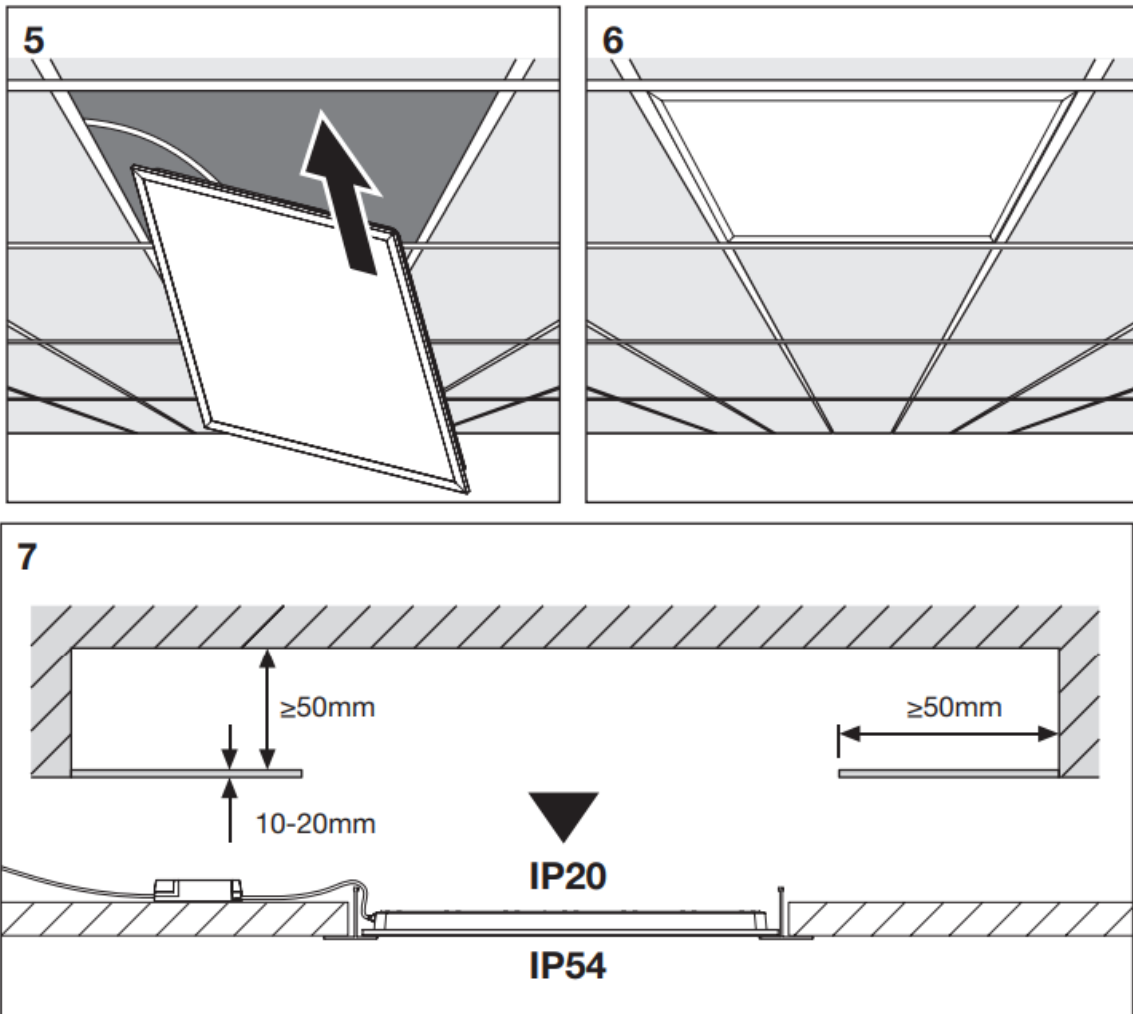


## Specifications

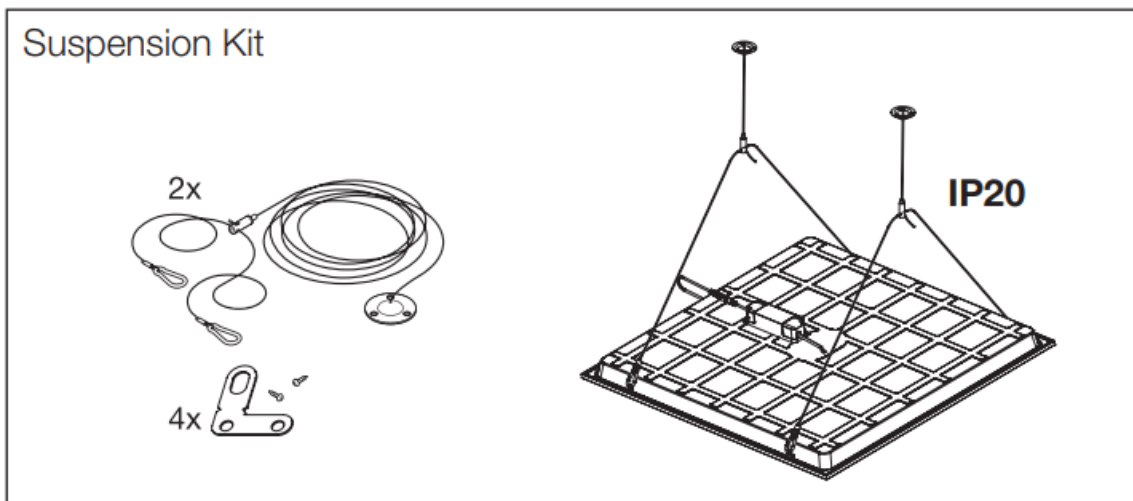
- **Model:** LDVAL PAN0606
- **Wattage:** 33/27W
- **Color Temperature:** 3000K/4000K/5700K
- **Dimensions (L x W x H):** 595mm x 595mm x 32mm
- **Weight:** 1834g
- **IP Rating:** IP20
- **Input Voltage:** VAC
- **Frequency:** Hz
- **Power Factor:** PF
- **Surge Protection:** Yes
- **Lifespan:** 50000 hours

## INSTALLATION





## Suspension Kit



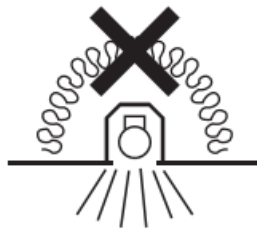
Suspension kit not included, please purchase separately

## WARNINGS

- If the external flexible cable or cord of this luminaire is damaged, it shall be exclusively replaced by the manufacturer or his service agent or a similarly qualified person in order to avoid a hazard.
- This product must be installed by a licensed electrician strictly in accordance with the current revision of AS/NZS 3000 – Electrical Installations (Australian/New Zealand Wiring Rules).
- Avoid touching the LEDs.
- Please do not attempt to disassemble or change the construction of the luminaire or replace any of the parts to

avoid the possibility of injury or product failure.

- Please keep this manual for future reference.
- This product is designed for indoor use only.
- This luminaire is designed for ceiling-recessed installation only (other mounting options available with panel accessories).
- The light source contained in this luminaire shall only be replaced by the manufacturer or service agent or a similarly qualified person.
- Please note that the fixture is equipped with standard surge protection only. To protect the fixture from sags, surges, and lightning strikes, additional surge protectors must be deployed on the primary side.
- The product is not suitable for covering with thermal insulating materials.



## WARRANTY AGAINST DEFECTS

Your LED VALUE PANEL fitting from LEDVANCE comes with a product warranty of 5 years for quality assurance, the terms and conditions of which are set out in this document. The Warranty applies exclusively to LED Light Fittings from LEDVANCE purchased within Australia and New Zealand for normal domestic or commercial use. The Warranty is offered to you by:

- LEDVANCE Pty Ltd
- Unit 3, 83 Derby St
- Silverwater, NSW, 2128
- Phone contact: 1300 467 726
- Email address: [technical.au@ledvance.com](mailto:technical.au@ledvance.com)

**IMPORTANT:** Our goods come with guarantees that cannot be excluded under the Australian Consumer Law. You are entitled to a replacement or refund for a major failure and compensation for any other reasonably foreseeable loss or damage. You are also entitled to have the goods repaired or replaced if the goods fail to be of acceptable quality and the failure does not amount to a major failure.

## CONTACT

- LEDVANCE Pty Ltd
- ABN 34 050 103 181
- Unit 3, 83 Derby Street Silverwater, NSW, 2128, Australia Ph +61 29481 8399
- [www.ledvance.com.au](http://www.ledvance.com.au)

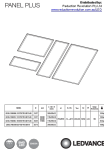
## Distributed by:

- Reduction Revolution Pty Ltd

- [www.reductionrevolution.com.au/LED](http://www.reductionrevolution.com.au/LED)



## Documents / Resources

	<p><b><a href="#">LEDVANCE LDVAL PAN0606 Panel Plus Led Tri Colour Led</a></b> [pdf] Instruction Manual  LDVAL PAN0606, LDVAL PAN0312, LDVAL PAN0612, LDVAL PAN0306, LDVAL PAN0606 Panel Plus Led Tri Colour Led, LDVAL PAN0606, Panel Plus Led Tri Colour Led, Plus Led Tri Colour Led, Led Tri Colour Led, Tri Colour Led, Colour Led, Led</p>
---	--

## References

- [R LED Lights - Online Lighting Store Australia](#)
- [User Manual](#)

### Manuals+, Privacy Policy

This website is an independent publication and is neither affiliated with nor endorsed by any of the trademark owners. The "Bluetooth®" word mark and logos are registered trademarks owned by Bluetooth SIG, Inc. The "Wi-Fi®" word mark and logos are registered trademarks owned by the Wi-Fi Alliance. Any use of these marks on this website does not imply any affiliation with or endorsement.