



**4058075570917  
Smart Plus WiFi  
Remote Control**



# LEDVANCE 4058075570917 Smart Plus WiFi Remote Control Installation Guide

[Home](#) » [LEDVANCE](#) » LEDVANCE 4058075570917 Smart Plus WiFi Remote Control Installation Guide 

## Contents

- [1 LEDVANCE 4058075570917 Smart Plus WiFi Remote Control](#)
- [2 Specifications](#)
- [3 FAQ](#)
- [4 What In Box](#)
- [5 Product Overview](#)
- [6 App Instruction](#)
- [7 Product Usage Instructions](#)
- [8 PAIRING](#)
- [9 GROUP SELECT](#)
- [10 CHANGE SCENE](#)
- [11 UNPAIRING & RESET](#)
- [12 BATTERY CHECK](#)
- [13 Documents / Resources](#)
  - [13.1 References](#)
- [14 Related Posts](#)



**LEDVANCE 4058075570917 Smart Plus WiFi Remote Control**



## Specifications

- Product Name: SMART+ WIFI INSTALLATION REMOTE CONTROL
- Model Number: SMHAeRrTe+
- EAN: 4058075570917
- Power Source: 2x AAA batteries (not included)
- Color Temperature: 6500K to 2700K
- Dimensions: 120mm x 41mm

## Product Usage Instructions

### Pairing and Group Selection:

To pair the remote control with your devices, follow these steps:

1. Ensure the remote is in pairing mode (PAIRING ON).
2. Select the desired group (A, B, or both A and B).

3. Press and hold the ON button for more than 5 seconds to complete pairing.

### Changing Light Scenes:

To change light scenes using the remote control:

1. Select the desired scene button (1-5).
2. Press ON or OFF to activate or deactivate the scene.
3. You can also create custom scenes by following the instructions on the manual.

### Battery Check and Replacement:

To check the battery status:

1. Press and hold the BATTERY CHECK button for more than 5 seconds.
2. The LED indicator will show the remaining battery life (6 months at 5 clicks per day).
3. If the battery needs replacement, open the battery compartment and replace with 2 new AAA batteries.

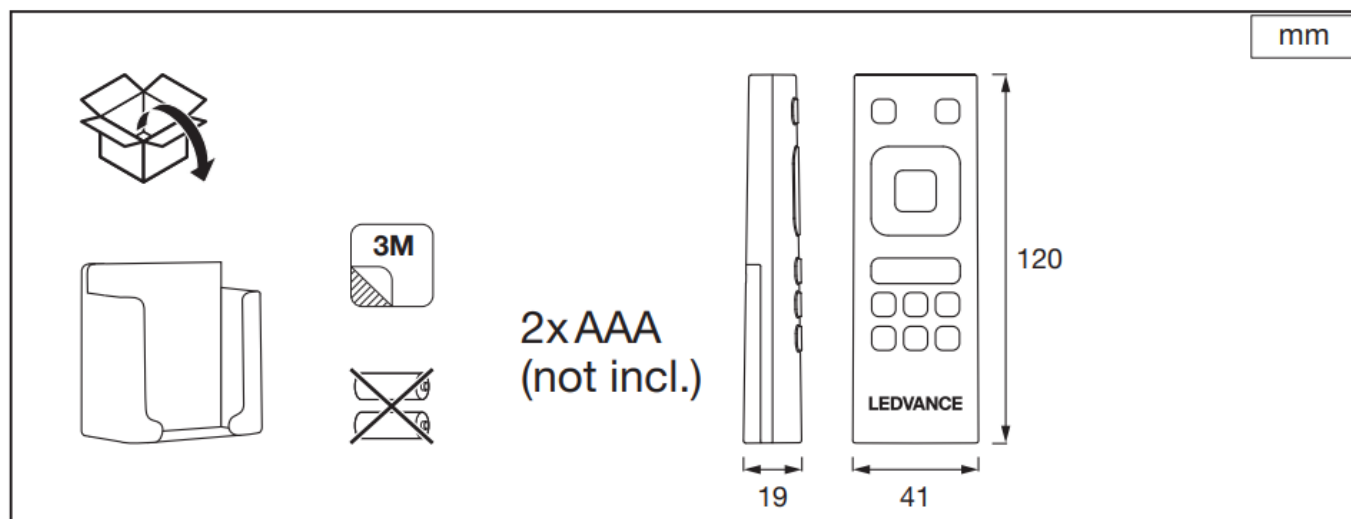
### Customer Support:

If you need further assistance or have any questions, visit our customer support page at [LEDVANCE Customer Support](#).

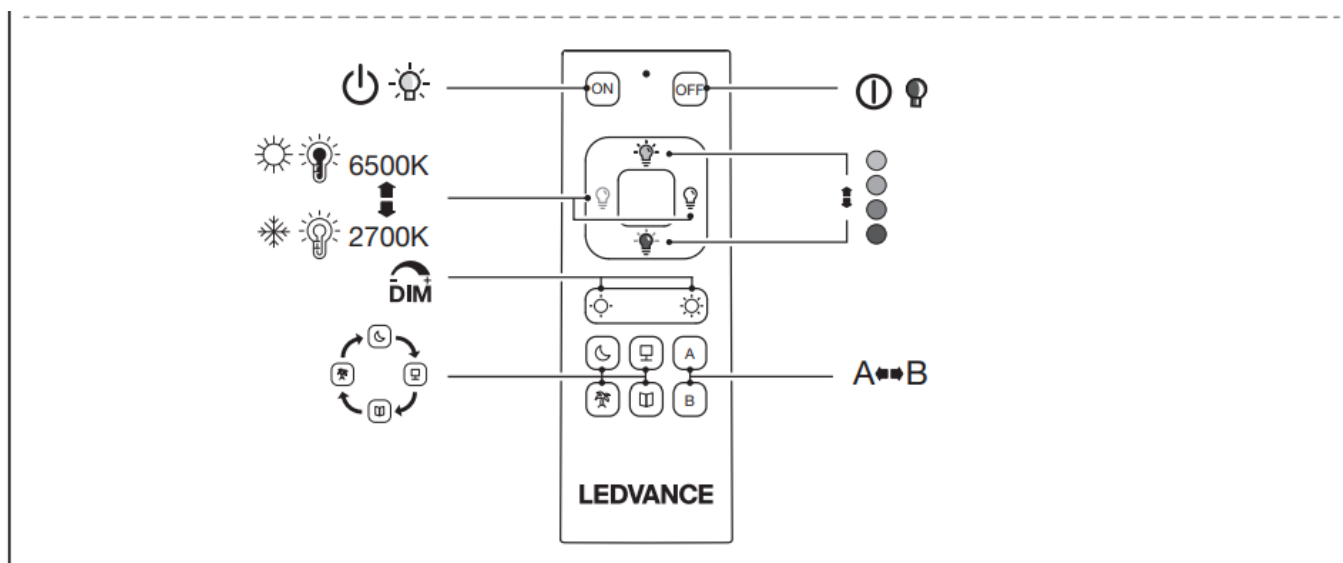
### FAQ

- **Do you want to enable the RC ability?**
  - To enable the RC ability, select OK using the remote control.
- **How many devices can be connected?**
  - You can connect up to 15 devices, although this may vary based on your WiFi router settings.
- **Where can I find the EU Declaration of Conformity?**
  - The full text of the EU Declaration of conformity is available at [this link](#).

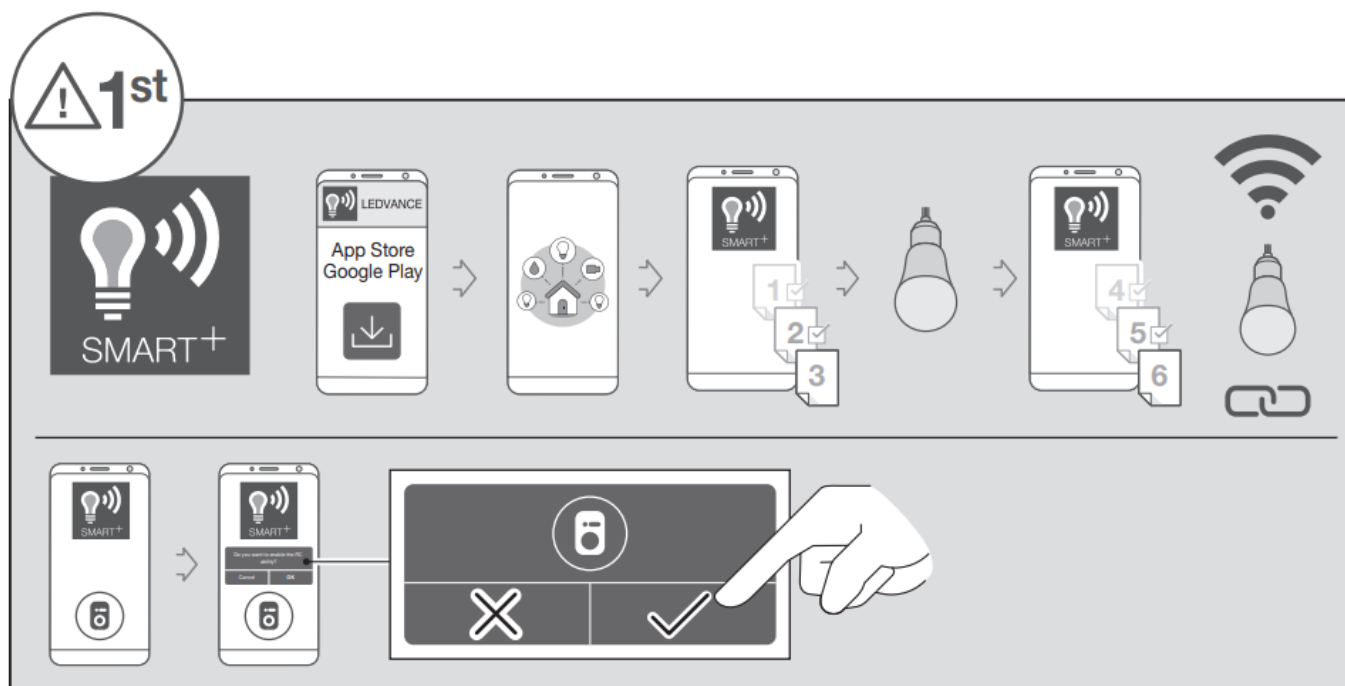
### What In Box



## Product Overview

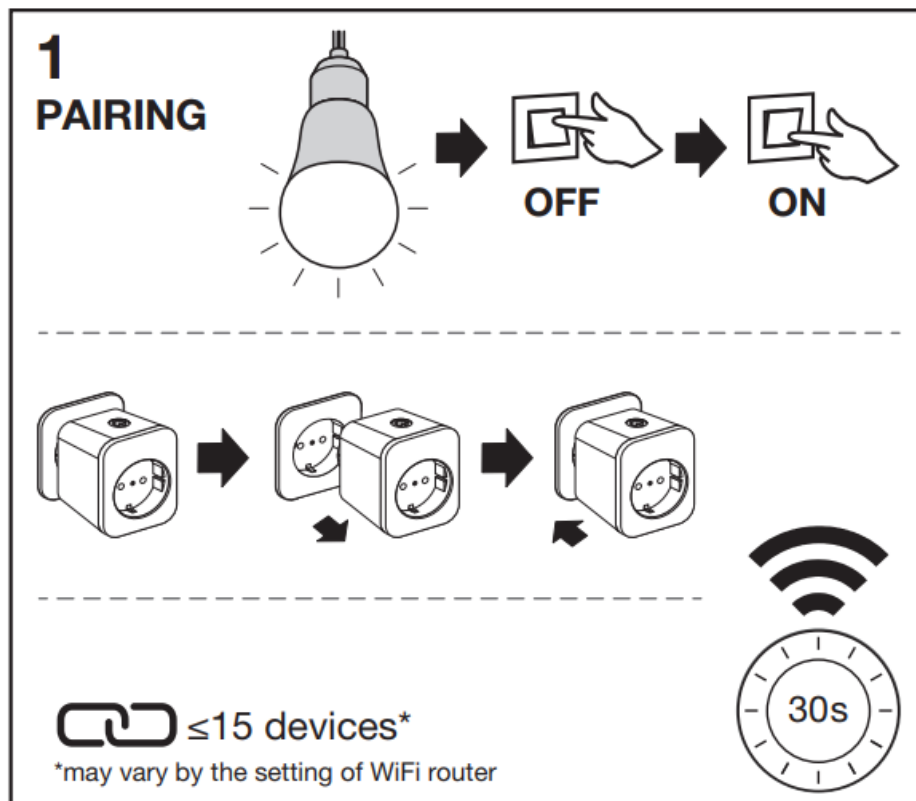


## App Instruction

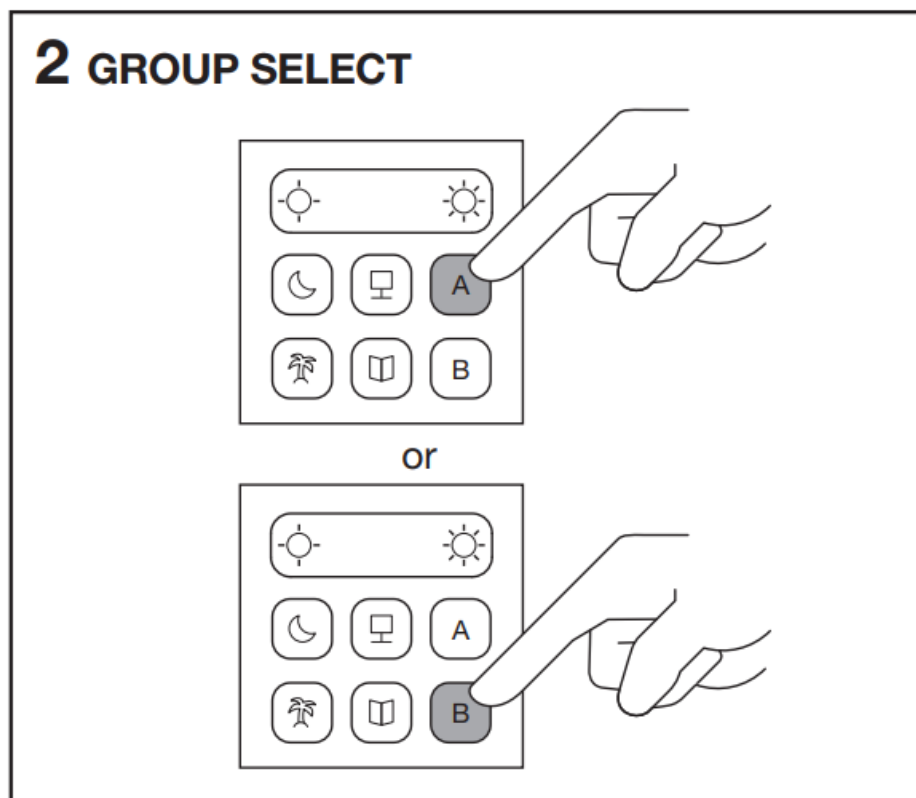


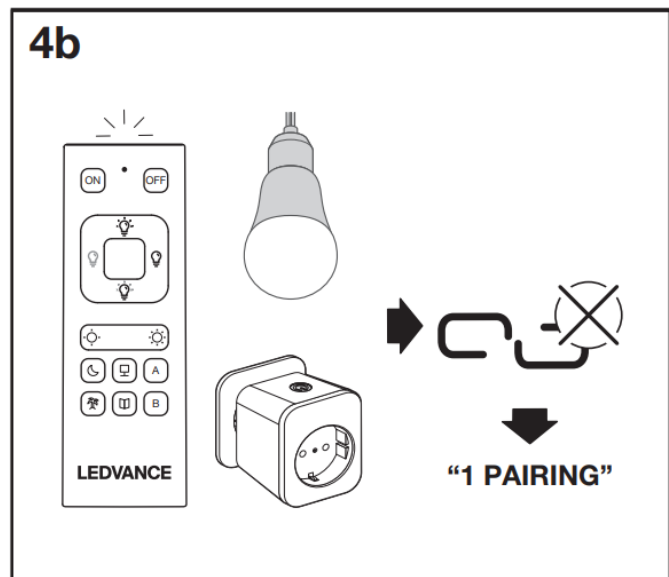
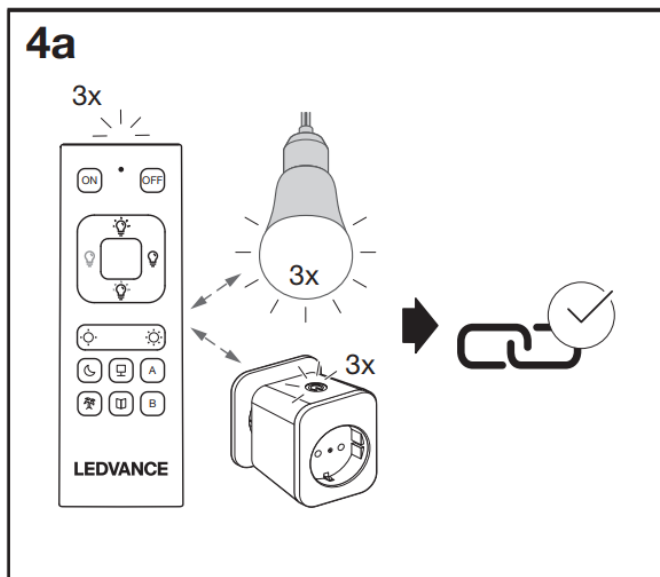
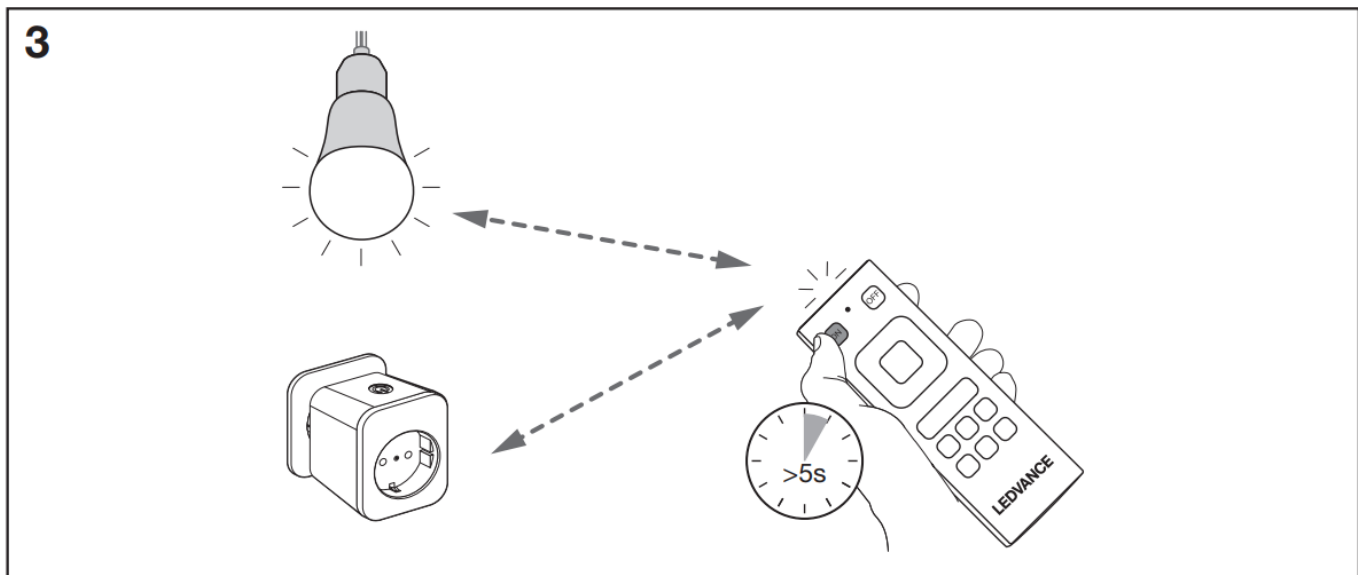
## Product Usage Instructions

## PAIRING



## GROUP SELECT





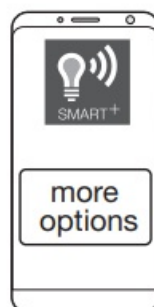
## CHANGE SCENE

1. Set light scene

via



via

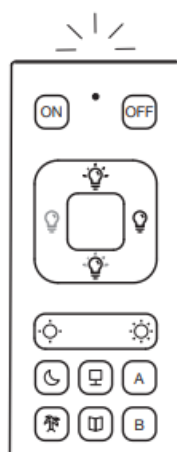


or

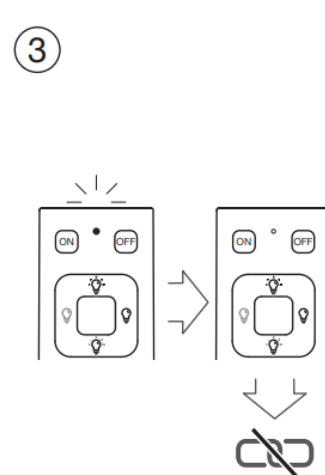
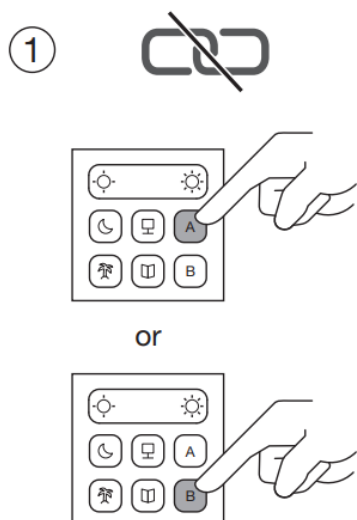
2. Select scene button



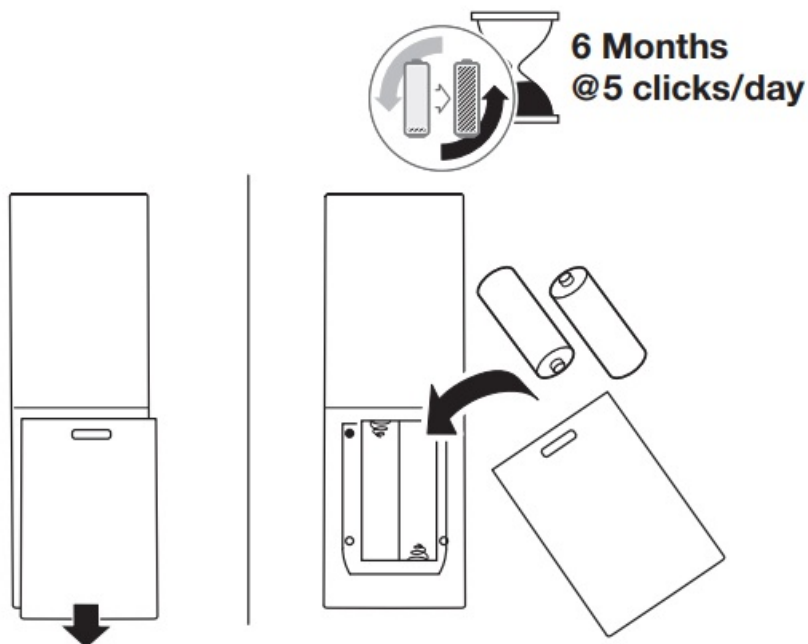
### 3. Save scene



## UNPAIRING & RESET



## BATTERY CHECK



## CUSTOMER SUPPORT

- <https://www.ledvance.com/consumer/smart/faq/>

## Declaration

Hereby, LEDVANCE GmbH declares that the radio equipment type LEDVANCE SMART+ Device is in compliance with Directive 2014/53/EU. The full text of the EU Declaration of Conformity is available at the following internet address: [smartplus.ledvance.com/declaration-of-conformity](https://www.ledvance.com/consumer/smart/faq/). Wireless radio used in WIFI lamps/ luminaires /components 2412–2484 MHz, max. RF output power 16dBm. Wireless radio used in Bluetooth lamps/ luminaires /components 2402–2480 MHz, max. RF output power 9.5dBm



Replacement of a battery with an incorrect type can defeat safeguard (for example, in the case of some lithium battery types). Altitude during operation: 2000 m.



- LEDVANCE GmbH
- Steinerne Furt 62






- 86167 Augsburg, Germany
- [www.ledvance.com](http://www.ledvance.com)

## Documents / Resources

 The image shows the cover of a technical document titled "SMART WIFI INSTALLATION REMOTE CONTROL". It features a line drawing of the remote control and the LEDVANCE logo.	<p><a href="#">LEDVANCE 4058075570917 Smart Plus WiFi Remote Control</a> [pdf] Installation Guide 4058075570917, 4058075570917 Smart Plus WiFi Remote Control, Smart Plus WiFi Remote C ontrol, WiFi Remote Control, Remote Control, Control</p>
--	--

## References

- [ce.com](http://ce.com)
-  [Declaration of Conformity | LEDVANCE](#)
-  [Corporate website | LEDVANCE](#)
-  [Corporate website | LEDVANCE](#)
- [User Manual](#)

### Manuals+, Privacy Policy

This website is an independent publication and is neither affiliated with nor endorsed by any of the trademark owners. The "Bluetooth®" word mark and logos are registered trademarks owned by Bluetooth SIG, Inc. The "Wi-Fi®" word mark and logos are registered trademarks owned by the Wi-Fi Alliance. Any use of these marks on this website does not imply any affiliation with or endorsement.