

LEDLUX CL2290F10 Flexible PCB Memory Touch Switch Dimmer Instruction Manual

[Home](#) » [LEDLUX](#) 

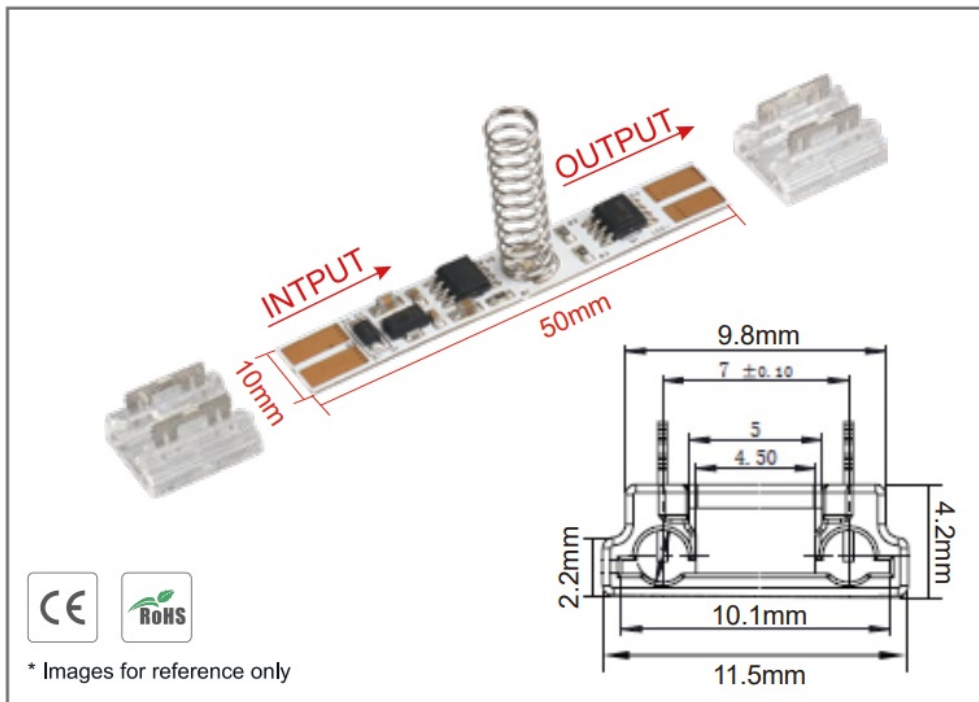
CL2290F10 Flexible PCB Memory Touch Switch Dimmer Instruction Manual

Contents

- [1 Functions](#)
- [2 Operations](#)
- [3 Installation Steps](#)
- [4 Documents / Resources](#)

Functions

- Touch switch ON/OFF with dimming and memory.
- Input Voltage: 12V-24V DC.
- Input wire outer diameter: 1.9mm MAX
- Output Voltage: 12V-24V DC.
- LED Strip Width: 10mm
- Input Current: 3A.
- Load around 36W for 12V, and 72W for 24V.
- Dimension: 50*10mm.
- Height of Spring: 20mm.

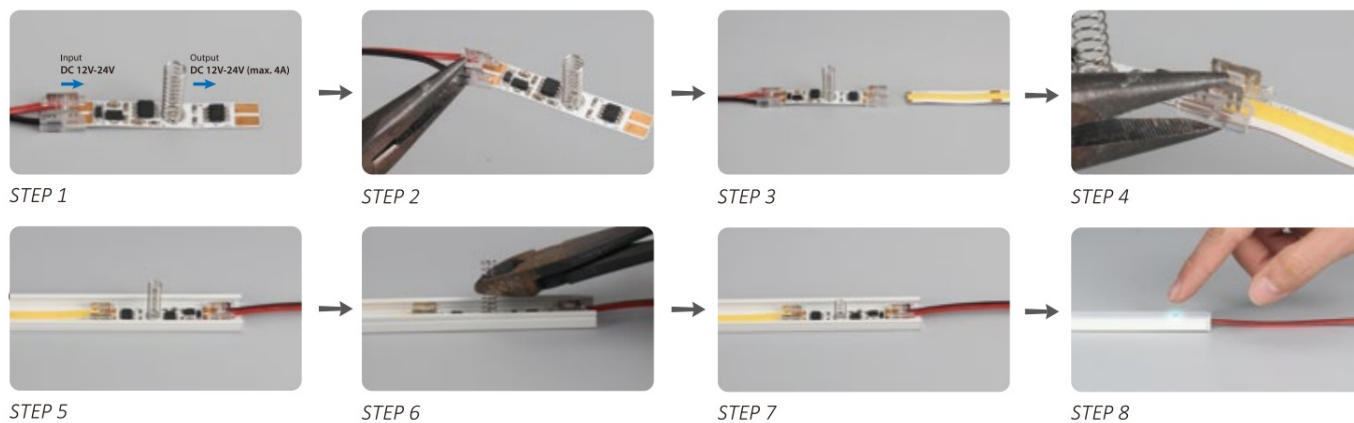


V+	DC input positive
V-	DC input negative
LED+	Output to LED Strip positive
LED-	Output to LED Strip negative

Operations

- The conductive spring needs to be covered by insulation material such as glass, plastic or ceramic material, thickness 3mm.
- With memory internal switch on/off and dimmer:
 1. Originally "OFF" when the power is connected.
 2. Quick touch (time is less than 550ms) can turn the light on and off. One touch to turn on; Mother touch to turn off. The lamp is 90% bright when it is on.
 3. Hold on touching (time is above 550ms) can adjust the brightness endlessly; It will reduce the brightness endlessly to the minimum in 3 seconds holding on when the light on.
 4. Quick touch and hold on touching can be chosen anytime without any collision.
 5. This sensor will memorize the status of the dimming in DC12V-24V.

Installation Steps



Note:

1. Height Requirement of Spring: Cut the Spring 5mm above the PC Cover. It is easy to cause a short circuit if the spring is too long with the PC cover is installed.
2. The function/program can be customized, made different needs, such as longer time for stay on, etc.

Ledlux™

REV:A0

Documents / Resources

	<p>LEDLUX CL2290F10 Flexible PCB Memory Touch Switch Dimmer [pdf] Instruction Manual FTD003-10, CL2290F10, Flexible PCB Memory Touch Switch Dimmer, CL2290F10 Flexible PCB Memory Touch Switch Dimmer, PCB Memory Touch Switch Dimmer, Touch Switch Dimmer, Switch Dimmer, Dimmer</p>
--	---