

LEDLENSER
**C7 Classic
Torch**



LEDLENSER C7 Classic Torch Instruction Manual

[Home](#) » [LEDLenser](#) » LEDLENSER C7 Classic Torch Instruction Manual 

Contents

- [1 LEDLENSER C7 Classic Torch](#)
- [2 Product Specifications](#)
- [3 Product Usage Instructions](#)
- [4 What's in a box?](#)
- [5 FAQs](#)
- [6 Documents / Resources](#)
 - [6.1 References](#)
- [7 Related Posts](#)



LEDLENSER C7 Classic Torch



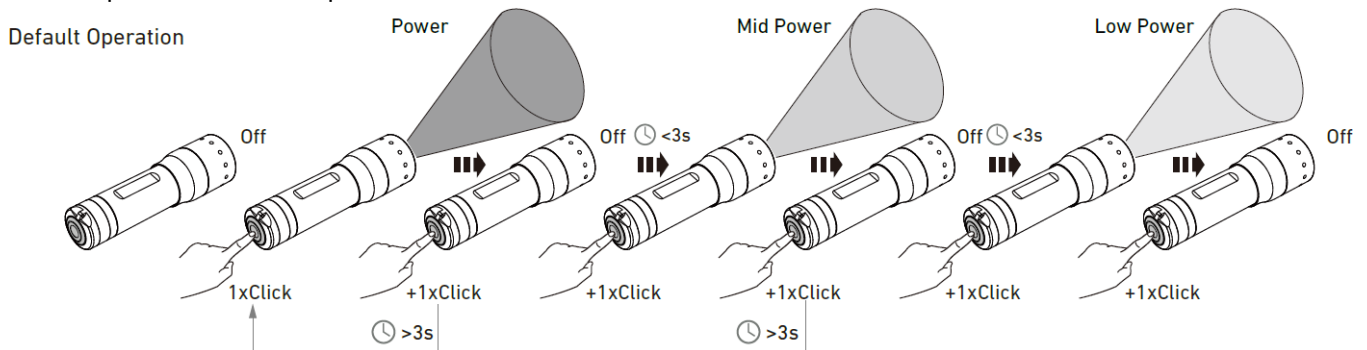
Product Specifications

- Model: C7 CLASSIC
- Power Source: 4x AAA batteries
- Default Operation: Off
- Settings: Mid Power, Low Power, Off (3s)
- Additional Features: Lanyard attachment

Product Usage Instructions

Powering On/Off

To power on the C7 CLASSIC, press the power button. To switch between Mid Power, Low Power, and Off modes, press the power button multiple times.



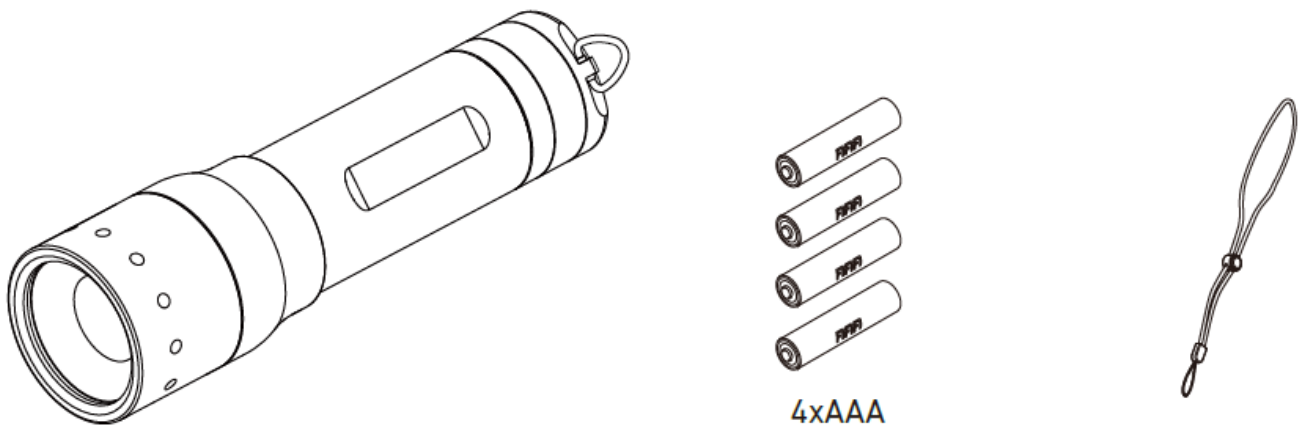
Changing Modes

To change to Mid Power mode, press the power button once. For Low Power mode, press the power button twice. To turn off the device, press and hold the power button for 3 seconds.

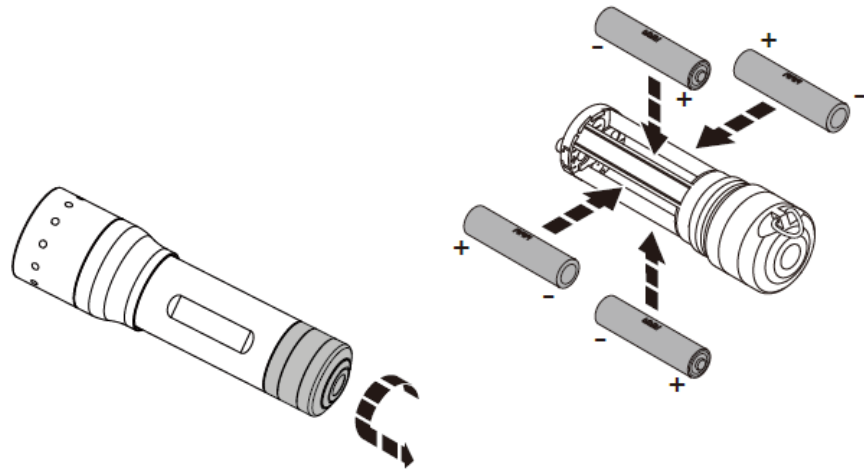
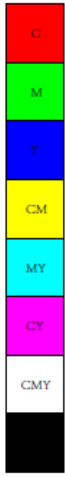
Attaching Lanyard

Use the provided lanyard and attach it to the designated lanyard attachment point on the C7 CLASSIC. Ensure it is securely fastened.

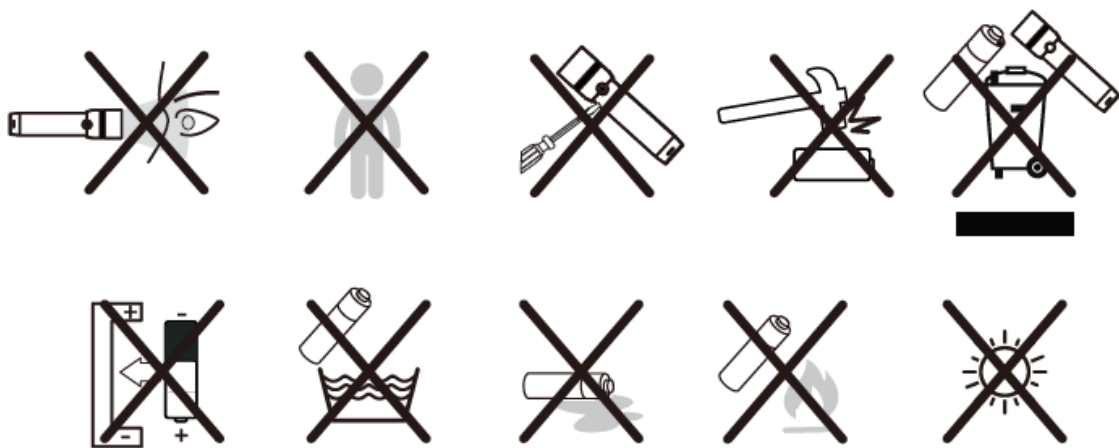
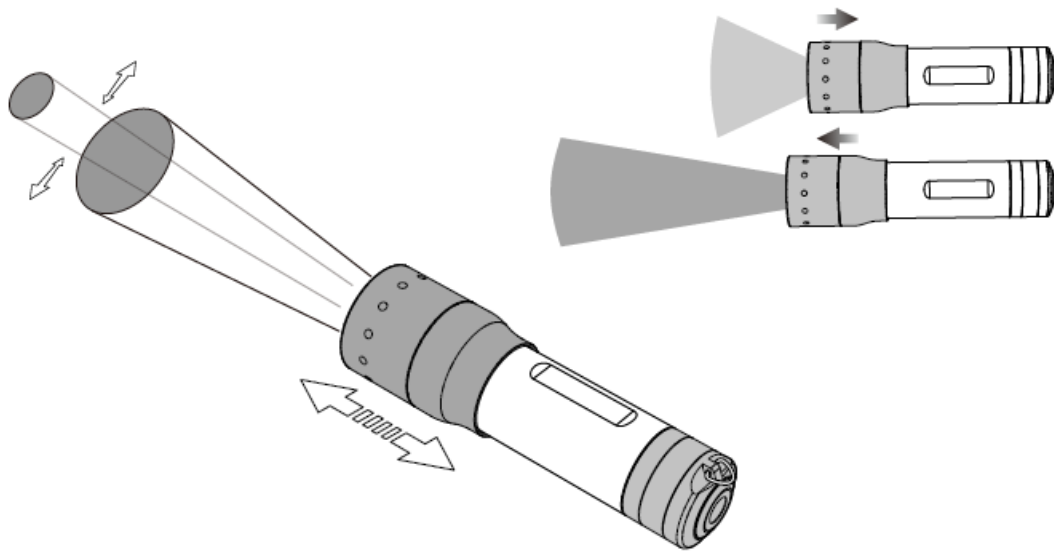
What's in a box?



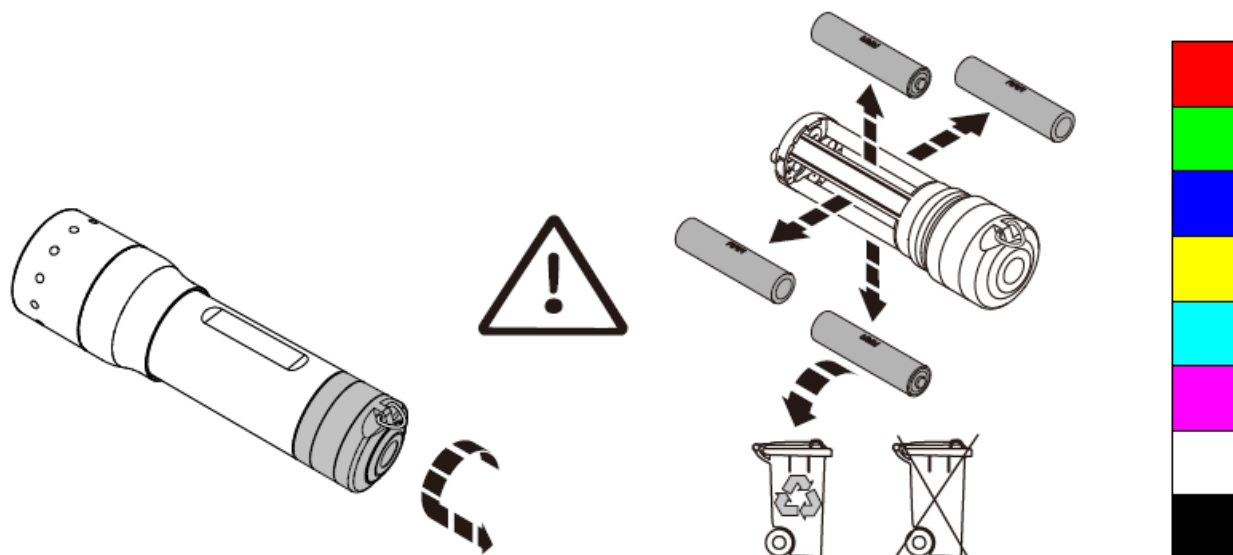
Battery Replacement



Advanced Focus System



Recycling



Lanyard



Ledlenser GmbH & Co. KG

- Kronenstr.5-7 42699 Solingen, Germany
- Phone +49 212/5948
- 0 Fax +49 212/5948-200
- info@ledlenser.com



edlenser.com



FAQs

Q: How do I replace the batteries?

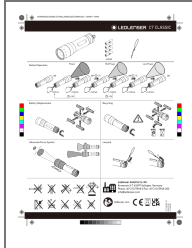
A: To replace the batteries, locate the battery compartment on the C7 CLASSIC and carefully remove the old

batteries. Insert new AAA batteries following the correct polarity.

Q: What should I do if the device is not turning on?

A: Check the battery compartment to ensure the batteries are correctly inserted. If the issue persists, contact customer support for further assistance.

Documents / Resources



[LEDLENSER C7 Classic Torch](#) [pdf] Instruction Manual
1J12A0658, C7 Classic Torch, C7, Classic Torch, Torch

References

- [LEDLENSER](#)
- [User Manual](#)

Manuals+, Privacy Policy

This website is an independent publication and is neither affiliated with nor endorsed by any of the trademark owners. The "Bluetooth®" word mark and logos are registered trademarks owned by Bluetooth SIG, Inc. The "Wi-Fi®" word mark and logos are registered trademarks owned by the Wi-Fi Alliance. Any use of these marks on this website does not imply any affiliation with or endorsement.