



# LEDEPLY A15 Smart Bulb User Manual

[Home](#) » [LEDEPLY](#) » LEDEPLY A15 Smart Bulb User Manual 

## Contents

- [1 LEDEPLY A15 Smart Bulb](#)
- [2 Product Information](#)
- [3 Product Usage Instructions](#)
- [4 GET READY](#)
- [5 Group Control](#)
- [6 Alexa Settings](#)
- [7 Google Assistant Settings](#)
- [8 Documents / Resources](#)
  - [8.1 References](#)
- [9 Related Posts](#)

**LEDEPLY**

**LEDEPLY A15 Smart Bulb**



## Product Information

### Specifications

- Product Name: Smart Bulb
- Compatibility: iOS 10.0 & up, Android 4.4 & up
- Wireless Connection: 2.4Ghz
- Customer Service: Amazon messaging service
- FCC ID: 2AZNW-WSLB

## Product Usage Instructions

### Get Ready

Make sure you meet the following requirements:

- Use the smart bulb in dry locations only
- Do not install the device with wet hands or on wet/damp surfaces
- Avoid using the smart bulb in totally or half enclosed luminaires, especially those with metal shades, as it may distort the signal and affect connectivity and control
- Do not use the smart bulb with dimmers

### Purchase and Setup

1. Search for "LEDEPLY" on Amazon.com
2. Find our store and click on any FECONN product detail page sold by LEDEPLY and Fulfilled by Amazon
3. If you have any questions, tap on "Ask a question" to contact LEDEPLY or send an email to [ledeply@gmail.com](mailto:ledeply@gmail.com)

### Download and Install the App

1. Download the “Smart Life” app from your device’s app store
2. Register or log in to your account if you already have one
3. Add the smart bulb to the app
4. If the light doesn’t blink slowly or quickly, turn it off and on 10 times with intervals of at least 2 seconds to reset it

## **Connect the Smart Bulb**

### **Connect via Bluetooth (Bulb blinks rapidly or slowly)**

1. Enter your Wi-Fi password in the app
2. Select “Lighting” and then “Light source” (BLE+Wi-Fi)
3. Reset the bulb and tap “Next”

### **Connect via Wi-Fi EZ MODE (Recommended)**

1. Make sure the bulb blinks rapidly
2. Select your Wi-Fi network, enter the password, and tap “Blink Quickly”
3. The app will attempt to connect the smart bulb

### **Connect via Wi-Fi AP MODE (ONE at a time)**

1. Make sure the bulb blinks slowly
2. Choose “Blink Slowly” in the app
3. Connect to the “smartLife-xxx” network
4. Go back to the Smart Life app and it will try to connect the bulb

## **Group Control**

1. Select a smart bulb in the device list
2. Tap the edit icon
3. Click “Create Group” to enter its control panel
4. Select devices for unified management
5. Tap “Confirm” to complete the setup

## **Voice Control with Alexa**

To enable voice control with Alexa:

1. Open the Alexa app and enable the “Smart Life” skills
2. Log in to your Smart Life account
3. The smart bulb will be automatically synced with Alexa
4. Once synchronized, use voice commands to control your smart bulbs

## Voice Control with Google Assistant

1. Open the Google Assistant app
2. Tap “Add” – “Set up device”
3. Select “Have something already set up?”
4. Search for “Smart Life” and add it
5. Log in to your Smart Life account
6. The smart bulb will be added to Google Assistant

## FAQ

### Q: Where can I contact customer service?

A: You can contact customer service through the Amazon messaging service or by emailing [ledreply@gmail.com](mailto:ledreply@gmail.com).

### Q: Can I use the smart bulb with dimmers?

A: No, the smart bulb is not compatible with dimmers.

### Q: Can I use the smart bulb in wet or damp locations?

A: No, the smart bulb should only be used in dry locations. Avoid installing it with wet hands or on wet or damp surfaces.

### Q: Can I use the smart bulb in fully enclosed luminaires?

A: No, the smart bulb is not recommended for use in totally or half enclosed luminaires, especially those with metal shades. The metal shade may distort the signal and make it harder to connect or control the lights.

## CAUTION

USE IN DRY LOCATIONS. RISK OF ELECTRIC SHOCK OR BURNS

For indoor use only.

Do not install the device with wet hands or when standing on wet or damp surfaces.

Not for use in totally half or fully enclosed luminaires, especially luminaires with metal shade, which may distort the signal and make it harder to connect or control the lights

Do not use with Dimmers!

## GET READY



iOS 10.0 & up



Android 4.4 & up



2.4Ghz



Smart Life

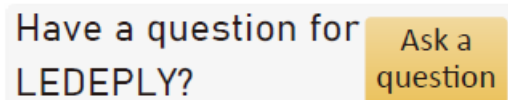
## Customer Service

## Amazon messaging service

1. Search for LEDEPLY



2. Find our store  
( click any of FECONN product detail page)  
Sold by LEDEPLY and Fulfilled by Amazon.
3. Tap Ask a question



Email: [ledeply@gmail.com](mailto:ledeply@gmail.com)

### Download the 'Smart Life' App.

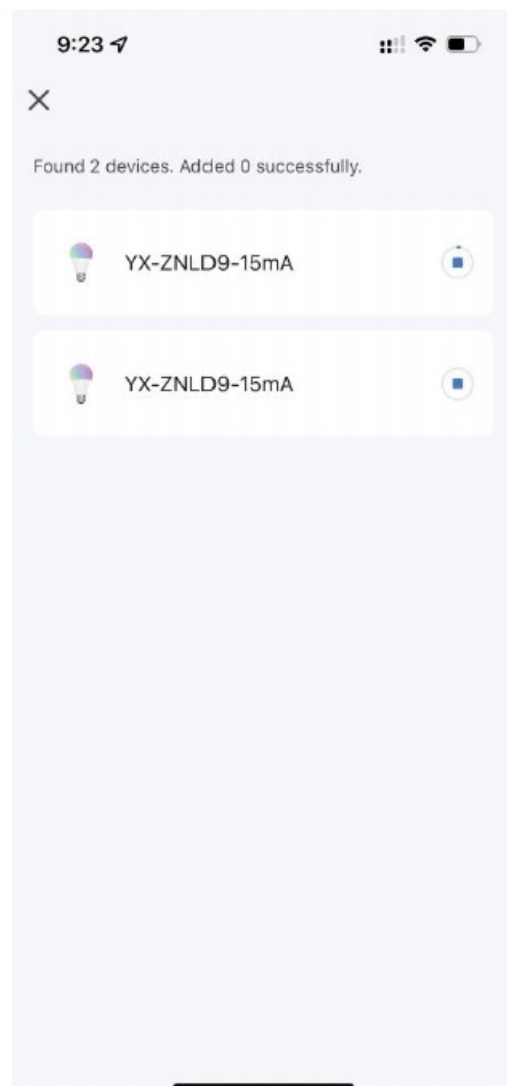
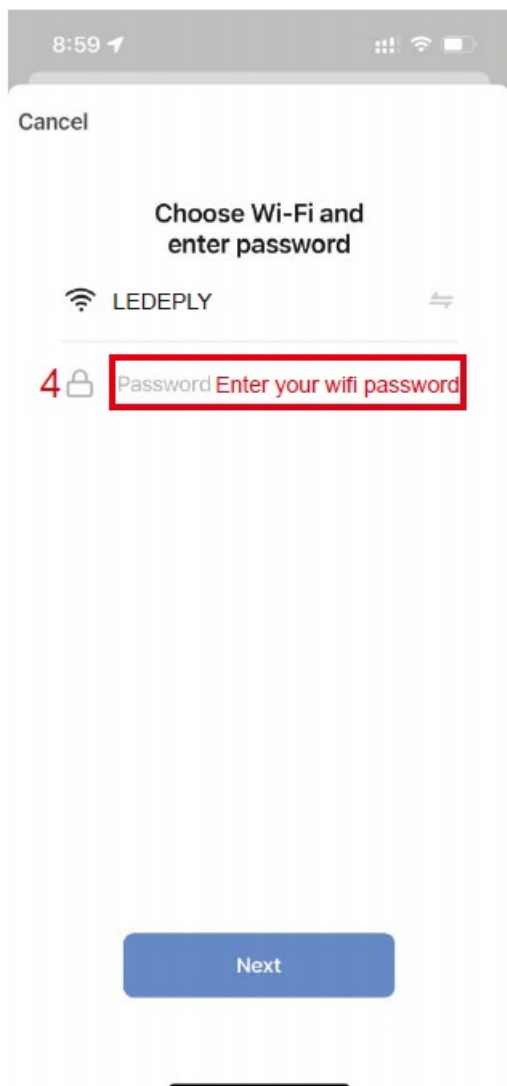
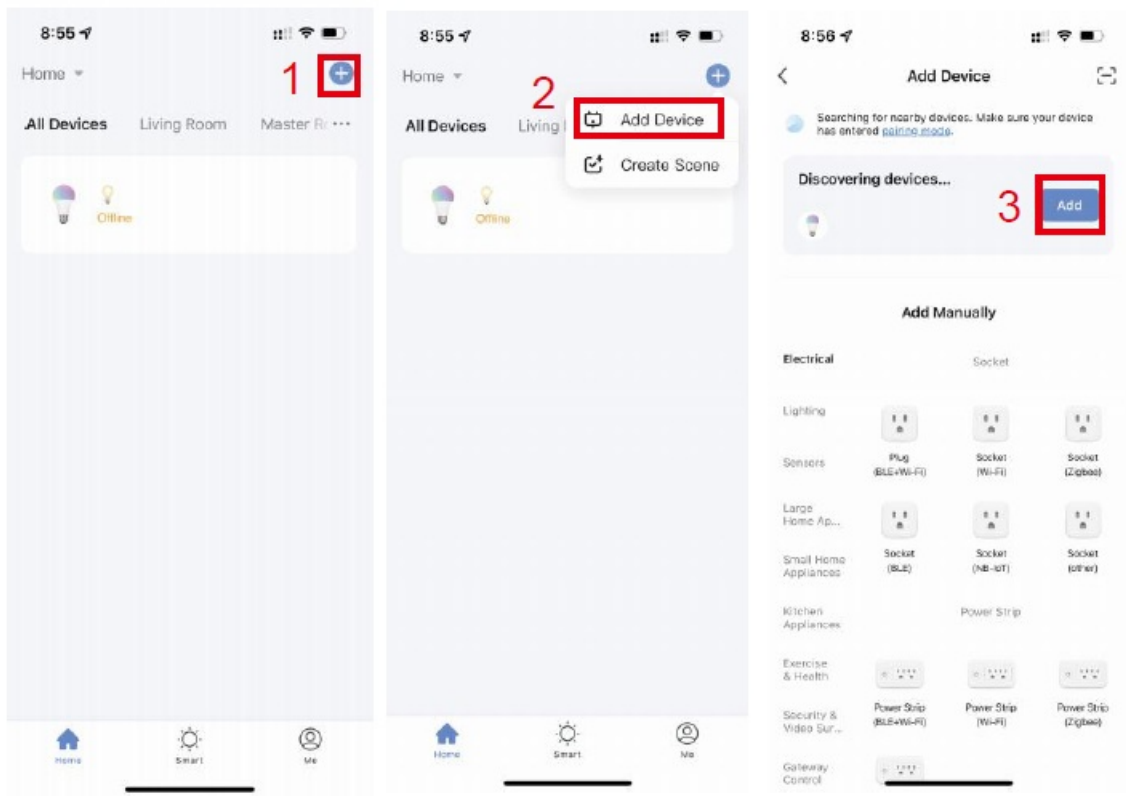
Register or log in if you already have an account



### Add device

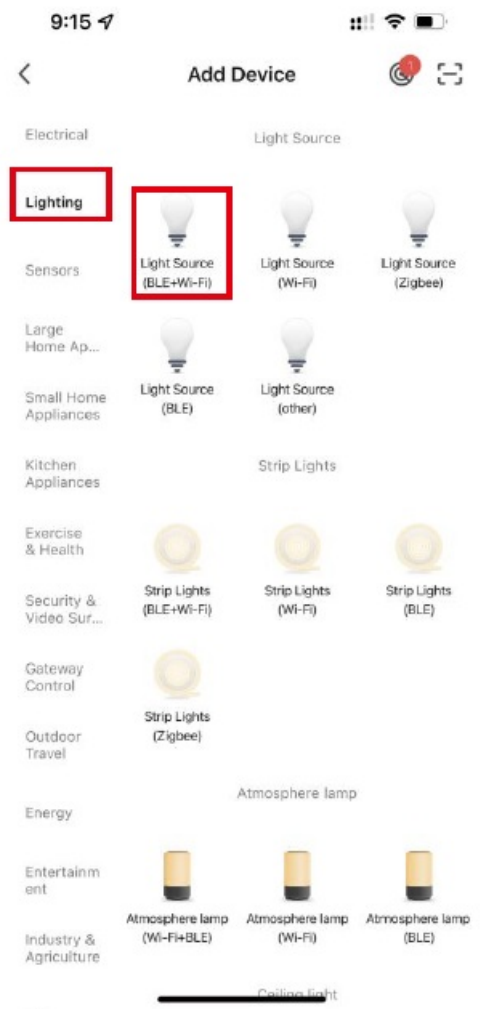
If the light won't blink slowly or quickly, turn it off/on 10 times with intervals of at least 2s to reset it

Connect via Bluetooth  
(Bulb blinks rapidly or slowly)

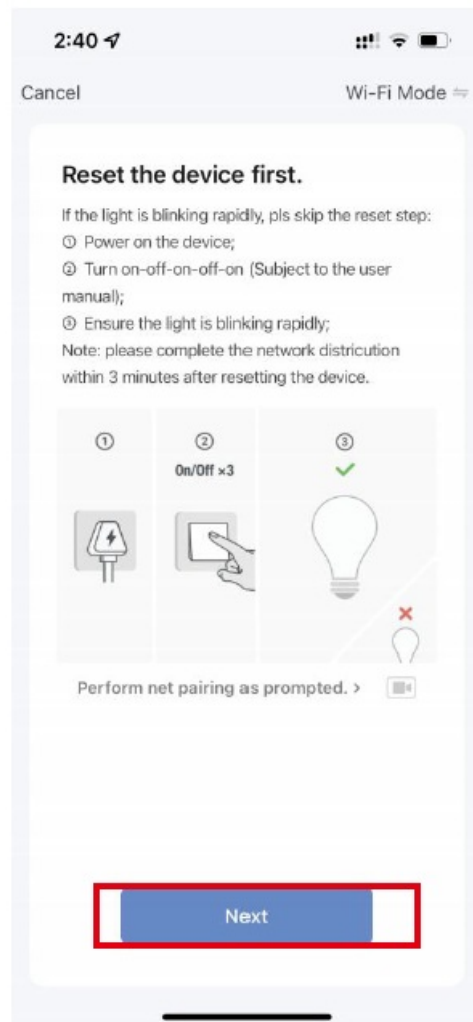


## Connect via WIFI

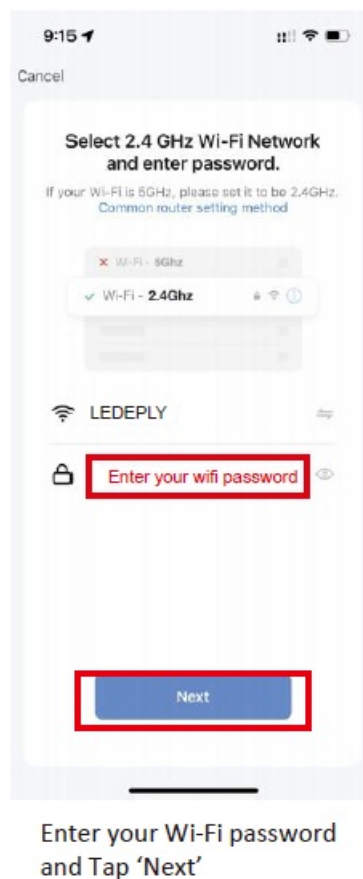
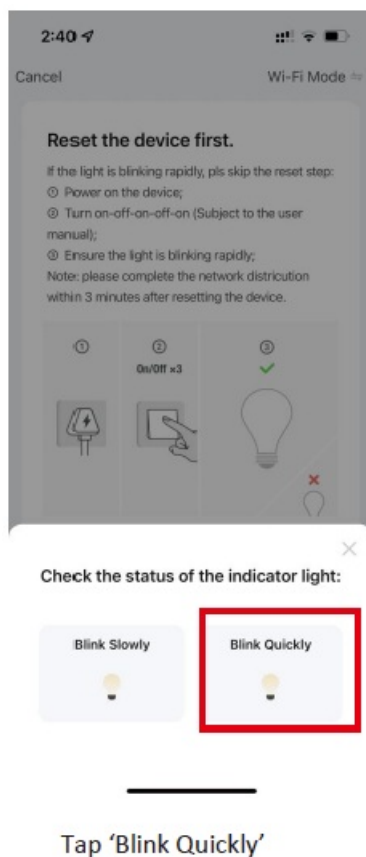
EZ MODE(Recommend) Bulb blinks rapidly



- Select Lighting  
==> Light source (BLE+Wi-Fi)



- Reset the bulb then  
Tap 'Next'

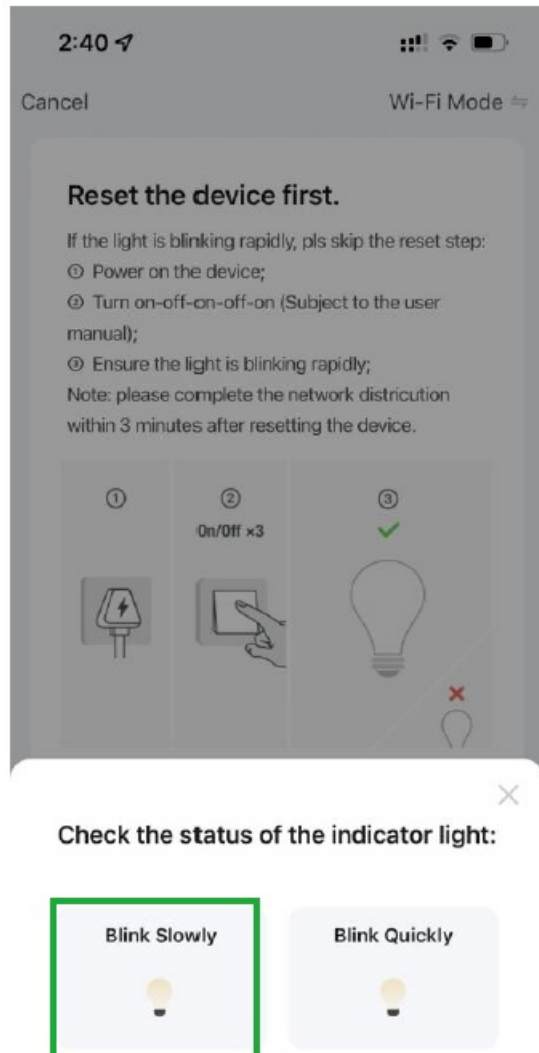




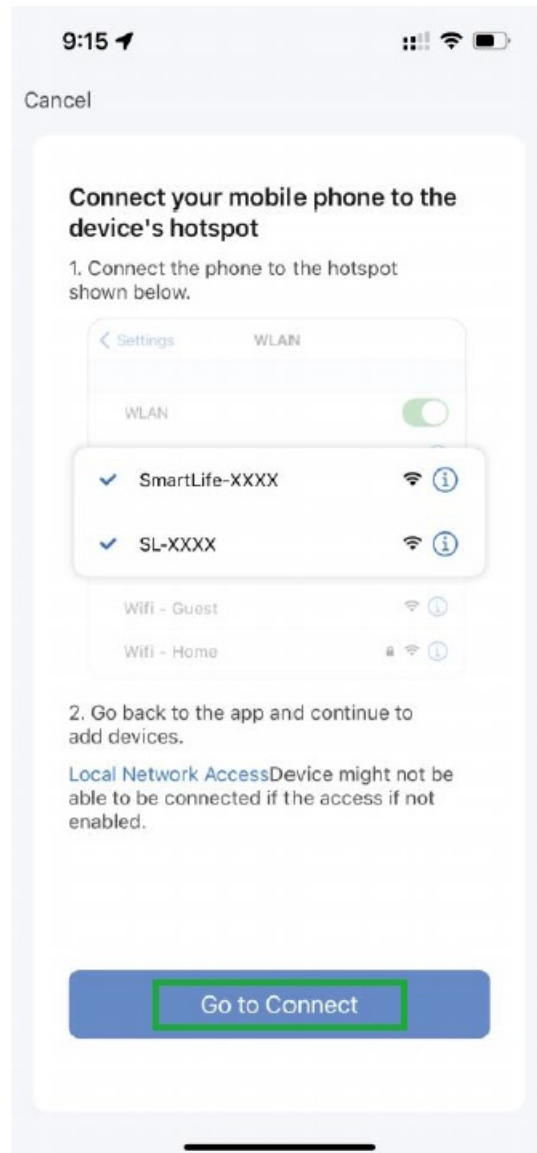
- Tap 'Blink Quickly'
- Enter your Wi-Fi password and Tap 'Next'
- The app will try to connect the smart bulbs

## Connect via WIFI

AP MODE (ONE at a time) Bulb blinks slowly

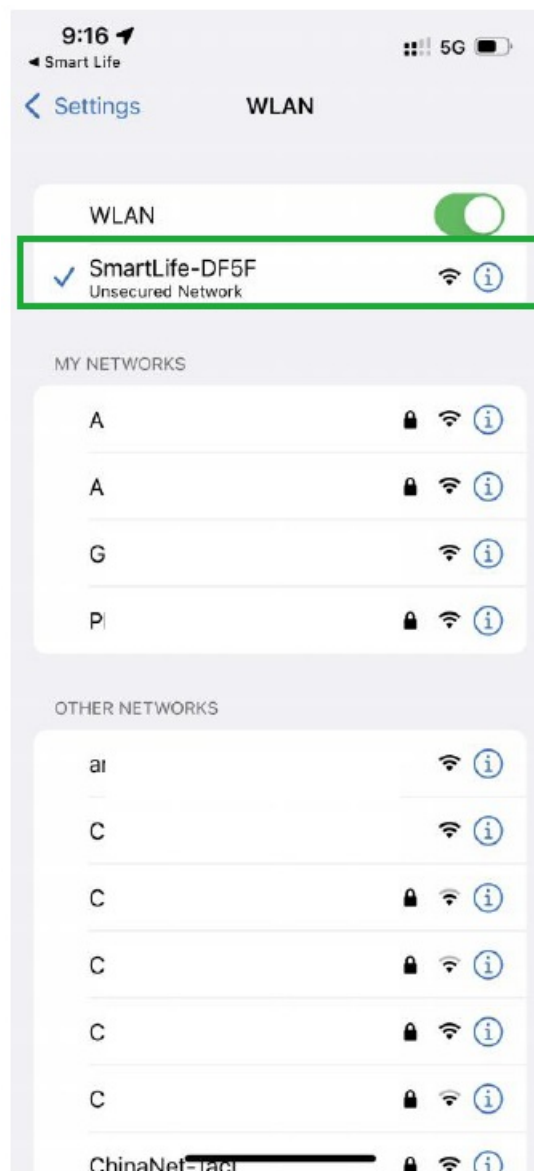


Choose Blink Slowly

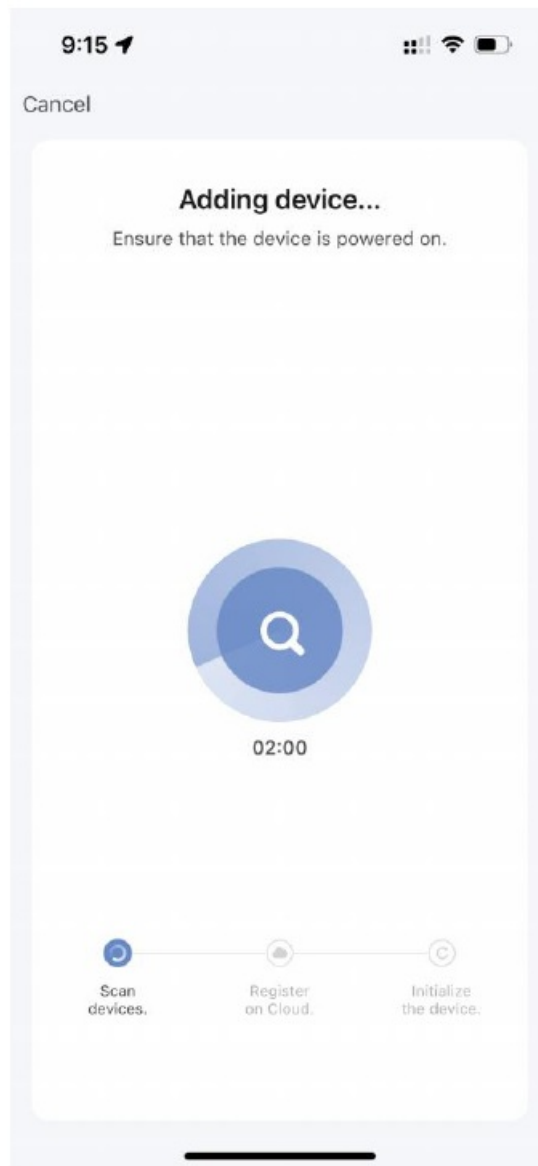


Tap 'go to connect'

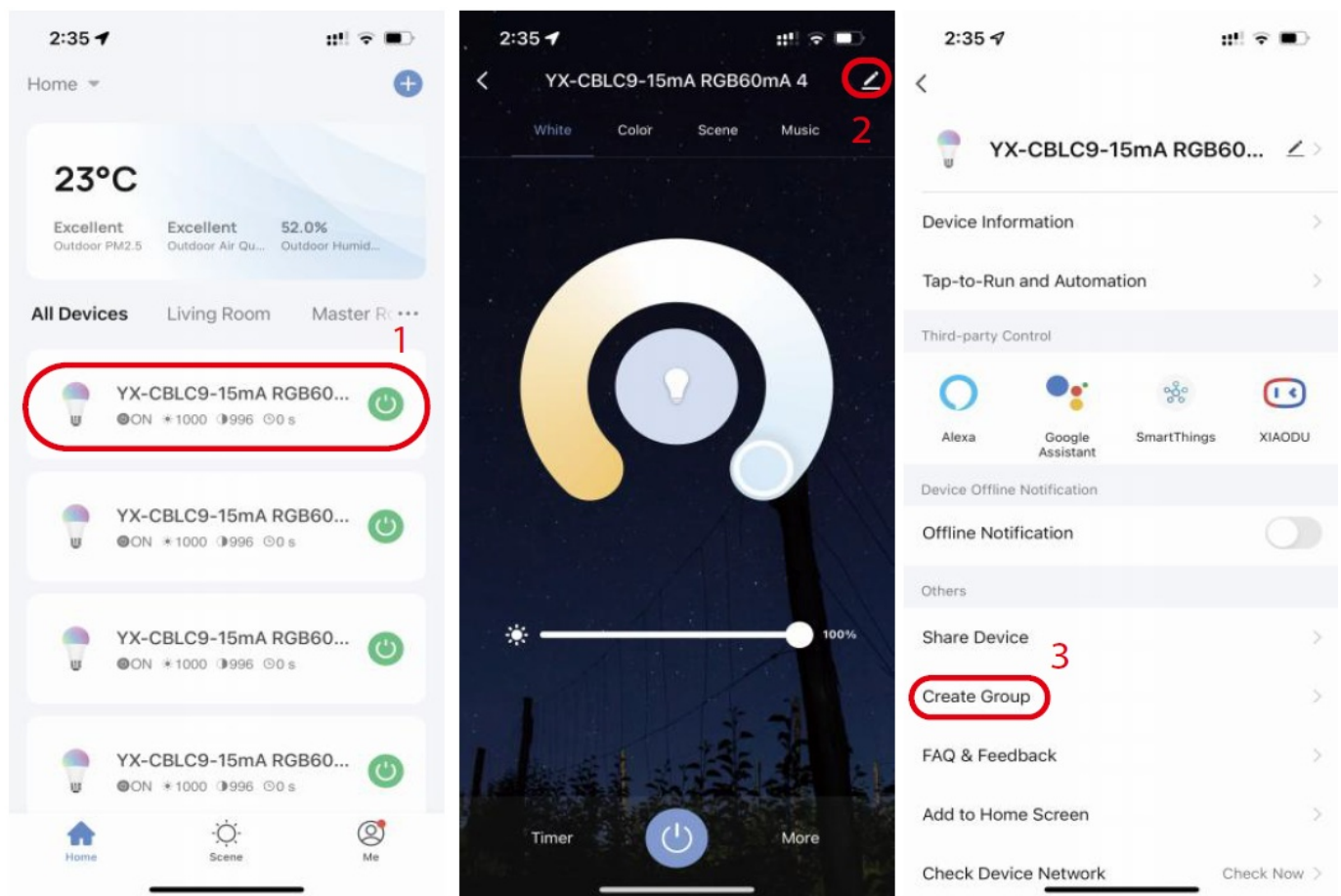
- Choose Blink Slowly
- Tap 'go to connect'



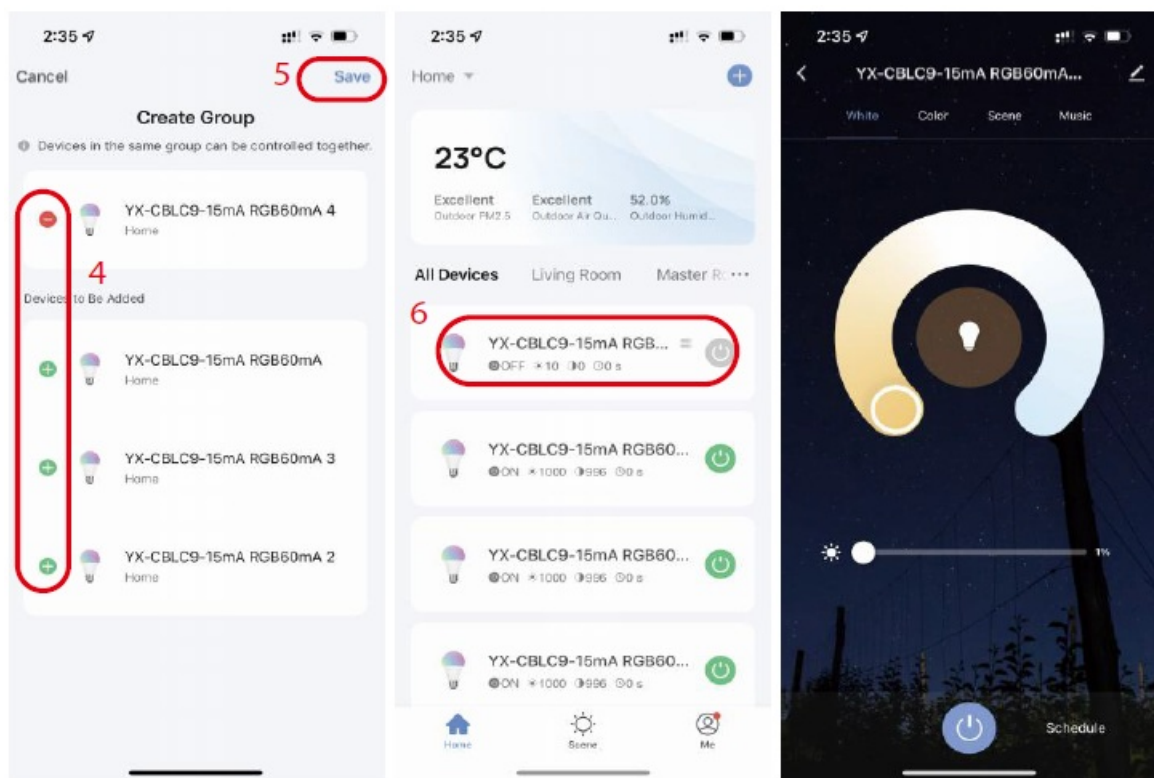
- Connect to the smartLife-xxx network
- Go back to the smart life app, and it will try to connect the bulb



## Group Control



1. Tap a smart bulb in the device list to enter the its control panel.
2. Tap the edit icon
3. Click 'Create Group'



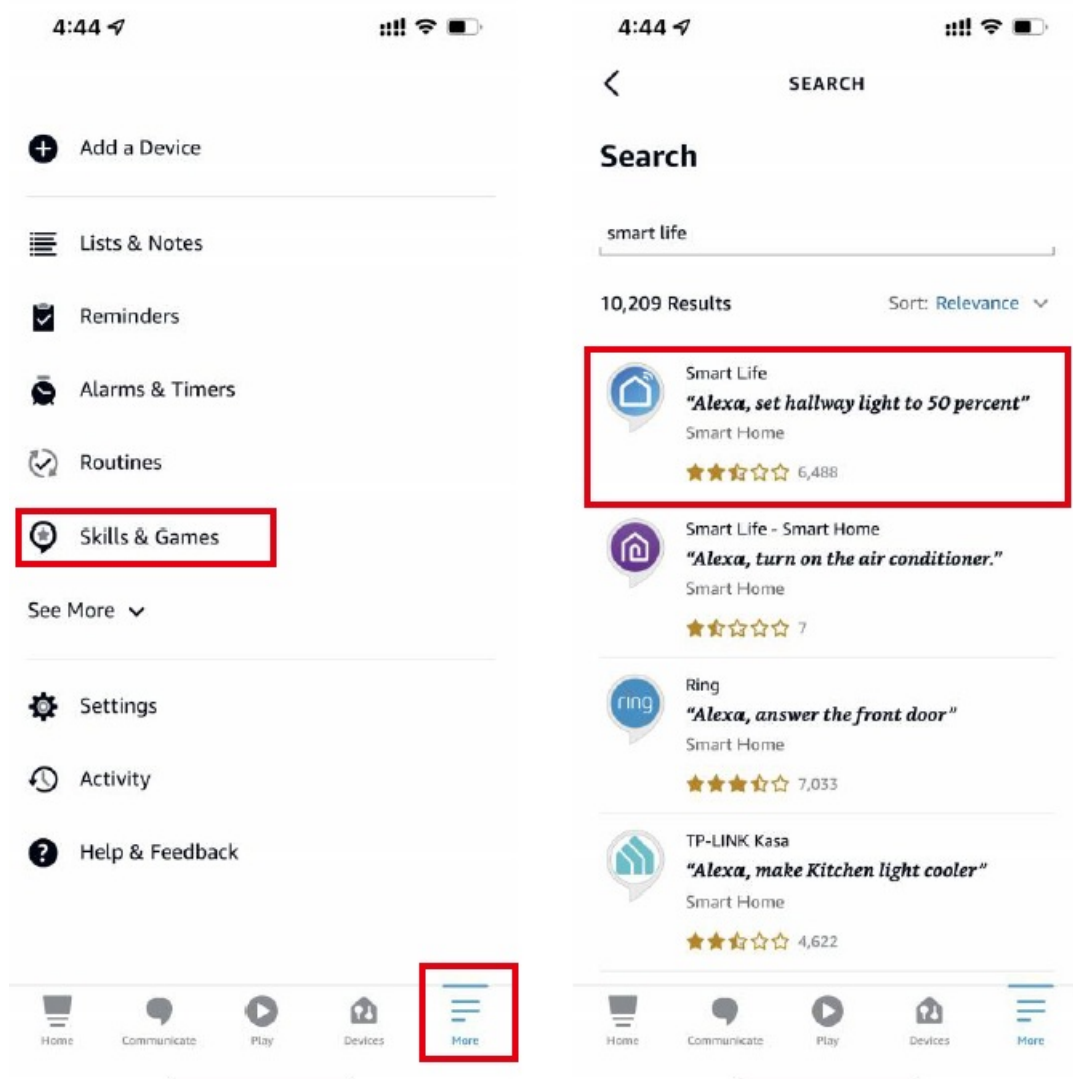
4. Select devices for unified management.
5. Tape 'confirm' to complete the setup.

Now, you can use group control to control mul?ple bulbs

## Alexa Settings

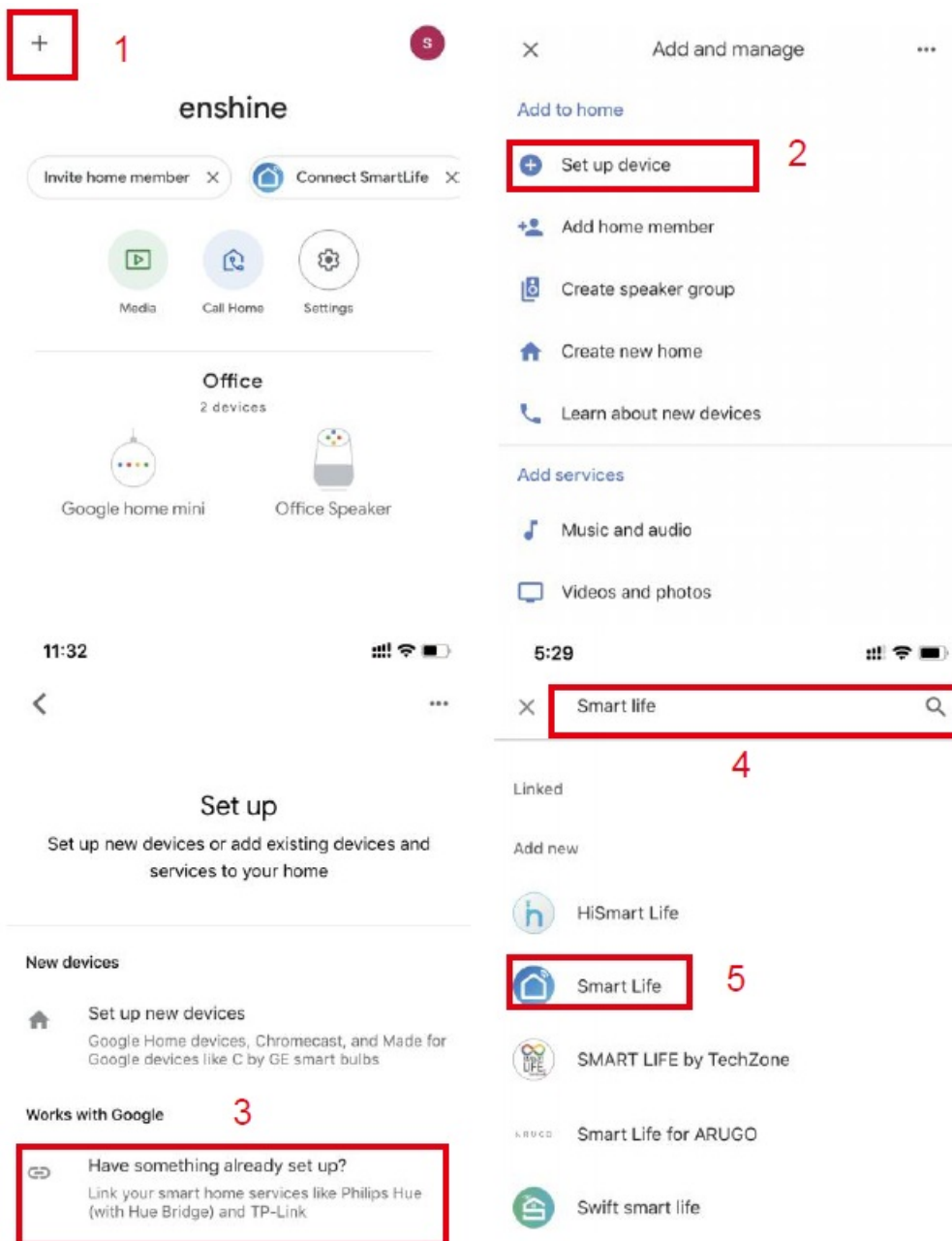
Enable the Smart Life skills in the Alexa APP, then log in your Smart Life account, it will automatically sync your smart bulb to Alexa.

After the synchronization is successful, you can use voice commands to control your smart bulbs.



## Google Assistant Settings

Tap 'Add' – 'Set up device' – 'Have something already set up?' – search for 'Smart Life' to add it and log in your Smart Life account.



### Smart bulb

FCC ID: 2AZNW-WSLB

Caution: This device complies with part 15 of the FCC Rules. Operation is subject to the following two conditions:

1. This device may not cause harmful interference, and
2. this device must accept any interference received, including interference that may cause undesired operation.

### Documents / Resources

<div>LEDEPLY</div> <div>Smart Bulb User Manual</div>	<div><a href="#">LEDEPLY A15 Smart Bulb</a> [pdf] User Manual</div> <div>A15 Smart Bulb, A15, Smart Bulb, Bulb</div>
--	--

References

- [a. Spend less. Smile more.](#)
- [User Manual](#)