



## Led2 LIGHTING TINY Ceiling Lamp Instruction Manual

[Home](#) » [Led2 LIGHTING](#) » Led2 LIGHTING TINY Ceiling Lamp Instruction Manual 

### Led2 LIGHTING TINY Ceiling Lamp Instruction Manual



#### Contents

- [1 Product Using Instruction](#)
- [2 Documents / Resources](#)
  - [2.1 References](#)
- [3 Related Posts](#)

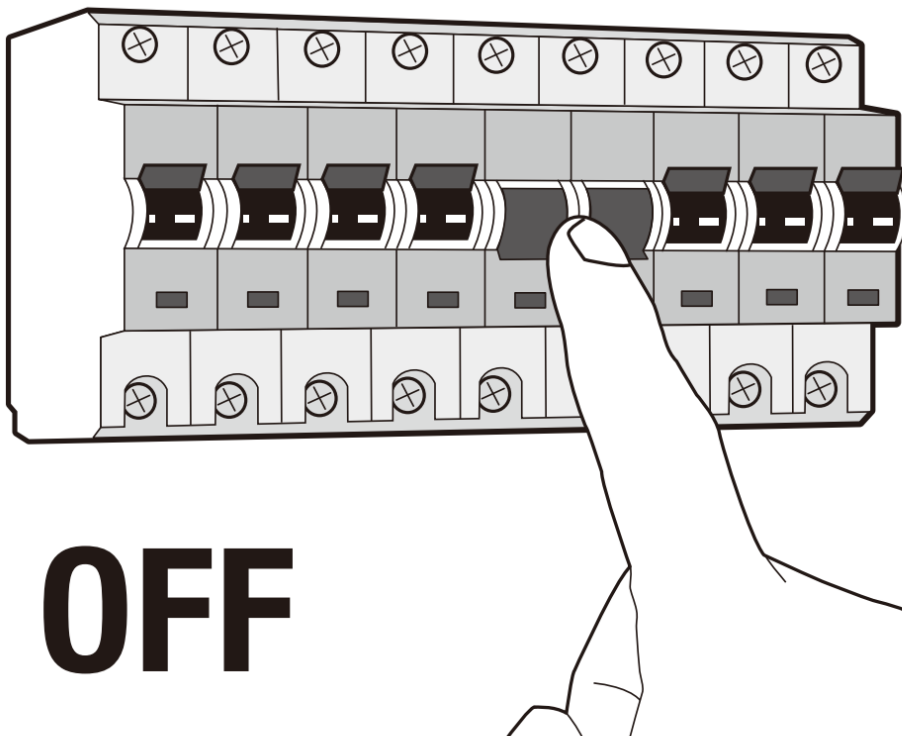
#### Product Using Instruction



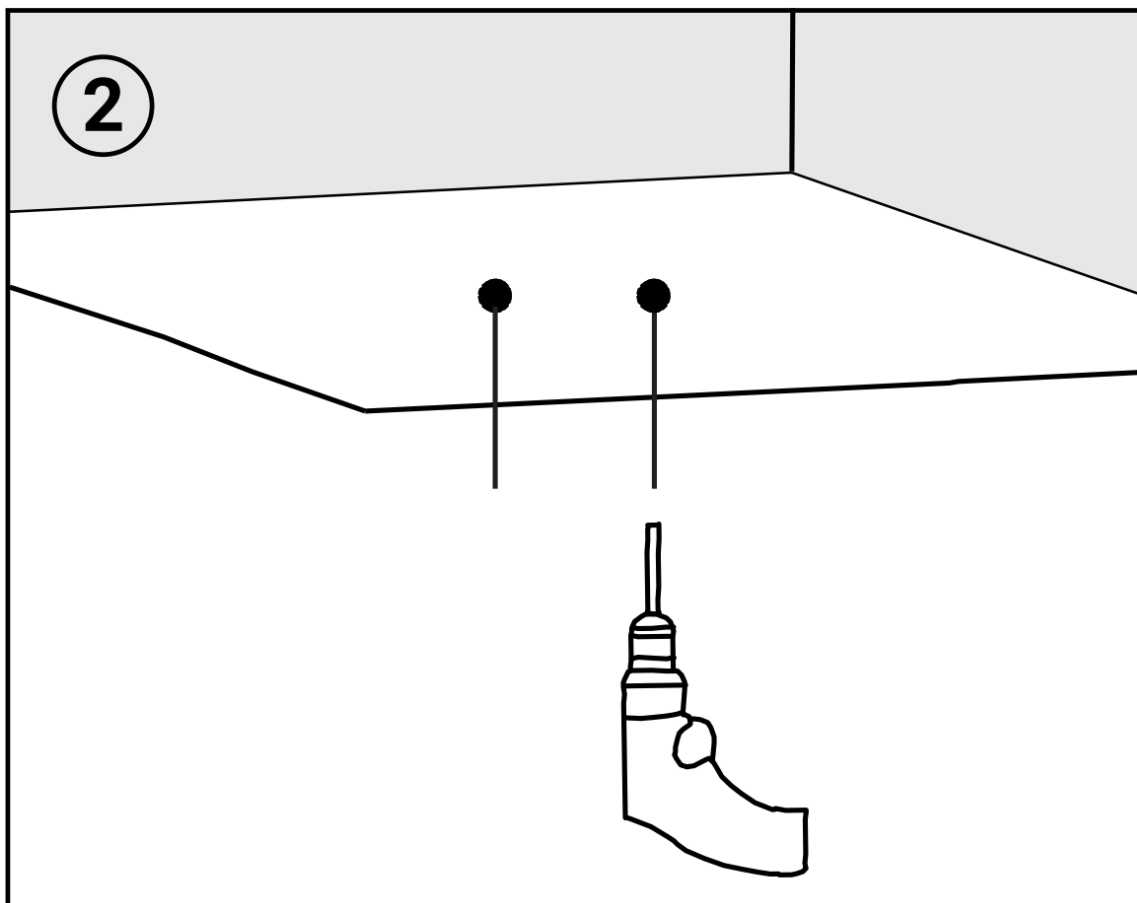
The installation may only be carried out by a technician

This product contains a light source of energy efficiency class G

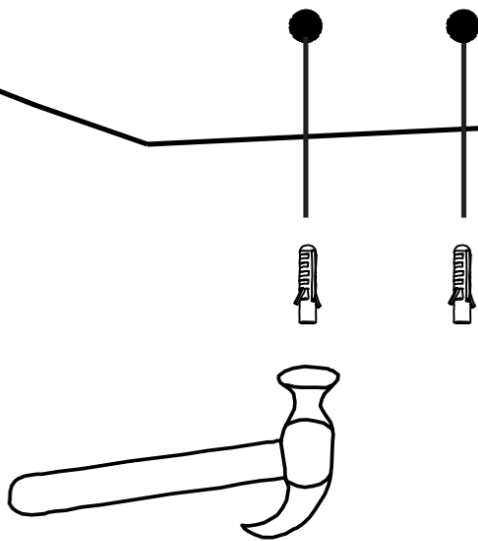
1



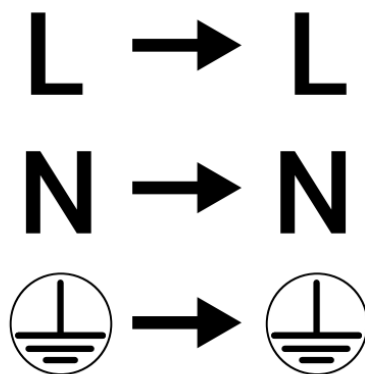
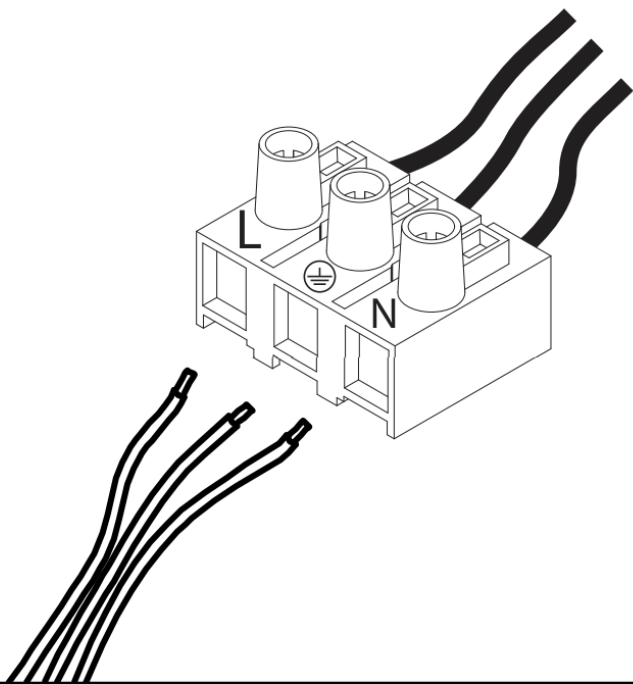
2



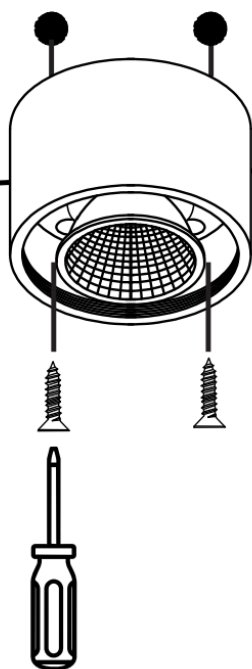
3



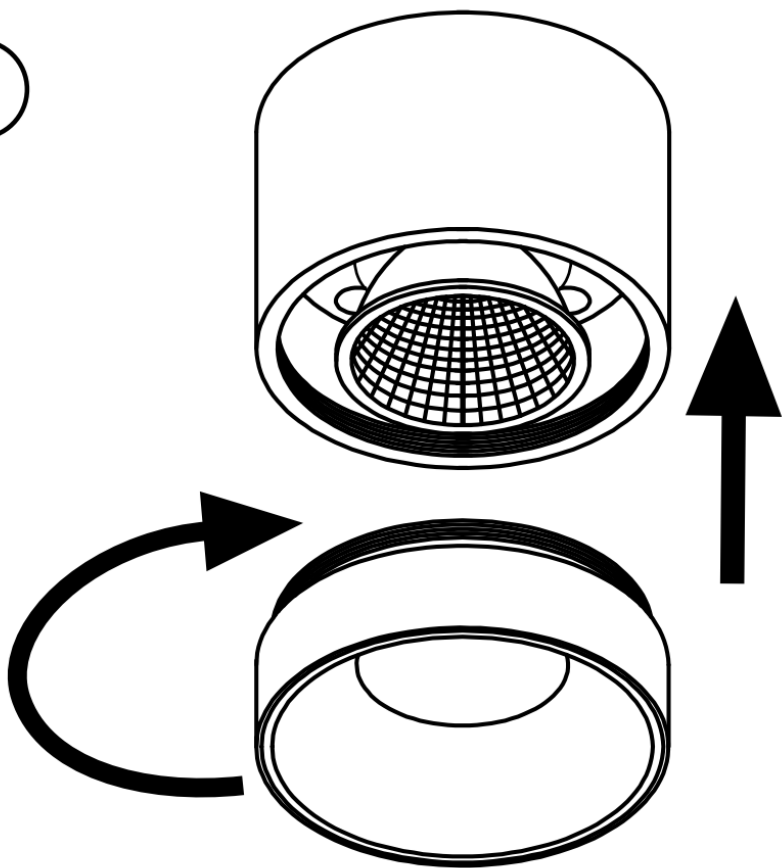
4



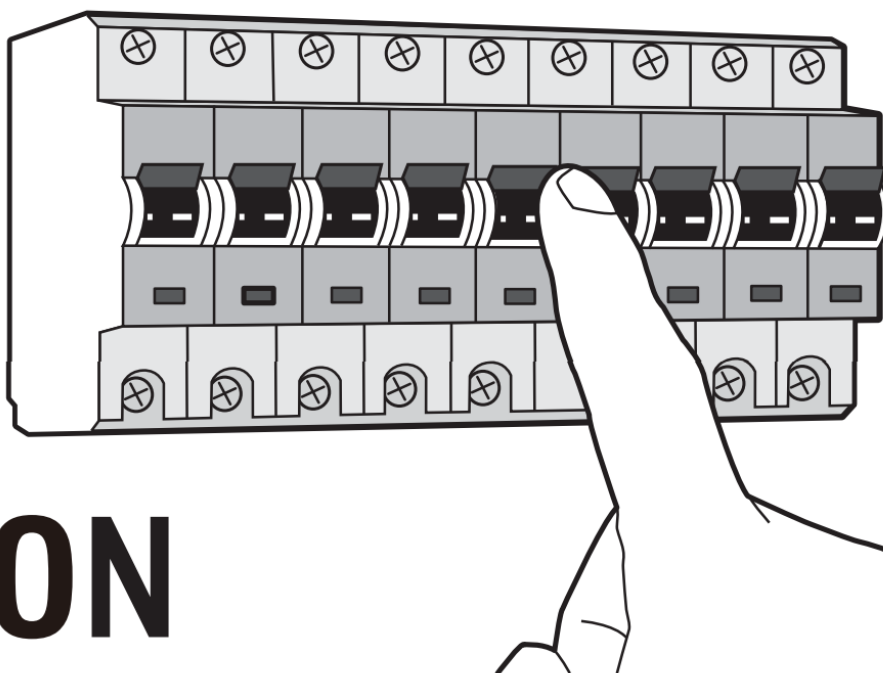
5



6



7



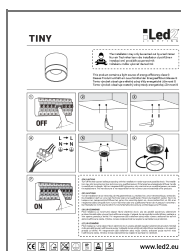
Turn off the main power before proceeding with the installation in order to prevent possible shock. The installation may only be carried out by a technician or a qualified person. If the lamp has a lampshade/diffuser, handle it carefully as it is fragile. With an integrated LED light source, only a technician or a qualified person can make the replacement. The manufacturer is not responsible for the incorrect use and assembly of its products.



[www.led2.eu](http://www.led2.eu)

# TINY

## Documents / Resources



[Led2 LIGHTING TINY Ceiling Lamp](#) [pdf] Instruction Manual  
TINY, TINY Ceiling Lamp, Ceiling Lamp, Lamp

## References

-  [uvod - architectural lighting](#)

Manuals+.