



LED SOLUTION 061215 PIR Sensor Switch For Profiles Instruction Manual

[Home](#) » [LED Solution](#) » LED SOLUTION 061215 PIR Sensor Switch For Profiles Instruction Manual 



Manual
PIR sensor switch for profiles 061215

Contents

- [1 Description](#)
- [2 Specification](#)
- [3 Dimensions and connections](#)
- [4 Control function](#)
- [5 Documents / Resources](#)
 - [5.1 References](#)

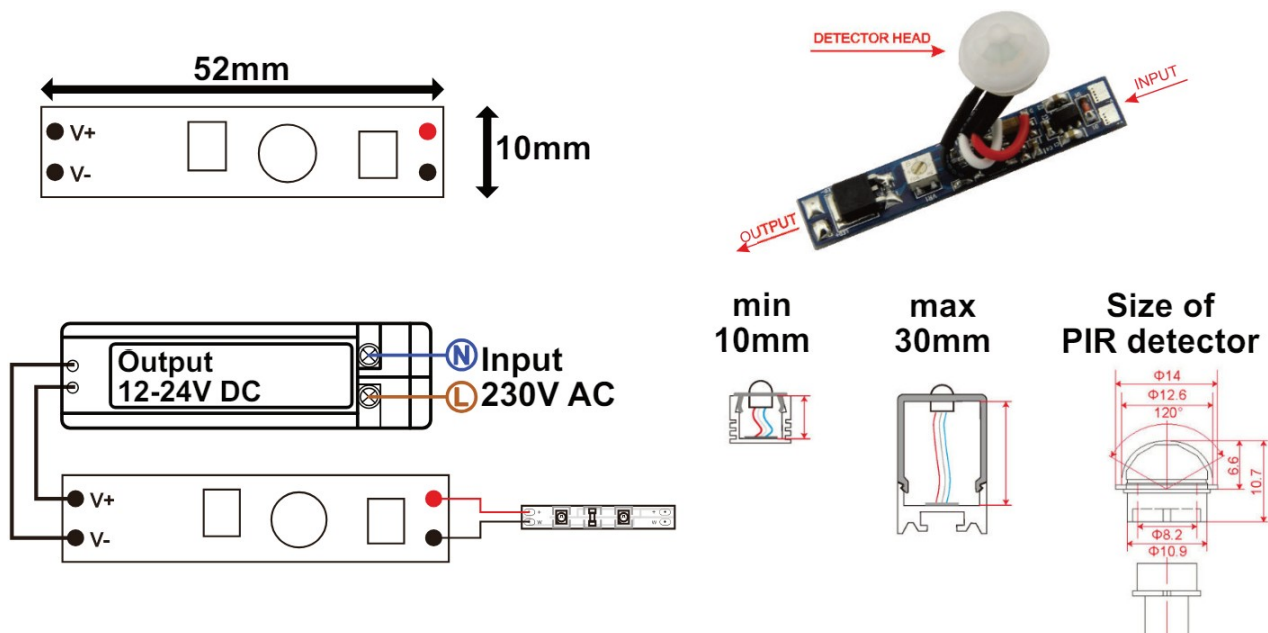
Description

Profile motion switch with PIR sensor intended for aluminum profiles for switching single-color LED strips.

Specification

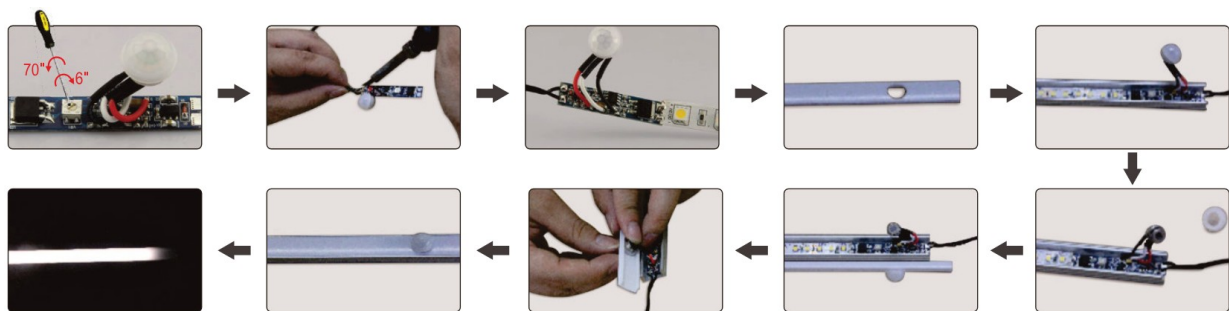
Input/output: 12-24VDC, max. 8A, 12V = 96W, 24V = 196W, sensor detection up to 2m with a viewing angle of 120°. Lighting time setting approx. 8-80s.

Dimensions and connections



Control function

The possibility of setting a time interval of approx. 8-80s. Changing the time is done with a flat screwdriver and turning the trimmer clockwise or counterclockwise. To place the PIR sensor in the diffuser, it is necessary to drill a 10.5 mm mounting hole.



Notice

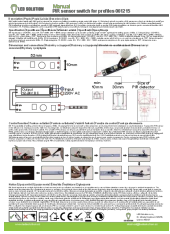
Avoid exposure to sunlight, light bulbs or heat sources (such as radiators and heaters) or air conditioners in case of false detection caused by a change in ambient temperature. The switch must be determined by a professional person or company. Do not touch the surface of the PIR sensor. Regularly clean the white cover of the PIR sensor with a wet cloth in case the sensor does not work properly.



LED SOLUTION

LED Solution s.r.o.,
Dr. Milady Horákové 185/66,
Liberec 460 07
www.ledsolution.cz
obchod@ledsolution.cz

Documents / Resources



[LED SOLUTION 061215 PIR Sensor Switch For Profiles](#) [pdf] Instruction Manual
061215 PIR Sensor Switch For Profiles, 061215, PIR Sensor Switch For Profiles, Sensor Switch For Profiles, Switch For Profiles, Profiles

References

- [LED Český výrobce kvalitního LED osvětlení | LED Solution](#)
- [User Manual](#)

[Manuals+](#), [Privacy Policy](#)

This website is an independent publication and is neither affiliated with nor endorsed by any of the trademark owners. The "Bluetooth®" word mark and logos are registered trademarks owned by Bluetooth SIG, Inc. The "Wi-Fi®" word mark and logos are registered trademarks owned by the Wi-Fi Alliance. Any use of these marks on this website does not imply any affiliation with or endorsement.