



Contents [[hide](#)]

- [1 LED LAMP HF3005-1 LED Bluetooth Symphony Controller](#)
- [2 Product Information](#)
- [3 Technical Parameters](#)
- [4 Setting Up the Christmas Decorations](#)
- [5 Operating the Christmas decorations](#)
- [6 Product Description](#)
- [7 Download App Software](#)
- [8 Instructions](#)
- [9 FCC Warning Statement](#)
- [10 Frequently Asked Questions](#)
- [11 Documents / Resources](#)
 - [11.1 References](#)

LED LAMP

LED LAMP HF3005-1 LED Bluetooth Symphony Controller



Product Information

The Christmas Decoration is a festive item designed to enhance your holiday decor. It features a unique design that adds charm and warmth to any space.

Technical Parameters

- Product name: Christmas Decoration
- Support system: Android 4.4 and above / iOS 11.0 and above
- Connection mode: Bluetooth 4.0
- Remote control: 40-key Product Usage Instructions

Setting Up the Christmas Decorations

1. Unbox the Christmas Decoration carefully.
2. Identify a suitable location to place the decoration.
3. Ensure the area is clean and free from any obstructions.
4. Place the Christmas Decoration in the desired spot.

Operating the Christmas decorations

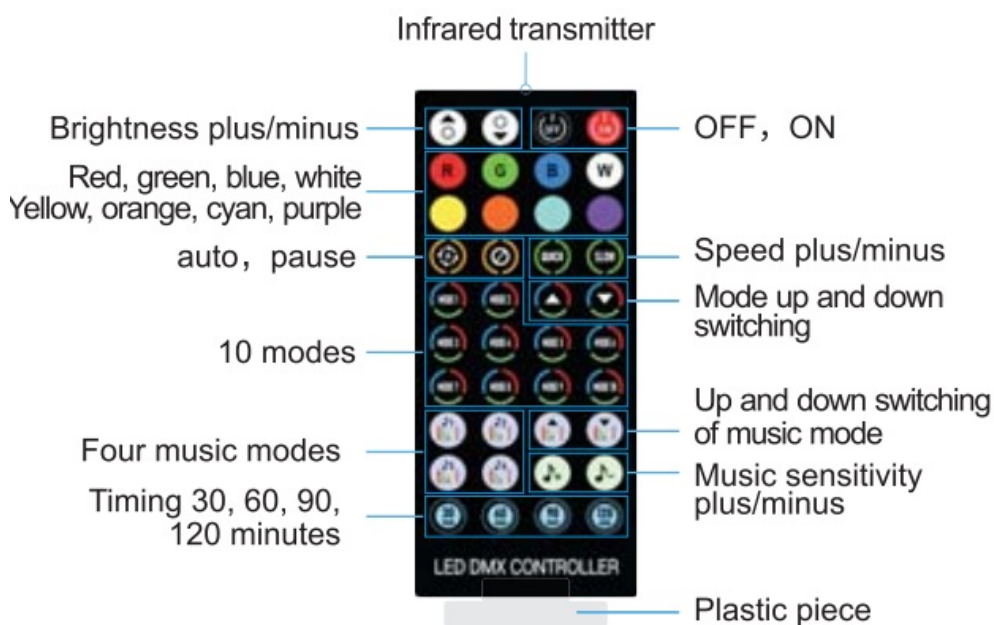
1. Plug in the decoration to a power source, if applicable.
2. Switch on the decoration using the provided switch or remote control.
3. Adjust any settings or features according to your preferences.
4. Enjoy the festive ambiance created by the Christmas decorations.

Product Description

Controller



Remote control



Download App Software

Please search LED LAMP in major Appcenters, or scan below QR code.



1. Download the “LED LAMP” APP with your mobile phones by scanning the QR code on user manual or search the “LED LAMP” APP in iPhone APP store or Google play store.
2. After the APP are downloaded successfully, you need to turn on Bluetooth function on

your phone firstly, then plug in the strip light, then open the APP, your APP will pair with the strip light automatically and you can control it. # Android phones need to open the location function and allow permission

Unable to Connect Troubleshooting

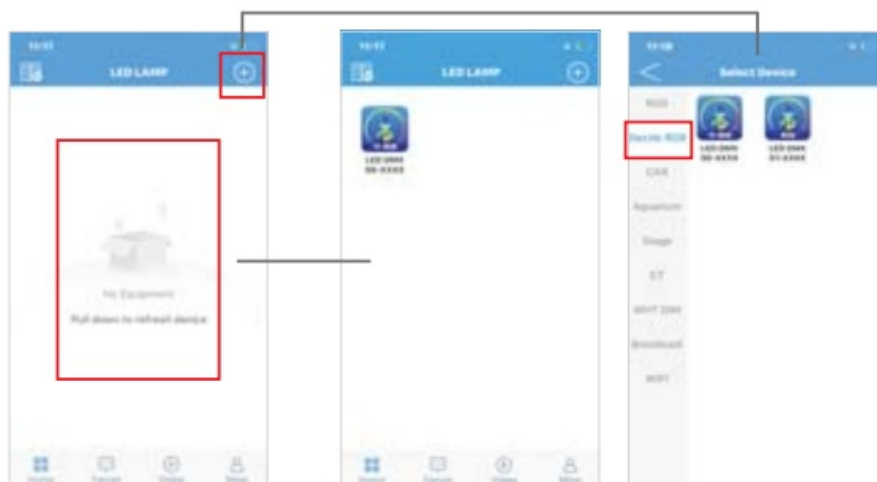
Check if the power supply of the light strip is normal.


1. Check if the Bluetooth is turn on.
2. Check if there are other mobile phone are connected, Bluetooth 4.0 only support connections one to many, dose not support many to many.
3. Check APP Bluetooth setting if the phone is connected to the device, if connect, exit the APP and reopen, the APP will go to connect automatically.
4. Normal operations and can not connect, please exit the APP and reopen.
5. Exit APP, restart mobile phone, power on the strip light, reopen the APP, then them will connect automatically.

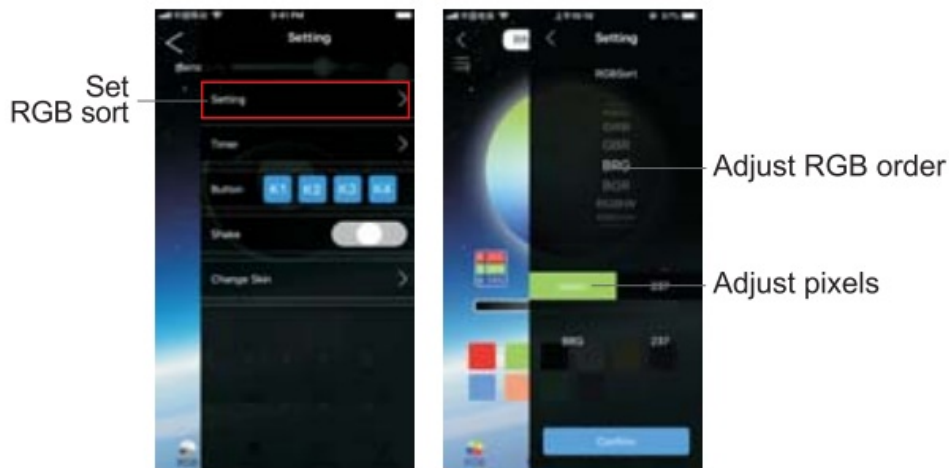
Instructions


- LED DMX 00-XXXX (With voice control)
- LED DMX 01-XXXX (No voice control)

On the homepage interface, pull down to refresh, the APP will automatically search for nearby devices. After finding the device, Click the device icon to enter the light control interface. You can also click the “⊕” button in the upper right corner, select the device and enter the light control interface. (Select LED DMX 00-XXXX device)





1.  Setting: You can set RGB sorting, timing, shake, and change skin.




2.  Color interface: The color interface has three parts: color ring, aisle, and monochrome.



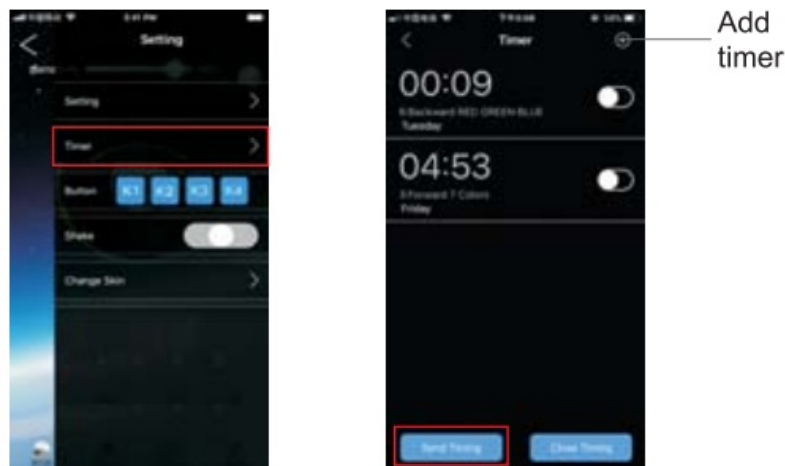
3.  Mode interface: you can choose the mode, adjust the speed, adjust the brightness as you want;
4.  In custom interface, you can add color, choose mode, and adjust speed.



5.  Music interface: It is composed of two parts: voice control and music. The voice control interface has hundreds of voice control modes to choose from. The music interface requires a mobile phone to play sonas.



6. Timer: can set the desired time period to open the desired mode, turn off the desired Mode.



FCC Warning Statement

Changes or modifications not expressly approved by the party responsible for compliance could void the user's authority to operate the equipment. This equipment has been tested and found to comply with the limits for a Class B digital device, pursuant to Part 15 of the FCC Rules. These limits are designed to provide reasonable protection against harmful interference in a residential installation. This equipment generates uses and can radiate radio frequency energy and, if not installed and used in accordance with the instructions, may cause harmful interference to radio communications. However, there is no guarantee that interference will not occur in a particular installation. If this equipment does cause harmful interference to radio or television reception, which can be determined by turning the equipment off and on, the user is encouraged to try to correct the interference by one or more of the following measures:

- Reorient or relocate the receiving antenna.
- Increase the separation between the equipment and receiver.
- Connect the equipment into an outlet on a circuit different from that to which the receiver is connected.
- Consult the dealer or an experienced radio/TV technician for help.

This device complies with part 15 of the FCC Rules. Operation is subject to the following two conditions: (1) This device may not cause harmful interference, and (2) this device must accept any interference received, including interference that may cause undesired operation.

RF Exposure Statement

To maintain compliance with FCC's RF Exposure guidelines, this equipment should be installed and operated with a minimum distance of 20cm the radiator your body. This device and its antenna(s) must not be co-located or operation in conjunction with any other antenna or transmitter.

Frequently Asked Questions


- **Q: What type of power source does the Christmas Decoration require?**

A: The Christmas Decoration may require a power outlet for operation. Please refer to the product specifications or manual for specific details.

- **Q: Can the Christmas Decoration be used outdoors?**

A: It is recommended to use the Christmas Decoration indoors unless specified otherwise by the manufacturer. Outdoor usage may affect its durability and performance.

Documents / Resources

	<p>LED LAMP HF3005-1 LED Bluetooth Symphony Controller [pdf] User Guide</p> <p>HF3005-1, HF3005-1 LED Bluetooth Symphony Controller, LED Bluetooth Symphony Controller, Bluetooth Symphony Controller, Symphony Controller</p>
---	--

References

- [User Manual](#)

LED

LAMP

Bluetooth Symphony Controller, HF3005-1, HF3005-1 LED Bluetooth Symphony Controller, LED Bluetooth Symphony Controller, LED Lamp, Symphony Controller

—Previous Post

LED LAMP Bluetooth String Lights App User Guide

Leave a comment

Your email address will not be published. Required fields are marked *

Comment *

Name

Email

Website

☐ Save my name, email, and website in this browser for the next time I comment.

Post Comment

Search:

e.g. whirlpool wrf535swhz

Search

[Manuals+](#) | [Upload](#) | [Deep Search](#) | [Privacy Policy](#) | [@manuals.plus](#) | [YouTube](#)

This website is an independent publication and is neither affiliated with nor endorsed by any of the trademark owners. The "Bluetooth®" word mark and logos are registered trademarks owned by Bluetooth SIG, Inc. The "Wi-Fi®" word mark and logos are registered trademarks owned by the Wi-Fi Alliance. Any use of these marks on this website does not imply any affiliation with or endorsement.