



# LED LAMP 3FT-2PC Bluetooth Symphony Controller User Manual

[Home](#) » [LED LAMP](#) » LED LAMP 3FT-2PC Bluetooth Symphony Controller User Manual 

## LED LAMP 3FT-2PC Bluetooth Symphony Controller User Manual



### Contents

- [1 Technical Parameters](#)
- [2 Product Description](#)
- [3 Download App Software](#)
- [4 Instructions](#)
- [5 Documents / Resources](#)
  - [5.1 References](#)
- [6 Related Posts](#)

Technical Parameters

Product name	Bluetooth Symphony Controller
Support system	Android 4.4 and above / iOS 11.0 and above
Connection mode	Bluetooth 4.0
Remote control	17key

Product Description

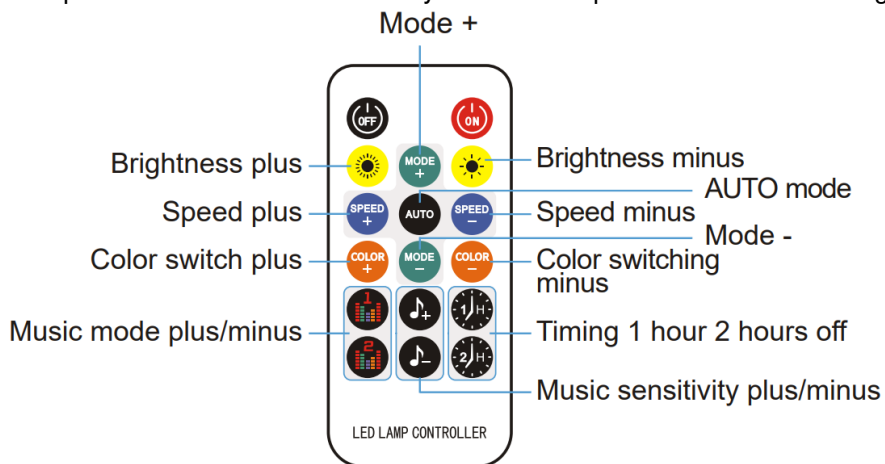
Bluetooth Symphony Controller



## Infrared transmitt



The plastic sheet isolate the battery. remove the plastic sheet when using the remote control.



## Download App Software

Please search LED LAMP in major Appcenters, or scan below QR code.



1. Download the “LED LAMP” APP with your mobile phones by scanning the QR code on user manual or search the “LED LAMP” APP in iPhone APP store or Google play store.
2. After the APP are downloaded successfully, you need to turn on Bluetooth function on your phone firstly, then plug in the strip light, then open the APP, your APP will pair with the strip light automatically and you can control it.

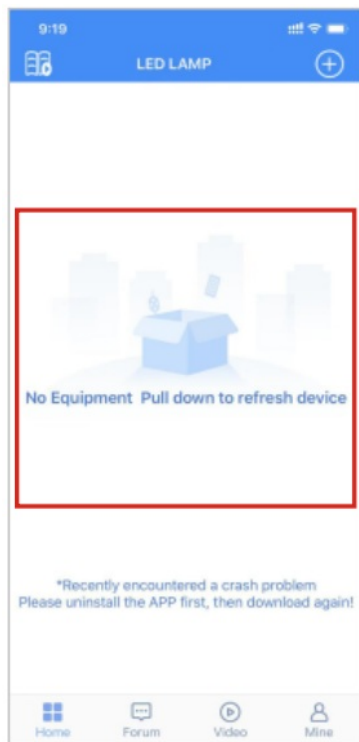
### Unable to Connect Troubleshooting

1. Check if the power supply of the light strip is normal.
2. Check if the Bluetooth is turn on.
3. Check if there are other mobile phone are connected, Bluetooth 4.0 only support connections one to many, dose not support many to many.
4. Check APP Bluetooth setting if the phone is connected to the device, if connect, exit the APP and reopen, the APP will go to connect automatically.
5. Normal operations and can not connect, please exit the APP and reopen.
6. Exit APP, restart mobile phone, power on the strip light, reopen the APP, then them will connect automatically.

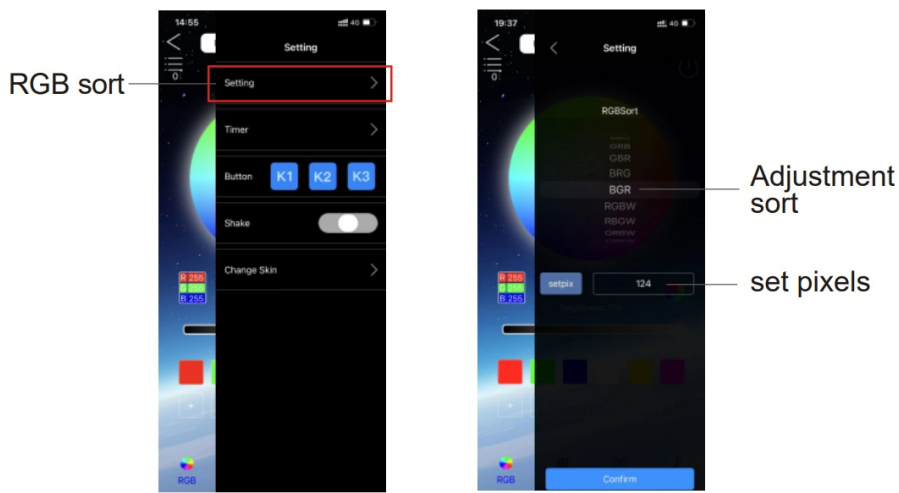
First of all, you need to turn on the Bluetooth function of your mobile phone.  
Android phone users, also turn on the location function and allow permissions.


### Instructions

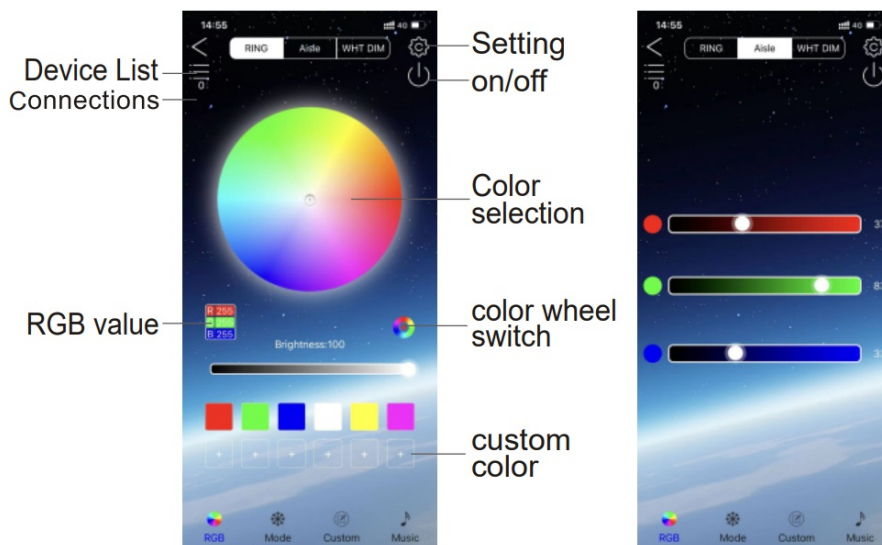
On the home page, manually pull down to refresh, the APP will automatically search for nearby devices, and click the “LED DMX 00-XXXX” device to enter the lighting control interface.




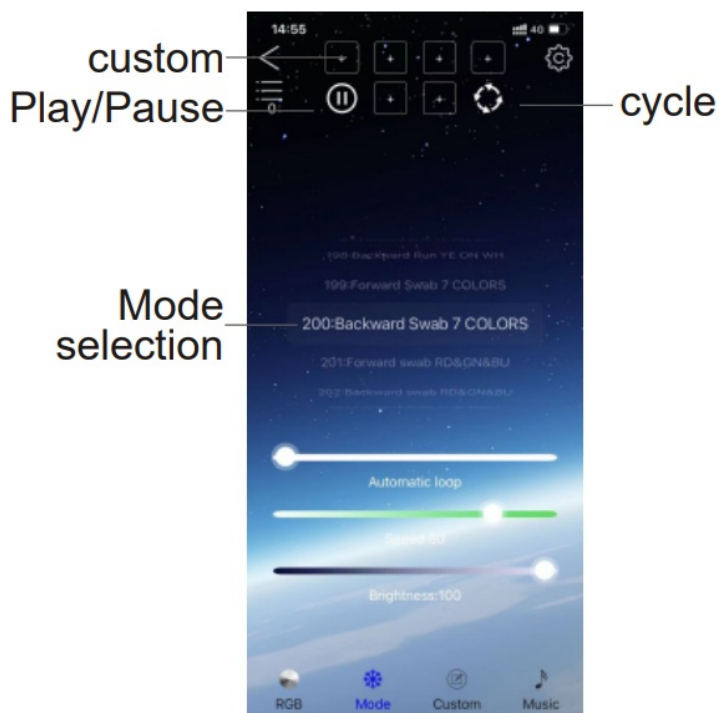
1.  **Settings:** You can set RGB sorting, timing, shaking, and changing skins.




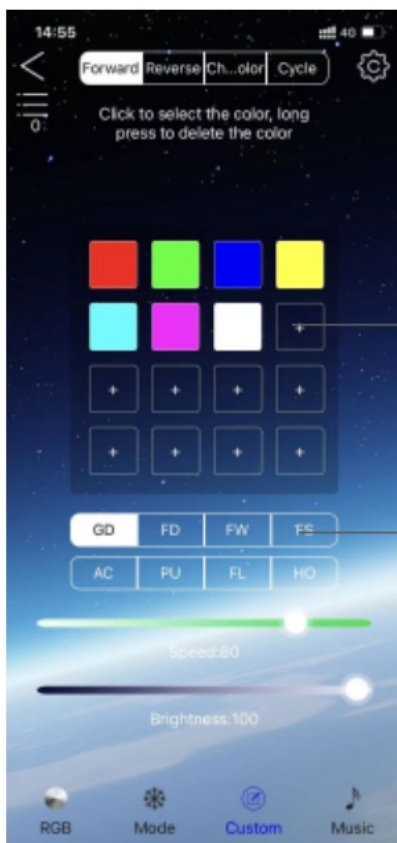
2.  **RGB:** There are three parts: color ring, channel and monochrome.



3.  **Mode:** select the desired mode, custom mode, and adjust the speed and brightness.




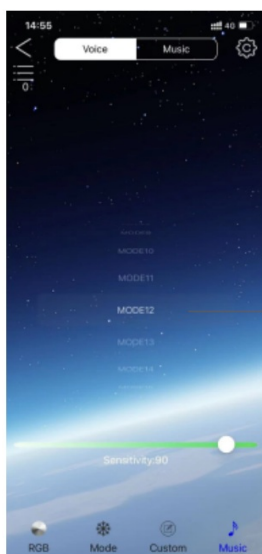
4.  **Custom:** You can customize the color, select the mode, adjust the speed and brightness.



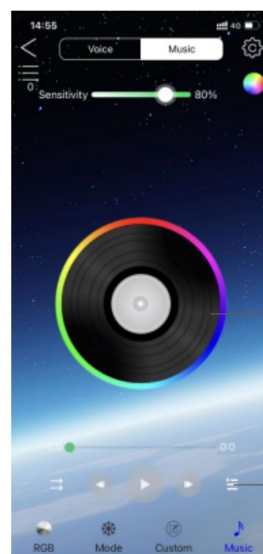
Custom color

Mode switch

5.  **Music:** There are voice control and music, there are hundreds of modes for voice control, and music needs to be played by mobile phones.




Voice control mode

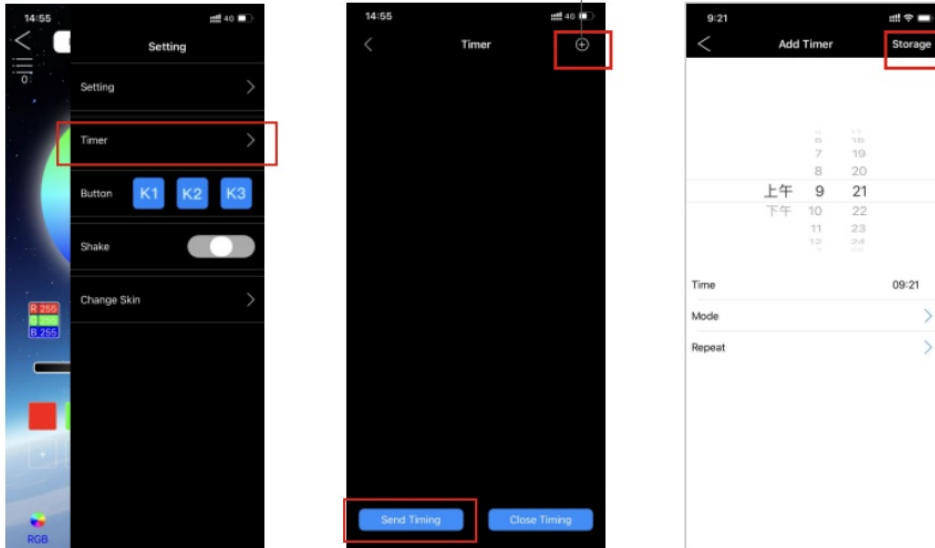


Mode switching


Song list add song

6.  **Settings:** Timing settings, click the "Add" button at the top right, after setting, click "Storage", and then "Send Timing".

## Add timer



## Documents / Resources

	<p><a href="#">LED LAMP 3FT-2PC Bluetooth Symphony Controller</a> [pdf] User Manual 3FT-2PC Bluetooth Symphony Controller, 3FT-2PC, Bluetooth Symphony Controller, Symphony Controller, Controller</p>
---	--

## References

- [User Manual](#)