



LECTROSONICS M2R Digital IEM/IFB Receiver Instruction Manual

[Home](#) » [LECTROSONICS](#) » LECTROSONICS M2R Digital IEM/IFB Receiver Instruction Manual

LECTROSONICS M2R Digital IEM/IFB Receiver Instruction Manual



WARNING: If connecting this receiver to microphone inputs, such as in a camera hop arrangement, 48 V phantom power **MUST** be turned off. Otherwise, damage to the receiver will occur.

NOTE: This equipment has been tested and found to comply with the limits for a Class B digital device, pursuant to part 15 of the FCC Rules. These limits are designed to provide reasonable protection against harmful interference in a residential installation. This equipment generates, uses and can radiate radio frequency energy and, if not installed and used in accordance with the instructions, may cause harmful interference to radio communications.

However, there is no guarantee that interference will not occur in a particular installation. If this equipment does cause harmful interference to radio or television reception, which can be determined by turning the equipment off and on, the user is encouraged to try to correct the interference by one or more of the following measures:

- Reorient or relocate the receiving antenna.
- Increase the separation between the equipment and receiver.
- Connect the equipment into an outlet on a circuit different from that to which the receiver is connected.
- Consult the dealer or an experienced radio/TV technician for help.

Contents [[hide](#)

- 1 M2R Digital IEM Receiver**
- 2 FlexList™**
- 3 Smart Tuning (SmartTune™)**
- 4 RF Front-End with Tracking Filter**
- 5 Panels and Features**
 - 5.1 Battery Status LED**
 - 5.2 RF Link LED**
 - 5.3 On/Off and Volume Knob**
 - 5.4 IR (infrared) Port**
 - 5.5 Headphone Output**
 - 5.6 USB Port**
 - 5.7 Battery Compartment**
 - 5.8 Keypad and LCD Interface**
- 6 Installing Batteries**
 - 6.1 LCD Main Window**
- 7 Navigating the Menus**
- 8 M2R LCD Menu Map**
- 9 System Setup Procedure**
 - 9.1 Step 1) Install Batteries**
 - 9.2 Step 2) Turn the power on**
 - 9.3 Step 3) Locate and Set a Clear Frequency**
 - 9.4 Step 4) Sync with a Transmitter**
 - 9.5 Step 5) Enable RF in the Transmitter**
 - 9.6 Step 6) Send Audio**
- 10 Menu Item Descriptions**
 - 10.1 SmartTune**
 - 10.2 Scan**
 - 10.3 Flex List**
 - 10.4 Frequency**
 - 10.5 Vol/Bal**
 - 10.6 Mixer**
 - 10.7 Limiter**
 - 10.8 HF Boost**
 - 10.9 Meter Mode**
 - 10.10 Clear Scan Data**
 - 10.11 Backlight**
 - 10.12 LEDs Off**
 - 10.13 Battery Type**
 - 10.14 Earphone Type**

- [10.15 Vol. Taper](#)
- [10.16 Compat. Mode](#)
- [10.17 Lock/Unlock](#)
- [10.18 Locale](#)
- [10.19 About M2R](#)
- [10.20 Default](#)
- [11 Accessories](#)
- [12 Specifications](#)
- [13 Wireless Designer Software](#)
- [14 Firmware Update Instructions](#)
- [15 Service and Repair](#)
- [16 Returning Units for Repair](#)
- [17 EU Declaration of Conformity](#)
- [18 LIMITED ONE YEAR WARRANTY](#)
- [19 Contact Us](#)
- [20 Documents / Resources](#)
 - [20.1 References](#)
- [21 Related Posts](#)

M2R Digital IEM Receiver

The M2R Digital IEM Receiver is a compact, rugged body-worn unit providing studio-grade sound quality for performers or any professionals needing to monitor detailed audio wirelessly. The M2R employs advanced antenna diversity switching during digital packet headers for seamless audio. The receiver uses digital modulation and covers UHF frequencies from 470.100 to 614.375 MHz.

NOTE: Some regions have certain frequency restrictions. Depending on LOCALE selection, the SmartTune and Scan frequency ranges are:

NA: 470.100 – 614.375 MHz

EU: 470.100 – 614.375 MHz

AU: 520.000 – 614.375 MHz

JA: 470.100 – 614.375 MHz

The headphone jack is fed from a high-quality stereo amplifier with 250 mW available to drive even inefficient headphones or earphones to sufficient levels for stage performance or other noisy environments. The receiver can select from stereo, mono from left or right channels only, or mono from both channels, giving the unit flexibility in terms of application as an IEM or IFB receiver. An intuitive interface and high resolution, color LCD on the unit provide performing artists and audio professionals alike with a comfortable and confident user experience.

The M2R also employs 2-way IR sync, so can data from the receiver can be sent to a transmitter and thus onto Wireless Designer™ Software, via USB or Ethernet. This way, frequency planning and coordination can be done quickly and confidently with on-site RF information.

FlexList™

Additionally, the M2R includes a FlexList™ mode, where up to 16 mixes can be accessed by name. This feature enables a monitor engineer to quickly find and listen to any of the performer's mixes on the stage.

A FlexList mix is a profile of a performer's personal transmitter. The mix includes the performer's name (or whatever name the user chooses for that unit), frequency, mixer settings and limiter settings. The mix is easily shared via the M2R IR port, added to the list of 16 mixes and stored until cleared by the user. The M2R allows the user to toggle between the mixes, making troubleshooting issues easy and efficient.

Smart Tuning (SmartTune™)

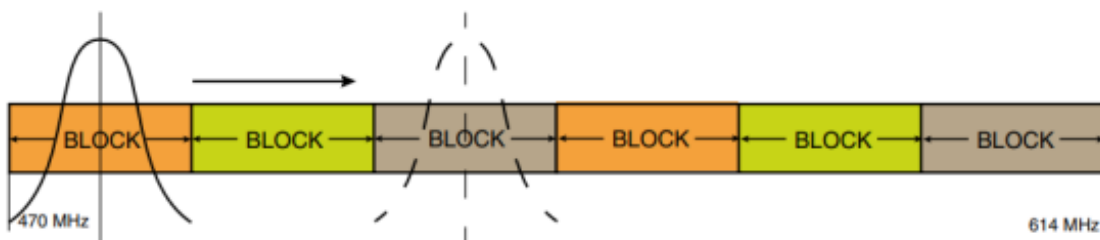
A major problem facing wireless users is finding clear operating frequencies, especially in RF saturated environments. SmartTune™ overcomes this problem by automatically scanning all the frequencies available in the receiver's frequency block and tuning the receiver to the frequency with the lowest RF interference, significantly reducing setup time.

RF Front-End with Tracking Filter

A wide tuning range is helpful in finding clear frequencies for operation, however, it also allows a greater range of interfering frequencies to enter the receiver.

The UHF frequency band, where almost all wireless microphone systems operate, is heavily populated by high power TV transmissions. The TV signals are immensely more powerful than a wireless microphone or IEM transmitter signal and will enter the receiver even when they are on significantly different frequencies than the wireless system. This powerful energy appears as noise to the receiver, and has the same effect as the noise that occurs with extreme operating range of the wireless system (noise bursts and dropouts). To alleviate this interference, front-end filters are needed in the receiver to suppress RF energy below and above the operating frequency.

The M2R receiver employs a selective frequency, tracking filter in the front-end section (the first circuit stage following the antenna). As the operating frequency is changed, the filters re-tune into six different "zones" depending on the selected carrier frequency.



In the front-end circuitry, a tuned filter is followed by an amplifier and then another filter to provide the selectivity needed to suppress interference, yet provide a wide tuning range and retain the sensitivity needed for extended operating range.

Panels and Features



Battery Status LED

When the battery status LED on the keypad glows green the batteries are good. The color changes to red at a midpoint during the runtime. When the LED begins to blink red, only a few minutes remain.

The exact point at which the LED turns red will vary with battery brand and condition, temperature and power consumption. The LED is intended to simply catch your attention, not to be an exact indicator of remaining time.

A weak battery will sometimes cause the LED to glow green immediately after the transmitter is turned on, but it will soon discharge to the point where the LED will turn red or the unit will turn off completely.

RF Link LED

When a valid RF signal from a transmitter is received, this LED will light up blue.

On/Off and Volume Knob

Turns unit on or off and controls headphone audio level.

IR (infrared) Port

Settings, including frequency, name, limiter, mix mode, Flexlist, etc. can be transferred between transmitter and receiver or receiver and receiver (M2R to M2R).

FlexList profiles can be gathered by the receiver. Frequency scan information can be sent from the receiver to the transmitter and on to Wireless Designer software for coordination purposes.

Headphone Output

A recessed, high duty cycle 3.5 mm stereo jack is provided for standard headphones and earphones.

WARNING: If connecting this receiver to microphone inputs, such as in a camera hop arrangement, 48 V phantom power **MUST** be turned off. Otherwise, damage to the receiver will occur.

If using a mono earphone with this unit, you must select “Mono” under “Earphone Type” in the menu. Otherwise, the unit will use batteries very quickly and get hot.

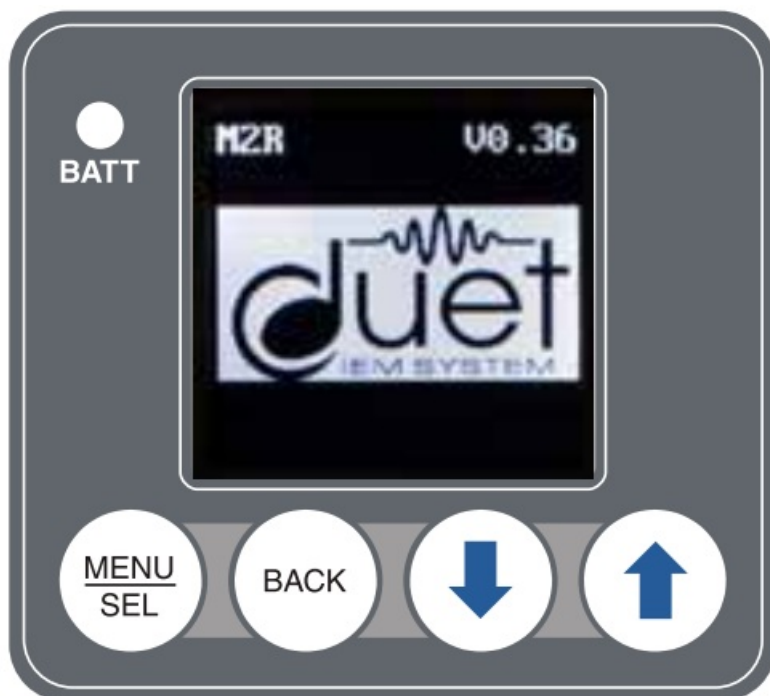
USB Port

Firmware updates via Wireless Designer are made easy with the USB port on the side panel.

Battery Compartment

Two AA batteries are installed as marked on the rear panel of the receiver. The battery door is hinged and remains attached to the housing.

Keypad and LCD Interface



MENU/SEL Button

Pressing this button enters the menu and selects menu items to enter the setup screens.

BACK Button

Pressing this button returns to the previous menu or screen.

Arrow Buttons

Used to navigate the menus. When on Main Screen, UP Button will turn LEDs on and DOWN Button will turn LEDs off.

Installing Batteries

Power is provided by two AA batteries. The batteries are connected in series by a plate in the battery door. It is suggested that you use lithium or high capacity NiMH rechargeable batteries.



Slide the battery door outward to open it

Polarity is marked on the rear panel.



LCD Main Window

RF level

The triangle graphic corresponds to the scale on the left side of the display. The scale indicates the incoming signal strength in microvolts, from 1 μV at the bottom to 1,000 μV (1 millivolt) at the top.

NOTE: RF level will turn from white to green when the signal is acquired. This is a redundant indication of the blue RF Link LED.

Diversity activity

The two antenna icons will alternately light up depending on which one is receiving the stronger signal.

Battery life indicator

The battery life icon is an approximate indicator of the remaining battery life. For the most accurate indication, the user should select "Battery Type" in the menu and select Alkaline or Lithium.

Audio level

This bar graph indicates the level of the audio entering the transmitter. The "0" refers to the level reference, as chosen in the transmitter, i.e. either +4 dBu or -10 dBV.

Mixer mode

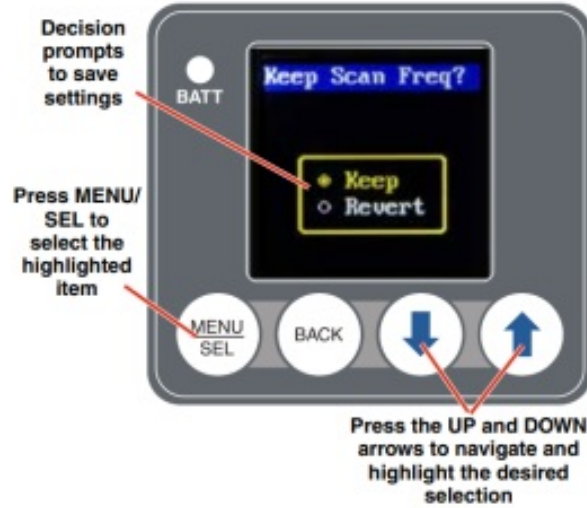
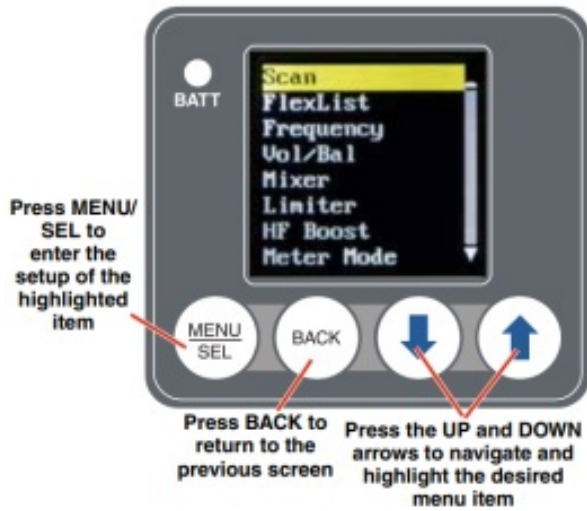
Indicates which mixer mode has been selected for the receiver. (See page 10.)

Navigating the Menus

From the Main Window, press MENU/SEL to enter the menu, then navigate with the UP and DOWN arrows to highlight the desired setup item. Press MENU/SEL to enter the setup screen for that item. Refer to the menu map on the following page.

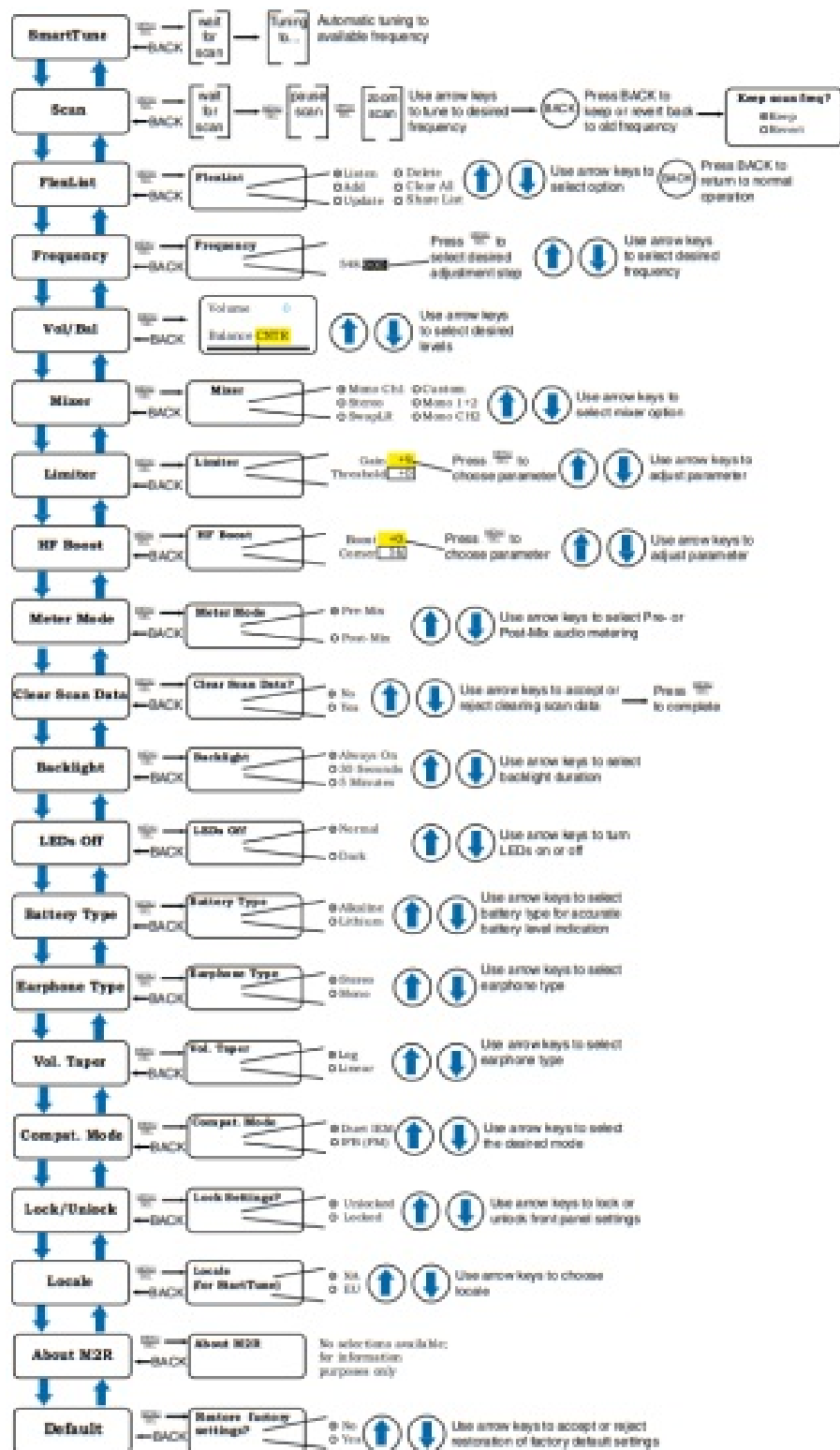


Submenus and screens for the selected item



M2R LCD Menu Map

The menus presented on the LCD are arranged in a straightforward manner, with those that are likely to be used more often located at the top of the tree.



System Setup Procedure

Step 1) Install Batteries

Install the batteries according to the diagram marked on the back of the housing. The battery door makes a connection between the two batteries. It is suggested that you use lithium or high capacity NiMH rechargeable batteries.

Step 2) Turn the power on

Power on the M2R with the On/Off/Volume knob and select the battery type in the menu. Check the BATT LED on the control panel to verify adequate power is present. The LED will glow green with good batteries.

Step 3) Locate and Set a Clear Frequency

A clear frequency can be located and set using the SmartTune function, or with manual scanning of the spectrum and selecting a frequency.

Using SmartTune

- SmartTune will scan the entire tuning range of the receiver and automatically find a clear frequency for operation. Navigate to SmartTune in the menu and press MENU/SEL. The receiver will scan the spectrum and display and set a clear frequency.
- The clear frequency will then need to be transferred to or set on the associated transmitter (see Step 4).

Manual Scanning

- Navigate to Scan in the LCD menu and press MENU/SEL. The scanning will continue across the spectrum and then wrap back and start over. Allow the scan to complete at least once. If you let the scanning continue to wrap and repeat, the scanning results will accumulate and may identify RF signals that are intermittent and might be missed with a single scan.
- Press MENU/SELECT to pause the scan. Use the UP and DOWN arrows to roughly tune the receiver by moving the cursor to an open frequency.
- Press MENU/SELECT again to zoom in for fine tuning and use the UP and DOWN arrows to scroll across the spectrum to a place with little or no RF activity (open frequency). When an open frequency has been selected, press the BACK button for the option to keep your newly selected frequency or to revert to the previous frequency



Step 4) Sync with a Transmitter

In the transmitter, use “GET FREQ” or “GET ALL” in the menu to transfer frequency or other information via the IR ports. Hold the M2R receiver IR port close to the front panel IR port on the transmitter and press GO on the transmitter.

Step 5) Enable RF in the Transmitter

In the transmitter menu, enable RF and select appropriate RF power level. The blue “link” LED on the top of the receiver should light up, indicating a valid RF link.

Step 6) Send Audio

Send an audio signal to the transmitter and the receiver audio meters should respond. Plug in headphones or earphones. (Be sure to start with the receiver volume knob at minimum!)

WARNING: If connecting this receiver to microphone inputs, such as in a camera hop arrangement, 48V phantom power **MUST** be turned off. Otherwise, damage to the receiver will occur.

If using a mono earphone with this unit, you must select “Mono” under “Earphone Type” in the menu. Otherwise, the unit will use batteries very quickly and get hot.

Menu Item Descriptions

SmartTune

SmartTune™ automates the discovery of a clear operating frequency. It does this by scanning all the available operating frequencies within the system’s frequency block range (in 100 kHz increments) and then selecting the frequency with the least amount of RF interference. When SmartTune™ is complete, it returns to the Main Window displaying the selected operating frequency.



Scan

Use the scan function to identify a usable frequency.

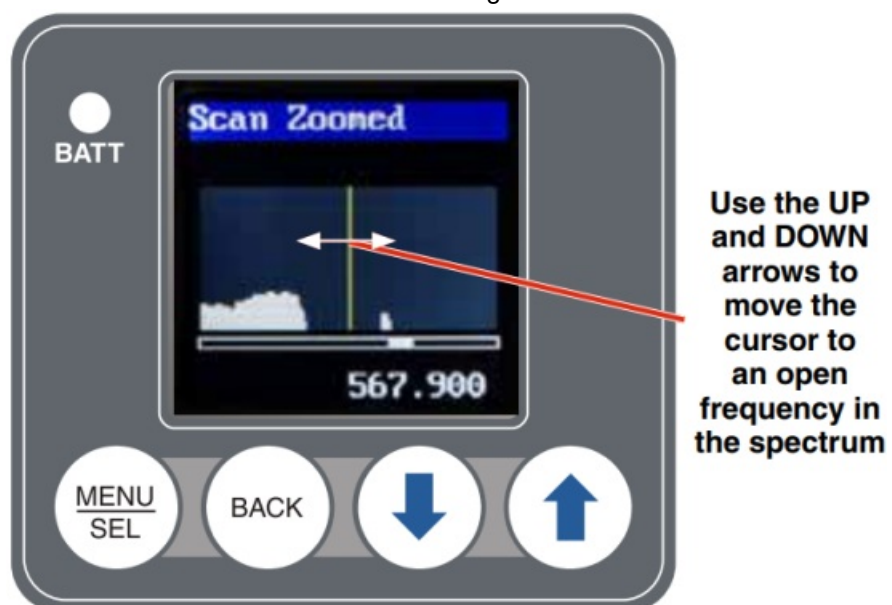
The area in red has not been scanned. Allow the scan to continue until the entire band has been scanned.



Once a full cycle has been completed, press MENU/ SELECT again to pause the scan.



Use the UP and DOWN arrows to roughly tune the receiver by moving the cursor to an open spot. Press MENU/SELECT to zoom in for fine tuning.



When a usable frequency has been selected, press the BACK button for the option to keep your newly selected frequency or to revert to where it was set before the scan.



To capture this scan info in the transmitter and thus make it available to wireless designer, use the SYNC SCAN menu function in the M2T Transmitter.

Flex List

FlexList allows the user to set up a list of profiles, by name, to quickly and easily listen to any of the mixes on site individually.

Listen – choose a mix from the list and hear what is transmitting



Add – add a mix to the available Flex List (action performed via the IR port)



Update – Update settings in a mix (frequency, etc.).
Action performed via the IR port.



Delete – Remove a mix from the Flex List



Clear All – Remove all mixes from the Flex List



Share List – Share Flex List from one M2R to another via IR port.



Frequency

Allows manual selection of the operating frequency in MHz and KHz, tunable in 25 kHz steps.



Vol/Bal

Displays the volume, from 0 to 100, Locks or Unlocks the volume control (lock shown on main screen) and adjusts the balance to left, right or center.



Volume locked display on main screen

Mixer

This screen allows you to choose a stereo mix, mono mix from either audio channel 1, channel 2 or both, or custom, allowing for varied width of the signal and how much level from each channel.



The available modes are:

- Stereo
- SwapLR
- Custom
- Mono 1&2
- Mono Ch 2

Limiter

Limiter function allows the user to set volume and dynamic range for headphone use.

Gain – The default setting (0) is linear, but if volume adjustments are needed, use the UP and DOWN arrows to adjust the audio by up to +18 dB and down to -6 dB in 3dB steps.

WARNING: Increasing the Gain can make headphone volume excessively loud. Use caution when setting and using.

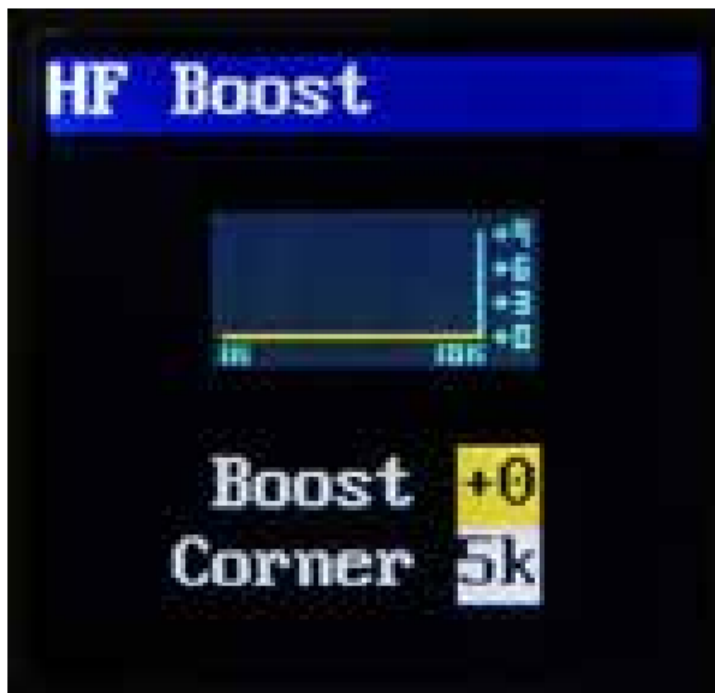
Threshold – Use the UP and DOWN arrows to adjust the threshold for limiter engagement in 3dB increments.

NOTE: A common setup to play loud and bring softer dynamics up a bit is to set the pregain at +6 or +9 dB and set the threshold for -3 or -6dB.



HF Boost

Adjusts loudness of higher frequencies in the audio output as preferred by the listener. 5 KHz or 7 KHz can be selected and boosted.



Meter Mode

Changes the appearance of the audio level indicator on the main window; can show either pre- or post mix audio levels.



Clear Scan Data

Erases scan results from memory.



Backlight

Selects the length of time the backlight on the LCD remain turned on: Always on, 30 seconds, and 5 minutes.



LEDs Off

Select Normal to turn LEDs on or Dark to turn them off.



Battery Type

Selects the type of battery being used: Alkaline or Lithium so the remaining battery meter on the home screen is as accurate as possible.



Earphone Type

Selects the type of earphone being used: Stereo (default) or Mono. When Mono is selected, no audio is fed to the right channel (ring), allowing a mono headphone plug to be used without shortened battery life.



Vol. Taper

Choose between Log or Linear taper volume control.



Compat. Mode

Compatibility mode is available to allow the receiver to operate with IFB (FM). Icon on main screen is shown when IFB (FM) Mode is active. The M2R is compatible with Lectrosonics IFB transmitters in IFB mode



Lock/Unlock

The front panel controls can be locked to prevent unwanted changes. To lock/unlock, hold UP + DOWN.



Locale

North America (NA) and Australia (AU) have certain frequency restrictions, and the restricted frequencies are not available in SmartTune. When chosen, these locales include the following available frequency selections in SmartTune:



NA: 470.100-614.375 MHz

EU: 470.100-614.375 MHz

AU: 520.000-614.375 MHz

About M2R

Displays general information about the M2R, including serial number and the versions for both FPGA and main firmware running in the receiver.



Default

Returns all settings to the factory defaults as shown in the table below.



Menu Item	Setting
Flexlist	Cleared
Vol/Bal	Centered
Mixer Mode	Stereo
Limiter	Pregain 0
HF Boost	0
Meter Mode	Post-Mix
Backlight	Always On
Battery Type	Lithium
Earphone Type	Stereo
Settings	Unlock
Receiver Name	M2R IEM Receiver
Frequency	Depends on Locale: NA/EU 512.000 (TxA) 590.000 (TxB) AU 525.000 (TxA) 590.000 (TxB)

Accessories

- **26895**

Wire belt clip.



- **21926**

USB cable for firmware updates



- **35854 (included in box)**

Hex key wrench for tightening screws on volume knob



Part 35854

- **LRSHOE**

This optional kit includes the accessories needed to mount the M2R on a standard cold shoe using the wire belt clip that comes with the receiver.



- **P1291**

USB port dust cover.



- **LTBATELIM**

Battery Eliminator for LT, DBu and DCHT transmitters, and M2R; camera hop and similar applications. Optional power cables include: P/N 21746 right angle, locking cable; 12 in. length P/N 21747 right angle, locking cable; 6 ft. length; DCR12/A5U universal power supply for AC power.



Specifications

- Operating Spectrum (dependent on Locale): NA: 470.100 – 614.375 MHz
- EU: 470.100 – 614.375 MHz
- AU: 520.000 – 614.375 MHz
- JA: 470.100 – 614.375 MHz
- Modulation Type: 8PSK with Forward Error Correction
- Latency: (overall system)
- Digital Source: 1.6 ms plus
- Dante network
- Analog Source: <1.4 ms
- Audio Performance:
- Frequency Response: 10 Hz – 12 KHz, +0, -3dB
- THD+N: 0.15% (1kHz @ -10 dBFS)
- Dynamic Range: >95 dB weighted
- Adjacent Channel Isolation >85dB
- Diversity Type: Switched antenna phase, during packet headers
- Audio Output: 3.5 mm stereo jack
- Power requirements: 2 x AA batteries (3.0V)
- Battery life: 7 hours; (2) Lithium AA
- Power consumption: 1 W
- Dimensions: Height: 3.0 in. / 120 mm. (with knob)
- Width: 2.375 in. / 60.325 mm.
- Depth: .625 in. / 15.875 mm.
- Weight: 9.14 ounces / 259 grams (with batteries)

Specifications subject to change without notice

Wireless Designer Software

Download the Wireless Designer software installer from the web sites under the SUPPORT tab at:

<http://www.lectrosonics.com/US>

Wireless Designer only needs to be installed the first time the software is used. Once the software is installed,

updates are available by simply clicking on an item in the Help Menu.

NOTE: If Wireless Designer is already installed, you must uninstall it before attempting to install a new copy.

Firmware Update Instructions

Firmware updates are made with a file downloaded from the web site and the M2T or M2r connected via USB.

The USB port requires a micro-B male plug on the connecting cable. The other end of the cable would normally be a USB A-Type male connector to fit the most common type of USB jack used on computers.

Refer to Help in Wireless Designer software for the procedure.

Service and Repair

If your system malfunctions, you should attempt to correct or isolate the trouble before concluding that the equipment needs repair. Make sure you have followed the setup procedure and operating instructions. Check the interconnecting cables.

We strongly recommend that you do not try to repair the equipment yourself and do not have the local repair shop attempt anything other than the simplest repair. If the repair is more complicated than a broken wire or loose connection, send the unit to the factory for repair and service. Don't attempt to adjust any controls inside the units.

Once set at the factory, the various controls and trimmers do not drift with age or vibration and never require readjustment. There are no adjustments inside that will make a malfunctioning unit start working.

LECTROSONICS' Service Department is equipped and staffed to quickly repair your equipment. In warranty repairs are made at no charge in accordance with the terms of the warranty. Out-of-warranty repairs are charged at a modest flat rate plus parts and shipping. Since it takes almost as much time and effort to determine what is wrong as it does to make the repair, there is a charge for an exact quotation. We will be happy to quote approximate charges by phone for out-of-warranty repairs.

Returning Units for Repair

For timely service, please follow the steps below:

- **A.** DO NOT return equipment to the factory for repair without first contacting us by e-mail or by phone. We need to know the nature of the problem, the model number and the serial number of the equipment. We also need a phone number where you can be reached 8 A.M. to 4 P.M. (U.S. Mountain Standard Time).
- **B.** After receiving your request, we will issue you a return authorization number (R.A.). This number will help speed your repair through our receiving and repair departments. The return authorization number must be clearly shown on the outside of the shipping container.
- **C.** Pack the equipment carefully and ship to us, shipping costs prepaid. If necessary, we can provide you with the proper packing materials. UPS or FEDEX is usually the best way to ship the units. Heavy units should be "double-boxed" for safe transport.
- **D.** We also strongly recommend that you insure the equipment, since we cannot be responsible for loss of or damage to equipment that you ship. Of course, we insure the equipment when we ship it back to you.

EU Declaration of Conformity

LECTROSONICS, INC.
581 Laser Road
Rio Rancho, NM 87124 USA

Declares under our sole responsibility that the following product
Model: M2R

Wireless microphone receiver
is in conformity with the provisions of the following EC directive(s) (including applicable amendments) and are
designed and manufactured in accordance with the harmonized standards:

Docum ent	Description	Date/V ersion
RL 2014/53 /EU	Radio Equipment Directive 2014/53/EU (RED)	2014-0 4
EN 300 422-1	Wireless Microphones; Audio PMSE up to 3 GHz; Part 1: Class A Receivers	V2.1.2 12017- 01)
	Electromagnetic Compatibility	
EN 301 489-1	Electro Magnetic Compatibility (EMC) standard for radio equipment and services; Co mmon Technical Requirements	V2.2.0 (2017- 03)
EN 301 489-9	Specific Conditions for wireless microphones, similar Radio Frequency (RF) audio li nk equipment, cordless audio and in-ear monitoring devices	V2.1.1 (2017- 03)
	Safety and Health	
EN 600 65-1	Audio, video and similar electronic apparatus – Safety Requirements.	2014
RL 2011/65 /EU	RoHS Directive 2011/651EU: Restriction of the use of certain hazardous substances (RoHS Recast)	2011

The EU type examination was performed by notified body Bay Area Compliance Laboratories.
Software version of M2R: v0.36



Robert Cummings
V.P. Engineering
Lectrosonics, Inc.

LIMITED ONE YEAR WARRANTY

The equipment is warranted for one year from date of purchase against defects in materials or workmanship provided it was purchased from an authorized dealer. This warranty does not cover equipment which has been abused or damaged by careless handling or shipping. This warranty does not apply to used or demonstrator equipment.

Should any defect develop, Lectrosonics, Inc. will, at our option, repair or replace any defective parts without charge for either parts or labor. If Lectrosonics, Inc. cannot correct the defect in your equipment, it will be replaced at no charge with a similar new item. Lectrosonics, Inc. will pay for the cost of returning your equipment to you. This warranty applies only to items returned to Lectrosonics, Inc. or an authorized dealer, shipping costs prepaid, within one year from the date of purchase.

This Limited Warranty is governed by the laws of the State of New Mexico. It states the entire liability of Lectrosonics Inc. and the entire remedy of the purchaser for any breach of warranty as outlined above. NEITHER LECTROSONICS, INC. NOR ANYONE INVOLVED IN THE PRODUCTION OR DELIVERY OF THE EQUIPMENT SHALL BE LIABLE FOR ANY INDIRECT, SPECIAL, PUNITIVE, CONSEQUENTIAL, OR INCIDENTAL DAMAGES ARISING OUT OF THE USE OR INABILITY TO USE THIS EQUIPMENT EVEN IF LECTROSONICS, INC. HAS BEEN ADVISED OF THE POSSIBILITY OF SUCH DAMAGES. IN NO EVENT SHALL THE LIABILITY OF LECTROSONICS, INC. EXCEED THE PURCHASE PRICE OF ANY DEFECTIVE EQUIPMENT.

This warranty gives you specific legal rights. You may have additional legal rights which vary from state to state.

Contact Us

Lectrosonics USA:

Mailing address: Lectrosonics, Inc. PO Box 15900 Rio Rancho, NM 87174 USA

Shipping address: Lectrosonics, Inc. 561 Laser Rd., Suite 102 Rio Rancho, NM 87124 USA

Telephone: +1 (505) 892-4501 (800) 821-1121 Toll-free US and Canada Fax +1 (505) 892-6243

Web: www.lectrosonics.com

E-mail: service.repair@lectrosonics.com sales@lectrosonics.com

Lectrosonics Canada:

Mailing Address: 720 Spadina Avenue, Suite 600 Toronto, Ontario M5S 2T9 Telephone: +1 (416) 596-2202 (877) 753-2876 Toll-free Canada (877) 7LECTRO Fax (416) 596-6648

E-mail: Sales: colinb@lectrosonics.com Service: joeb@lectrosonics.com

581 Laser Road NE
Rio Rancho, NM 87124 USA

www.lectrosonics.com


+1(505) 892-4501

fax +1(505) 892-6243

(800) 821-1121 US and Canada



Documents / Resources

 The image shows the front cover of a technical manual. At the top left, there is a small graphic of the receiver device with signal waves. Below it, the text "M2R Digital IEM/IFB Receiver" is visible. The cover also features a list of features and a CE mark at the bottom right.	<p>LECTROSONICS M2R Digital IEM/IFB Receiver [pdf] Instruction Manual M2R, Digital IEM IFB Receiver, IFB Receiver, Receiver, Digital IEM Receiver</p>
--	---

References

- [🌐 Lectrosonics: Quality wireless microphone, encrypted digital wireless and DSP audio processing systems](#)