



LECTRON Tesla J1772 Charging Adapter User Manual

[Home](#) » [LECTRON](#) » LECTRON Tesla J1772 Charging Adapter User Manual 

LECTRON Tesla J1772 Charging Adapter User Manual



In the Box

1 x Tesla to J1772 Adapter



Contents

- [1 Safety Information](#)
- [2 Compatibility](#)
- [3 Introduction to Parts](#)
 - [3.1 How to use](#)
- [4 FAQ](#)
- [5 Get More Support](#)
- [6 Specifications](#)
- [7 Documents / Resources](#)
 - [7.1 References](#)
- [8 Related Posts](#)

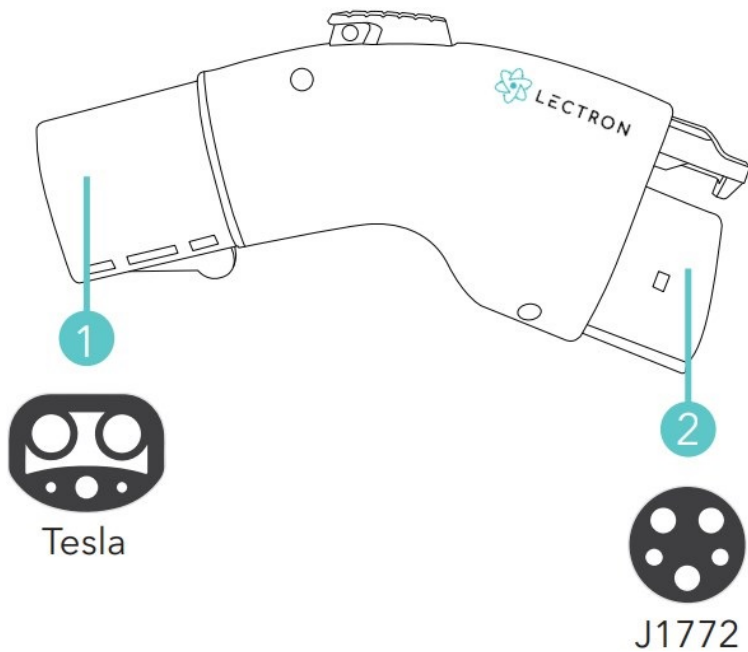
Safety Information

- When connecting to Tesla Destination Chargers, make sure that the output is less than 48A.
- When connecting the Lectron Adapter to the Tesla Charger, always wait 30s before connecting the other end to your J1772 EV.

Compatibility

- Tesla High Power Wall Connector
- Tesla Destination Charger Gen 1, 2, 3
- Tesla Mobile Connector

Introduction to Parts



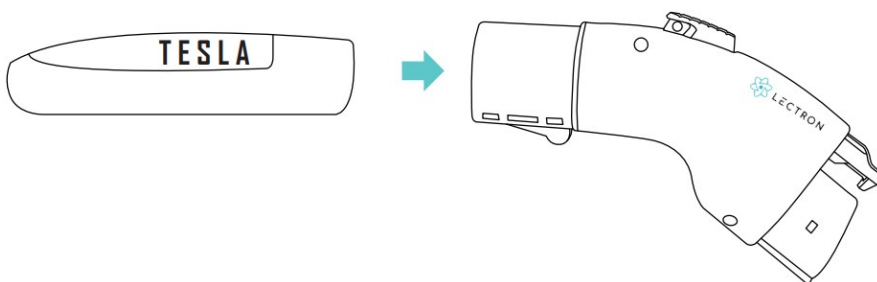
1. Tesla Adapter plug
2. Lectron J1772 plug



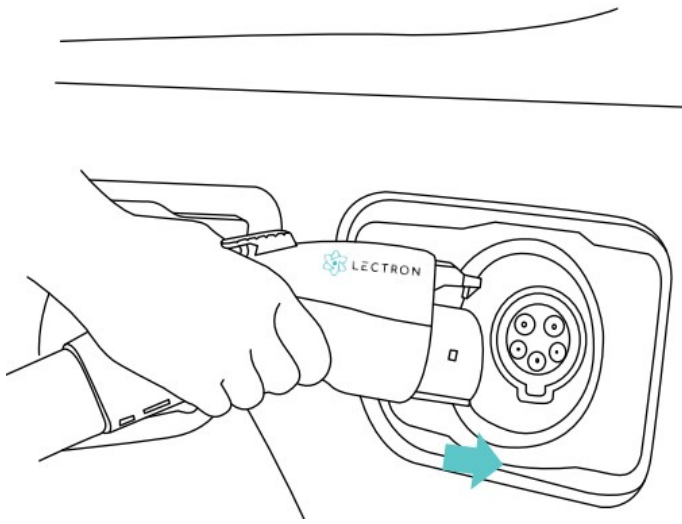
Warnings

- Read this manual before using the Lectron Adapter. Failure to follow the instructions or warnings in this document can result in fire, electrical shock, serious injury.
- Do not attempt to open, disassemble, repair, tamper with, or modify the adapter.
- Do not let it get wet or near heat sources.

How to use



Step1: Connect the Tesla Charger to the Lectron Adapter. Wait at least 30s before connecting it to your J1772 electric vehicle.



Step 2: Firmly plug in the Lectron Adapter into your J1772 electric vehicle.

Note: If you are using Tesla Destination Charger or a Tesla Wall Connector and see a red light blinking on the charger, immediately adjust the charger current to 48A or below (set the rotary switch to position 1-8).

FAQ

Is the Lectron Adapter waterproof?

The Lectron Adapter is IP54-rated making it weatherproof. However, it is recommended to not let the Lectron Adapter get wet.

How fast can this fully charge my EV?

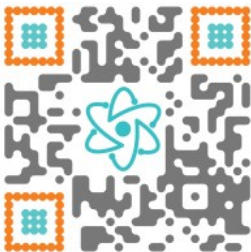
The maximum power output is 11.5kW (48A, 240V). The exact charging speed depends on various factors: use of a portable Tesla charger, different Tesla charging stations models, different J1772 EV car models used with different battery sizes, etc...

Can you leave the adapter connected to the Tesla wall charger?

It is recommended to disconnect the Lectron Adapter from the Tesla Charger after each use.

Get More Support

Scan the QR code below or **email** us at: contact@ev-lectron.com.



Specifications

Voltage: Max 250V AC

Current: Max 48A

Operating temperature: -22°F to +122°F

Charging port: SAE J1772 Standard


Connector port: Tesla US

Weight: 1.12 lbs



Tesla Charger is not included. Lectron is not affiliated with Tesla Inc. Lectron is a trademark of Dropcases Ltd. Tesla Charger is a trademark of Tesla Inc.

For more information, visit:
www.ev-lectron.com
or contact us at
contact@ev-lectron.com

Documents / Resources

	LECTRON Tesla J1772 Charging Adapter [pdf] User Manual Tesla J1772 Charging Adapter, Tesla J1772, Charging Adapter, Adapter
---	--

References

-  [Full Stack Metaverse Solutions - Lectron](#)
-  [Lectron Electric Vehicle Charging — Lectron EV](#)