



80-602900
MY FIRST
LEARNING
TABLET



LeapFrog 80-602900 My First Learning Tablet User's Guide

[Home](#) » [LeapFrog](#) » LeapFrog 80-602900 My First Learning Tablet User's Guide 

Contents

- [1 LeapFrog 80-602900 My First Learning Tablet](#)
- [2 INTRODUCTION](#)
- [3 GETTING STARTED](#)
- [4 PRODUCT FEATURES](#)
- [5 ACTIVITIES](#)
- [6 CARE & MAINTENANCE](#)
- [7 TROUBLESHOOTING](#)
- [8 FREQUENTLY ASKED QUESTIONS](#)
- [9 VIDEO – PRODUCT OVERVIEW](#)
- [10 References](#)
- [11 Related Posts](#)



LeapFrog 80-602900 My First Learning Tablet



INTRODUCTION

Thank you for purchasing My First Learning Tablet™! Learning is a tap away! Kids can learn about colors, letters, numbers, music and more on a tablet that's made just for them. This interactive toy lets children role-play with a tablet just like mom and dad!



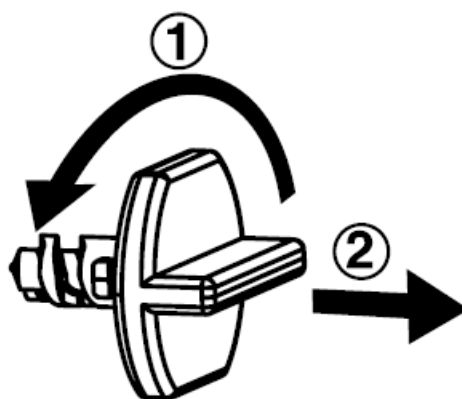
INCLUDED IN THIS PACKAGE

- One My First Learning Tablet™
- One parent's guide

WARNING: All packing materials such as tape, plastic sheets, packaging locks, removable tags, cable ties and packaging screws are not part of this toy, and should be discarded for your child's safety.

NOTE: Please keep this parent's guide as it contains important information.

Unlock the packaging locks:

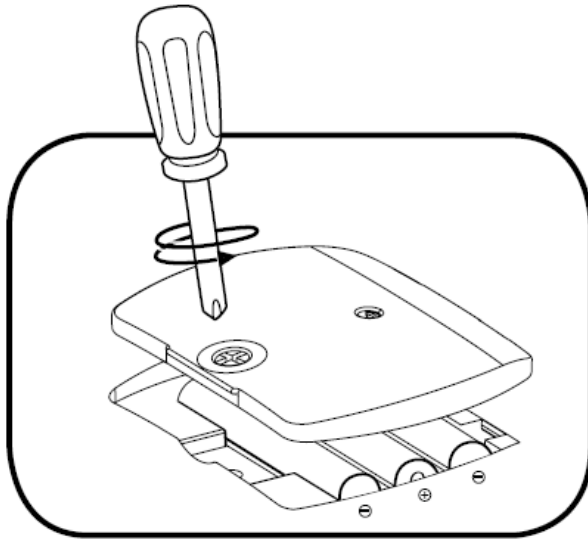


1. Rotate the packaging locks 90 degrees counterclockwise.
2. Pull out the packaging locks and discard.

GETTING STARTED

BATTERY INSTALLATION

1. Make sure the unit is turned OFF.
2. Locate the battery cover on the bottom of the unit.
3. Use a screwdriver to loosen the screw and open the battery cover.
4. Install 3 new AAA (AM-4/LR03) batteries into the battery box as illustrated. (The use of new alkaline batteries is recommended for maximum performance.)
5. Replace the battery cover and tighten the screw to secure.



BATTERY NOTICE

- Use new alkaline batteries for maximum performance.
- Use only batteries of the same or equivalent type as recommended.
- Do not mix different types of batteries: alkaline, standard (carbon-zinc) or rechargeable, or new and used batteries.
- Do not use damaged batteries.
- Insert batteries with the correct polarity.
- Do not short-circuit the battery terminals.
- Remove exhausted batteries from the toy.
- Remove batteries during long periods of non-use.
- Do not dispose of batteries in fire.
- Do not charge non-rechargeable batteries.
- Remove rechargeable batteries from the toy before charging (if removable).
- Rechargeable batteries are only to be charged under adult supervision.

PRODUCT FEATURES

1. Off/Low/High Volume Control Switch

To turn the unit ON, slide the Off/Low/High Volume Control Switch to the Low Volume () or the High Volume

() position. To turn the unit OFF, slide the Off/Low/High Volume Control Switch to the OFF (●) position.

2. **Touch Sensitive Light-Up Screen**

Use your finger to swipe the screen left, right, up or down.

3. **Mode Selector**

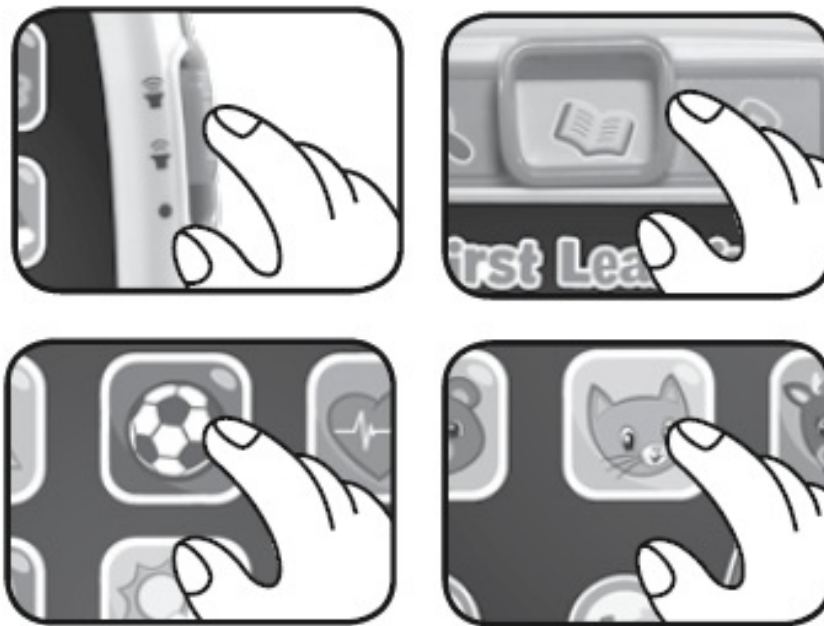
Choose from Explore Mode, Learn Mode, or Music Mode!

4. **Activity Icons**

Touch the Activity Icons to play a variety of fun and educational activities and hear cute phrases, music and sound effects.

5. **Automatic Shut Off**

To preserve battery life, My First Learning Tablet™ will automatically power down after approximately 45 seconds without input. The toy can be turned on again by pressing the Home Button or changing modes.



NOTE: If the unit repeatedly powers down quickly we suggest changing the batteries.

ACTIVITIES

1. **Activity Icons**

Touch the 20 Activity Icons to learn about letters, numbers, shapes, animals, colors, weather, fun facts, counting, stories and foreign languages. The lights will flash with the sounds.

2. **Dock Icons**

Touch the Phone, Clock, Violet, Camera and Music Player icons to learn about greetings, time concepts, pretend play and music.

3. **Home Button**

Press the Home Button for role-play fun.



CARE & MAINTENANCE

1. Keep the unit clean by wiping it with a slightly damp cloth.
2. Keep the unit out of direct sunlight and away from any direct heat sources.
3. Remove the batteries when the unit is not in use for an extended period of time.
4. Do not drop the unit on a hard surface and do not expose the unit to excess moisture.

TROUBLESHOOTING

If for some reason the program/activity stops working, please follow these steps:

1. Turn the unit OFF.
2. Interrupt the power supply by removing the batteries.
3. Let the unit stand for a few minutes, then replace the batteries.
4. Turn the unit back ON. The unit will now be ready to play again.
5. If the unit still does not work, replace it with an entire set of new batteries.

Environmental phenomena.

- The unit may malfunction if subjected to radio-frequency interference.
- It should revert to normal operation when the interference stops.
- If not, it may become necessary to turn the power OFF and back ON or remove and reinstall the batteries.
- In the unlikely event of an electrostatic discharge, the unit may malfunction and lose memory, requiring the user to reset the device by removing and reinstalling the batteries.

IMPORTANT NOTE: If the problem persists, please call our Consumer Services Department at 1-[800-701-5327](tel:800-701-5327) in the U.S. or email support@leapfrog.com. Creating and developing LeapFrog® products is accompanied by a responsibility that we take very seriously. We make every effort to ensure the accuracy of the information, which forms the value of our products. However, errors sometimes can occur. It is important for you to know that we stand behind our products and encourage you to contact us with any problems and/or suggestions you might have. A service representative will be happy to help you.

NOTE: This equipment has been tested and found to comply with the limits for a Class B digital device, pursuant to Part 15 of the FCC Rules. These limits are designed to provide reasonable protection against harmful interference in a residential installation. This equipment generates, uses and can radiate radio frequency energy and, if not installed and used in accordance with the instructions, may cause harmful interference to radio communications. However, there is no guarantee that interference will not occur in a particular installation. If this equipment does cause harmful interference to radio or television reception, which can be determined by turning the equipment off and on, the user is encouraged to try to correct the interference by one or more of the following measures:

- Reorient or relocate the receiving antenna.
- Increase the separation between the equipment and receiver.
- Connect the equipment to an outlet on a circuit different from that to which the receiver is connected.
- Consult the dealer or an experienced radio/TV technician for help.

THIS DEVICE COMPLIES WITH PART 15 OF THE FCC RULES. OPERATION IS SUBJECT TO THE FOLLOWING TWO CONDITIONS:

1. THIS DEVICE MAY NOT CAUSE HARMFUL INTERFERENCE, AND
2. THIS DEVICE MUST ACCEPT ANY INTERFERENCE RECEIVED, INCLUDING INTERFERENCE THAT MAY CAUSE UNDESIRE OPERATION.

CAN ICES-3 (B)/NMB-3(B)

Caution: Changes or modifications not expressly approved by the party responsible for compliance could void the user's authority to operate the equipment.

Visit our website for more information about our products, downloads, resources, and more. leapfrog.com For warranty information, please visit leapfrog.com/warranty.

LeapFrog Enterprises, Inc., a subsidiary of VTech Holdings Limited. TM & © 2017 LeapFrog Enterprises, Inc. All rights reserved. 91-003356-000 US

FREQUENTLY ASKED QUESTIONS

What is the LeapFrog 80-602900 My First Learning Tablet?

The LeapFrog 80-602900 My First Learning Tablet is an educational toy designed for toddlers, simulating a tablet experience with interactive features to promote early learning.

What are the dimensions of the LeapFrog 80-602900 My First Learning Tablet?

The product dimensions are 7.89 inches in length, 6.83 inches in width, and 0.1 inches in height.

How much does the LeapFrog 80-602900 My First Learning Tablet weigh?

The LeapFrog 80-602900 weighs 12 ounces, making it a manageable size for young children.

What is the item model number for the LeapFrog My First Learning Tablet?

The item model number for this product is 80-602900.

What is the manufacturer recommended age for the LeapFrog 80-602900 My First Learning Tablet?

The LeapFrog 80-602900 is recommended for children aged 12 months to 3 years.

What type of batteries does the LeapFrog 80-602900 My First Learning Tablet require?

The LeapFrog 80-602900 requires 2 AA batteries to operate.

What is the price of the LeapFrog 80-602900 My First Learning Tablet?

The LeapFrog 80-602900 is priced at \$19.99.

What is the warranty period for the LeapFrog 80-602900 My First Learning Tablet?

The warranty period for the LeapFrog 80-602900 is 3 months.

Who is the manufacturer of the LeapFrog 80-602900 My First Learning Tablet?

The manufacturer of the LeapFrog 80-602900 My First Learning Tablet is VTech.

What features does the LeapFrog 80-602900 My First Learning Tablet include?

The LeapFrog 80-602900 features interactive content such as learning games, music, and educational activities designed for early childhood development.

How is the LeapFrog 80-602900 My First Learning Tablet powered?

The LeapFrog 80-602900 My First Learning Tablet is powered by 2 AA batteries.

Why isn't my LeapFrog 80-602900 My First Learning Tablet turning on?

Ensure the batteries are properly installed and fully charged. Check the battery compartment for any corrosion or loose connections that might be preventing the tablet from powering on.

What should I do if the sounds on my LeapFrog 80-602900 My First Learning Tablet are not working?

Verify that the volume is turned up. Check the batteries to ensure they have enough power. If the issue persists, inspect the speaker area for any blockages or damage.

Why are the lights on my LeapFrog 80-602900 My First Learning Tablet flickering?

Flickering lights can be caused by loose batteries or poor connections in the battery compartment. Try removing and reinserting the batteries or replacing them with fresh ones.

How can I fix the buttons if they are not responding on my LeapFrog 80-602900 My First Learning Tablet?

Ensure the batteries are fully charged and properly installed. Clean the buttons to remove any dirt or debris.

that might be preventing them from making proper contact. If the issue persists, it could be a problem with the internal circuitry.

VIDEO – PRODUCT OVERVIEW



[Download the PDF Link: LeapFrog 80-602900 My First Learning Tablet User's Guide First-Learning-Tablet-Users-Guide.mp4](#)

REFERENCE: [LeapFrog 80-602900 My First Learning Tablet User's Guide -Device.Report](#)

References

- [User Manual](#)

[Manuals+](#), [Privacy Policy](#)

This website is an independent publication and is neither affiliated with nor endorsed by any of the trademark owners. The "Bluetooth®" word mark and logos are registered trademarks owned by Bluetooth SIG, Inc. The "Wi-Fi®" word mark and logos are registered trademarks owned by the Wi-Fi Alliance. Any use of these marks on this website does not imply any affiliation with or endorsement.