




LeapFrog 80-194850 2-in-1 Touch and Learn Table User Guide

[Home](#) » [LeapFrog](#) » LeapFrog 80-194850 2-in-1 Touch and Learn Table User Guide 



2-in-2-in- Touch & Learn Tablet Touch & Learn Tablet™



Parent's Guide

This guide contains important information. Please keep it for future reference.
91-003838-000 US

Contents

- [1 INTRODUCTION](#)
- [2 INCLUDED IN THIS PACKAGE](#)
- [3 Unlock the Packaging Locks:](#)
- [4 GETTING STARTED](#)
- [5 BATTERY NOTICE](#)
- [6 PRODUCT FEATURES](#)
- [7 CARE & MAINTENANCE](#)
- [8 TROUBLESHOOTING](#)
- [9 Environmental Phenomena](#)
- [10 IMPORTANT NOTE:](#)
- [11 Documents / Resources](#)
- [12 Related Posts](#)

INTRODUCTION

Thank you for purchasing the **2-in-1 Touch & Learn Tablet™**! Enjoy a new kind of learning with the pretend tablet that has activities on one side and stories on the other. Twist and flip the tablet to change modes and explore 14+ touch-and-learn areas on each page!



INCLUDED IN THIS PACKAGE

- 2-in-1 Touch & Learn Tablet™
- Parent's guide

WARNING

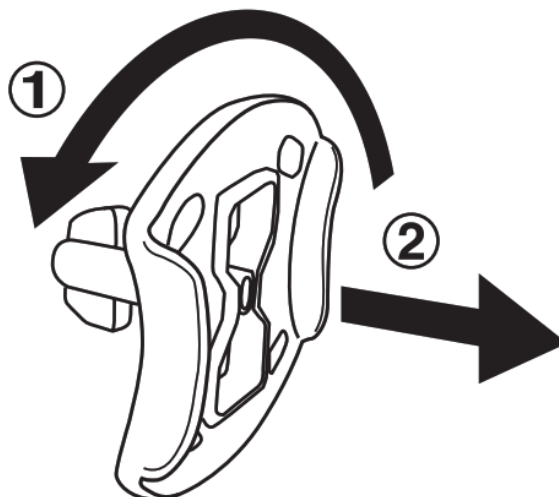
All packing materials such as tape, plastic sheets, packaging locks, removable tags, cable ties, and packaging screws are not part of this toy and should be discarded for your child's safety.

NOTE

Please keep this parent's guide as it contains important information.

Unlock the Packaging Locks:

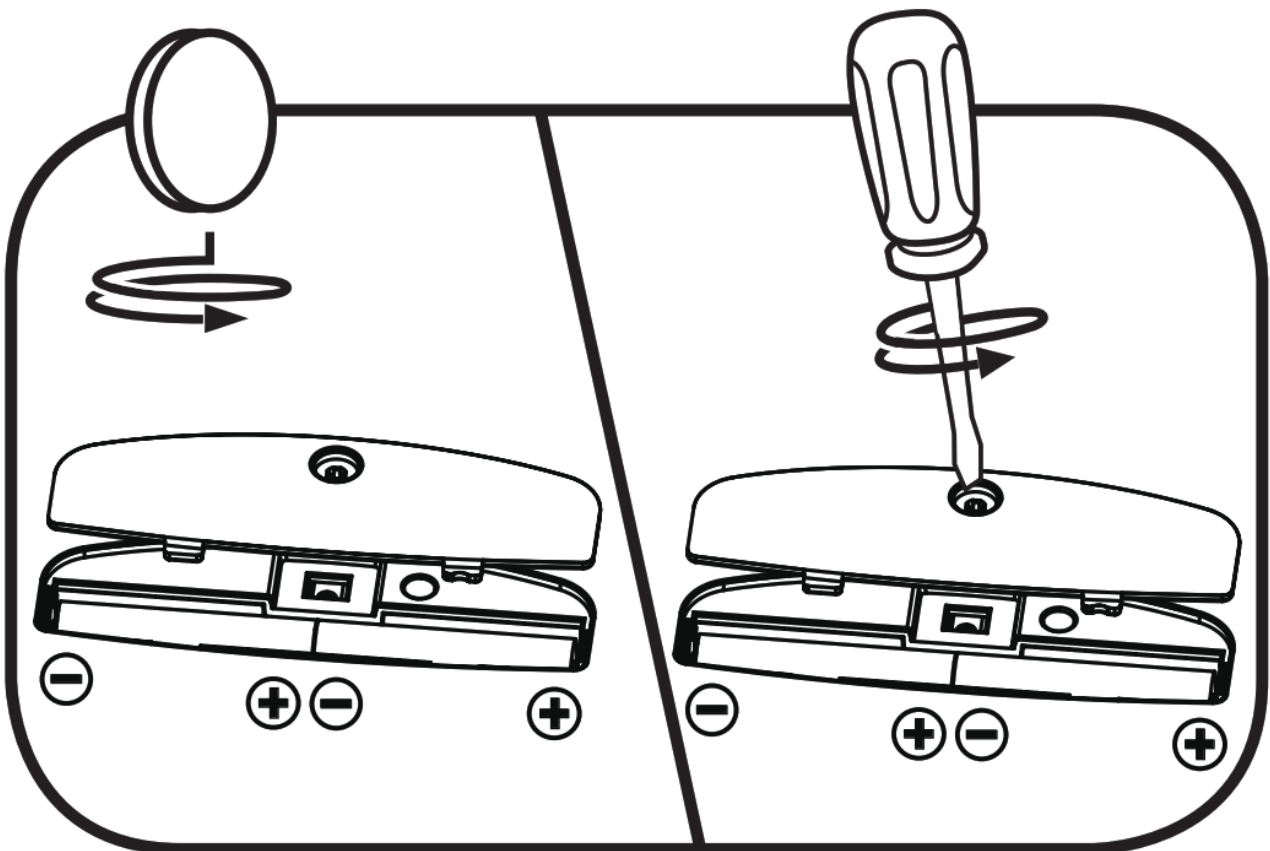
1. Rotate the packaging locks 90 degrees counterclockwise.
2. Pull out the packaging locks and discard them.



GETTING STARTED

BATTERY REMOVAL AND INSTALLATION

1. Make sure the unit is turned Off.
2. Find the battery cover located on the back of the unit and use a screwdriver or coin to loosen the screw and open the battery cover.
3. Remove old batteries by pulling up one end of each battery.
4. Install 2 new AA (AM-3/LR6) batteries following the diagram inside the battery box.
5. Replace the battery cover and tighten the screw to secure.



BATTERY NOTICE

- Use new alkaline batteries for maximum performance.
- Use only batteries of the same or equivalent type as recommended.
- Do not mix different types of batteries: alkaline, standard (carbon-zinc) or rechargeable, or new and used batteries.
- Do not use damaged batteries.
- Insert batteries with the correct polarity (+ and -).
- Do not short-circuit the battery terminals.
- Remove exhausted batteries from the toy.
- Remove batteries during long periods of non-use.
- Do not dispose of batteries in a fire.
- Do not charge non-rechargeable batteries.

- Remove rechargeable batteries from the toy before charging (if removable).
- Rechargeable batteries are only to be charged under adult supervision.

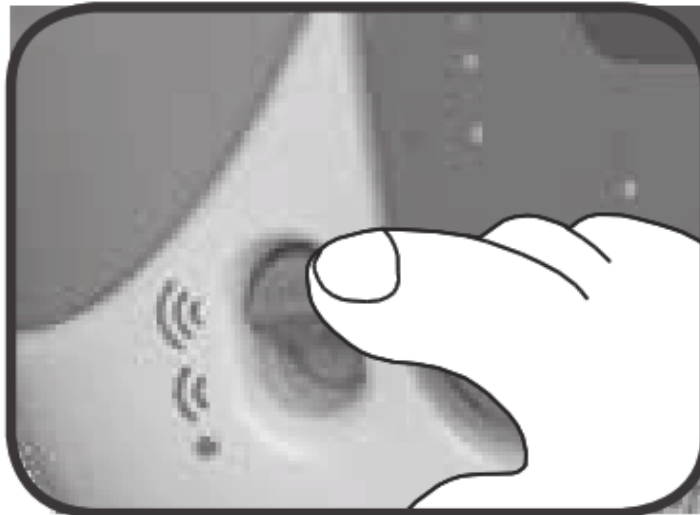
NOTE

If the unit powers down or if the light fades out during play, please install a new set of batteries.

PRODUCT FEATURES

1. Off/Low/High Volume Selector

Slide the Off/Low/High Volume Selector to turn the toy on and select the volume.



2. Control Handle

To switch between the Activity and Story Pages, press the Lock Button and twist the Control Handle.

- Activity to Story Pages: Press and hold the Lock Button, then twist the Control Handle in the direction of the arrow.



- Story to Activity Pages: Press and hold the Lock Button, then twist the Control Handle in the direction of the arrow.

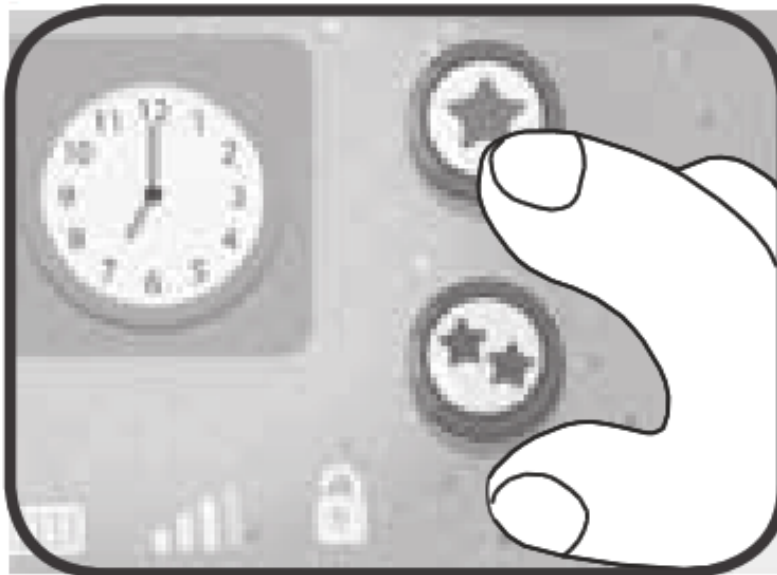


The **LED Button** should always face the player.

3. Activity Pages

Tap anywhere on the page to play and learn.

- Tap on the single star image to enter the Find-It game, where the player is asked to find objects on the Activity Pages. Each tap of the single star triggers three questions.



- Tap on the double star image to enter the Advanced Find-It game, where the player is asked to find different objects on the Activity Pages or more challenging questions. Each tap of the double star triggers three questions

4. Story Pages

Tap anywhere on the page to interact with the story.

- Tap on the single star to enter the Find-It game, where the player is asked to find objects on the Story Pages. Each tap of the single star triggers three questions.



- Tap on the book image to hear the entire story

5. **LED Button**

Press to play a unique tune for every set of Activity and Story

Pages.

- Tune 1: Emotions – Cooper
- Tune 2: Counting – Buddy
- Tune 3: Flowers – Bella
- Tune 4: Shapes – Jake
- Tune 5: Animals – Pepper
- Tune 6: Opposites – Mona

The **LED Button** feature is not active while playing the Find-It game.

6. **Automatic Shut-Off**

To preserve battery life, the **2-in-1 Touch & Learn Tablet™** will automatically go into sleep mode after approximately 45 seconds without input. To turn the unit on again, turn a page, press the **LED button**, or use the **Control Handle** to change modes.

CARE & MAINTENANCE

1. Keep the unit clean by wiping it with a slightly damp cloth.
2. Keep the unit out of direct sunlight and away from any direct heat sources.
3. Remove the batteries if the unit will not be in use for an extended period of time.
4. Do not drop the unit on a hard surface and do not expose the unit to moisture or water.

TROUBLESHOOTING

If for some reason the program/activity stops working, please follow these steps:

1. Turn the unit Off.
2. Interrupt the power supply by removing the batteries.
3. Let the unit stand for a few minutes, then replace the batteries.

4. Turn the unit back On. The unit should now be ready to use again.
5. If the unit still does not work, install a new set of batteries.

Environmental Phenomena

The unit may malfunction if subjected to radio-frequency interference. It should revert to normal operation when the interference stops. If not, it may become necessary to turn the power Off and back On or remove and reinstall the batteries. In the unlikely event of an electrostatic discharge, the unit may malfunction and lose memory, requiring the user to reset the device by removing and reinstalling the batteries.

IMPORTANT NOTE:

If the problem persists, please call our **Consumer Services Department at 1-800-701-5327** in the U.S. or email support@leapfrog.com. Creating and developing LeapFrog® products is accompanied by a responsibility that we take very seriously. We make every effort to ensure the accuracy of the information, which forms the value of our products. However, errors sometimes can occur. It is important for you to know that we stand behind our products and encourage you to contact us with any problems and/or suggestions you might have. A service representative will be happy to help you.

NOTE

This equipment has been tested and found to comply with the limits for a Class B digital device, pursuant to Part 15 of the FCC Rules. These limits are designed to provide reasonable protection against harmful interference in a residential installation. This equipment generates, uses, and can radiate radio frequency energy and, if not installed and used in accordance with the instructions, may cause harmful interference to radio communications. However, there is no guarantee that interference will not occur in a particular installation. If this equipment does cause harmful interference to radio or television reception, which can be determined by turning the equipment off and on, the user is encouraged to try to correct the interference by one or more of the following measures:

- Reorient or relocate the receiving antenna.
- Increase the separation between the equipment and receiver.
- Connect the equipment into an outlet on a circuit different from that to which the receiver is connected.
- Consult the dealer or an experienced radio/TV technician for help.

Supplier's Declaration of Conformity 47 CFR § 2.1077 Compliance Information

Trade Name:	LeapFrog®
Model:	6112
Product Name:	2-in-1 Touch & Learn Tablet™
Responsible Party:	LeapFrog Enterprises, Inc.
Address:	6401 Hollis Street, Suite 100, Emeryville, CA
Emery Website:	leapfrog.com

THIS DEVICE COMPLIES WITH PART 15 OF THE FCC RULES. OPERATION IS SUBJECT TO THE FOLLOWING TWO

CONDITIONS: (1) THIS DEVICE MAY NOT CAUSE HARMFUL INTERFERENCE, AND (2) THIS DEVICE MUST ACCEPT ANY INTERFERENCE RECEIVED, INCLUDING INTERFERENCE THAT MAY CAUSE UNDESIRABLE OPERATION. **CAN ICES-3 (B)/NMB-3(B)**

CAUTION

Changes or modifications not expressly approved by the party responsible for compliance could void the user's authority to operate the equipment.




Visit our website for more information about our products, downloads, resources, and more.

leapfrog.com

Read our complete warranty policy online at leapfrog.com/warranty

LeapFrog Enterprises, Inc.,
A subsidiary of VTech Holdings Limited.
TM & © 2020 LeapFrog Enterprises, Inc.
All rights reserved.
91-003838-000 US

Documents / Resources

 <p>2-in-1 Touch & Learn Tablet</p> <p>Fareast's Guide</p>	<p>LeapFrog 80-194850 2-in-1 Touch and Learn Table [pdf] User Guide 80-194850, 2-in-1 Touch and Learn Table</p>
---	---

[Manuals+](#)