



# LEADJOY P5-ADAPTER Keyboard Mouse Converter Instructions

[Home](#) » [LEADJOY](#) » LEADJOY P5-ADAPTER Keyboard Mouse Converter Instructions 



## Contents

- [1 P5-ADAPTER Keyboard Mouse Converter](#)
- [2 PACKAGE CONTENTS](#)
- [3 REQUIREMENTS](#)
- [4 DEVICES LAYOUT](#)
- [5 INDICATOR STATUS](#)
- [6 CONNECTION TUTORIAL](#)
- [7 FIREWARE UPGRADE](#)
- [8 FAQ](#)
- [9 Documents / Resources](#)
  - [9.1 References](#)

## P5-ADAPTER Keyboard Mouse Converter

[E-manuals]

<https://www.leadjoy.top/pages/p5-adapter-tutorial>



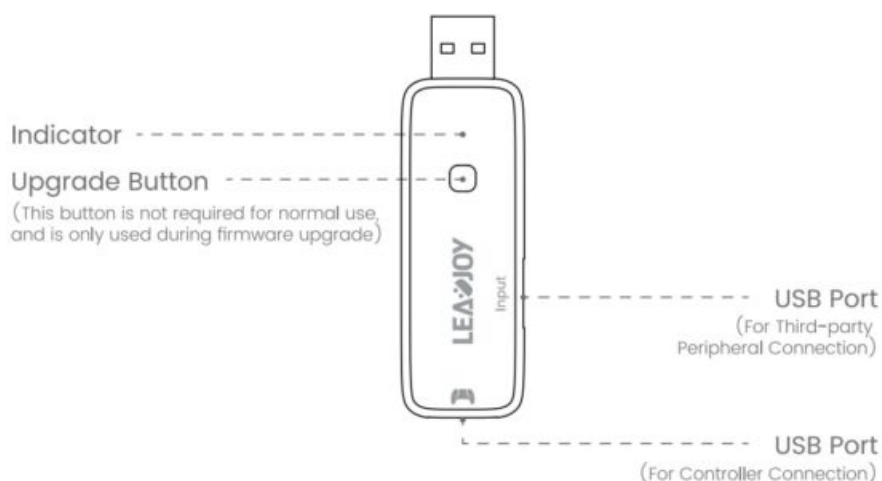
## PACKAGE CONTENTS

P5 Adapter \*1  
User Manual \*1  
Certification \*1

## REQUIREMENTS

- PS5 console
- PS5 original controller

## DEVICEE LAYOUT



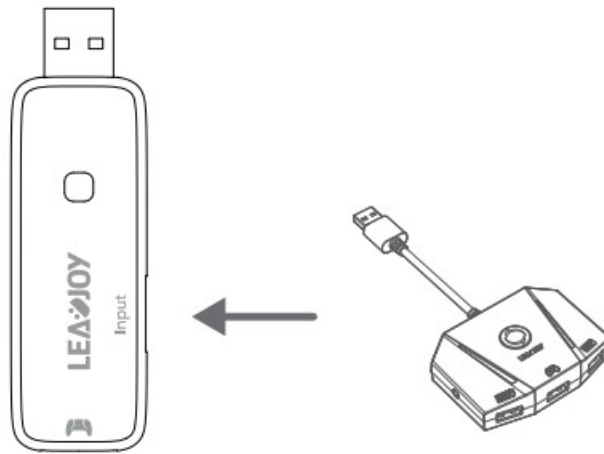
## INDICATOR STATUS

INDICATOR	DESCRIPTION
Extinguished	Not being connected to PS5 or successfully booting PS5
Flash Rapidly (Twice a Second)	Boot failure, unstable status
Solid	In upgrade mode

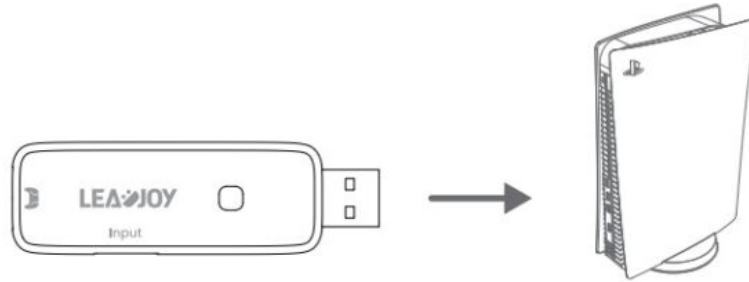
## CONNECTION TURTORIAL



1. Insert the original PS5 controller into the bottom USB port of the P5 Adapter
2. Insert the third-party USB peripheral into the side USB port of the P5 Adapter (Supported peripherals include but are not limited to: Leadjoy-VX2 Box, GameSir-VX2 AimSwitch, Xbox Controller, NS Pro Controller, GameSir-Cyclone)



3. Insert the P5 Adapter into the USB port of the PS5 console



4. Press the HOME button on the original controller



5. Test whether this PS5 controller is functioning properly. After confirming the controller is working, proceed to operate third-party USB peripherals.

## FIREWARE UPGRADE

Download the upgrade program from our official website <https://www.leadjoy.top/pages/p5-adapter-tutorial> for subsequent firmware updates of the product.



## FAQ

**Q:** After inserting the original PS5 controller into the P5 Adapter, the indicator light on the P5 Adapter is not consistently on, but peripheral still cannot be used?

**A:** It is possible that the steps were incorrect. Please try again carefully following the instructions in the manual and reattempt the operation. If the issue persists, try inserting the P5 Adapter into another USB port on the PS5 console.

Q: What does it mean when the indicator on the P5 Adapter is continuously flashing?

A: The P5 Adapter is currently in an unstable boot state, and continuous usage may result in disconnection. It is recommended to unplug and reinsert the P5 Adapter.

Q: One peripheral can be used, but the other peripheral cannot be used?

A: We apologize for any inconvenience. We cannot guarantee compatibility with all third-party peripherals on the market. We are continuously optimizing to cover as many models as possible. It is recommended to use the devices we recommend, including but not limited to: Leadjoy-VX2Box, GameSir-VX2 Aim Switch, Xbox Controller, NS Pro Controller, Game Sir-Cyclone, etc.

Q: My PS5 controller cannot wirelessly connect to the PS5 console anymore?

A: During usage, the P5 Adapter occupies the wireless connection channel of the PS5 controller. If you need to use the PS5 wireless connection, it is recommended to unplug the P5 Adapter, as it may otherwise affect the normal functionality of the controller.

Q: After the PS5 console enters standby or restarts shuts down, the controller cannot be controlled?

A: You can try resolving this issue by unplugging and reinserting the P5 Adapter multiple times, with intervals of around 10 seconds.



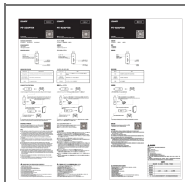
#### **PLEASE READ THIS PRECAUTIONS CAREFULLY**

- CONTAINS SMALL PARTS. Keep out of reach of children under the age of 3. Seek immediate medical attention if swallowed or inhaled.
- DO NOT use the product near fire.
- DO NOT expose to direct sunlight or high temperatures.
- DO NOT leave the product in a humid or dusty environment.
- DO NOT hit or drop the product.
- DO NOT touch USB port directly or it might cause malfunctions.
- DO NOT strongly bend or pull cable parts. Use a soft, dry cloth while cleaning.

- DO NOT use chemicals such as gasoline or thinner.
- DO NOT disassemble, repair or modify.
- DO NOT use for purposes other than its original purpose. We are NOT responsible for accidents or damage when used for non-original purposes.
- DO NOT look directly at the optical light. It might damage your eyes.
- If you have any quality concerns or suggestions, please contact Lead Joy or your local distributor.



## Documents / Resources



[LEADJOY P5-ADAPTER Keyboard Mouse Converter](#) [pdf] Instructions  
P5-ADAPTER Keyboard Mouse Converter, P5-ADAPTER, Keyboard Mouse Converter, Mouse Converter, Converter

## References

- [User Manual](#)

### Manuals+, Privacy Policy

This website is an independent publication and is neither affiliated with nor endorsed by any of the trademark owners. The "Bluetooth®" word mark and logos are registered trademarks owned by Bluetooth SIG, Inc. The "Wi-Fi®" word mark and logos are registered trademarks owned by the Wi-Fi Alliance. Any use of these marks on this website does not imply any affiliation with or endorsement.