

  
LDsystems QTP 5 5 Inch  
Questa Touchscreen  
Display



# LDsystems QTP 5 5 Inch Questa Touchscreen Display User Manual

[Home](#) » [LDSystems](#) » LDsystems QTP 5 5 Inch Questa Touchscreen Display User Manual 

## Contents

- 1 [LDsystems QTP 5 5 Inch Questa Touchscreen Display](#)
- 2 [Product Usage Instructions](#)
- 3 [SAFETY INSTRUCTIONS](#)
- 4 [PACKAGING CONTENT](#)
- 5 [CONNECTIONS, OPERATING AND DISPLAY ELEMENTS](#)
- 6 [INSTALLATION](#)
- 7 [IP CONFIGURATION](#)
- 8 [TECHNICAL DATA](#)
- 9 [DISPOSAL](#)
- 10 [Documents / Resources](#)
  - 10.1 [References](#)
- 11 [Related Posts](#)



**LDsystems QTP 5 5 Inch Questa Touchscreen Display**



## Specifications

- Model: QTP 5
- Display: 5-inch Touchscreen
- Operating System: Android 11
- Power Supply: PoE (Power over Ethernet)

## Product Usage Instructions

### Intended Use

Ensure the following safety instructions and guidelines are followed for the optimal usage of the LD QTP 5 touch panel:

- Read the safety instructions and manual carefully before use.
- Keep the operating instructions within reach at all times.
- Observe the warnings on the unit and in the manual.
- Use the product only as prescribed.

### Safety Instructions

For safe operation of the device, please adhere to the following safety instructions:

- Read all instructions carefully.
- Keep all information and instructions in a safe place.
- Use the accessory as intended.
- Avoid opening or modifying the product.
- Avoid choking hazards by keeping small parts and packaging materials away from children.
- Avoid high volume audio exposure to prevent hearing damage.
- Indoor use only: The device is designed for indoor use.

### Product Setup

The packaging content includes the following items:

- 1 x LD QTP 5 touch panel
- 1 x Mounting plate with locking screw (pre-assembled)

- User's manual

## FAQ

### What is the intended use of the LD QTP 5?

The LD QTP 5 touch panel is designed for professional use with a focus on high-quality audio products.

## YOU MADE THE RIGHT CHOICE!

This device was developed and manufactured under high quality requirements to ensure many years of trouble-free operation. This is what LD Systems stands for with its name and many years of experience as a manufacturer of high-quality audio products. Please read these operating instructions carefully so that you can quickly and optimally use your new LD Systems product.

You can find more information about LD Systems on our website [WWW.LD-SYSTEMS.COM](http://WWW.LD-SYSTEMS.COM)

## ABOUT THIS MANUAL

- Read the safety instructions and the entire manual carefully before commissioning.
- Observe the warnings on the unit and in the operating instructions.
- Always keep the operating instructions within reach.
- If you sell or pass on the appliance, be sure to hand over these operating instructions as well, as they are an essential part of the product.

## INTENDED USE

The product is a device for professional audio installation! The product has been developed for professional use in the field of audio installation and is not intended for use in households! Furthermore, this product is intended for installation by qualified persons with specialist knowledge and for operation by instructed persons! The use of the product outside the specified technical data and operating conditions is considered as not intended! Liability for damages and third party damages to persons and property due to non-intended use is excluded!

### The product is not suitable for

- Persons (including children) with limited physical, sensory or mental capabilities or lack of experience and knowledge.
- Children (children must be instructed not to play with the device).

## SAFETY INSTRUCTIONS

### HAZARD

1. Please read these instructions carefully.
2. Keep all information and instructions in a safe place.
3. Follow the instructions.
4. Use the accessory in the prescribed manner only.
5. Do not open or modify the product.

**CHOKING HAZARD! KEEP AWAY FROM CHILDREN! THE PRODUCT CONTAINS SMALL PARTS THAT CAN BE SWALLOWED AND PACKAGING MATERIAL THAT CAN BE SWALLOWED! PLASTIC BAGS MUST BE KEPT OUT OF REACH OF CHILDREN!**

**CAUTION: HIGH VOLUME AUDIO PRODUCTS!**

This touch panel and associated products are intended for professional use. The commercial operation is subject

to the applicable national regulations and guidelines for accident prevention. Hearing damage due to high volume and continuous exposure:

The use of this touch panel and related products may generate high sound pressure levels (SPL) that may cause hearing damage. Avoid exposure to high volumes!

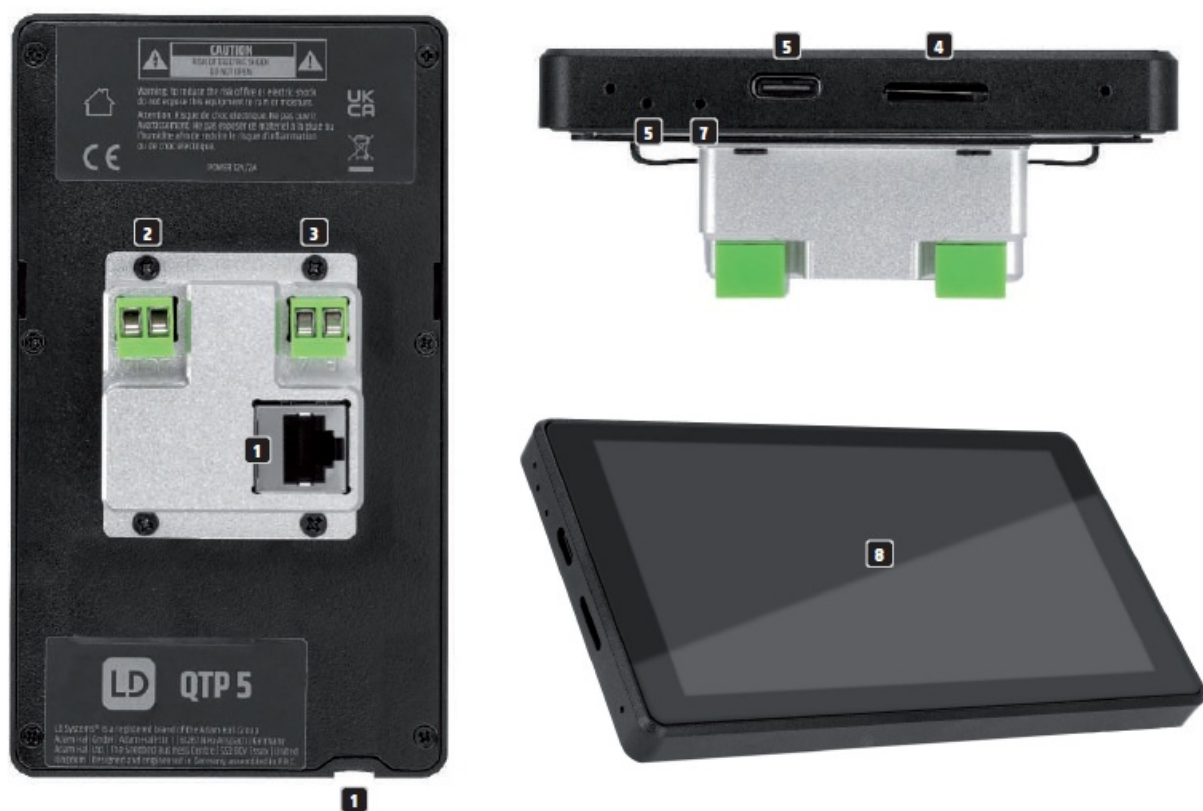
### FOR INDOOR USE ONLY

This symbol indicates electrical equipment designed primarily for indoor use

### PACKAGING CONTENT

- 1 x LD QTP 5 touch panel
- 1 x Mounting plate with locking screw (pre-assembled)
- User's manual

### CONNECTIONS, OPERATING AND DISPLAY ELEMENTS



#### 1. ETHERNET CONNECTION

Ethernet connection for the data connection and power supply via PoE (Power over Ethernet).

#### 2. POWER IN

Alternative power supply via an optionally available power supply unit (12V / 2A DC voltage, ensure correct polarity, see labelling).

#### 3. SERIAL INTERFACE RS485

Currently without function.

#### 4. TF-CARD

Slot for a TF card or MicroSD card.

#### 5. TYPE-C

USB-C port for data connection with a computer.

#### 6. RESTART

Use a paper clip, for example, to force a restart of the unit.

## 7. SET

For service purposes only.

## 8. DISPLAY

5.5 inch touch display.

## 9. THREAD

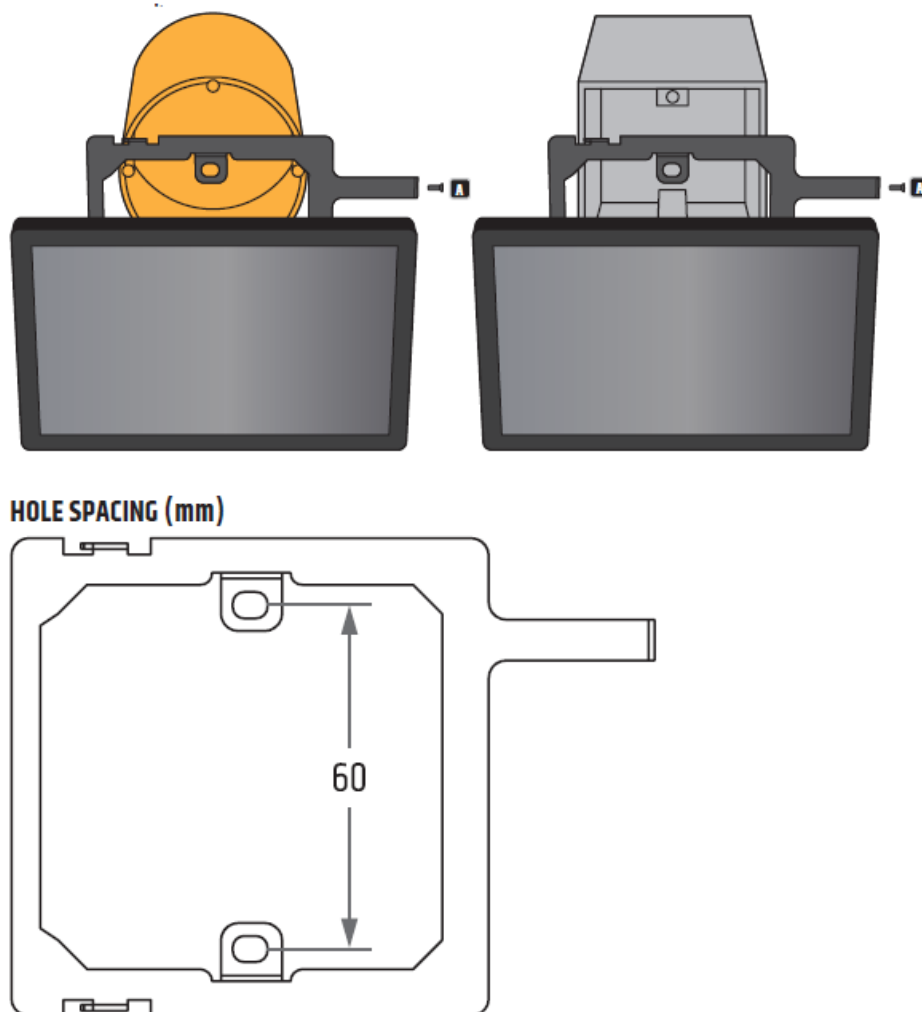
Thread for fastening the mounting plate (mounting plate and locking screw included).

# INSTALLATION

Make sure the flush-mounted box is deep enough (connection terminal plus Ethernet plug).

**RECOMMENDATION:** Mount the touch panel in landscape format with the locking screw A pointing to the right on a suitable location on a wall. The mounting plate of the QTP5 touch panel is compatible with EU type and type 86 flush-mounted boxes. Installation of the touch panel only by authorised specialist personnel and electricians. No liability is assumed for the mounted flush-mounted box and its function. Inspection by qualified personnel is required.

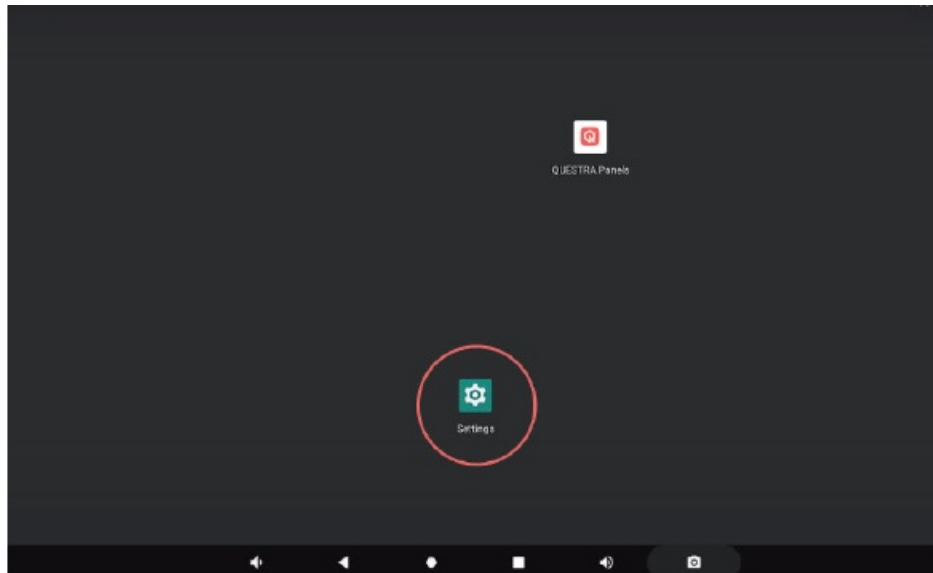
Loosen the locking screw A from the mounting plate, remove the mounting plate from the touch panel and fix it to the corresponding flush-mounted box. Now make the cable connections with the touch panel. Place the touch panel on the mounting plate so that the two hooks on the left side of the mounting plate engage in the corresponding recesses in the touch panel and secure the connection with the previously loosened locking screw.



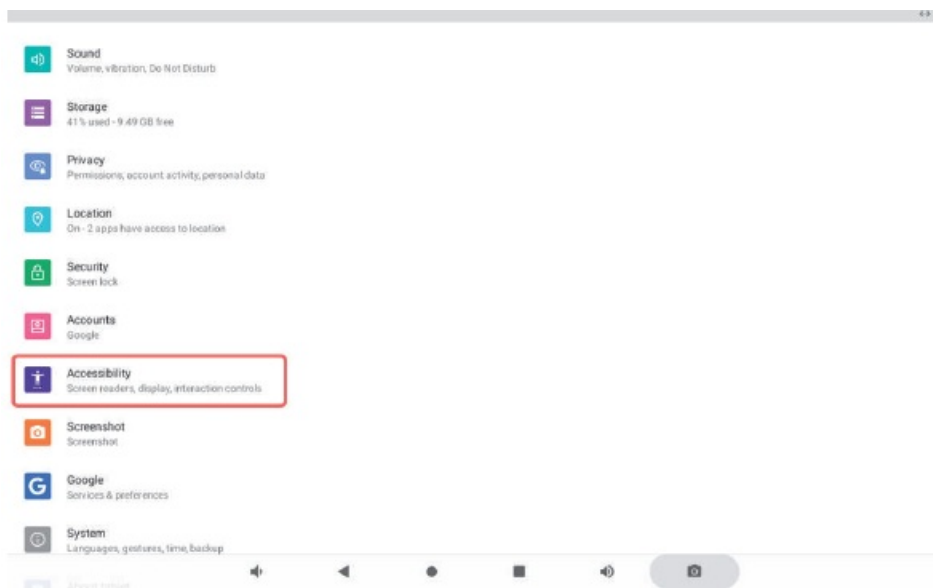
## AUTOSTART

As the system language of the touch panel is English ex works, the following screenshots are also in English. The system language can be set.

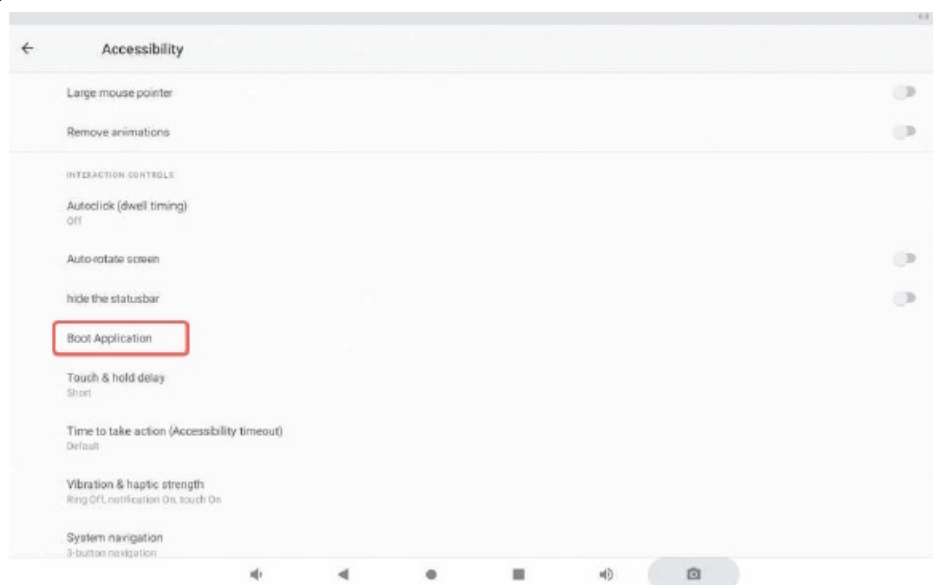
1. Open the system settings „Settings“.



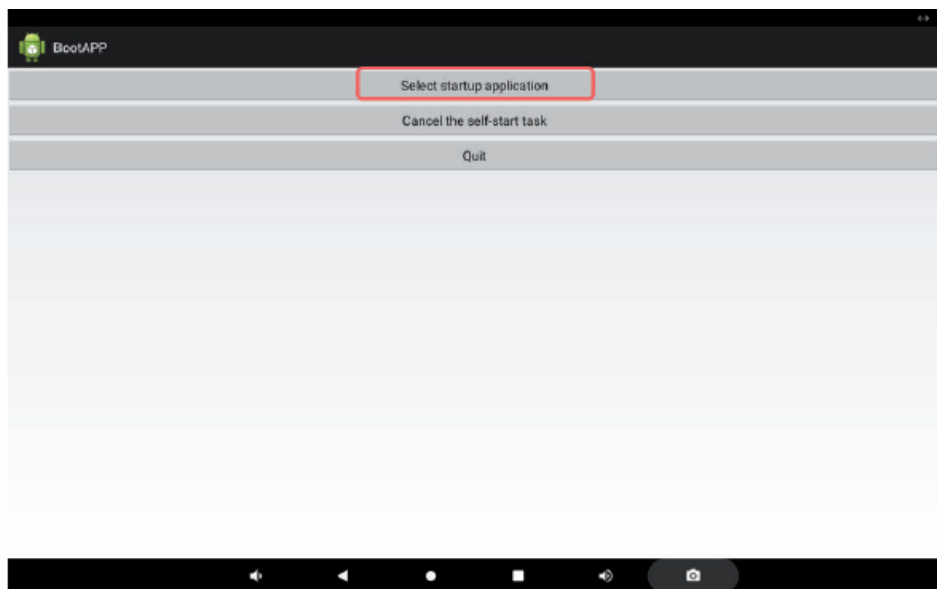
2. Open „Accessibility“.



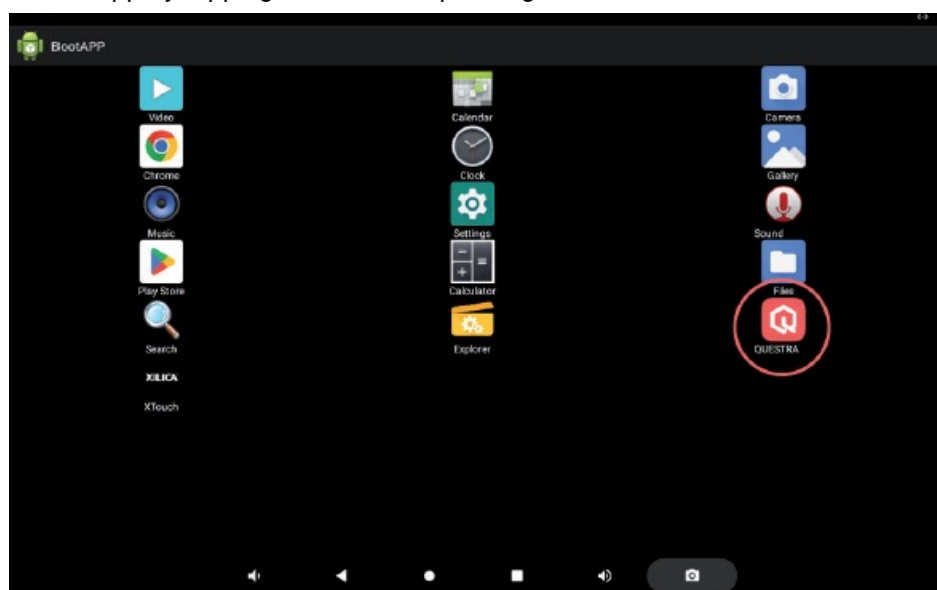
3. Open „Boot Application“.



4. Tap on „Select startup application“.



5. Now select the desired app by tapping on the corresponding icon.



6. As confirmation, „Successfully set!“ now appears at the bottom of the screen.



## IP CONFIGURATION

The automatic network configuration via DHCP is activated in the delivery state. To configure the network manually, go to the settings and change the „Ethernet IP mode“ to „static“ (Settings -> Network & Internet ->

Ethernet -> Ethernet IP Mode -> static -> Configure IP etc.) . Restart the unit after changing the status.

## TECHNICAL DATA

Article number	LDQTP5
Product type	Installation equipment
Type	5" QUESTRA touch panel, PoE powered
Processor	RK3566 – Quad-core up to 1.8 GHZ
Working memory	2 GB
Internal memory	16 GB
Operating controls	5.5" touch display, set, restart
Display resolution	1280 x 720 Pixel
Display brightness	300 nits
Touch Panel Type	5-points capacitive IPS touch panel
Mounting position	Landscape or portrait format (landscape format recommended)
Operating system	Android 11
Connections	Ethernet RJ45, Power In, RS485 (currently without function), USB-C
Card reader	TF Card / MicroSD
Network	2.4G WIFI, BT 4.0, 10M/100M Ethernet
Power supply	PoE+ (Power over Ethernet), IEEE 802.3at compliant, external power supply 12 V DC 2 A (optionally available)
Mounting options	EU flush-mounted box, 86-type Electrical Box
Dimensions (W x H x D)	145.7 mm x 84 mm x 38 mm
Weight	0.32 kg
Ambient temperature	0 – 40°C
Relative air humidity	<80%, non-condensing
Accessories (optional)	Power supply
Accessories included	Mounting plate plus locking screw

## DISPOSAL

### PACKAGING

1. Packaging can be disposed of via the usual waste disposal channels.
2. Please separate the packaging according to the waste disposal and materials regulations in your country.



#### DEVICE:

1. This device is subject to the European Directive on Waste Electrical and Electronic Equipment in its applicable version.  
WEEE Directive-Waste Electrical and Electronical Equipment. Old devices and batteries do not belong in household waste.  
The old device or batteries must be disposed of via an approved waste disposal service or a municipal waste disposal facility. Follow the directives in your country!
2. Follow the disposal laws in your country.
3. As a private customer, you can obtain information on environmentally friendly disposal options from the retailer from whom you purchased the product or from the relevant regional authorities.



## MANUFACTURER'S DECLARATIONS

### MANUFACTURER'S WARRANTY & LIMITATIONS OF LIABILITY

- Adam Hall GmbH, Adam-Hall-Str. 1, D-61267 Neu Anspach / E-mail [Info@adamhall.com](mailto:Info@adamhall.com) / +49 (0)6081 / 9419-0. Our current warranty conditions and limitation of liability can be found at:
- [https://cdn-shop.adamhall.com/media/pdf/MANUFACTURERS-DECLARATIONS\\_LD\\_SYSTEMS.pdf](https://cdn-shop.adamhall.com/media/pdf/MANUFACTURERS-DECLARATIONS_LD_SYSTEMS.pdf).
- Contact your distribution partner for service.

### UKCA-CONFORMITY

- Hereby, Adam Hall Ltd. declares that this product meets the following guidelines (where applicable): Electrical Equipment (Safety) Regulations 2016
- Electromagnetic Compatibility Regulations 2016 (SI 2016/1091)
- The Restriction of the Use of Certain Hazardous Substances in Electrical and Electronic Equipment Regulation 2012 (SI 2012/3032)
- Radio Equipment Regulations 2017 (SI 2016/2015)

### UKCA-DECLARATION OF CONFORMITY

- Products that are subject to Electrical Equipment(Safety)Regulation 2016, EMC Regulation 2016 or
- RoHS Regulation can be requested at [info@adamhall.com](mailto:info@adamhall.com)
- Products that are subject to the Radio Equipments Regulations 2017
- (SI2017/1206) can be downloaded from [www.adamhall.com/compliance/](http://www.adamhall.com/compliance/)



### CE CONFORMITY

- Adam Hall GmbH hereby confirm that this product meets the following guidelines (where applicable): R&TTE (1999/5/EC) or RED (2014/53/EU) as of June 2017.
- Low Voltage Directive (2014/35/EU)
- EMC Directive (2014/30/EU)
- RoHS (2011/65/EU)
- The complete Declaration of Conformity can be found at [www.adamhall.com](http://www.adamhall.com)
- Furthermore, you can also request it at [info@adamhall.com](mailto:info@adamhall.com)

### CE DECLARATION OF CONFORMITY

- Declarations of conformity for products subject to the LVD, EMC, RoHS Directive
- can be requested from [info@adamhall.com](mailto:info@adamhall.com)
- Declarations of conformity for products subject to RED Directive can be downloaded from [www.adamhall.com/compliance/](http://www.adamhall.com/compliance/).
- Subject to misprints and errors, as well as technical or other modifications!

## Documents / Resources

 The image shows the cover of the user manual for the LD Systems QTP 5. It features a black and white photograph of the 5-inch touchscreen display. Text on the cover includes 'LD SYSTEMS', 'QTP 5', and '5 INCH QUESTRA TOUCHSCREEN DISPLAY'. 	<p><a href="#">LDsystems QTP 5 5 Inch Questa Touchscreen Display</a> [pdf] User Manual</p> <p>QTP 5, QTP 5 5 Inch Questa Touchscreen Display, 5 Inch Questa Touchscreen Display, Questa Touchscreen Display, Touchscreen Display, Display</p>
-----------------------------------------------------------------------------------------------------------------------------------------------------------------------------------------------------------------------------------------------------------------------------------------------------------------------------------------------------------------------------------------------------------------------	-----------------------------------------------------------------------------------------------------------------------------------------------------------------------------------------------------------------------------------------------

## References

- [!\[\]\(31b03e46ee8a80a1f1467b8c03bd76e8\_img.jpg\) Eventtechnik Lösungen | Adam Hall Group](#)
- [!\[\]\(7d9665ff04f9d2270c38081c6215a724\_img.jpg\) LD Systems® | Your Sound. Our Mission.](#)
- [!\[\]\(7cea648fec4dfc1e99934873e9173b69\_img.jpg\) Eventtechnik Lösungen | Adam Hall Group](#)
- [!\[\]\(48ceb66414885cacc3f139b4fa359213\_img.jpg\) Downloads | Service | Adam Hall Shop](#)
- [!\[\]\(01a1fc700f38e6e09ee62e6a9c54d804\_img.jpg\) LD Systems® | Your Sound. Our Mission.](#)
- [User Manual](#)

[Manuals+](#), [Privacy Policy](#)

This website is an independent publication and is neither affiliated with nor endorsed by any of the trademark owners. The "Bluetooth®" word mark and logos are registered trademarks owned by Bluetooth SIG, Inc. The "Wi-Fi®" word mark and logos are registered trademarks owned by the Wi-Fi Alliance. Any use of these marks on this website does not imply any affiliation with or endorsement.