



LD SYSTEMS XECI Ethernet Control Interface Card User Manual

[Home](#) » [LD Systems](#) » LD SYSTEMS XECI Ethernet Control Interface Card User Manual 

Contents

- [1 LD SYSTEMS XECI Ethernet Control Interface Card](#)
- [2 Product Information](#)
- [3 Usage Instructions](#)
- [4 Product Safety Instructions](#)
- [5 SAFETY INSTRUCTIONS](#)
- [6 SCOPE OF DELIVERY](#)
- [7 ASSEMBLY](#)
- [8 CONNECTIONS, CONTROLS, AND INDICATORS](#)
- [9 NETWORK CONNECTION](#)
- [10 TECHNICAL DATA](#)
- [11 DISPOSAL](#)
- [12 MANUFACTURER'S DECLARATIONS](#)
- [13 Documents / Resources](#)
 - [13.1 References](#)
- [14 Related Posts](#)



LD SYSTEMS XECI Ethernet Control Interface Card



Product Information

The XECI Ethernet Control Interface Card is an expansion module designed for use with LD IPA installation power amplifiers, providing an Ethernet interface for controlling the amplifier via the free QUESTRA software.

Usage Instructions

Intended Use

The XECI expansion module should only be installed by qualified personnel. Keep the product and its instructions in a safe place and follow all instructions carefully. Use accessories only as intended.

Product Safety Instructions

- Read instructions carefully before use
- Keep all information and instructions in a safe place
- Follow instructions carefully
- Use accessories only as intended
- Installation should only be carried out by qualified personnel
- Keep product and packaging materials away from children, as they contain small parts that may be swallowed

Scope of Delivery

The XECI expansion module comes with all the necessary screws and a cover for the expansion slot.

Assembly

1. Disconnect the power amplifier from the mains
2. Loosen and remove the four screws from the cover of the expansion slot using a suitable tool
3. Slide the expansion module into the expansion slot, ensuring that the contact strip of the module slides correctly into the connection strip of the power amplifier. The module can only be installed one way due to asymmetrically mounted guide pins on the module's plate
4. Screw the module to the power amplifier housing using the screws previously removed from the expansion slot

cover

Connections, Controls, and Indicators

- **ETHERNET:** Ethernet interface for controlling the installation amplifier via the free QUESTRA software
- **IP RESET:** Long press activates the IP reset procedure. Initially, the status LED flashes slowly in white and when the button is pressed for 5 seconds, the status LED flashes quickly to indicate that the IP reset procedure will be carried out after the button is released.

Expansion module with Ethernet control interface for LD IPA installation power amplifiers.

INTENDED USE

This item is a product-specific accessory that is only intended for use with the LD Systems IPA installation power amplifier. These assembly instructions do not replace the operating instructions for the associated product. Always read the relevant operating instructions first. This accessory does not affect the intended use of the associated product. Observe the safety instructions in the operating instructions for the associated product! The technical data shown in the operating instructions can change in connection with this accessory item.

SAFETY INSTRUCTIONS

1. Please read these instructions carefully.
2. Keep all information and instructions in a safe place.
3. Follow the instructions.
4. Only use the accessories in the manner intended.

CAUTION:

The installation of the expansion module may only be carried out by qualified personnel. If you are not qualified to do so, do not attempt to install the extension module yourself, but use the help of professional companies! Make sure that no foreign bodies get into the housing!

DANGER:

KEEP AWAY FROM CHILDREN! THE PRODUCT CONTAINS SMALL PARTS THAT CAN BE SWALLOWED AND PACKAGING MATERIAL THAT CAN BE SWALLOWED! PLASTIC BAGS MUST BE KEPT OUT OF REACH OF CHILDREN!

SCOPE OF DELIVERY

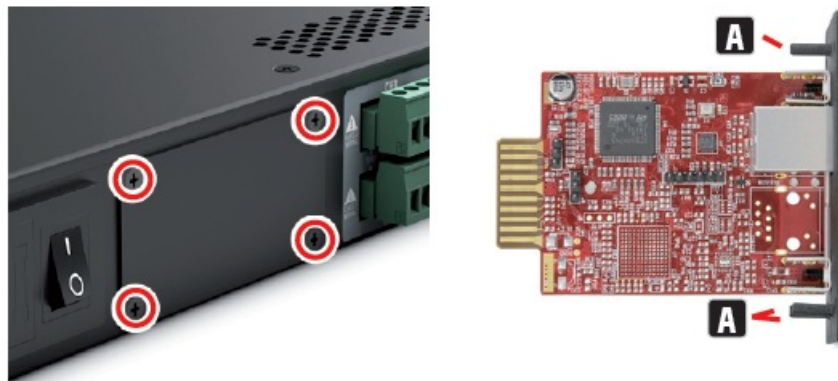
Remove the product from the packaging and remove all packaging material. Please check that the delivery is complete and intact and please notify your distributor immediately after purchase if the delivery is not complete or damaged. The scope of delivery of the product includes:

- 1x XECI extension module
- Assembly instructions

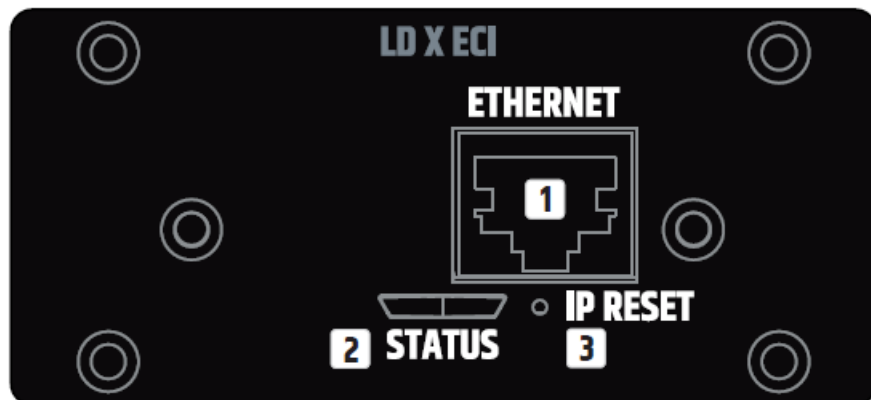
ASSEMBLY

1. Disconnect the power amplifier completely from the mains (pull out the mains plug)!
2. Loosen and remove the four screws from the cover of the expansion slot using a suitable tool (see markings in the illustration). Keep the cover for later conversion.

- Slide the expansion module into the expansion slot, making sure that the contact strip of the module slides correctly into the connection strip of the power amplifier. Asymmetrically mounted guide pins on the module's plate ensure that the module cannot be installed the wrong way round A.
- Now screw the module to the power amplifier housing using the screws previously loosened from the expansion slot cover.



CONNECTIONS, CONTROLS, AND INDICATORS



1. ETHERNET

Ethernet interface for controlling the installation amplifier via the free QUESTRA software.

2. STATUS

The status LED provides information about the internal integration between the card and the main board in the IPA power amplifier (firmware compatibility, internal communication problems):

- White flashing during start-up. The unit is loading the data for IPA.
- Permanently white: The network stack in the card is ready – The IP settings have been configured properly.
- Permanent red – Firmware is not compatible with the motherboard, problems with network stack.
- White flashing (slow/fast) during the IP reset procedure.

3. IP RESET

Long press activates the IP reset procedure. Initially, the status LED flashes slowly in white and when the button is pressed for 5 seconds, the status LED flashes quickly to indicate that the IP reset procedure will be carried out after the button is released.

NETWORK CONNECTION

LD Systems' XECI module enables remote control of compatible devices, such as IPA series amplifiers, over the network. Once the XECI module is built into a device, it can be connected to a network infrastructure and controlled via a computer running LD Systems QUESTRA software.

PREREQUISITES FOR OPERATION

- Computer with QUESTRA software installed
- Network interface (router, switch) with activated multicast traffic (activate IGMP protocol).
- Ethernet cable. Use a standard RJ45 Ethernet cable (Cat 5e or better) for all wired connections.

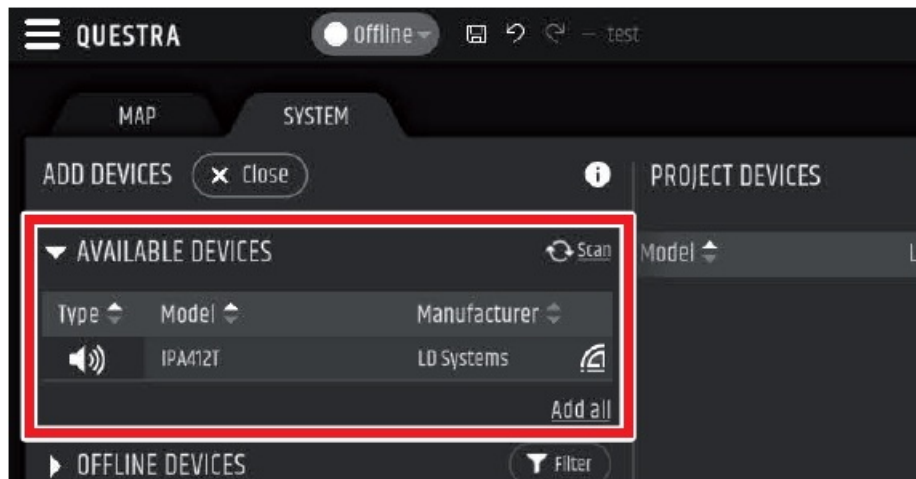


FIRST STEPS

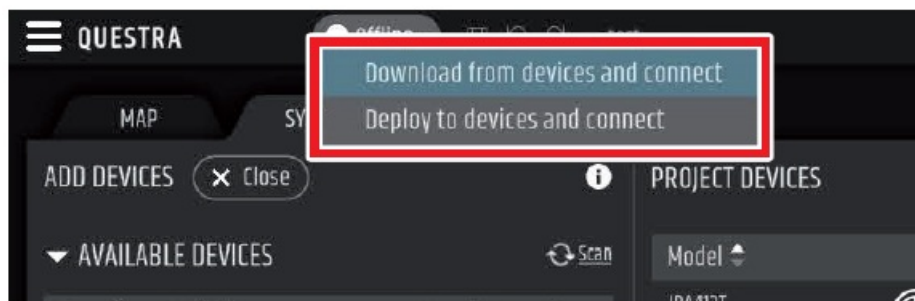
The XECI modules are delivered with a pre-configured static IP address (192.168.0.192) as standard. To be able to recognize the unit with the Quesra software, please make sure that the IP settings of the computer on which the Quesra software is installed are configured in the same network range as the XECI modules. See notes below.

- **IP range:** 192.168.0.X/24 (where X can be any value between 1 and 254, except 192 which is already used by default by the XECI modules)
- **Network mask:** 255.255.255.0

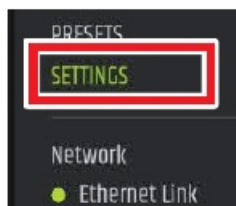
Once a device with a XECI module is connected to a network and switched on, it will appear under the AVAILABLE DEVICES section in the ADD DEVICES field on the left. Please note that multicast traffic must be enabled in the switch/router for the device to be detected.



Drag and drop the device into the PROJECT DEVICES area to be able to configure it. Then click the Offline button at the top of the screen and select Download from Devices and connect to the device.



Once the unit is online, click on the unit in the PROJECT DEVICES list and select the SETTINGS menu on the right to go directly to the settings menu and change the IP settings of the unit. For more details about the complete unit configuration with the QUESTRA software, please download the latest version from the LD Systems website (www.ld-systems.com) to your computer and read the user manual.



QUESTRA SOFTWARE

The Questra software not only enables comprehensive configuration of compatible devices, such as IPA Series amplifiers but also provides integration capabilities for third-party remote control units and allows users to create their own custom control panels that can be controlled via the Questra remote control apps available for iOS, Android, Windows and MAC OS. Please download the latest version of the QUESTRA software from the LD Systems website (www.ld-systems.com) to your computer, check the system requirements for the software, and follow the software instructions to start configuring a unit.

TECHNICAL DATA

Article number/LDXECI

- Product type Expansion Card to add Ethernet control
- Compatibility LD IPA installation power amplifiers
- Control element Button for IP reset
- Application software QUESTRA (free download)
- **Display elements RJ45 LEDs:** Link / Activity 2-color LED for internal connection status
- Dimensions (W × H × D) 82.5 × 36.5 × 76.3 mm
- Weight 50 g

Ethernet

- Interface RJ45
- Chip STM32H743
- Transmission protocol TCP/IP & UDP
- Ethernet Standard 10/100 Base-T
- Parallel connections 4
- Power consumption 1,075 W (Link Down), 1,375 W (Link Up)

Indications

- Rear Panel
 - **RJ45 LEDs:** Link/Activity
 - **Status LED:** internal connection status

Software Application

- QUESTRA® (free download)

DISPOSAL

PACKAGING:

1. Packaging can be disposed of via the usual waste disposal channels.
2. Please separate the packaging according to the waste disposal and materials regulations in your country.

DEVICE:

1. This device is subject to the European Directive on Waste Electrical and Electronic Equipment in its applicable version. WEEE Directive-Waste Electrical and Electronic Equipment. Old devices and batteries do not belong in household waste. The old device or batteries must be disposed of via an approved waste disposal service or a municipal waste disposal facility. Follow the directives in your country!
2. Follow the disposal laws in your country.
3. As a private customer, you can obtain information on environmentally friendly disposal options from the retailer from whom you purchased the product or from the relevant regional authorities.

MANUFACTURER'S DECLARATIONS

MANUFACTURER'S WARRANTY & LIMITATION OF LIABILITY

Adam Hall GmbH, Adam-Hall-Str. 1, 61267 Neu Anspach, Germany
E-mail Info@adamhall.com / +49 (0)6081 / 9419-0.

Our current warranty conditions and limitation of liability can be found at: https://cdn-shop.adamhall.com/media/pdf/MANUFACTURERS-DECLARATIONS_LD_SYSTEMS.pdf. Contact your distribution partner for service.

UKCA-CONFORMITY

Hereby, Adam Hall Ltd. declares that this product meets the following guidelines (where applicable) Electrical Equipment (Safety) Regulations 2016 Electromagnetic Compatibility Regulations 2016 (SI 2016/1091) The Restriction of the Use of Certain Hazardous Substances in Electrical and Electronic Equipment Regulation 2012 (SI 2012/3032) Radio Equipment Regulations 2017 (SI 2016/2015)

UKCA-DECLARATION OF CONFORMITY

Products that are subject to Electrical Equipment(Safety)Regulation 2016, EMC Regulation 2016 or RoHS Regulation can be requested at info@adamhall.com. Products that are subject to the Radio Equipments Regulations 2017 (SI2017/1206) can be downloaded from www.adamhall.com/compliance/.

CE CONFORMITY

Adam Hall GmbH hereby confirms that this product meets the following guidelines (where applicable):

Low-Voltage Directive (2014/35/EU)
EMC Directive (2014/30/EU)
RoHS (2011/65/EU)
RED (2014/53/EU)

CE DECLARATION OF CONFORMITY

- Declarations of conformity for products subject to the LVD, EMC, and RoHS Directive can be requested from info@adamhall.com.
- Declarations of conformity for products subject to RED can be downloaded from www.adamhall.com/compliance/.

Misprints and errors as well as technical or other changes are reserved!

Adam Hall GmbH | Adam-Hall-Str. 1 | 61267 Neu-Anspach | Germany Phone: +49 6081 9419-0 | adamhall.com.

Documents / Resources

 The image shows a black rectangular circuit board, the XECI Ethernet Control Interface Card, with various electronic components and connectors. It is shown in two views: a top-down perspective and a side profile. The top-down view shows a red Ethernet port and several gold-plated pins. The side profile shows the thickness of the board and the location of the components. LD SYSTEMS XECI Ethernet Control Interface Card [pdf] User Manual XECI Ethernet Control Interface Card, Ethernet Control Interface Card, Control Interface Card, Interface Card, Card	
--	--

References

-  [Eventtechnik Lösungen | Adam Hall Group](#)
-  [LD Systems® | Your Sound. Our Mission.](#)
-  [Downloads | Service | Adam Hall Shop](#)
-  [LD Systems® | Your Sound. Our Mission.](#)

Manuals+.