



LCI CommandIQ App User Guide

[Home](#) » [LCI](#) » LCI CommandIQ App User Guide 



Contents

- [1 Get started with the App](#)
- [2 Documents / Resources](#)
 - [2.1 References](#)
- [3 Related Posts](#)

Get started with the App

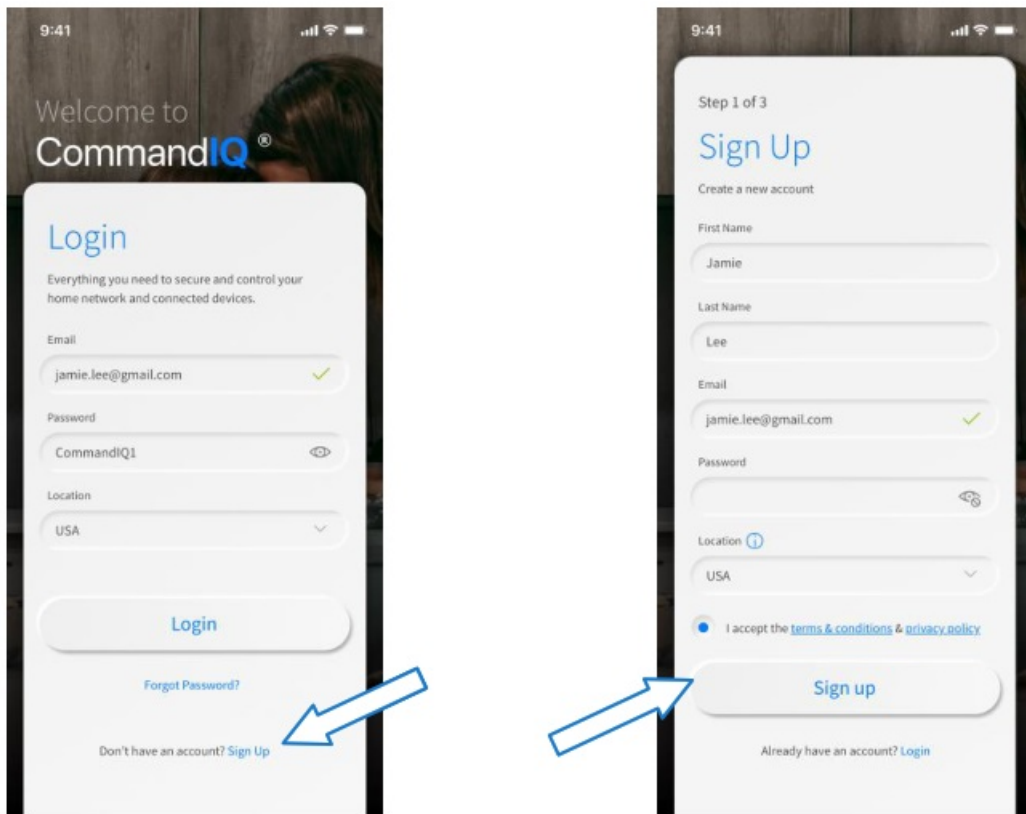
The app allows you to easily manage your home or small business Wi-Fi network within minutes. Download the app and take control of your Wi-Fi network today!

1. Download the app. You can search either the Apple App Store or Google Play Store for: `CommandIQ®`, then install it on your mobile device.





2. Tap “Sign Up” towards the bottom of the screen.

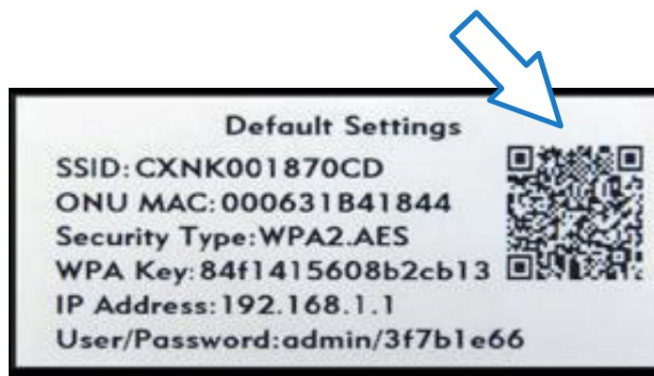


3. Enter your personal information. The password you enter here will be used to access the app.

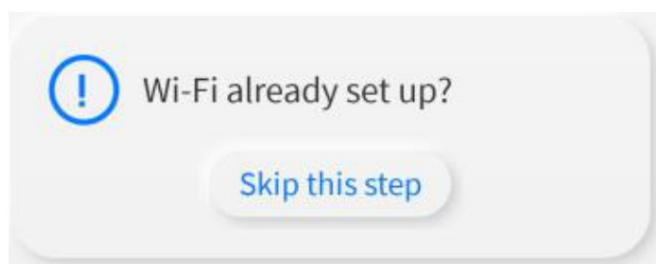
4. Select “I accept...” and tap “Sign up” to continue.

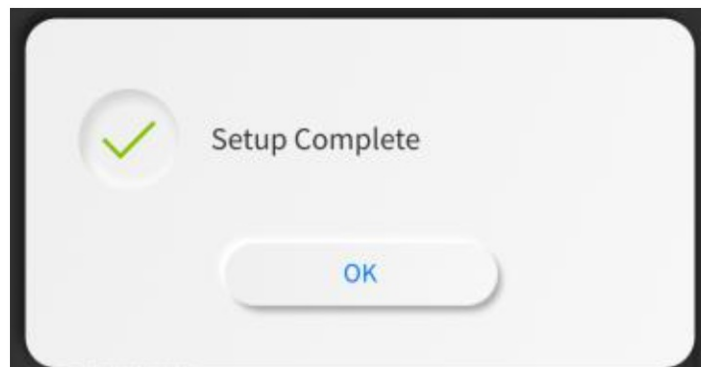
5. Scan the QR code using the app. (You may be asked to allow access to your camera.)

Point your camera at the QR Code found on the bottom of your GigaSpire router (example shown below).
Select OK.



6. Tap the “Skip this step” button since your default Wi-Fi is already set up done!





Tap “OK” and you’re done!

Need help? Contact us!

207-563-5018 (Tidewater)

207-763-5018 (Lincolnville Telephone)

207-785-5018 (LCI)

Email: support@tidewater.net

Documents / Resources



[LCI CommandIQ App](#) [pdf] User Guide
CommandIQ, App, CommandIQ App

References

- [LCIFiber.net - Fast Internet in Midcoast Maine! - LCIFiber.net - Bringing Maine to the Future!](#)
- [Lintelco.net - Fast Internet in Midcoast Maine! - Lintelco.net - Connecting Maine to the Future](#)
- [Tidewater.net - Fast Internet in Midcoast Maine!!! - Tidewater.net - Connecting Maine to the future!](#)

-  [App Store - Apple](#)

Manuals+.