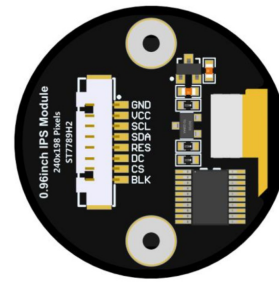


LCDWIKI MSP0962 IPS Module



## LCDWIKI MSP0962 IPS Module Instructions

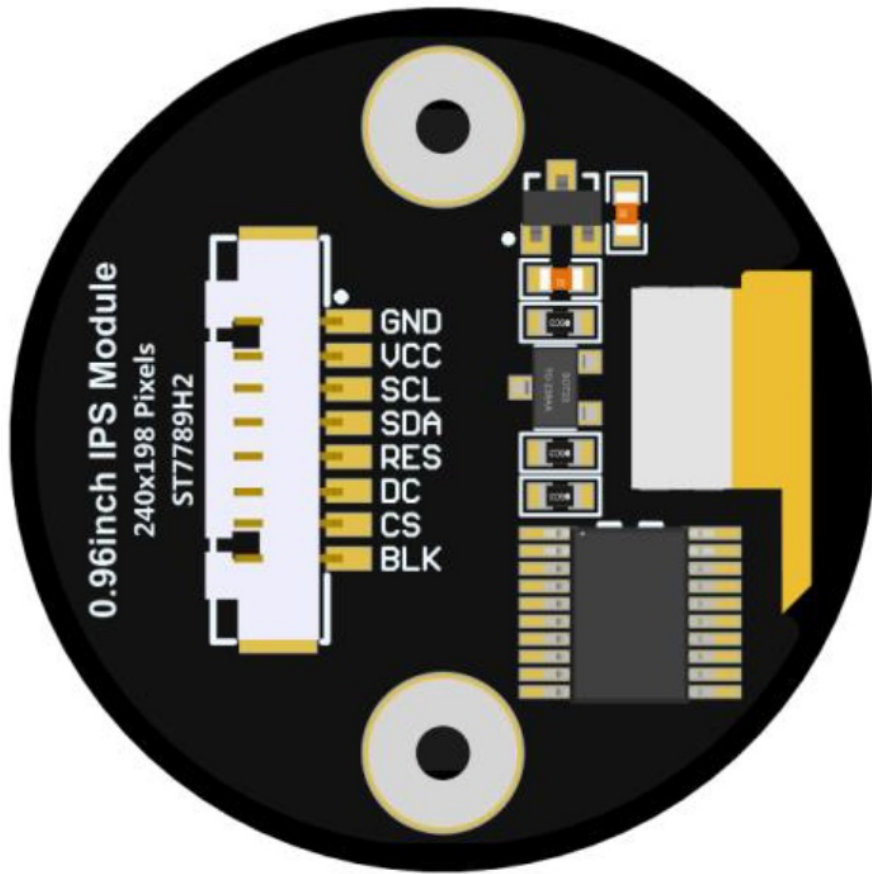
[Home](#) » [LCDWIKI](#) » LCDWIKI MSP0962 IPS Module Instructions 

### Contents

- [1 LCDWIKI MSP0962 IPS Module](#)
- [2 Product Information](#)
- [3 Introduction to Testing Platform](#)
- [4 Pin connection instructions](#)
- [5 Demo Function Description](#)
- [6 Demo Usage Instructions](#)
- [7 Documents / Resources](#)
  - [7.1 References](#)



**LCDWIKI MSP0962 IPS Module**



## Product Information

### Specifications

- **Development Board:** CH32F103C8T6 and CH32F203C8T6 Board
- **MCU:** CH32F103C8T6 / CH32F203C8T6
- **Frequency:** 72MHz (F103) / 144MHz (F203)

CH32F103/CH32F203 Number	Module Pins	Development Board Wiring Pins	Remarks
1	GND	GND	LCD Power Ground
2	VCC	5V/3.3V	LCD Power Positive (It is recommended to connect to 5V. When connected to 3.3V, the backlight brightness will be slightly dim)
3	SCL	PA5	LCD SPI Bus Clock Signal
4	SDA	PA7	LCD SPI Bus Write Data Signal
5	RES	PB8	LCD Reset Control Signal, Low Level Reset
6	DC	PB7	LCD Command / Data Selection Control Signal (High level: data, low level: command)
7	CS	PB9	LCD Selection Control Signal, Low Level Active
8	BLK	PB6	LCD Backlight Control Signal (If you need control, please connect the pins. If you don't need control, you can skip it)

## Demo Function Description

This set of sample programs includes two types of MCU programs, CH32F103C8T6 and CH32F203C8T6. Each MCU program also includes hardware SPI programs and software SPI programs, which are located in the Demo\_CH32 directory.

The sample program includes the following test items:

1. Main interface display
2. Menu interface display
3. Simple screen swiping
4. Drawing and filling of rectangles
5. Draw and fill a circle
6. Triangle drawing and filling
7. English display
8. Chinese display
9. Image display
10. Dynamic digital display
11. Rotating display

Example program display direction switching instructions: Found macro definition USE\_HORIZONTAL in LCD.h.

## Demo Usage Instructions

### Installing development tool software:

Firstly, you need to install the development tool software, which uses Keil5. Please refer to the online download and installation methods for yourself.

#### • Installing Device Library:

After installing the Keil5 software, it is necessary to install the CH32 device library (omitted if already installed).

The download addresses are as follows:

- CH32F103C8T6: [DownloadLink](#)
- CH32F203C8T6: [DownloadLink](#)

After downloading the official information package, unzip it and find the pack file in the EVTPUB directory. Double click on the pack file and follow the prompts to install.

### 1. Compiling Programs:

After the library installation is completed, open the PROJECT directory under the sample program, locate the uvprojx file, and double-click to open the sample project.

## FAQ

#### • Q: What is the recommended power supply voltage for the LCD module?

A: It is recommended to connect the VCC pin to 5V. When connected to 3.3V, the backlight brightness will be slightly dim.

#### • Q: How can I control the LCD backlight?

A: If you need to control the backlight, please connect the BLK pin. If you don't need control, you can skip it.

- **Q: Where can I download the CH32 device library?**

A: The CH32 device library can be downloaded from the following links:

- CH32F103C8T6: [DownloadLink](#)
- CH32F203C8T6: [DownloadLink](#)

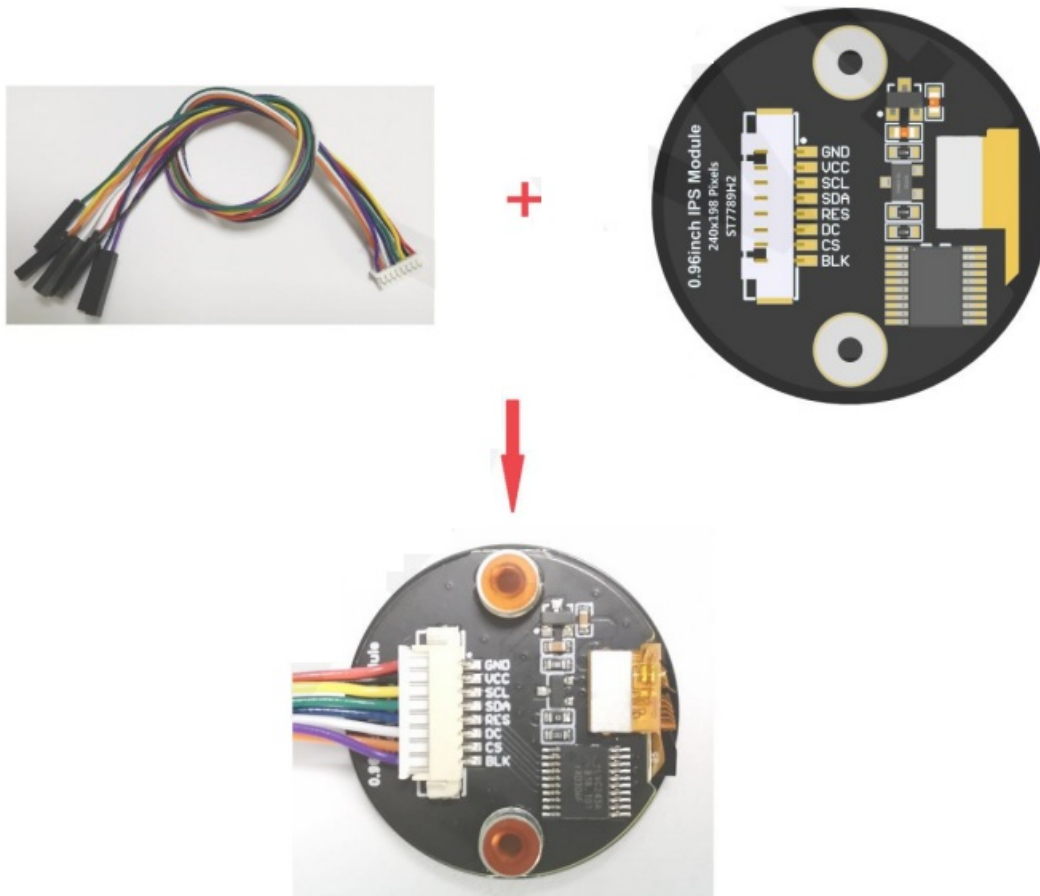
## Introduction to Testing Platform

Development Board : CH32F103C8T6 and CH32F203C8T6 Board

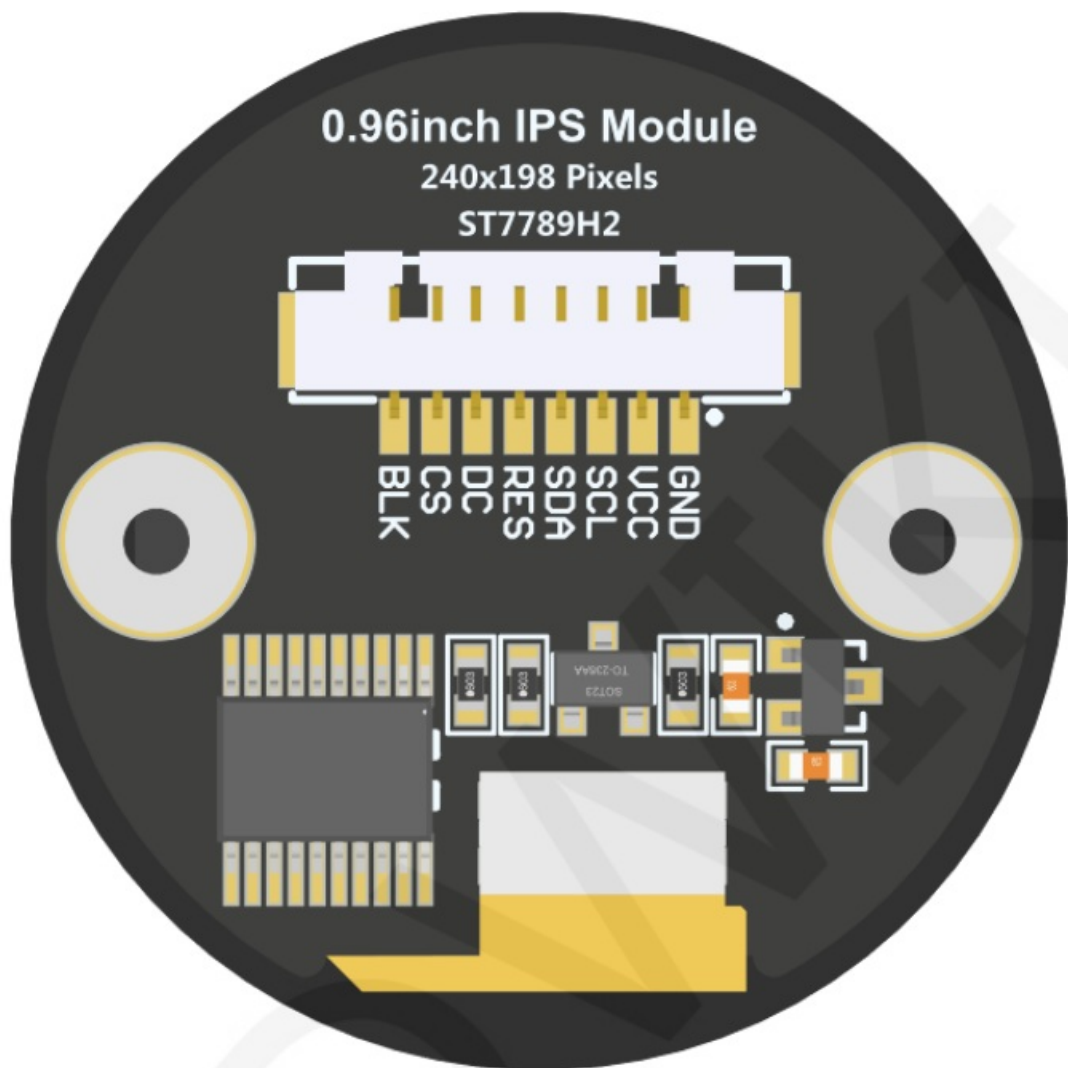
- **MCU:** CH32F103C8T6 \ CH32F203C8T6
- **Frequency:** 72MHz(F103) \ 144MHz(F203)

## Pin connection instructions

The display module is connected to the microcontroller using a 1.25mm spacing 8P DuPont cable with connectors. The module connection is shown in the following figure:



Picture1. Module wiring



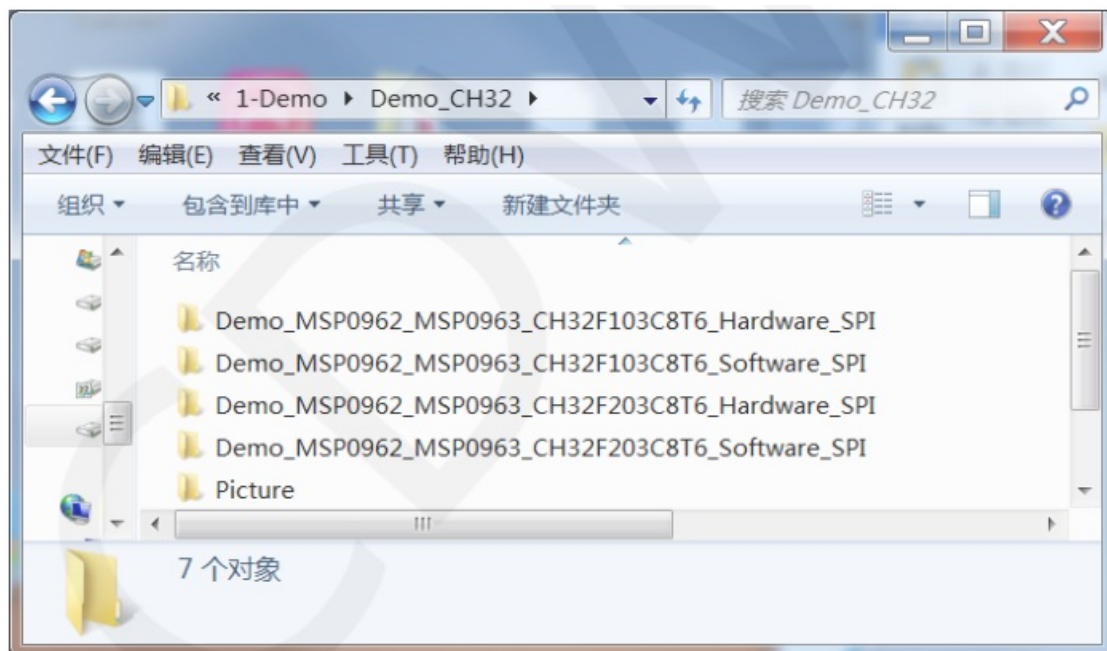
Picture2. Module Back Pin

CH32F103C8T6/CH32F203C8T6 Test Program Pin Direct Insertion			
Number	Module pins	Corresponding CH32F103/CH32F203 development board wiring pins	Remarks
1	GND	GND	LCD Power ground
2	VCC	5V/3.3V	LCD power positive(It is recommended to connect to 5V. When connected to 3.3V, the backlight brightness will be slightly dim)
3	SCL	PA5	LCD SPI bus clock signal
4	SDA	PA7	LCD SPI bus write data signal

5	RES	PB8	LCD reset control signal, Low level reset
6	DC	PB7	LCD command / data selection control signal High level: data, low level: command
7	CS	PB9	LCD selection control signal, Low level active
8	BLK	PB6	LCD backlight control signal (If you need control, please connect the pins. If you don't need control, you can skip it)

## Demo Function Description

This set of sample programs includes two types of MCU programs, CH32F103C8T6 and CH32F203C8T6. Each MCU program also includes hardware SPI programs and software SPI programs, which are located in the Demo\_CH32 directory, as shown in the following figure:



The sample program includes the following test items:

- **A.** Main interface display;
- **B.** Menu interface display;
- **C.** Simple screen swiping;
- **D.** Drawing and filling of rectangles;
- **E.** Draw and fill a circle;
- **F.** Triangle drawing and filling;
- **G.** English display;
- **H.** Chinese display;
- **I.** Image display;
- **J.** Dynamic digital display;
- **K.** Rotating display;

Example program display direction switching instructions:

Found macro definition USE\_HORIZONTAL in LCD. h, as shown in the following:



```
//////用户配置区//////
#define USE_HORIZONTAL 0 //定义液晶屏顺时针旋转方向 0-0度旋转, 1-90度旋转, 2-180度旋转, 3-270度旋转
```

USE\_HORIZONTAL 0 //0°rotate

USE\_HORIZONTAL 1 //90°rotate

USE\_HORIZONTAL 2 //180°rotate

USE\_HORIZONTAL 3 //270°rotate

## Demo Usage Instructions

### • Installing development tool software

Firstly, you need to install the development tool software, which uses Keil5. Please refer to the online download and installation methods for yourself.

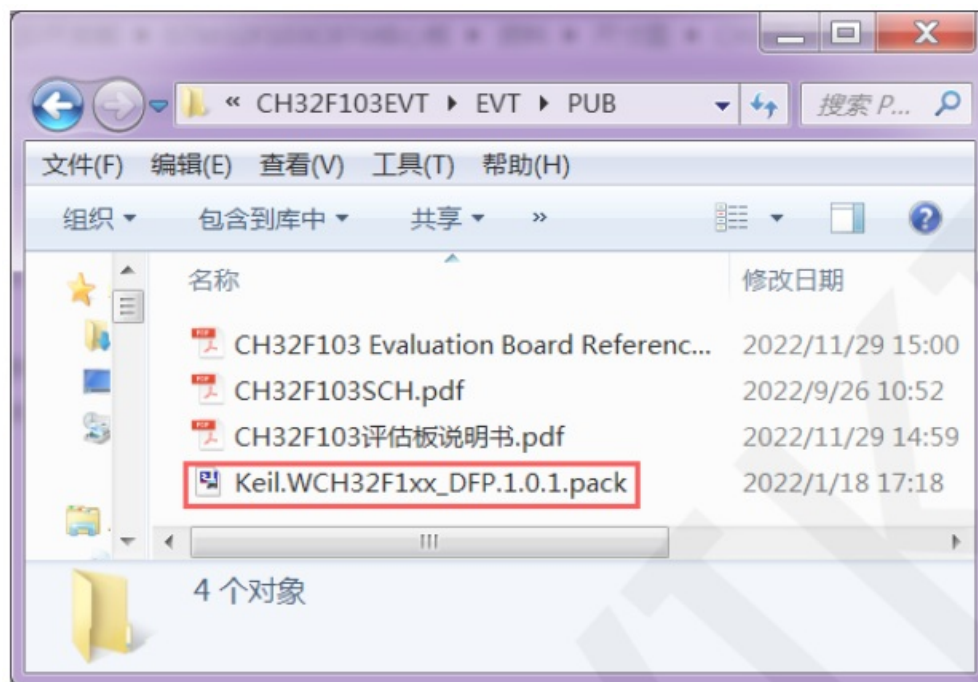
### • Installing Device Library

After installing the keil5 software, it is necessary to install the CH32 device library (omitted if already installed), and the download address is as follows:

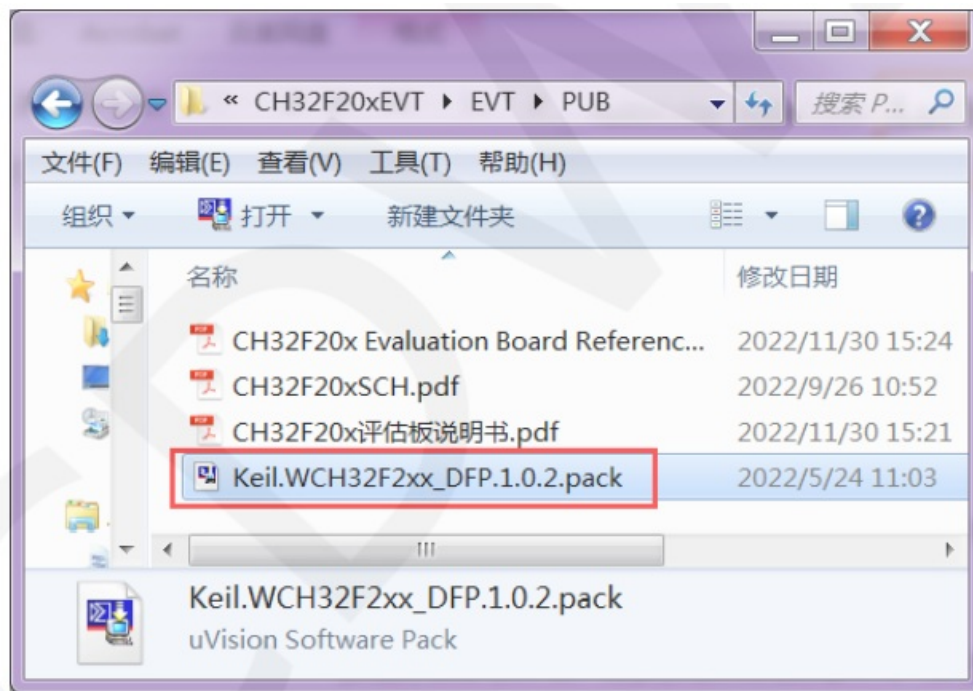
- CH32F103C8T6: [https://www.wch.cn/downloads/CH32F103EVT\\_ZIP.html](https://www.wch.cn/downloads/CH32F103EVT_ZIP.html)
- CH32F203C8T6: [https://www.wch.cn/downloads/CH32F20xEVT\\_ZIP.html](https://www.wch.cn/downloads/CH32F20xEVT_ZIP.html)

After downloading the official information package, unzip it and find the pack file in the EVT\ PUB directory, as shown in the following figure:

### CH32F103C8T6's pack:



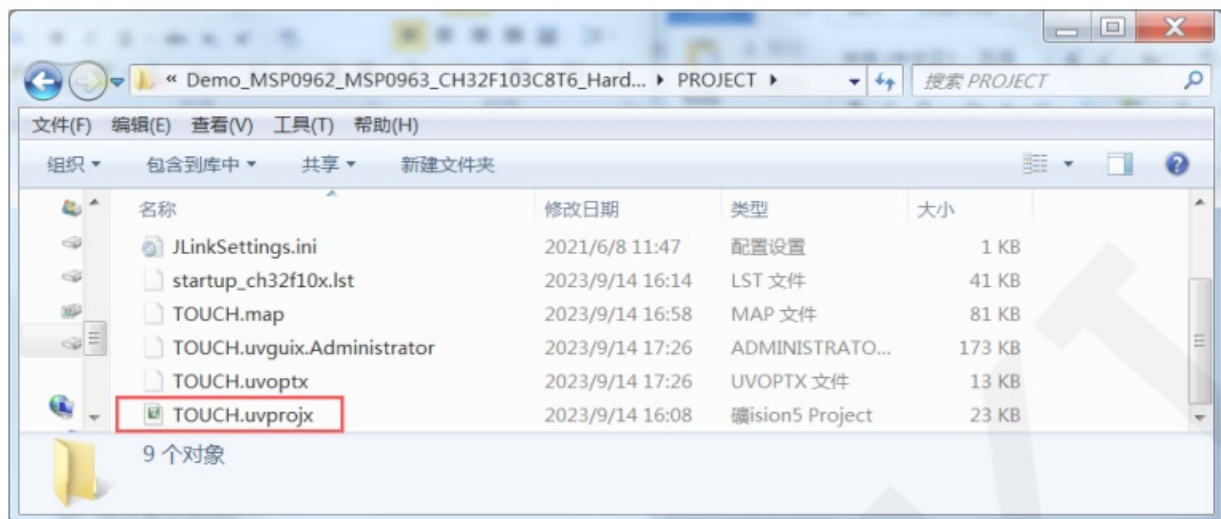
### CH32F203C8T6's pack:



Double click on the pack file and follow the prompts to install.

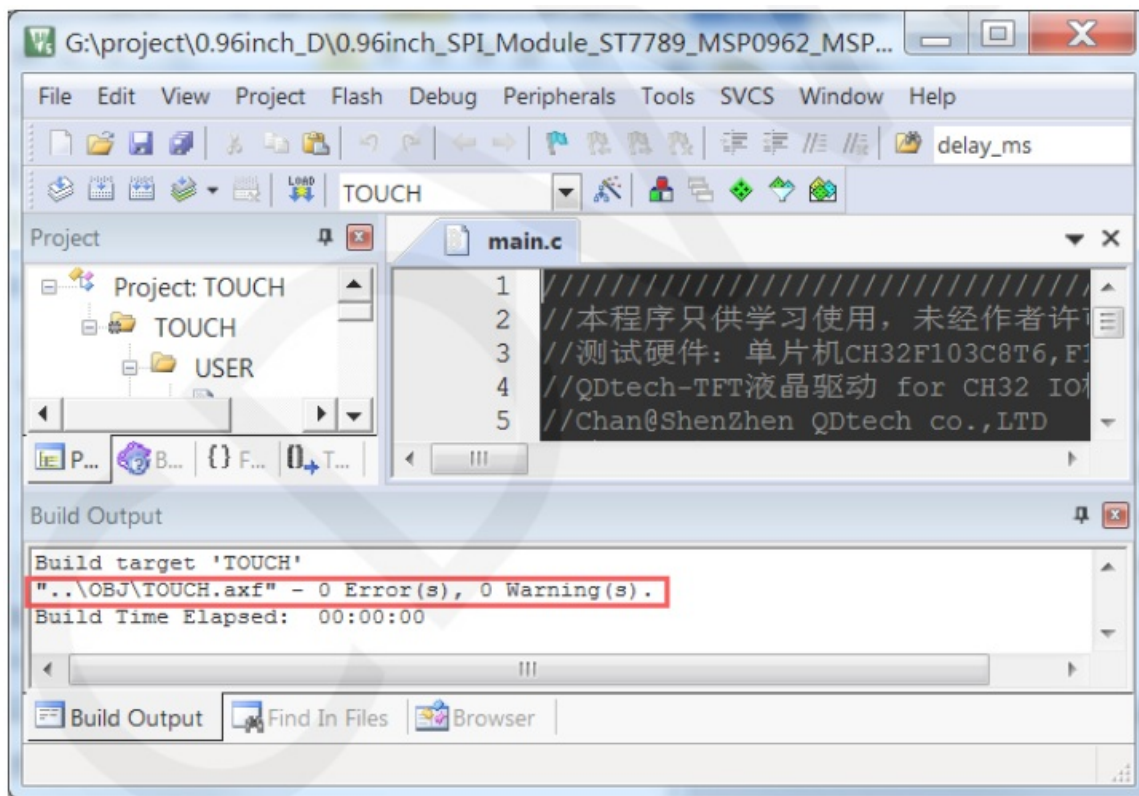
### Compiling Programs

After the library installation is completed, open the PROJECT directory under the sample program, locate the uvprojx file, double-click to open the sample project, as shown in the following figure:



After opening the sample project, you can make modifications to the project code (or not). After the modifications are completed, click the compile button to compile the code. The following prompt appears, indicating successful compilation, as shown in the following figure:





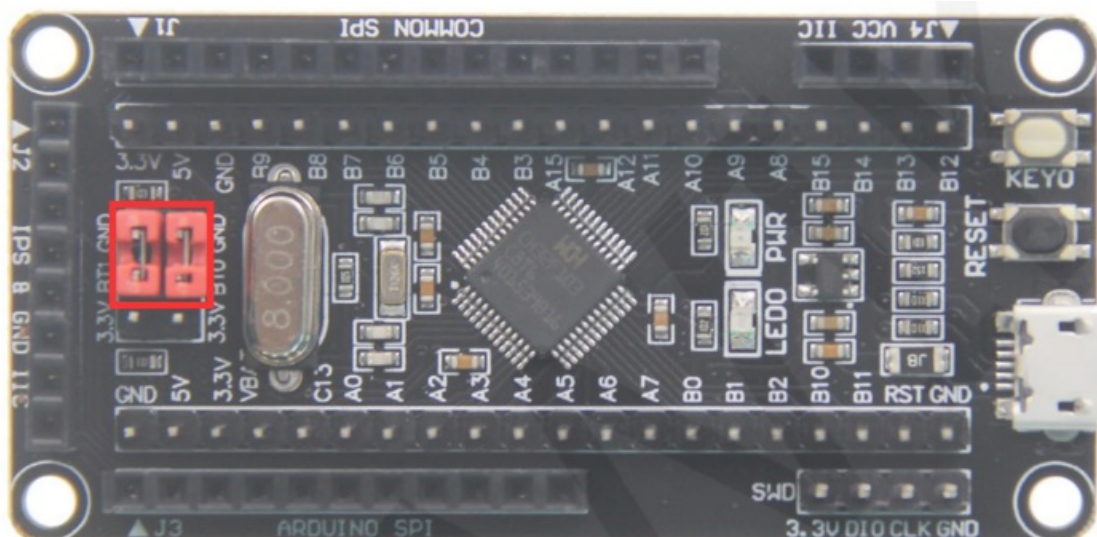
## Download and Run Programs

The development board supports SWD download, USB download, and serial port download. When downloading SWD, ST-Link or WCH Link downloaders can be used. Here is an introduction to SWD download. For other download methods, please refer to the documentation in the development board documentation package or consult the internet.

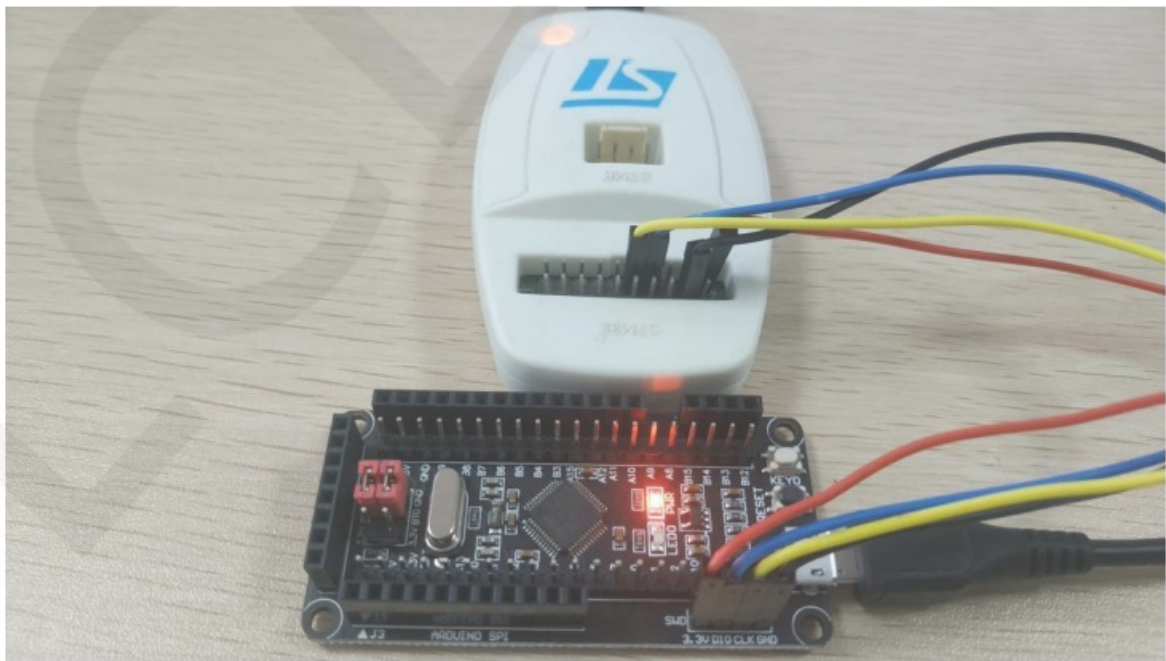
The steps for downloading SWD are as follows (using the CH32F103C8T6 development board as an example):

- **A.** Firstly, ensure that the BT0 and BT1 pins of the MCU remain low, as shown in the following figure:

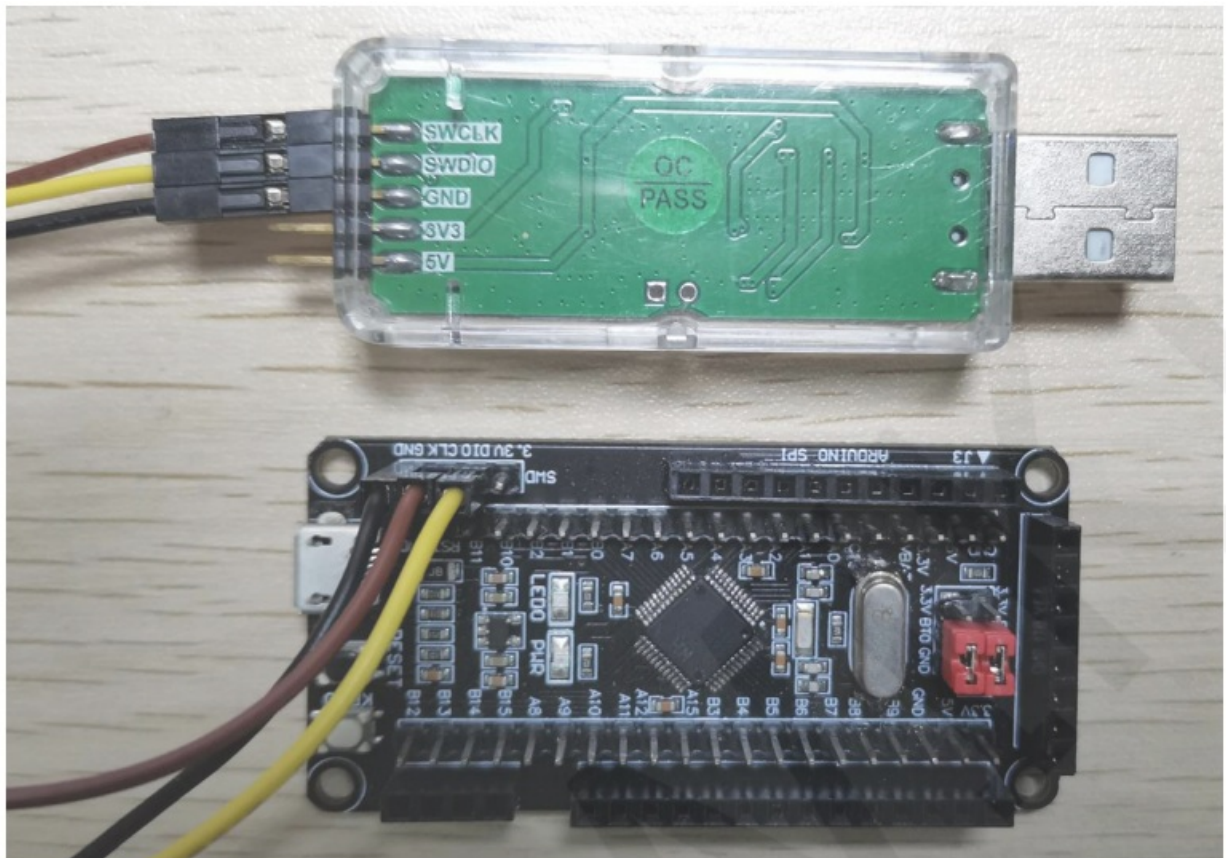
The BT0 and BT1 pins of CH32F103C8T6 are connected to GND using jump caps.



- **B.** Find the SWD interface of the development board and connect it one by one with the pins of the emulator (theoretically, any emulator that supports the SWD protocol supports it), as shown in the following figure:
  - Connect to ST-Link:

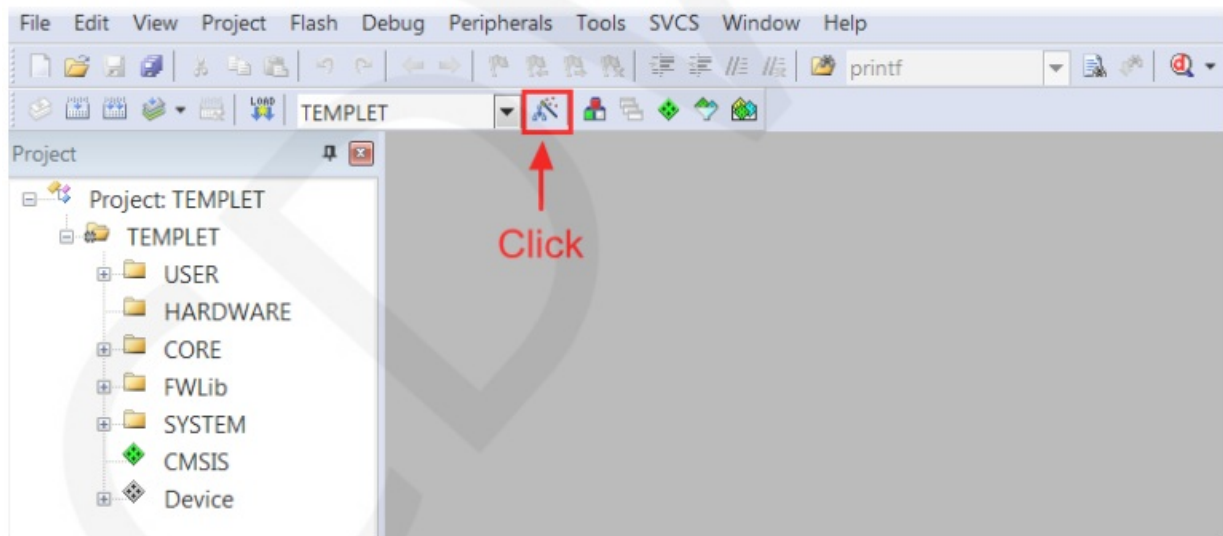


- Connect to WCH-Link:



- C. Open the KEIL tool software and click the button shown in the following figure:

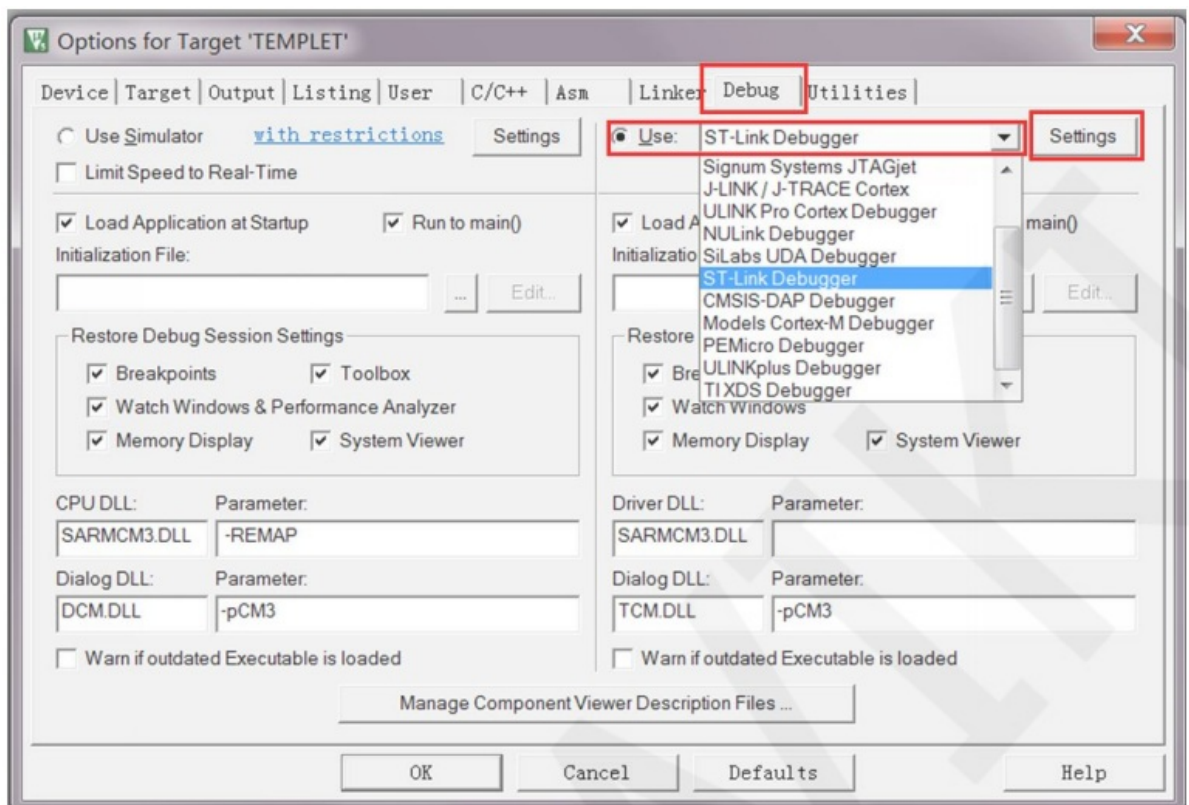




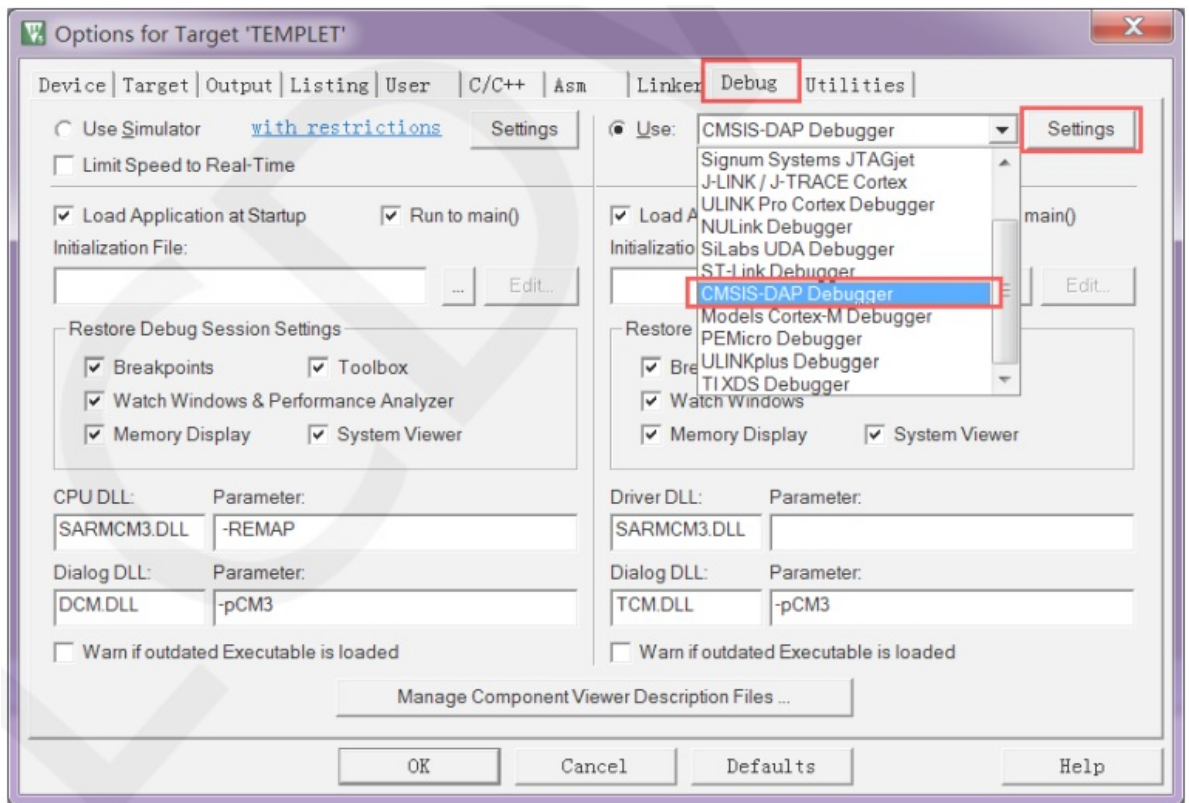
- **D.** Click the Debug button in the pop pop-up interface, and then select the emulator in Use.
  - If using ST -Link , please select ST -LINK Debugger
  - If using WCHWCH-Link , please select CMSISCMSIS-DAP Debugger

As shown in the following figure:

- **Using ST ST-Link:**

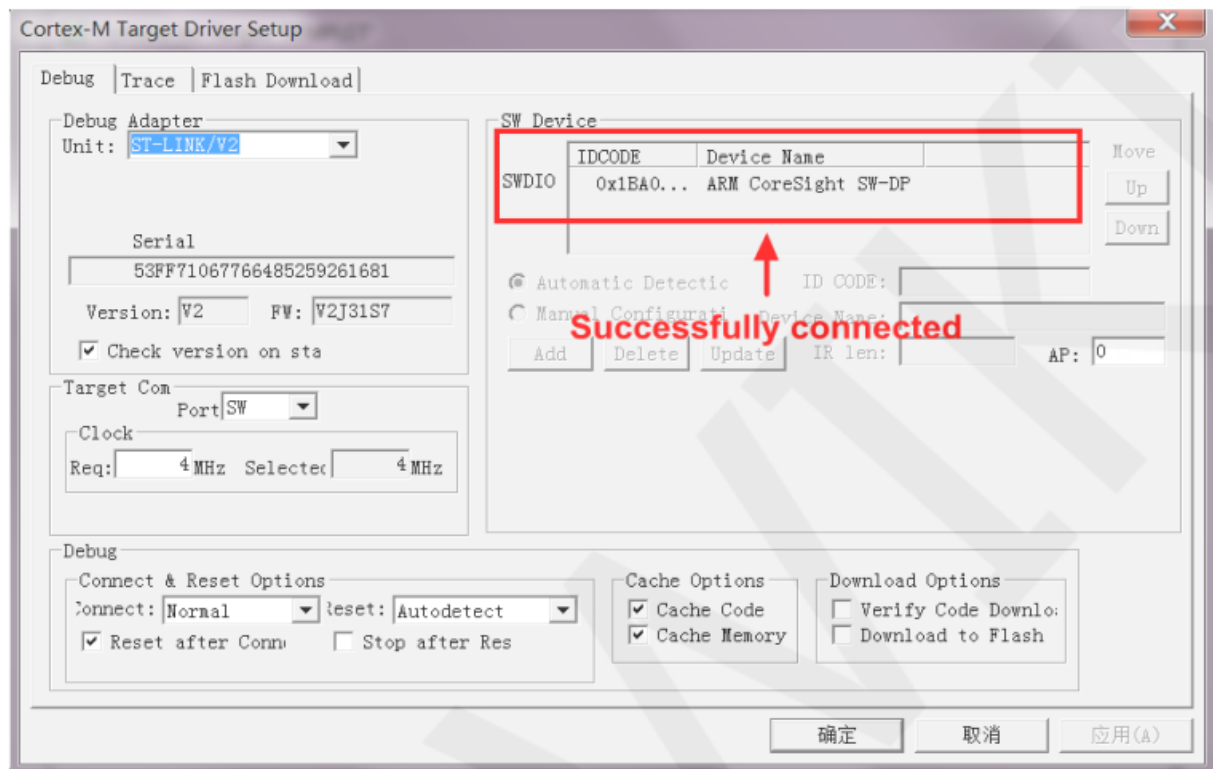


- **Using WCHWCH-LinkLink:**

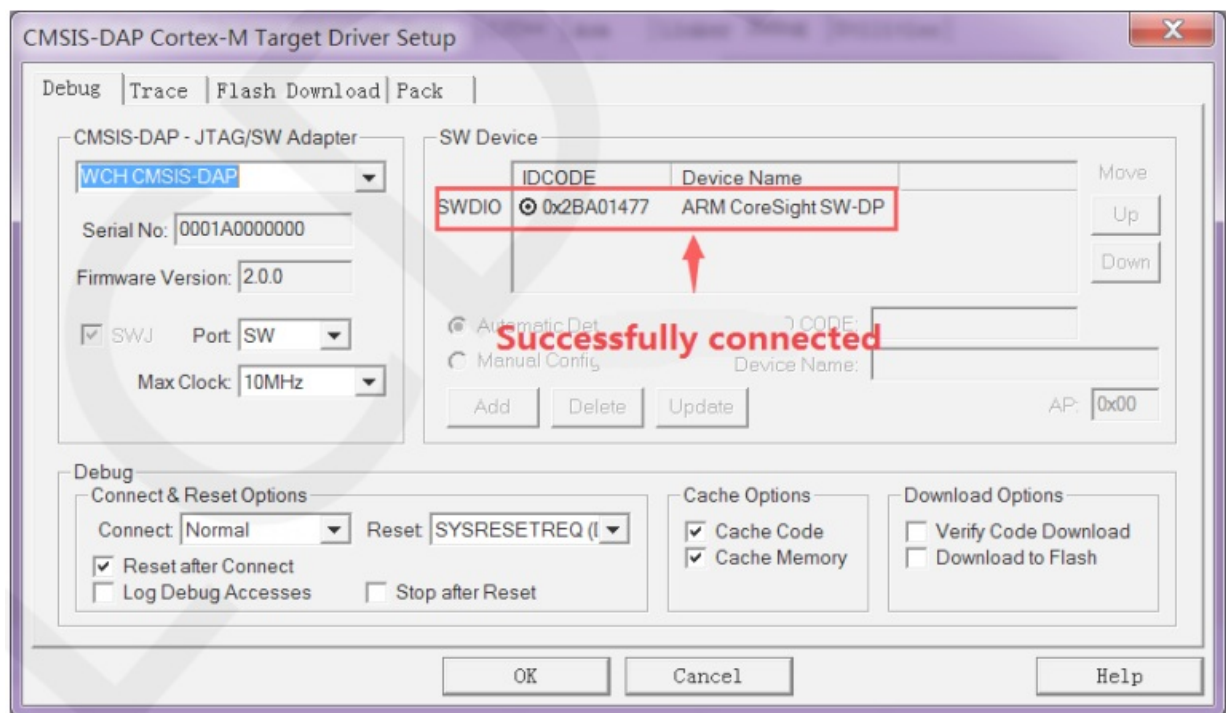


- E. Power on the development board and click the Settings button next to Use (as shown in the previous operation). The following interface will pop up, indicating that the emulator has successfully connected:

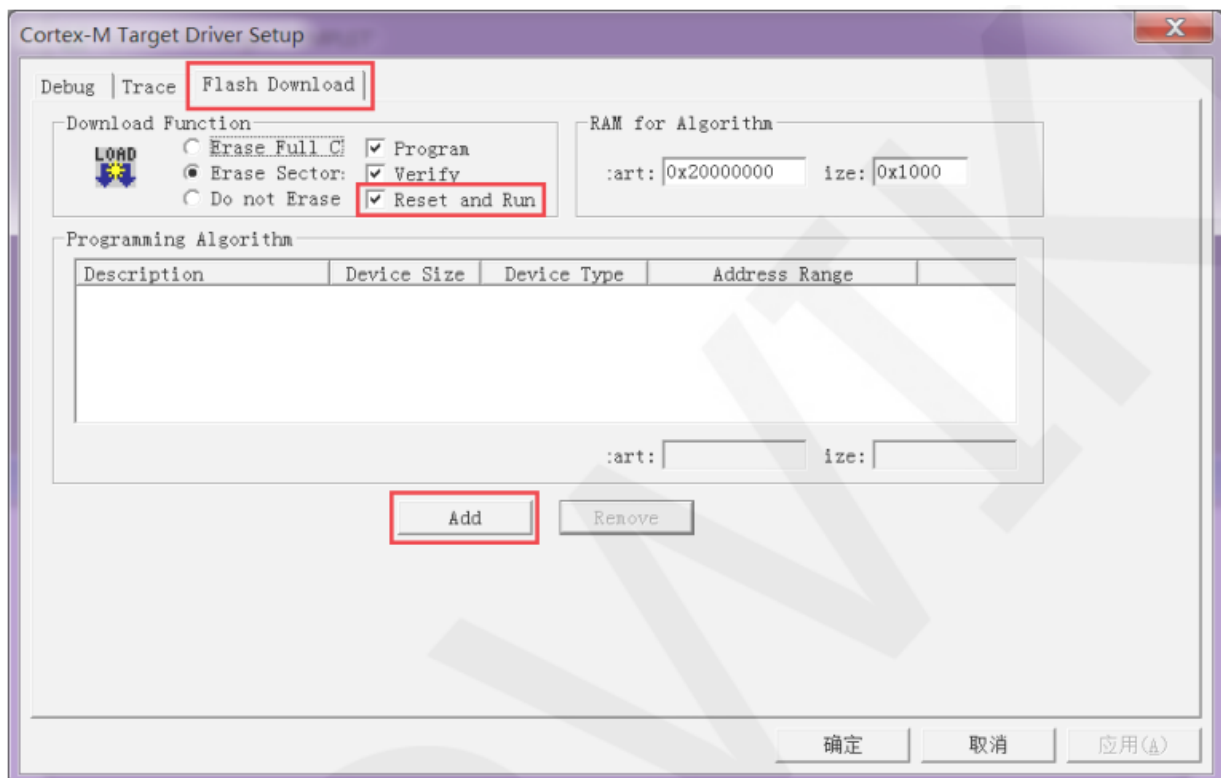
- ST -Link connection successful:



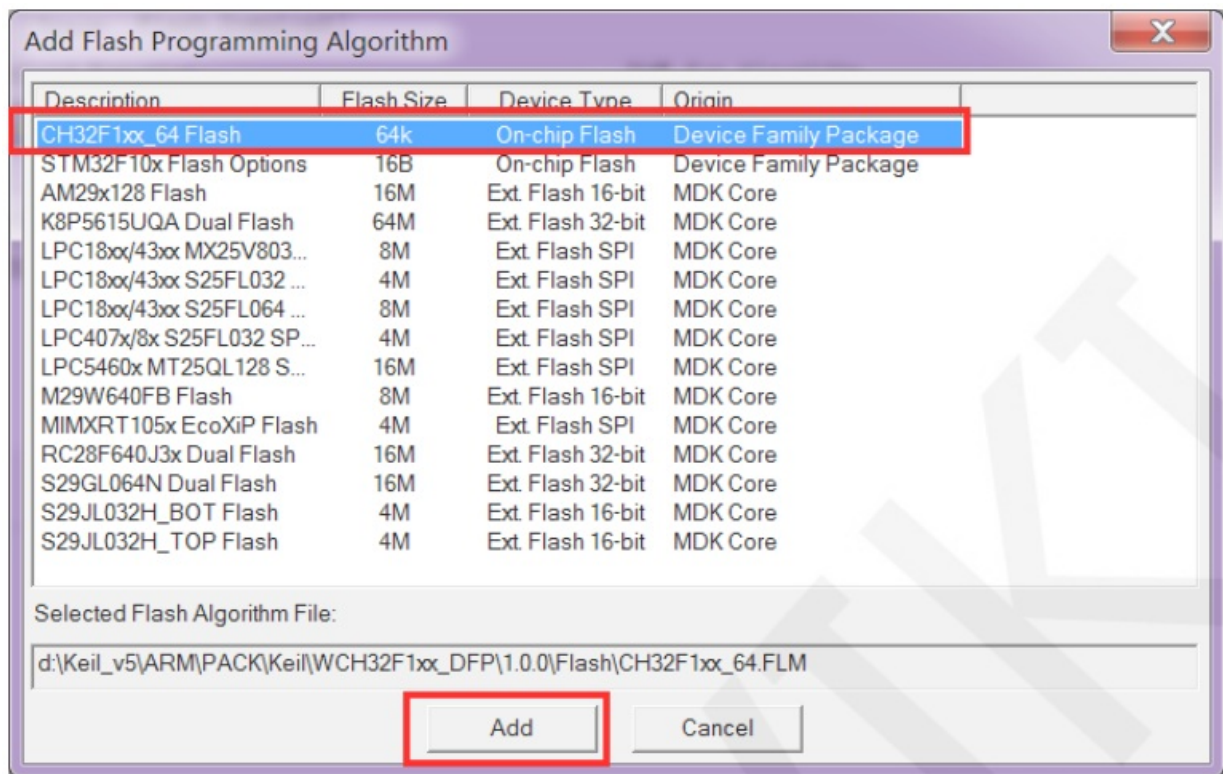
- WCH-Link connection successful:



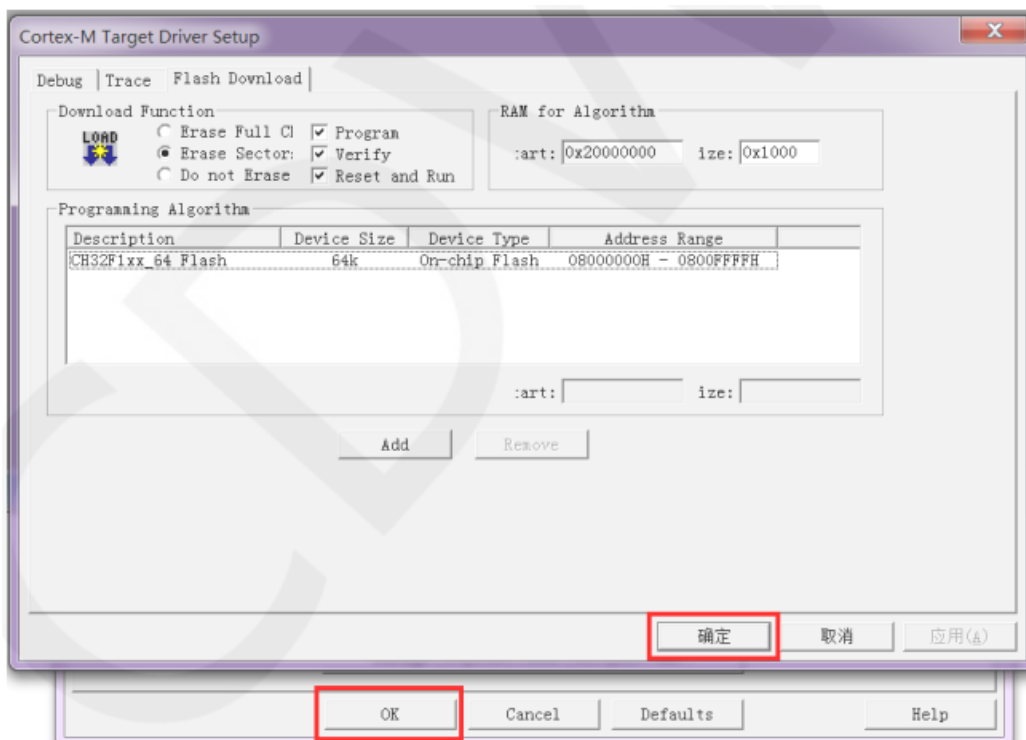
- **F.** Click the Flash Download button to enter the flash settings interface, as shown in the following figure (if flash has been selected, this step can be omitted): If you want the program to automatically run after successful download, you need to check Reset and Run . Otherwise, after successful download, you need to press the reset button or power off to restart before running the program.



- **G.** Click on the Add button (as shown in the above figure) to select flash. Generally, the first one is selected (the algorithm has already been processed), and once it is selected, click on the Add button below to exit, as shown below:

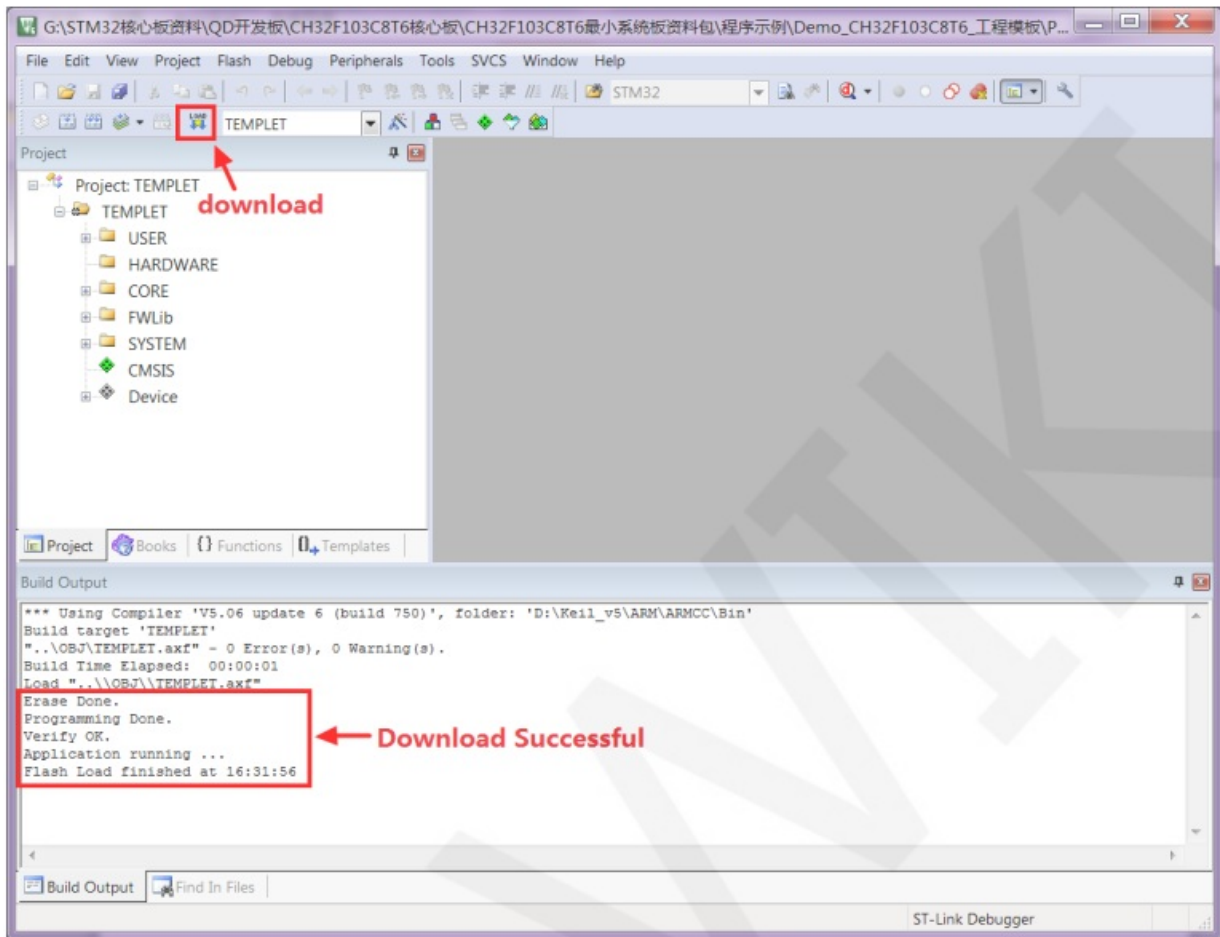


- H. Click the OK button and the OK button to exit the settings interface, as shown in the following figure:



- I. Click the download button to download the program, and the following prompt will appear, indicating successful download, as shown in the following figure:






- **J.** If the display module displays characters and graphics normally, it indicates that the program has run successfully.

[www.lcdwiki.com](http://www.lcdwiki.com)

## Documents / Resources

	<p><a href="#">LCDWIKI MSP0962 IPS Module [pdf] Instructions</a>            CH32, MSP0962, MSP0963, MSP0962, MSP0962 IPS Module, IPS Module, Module</p>
---	---

## References

- [User Manual](#)

[Manuals+](#), [Privacy Policy](#)

This website is an independent publication and is neither affiliated with nor endorsed by any of the trademark owners. The "Bluetooth®" word mark and logos are registered trademarks owned by Bluetooth SIG, Inc. The "Wi-Fi®" word mark and logos are registered trademarks owned by the Wi-Fi Alliance. Any use of these marks on this website does not imply any affiliation with or endorsement.