

LCDWIKI
ESP32-32E 3.5 Inch
Display Module



LCDWIKI ESP32-32E 3.5 Inch Display Module User Manual

[Home](#) » [LCDWIKI](#) » LCDWIKI ESP32-32E 3.5 Inch Display Module User Manual 

Contents

- [1 LCDWIKI ESP32-32E 3.5 Inch Display Module](#)
- [2 Specifications](#)
- [3 Product Usage Instructions](#)
- [4 FAQ](#)
- [5 Power on the product](#)
- [6 Install the USB to the serial port driver](#)
- [7 Burn the bin file](#)
- [8 Run the program](#)
- [9 Documents / Resources](#)
 - [9.1 References](#)
- [10 Related Posts](#)

LCDWIKI

LCDWIKI ESP32-32E 3.5 Inch Display Module



Specifications

- **Product Name:** LCDWIKI 3.5inch ESP32-32E E32R35T&E32N35T
- **Model Number:** CR2024-MI3275
- **Display Module Size:** 3.5 inches
- **Manufacturer:** LCDWIKI
- **Website:** www.lcdwiki.com

Product Usage Instructions

Power On the Product

Use the Type-C cable with power supply and data transmission function to connect the computer to the product and power the product.

Install the USB-to-Serial Port Driver

1. Locate the USB-SERIAL_CH340.zip package in the 7-_Tool_software folder and decompress it.
2. Double-click the CH341SER.EXE executable program to install the driver.
3. After installation, connect the computer USB to the development board and check if the CH340 port is identified in the device manager.

FAQ

- **Q:** What should I do if the product does not power on after following the instructions?
- **A:** If the product does not power on, check the connection of the Type-C cable and ensure that the power supply is functioning properly.
- **Q:** How can I verify that the USB-to-serial port driver is successfully installed?
- **A:** You can verify the successful installation of the driver by checking if the CH340 port is identified in the device manager of your computer.

Power on the product

Use the Type C cable with power supply and data transmission function to connect the computer to the product and power the product. As shown in the picture below:



Figure 1 Powering on the product

Install the USB to the serial port driver

- Locate the USB SERIAL_CH340.zip package in the software folder and decompress it.
- goto the folder after decompression, double click the " CH341SER.EXE " executable program, pop up the installation window, and then click "Install" button to continue the installation, as shown in the following picture:



Figure 2 Installing the CH340C driver

- After the installation is successful, click the window OK button to exit. Connect the computer USB to the development board power on, and then enter the computer device manager, you can see that the CH340 port is identified under the port, as shown in the following picture:



Figure 3 Identifying CH340 ports

Burn the bin file

- Open the "Flash_Download folder in _Quick_Start ", locate the flash_download_tool folder, open the folder, and double click the exe executable file of flash_download_tool. As shown in the picture below:

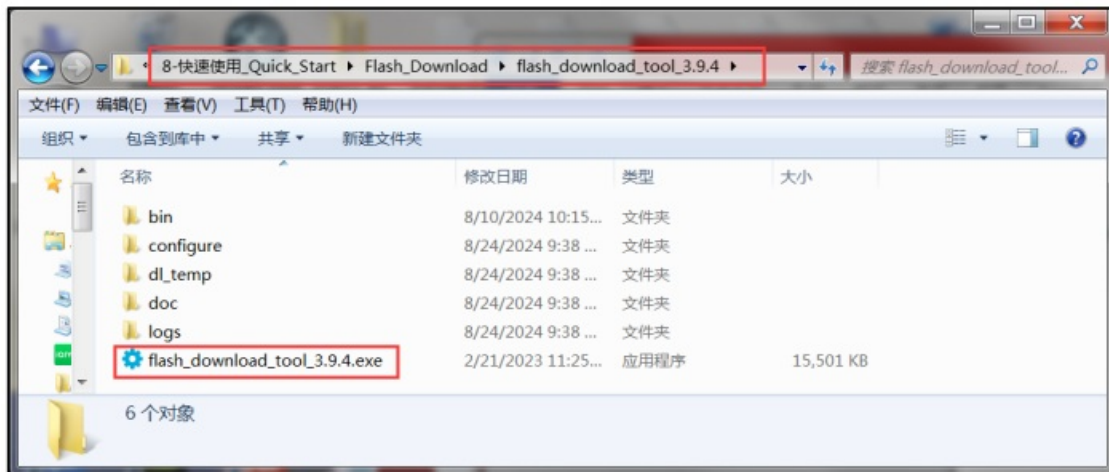


Figure 4 Opening flash_download_tool

- After opening the Flash download tool, ChipType selects " ESP32 ", WorkMode selects Develop ", LoadMode keep the default (UART), and then click OK " button, as shown below:

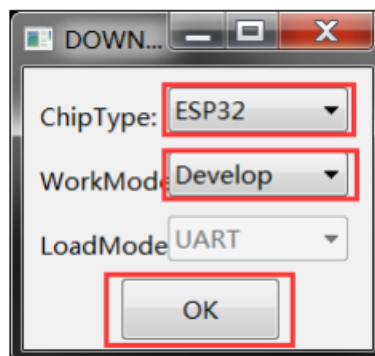


Figure 5 flash_download_tool Setup 1

- Enter the Flash download tool interface, first select the bin file to burn, bin the file in the data package _Quick_Start /bin " directory, as shown in the following figure:

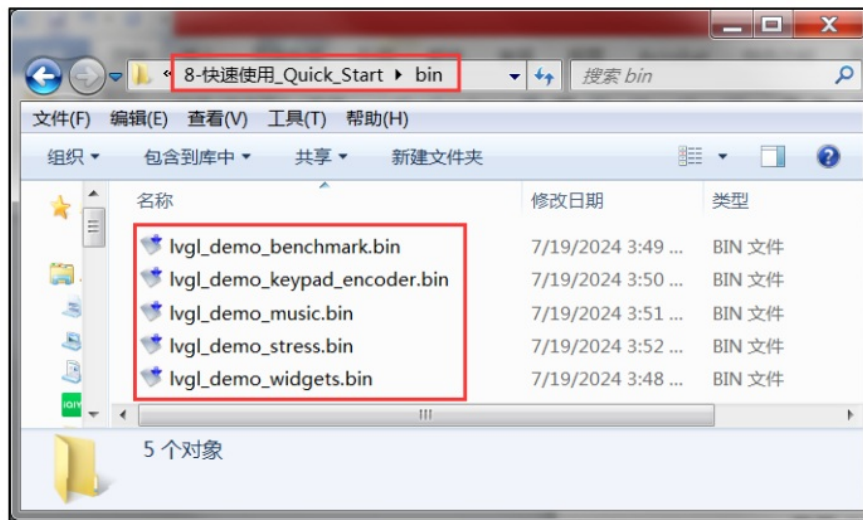


Figure 6 Bin file location

- Click the button with three dots in the middle to select the bin file in the above steps. After the selection, check the box in the front and set the burning address as "0", as shown in the following picture:

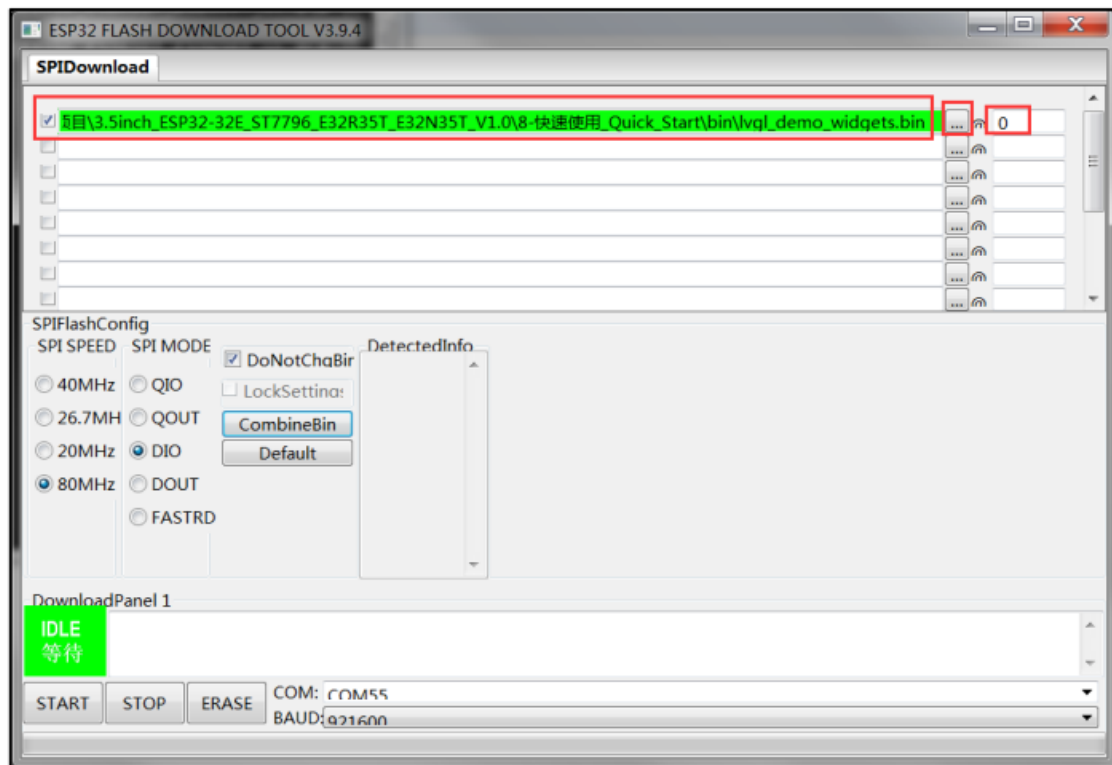


Figure 7 Select the Bin file

- Set SPI SPEED to "80MHz", SPI MODE to DIO, and keep other Settings default, as shown in the following figure:

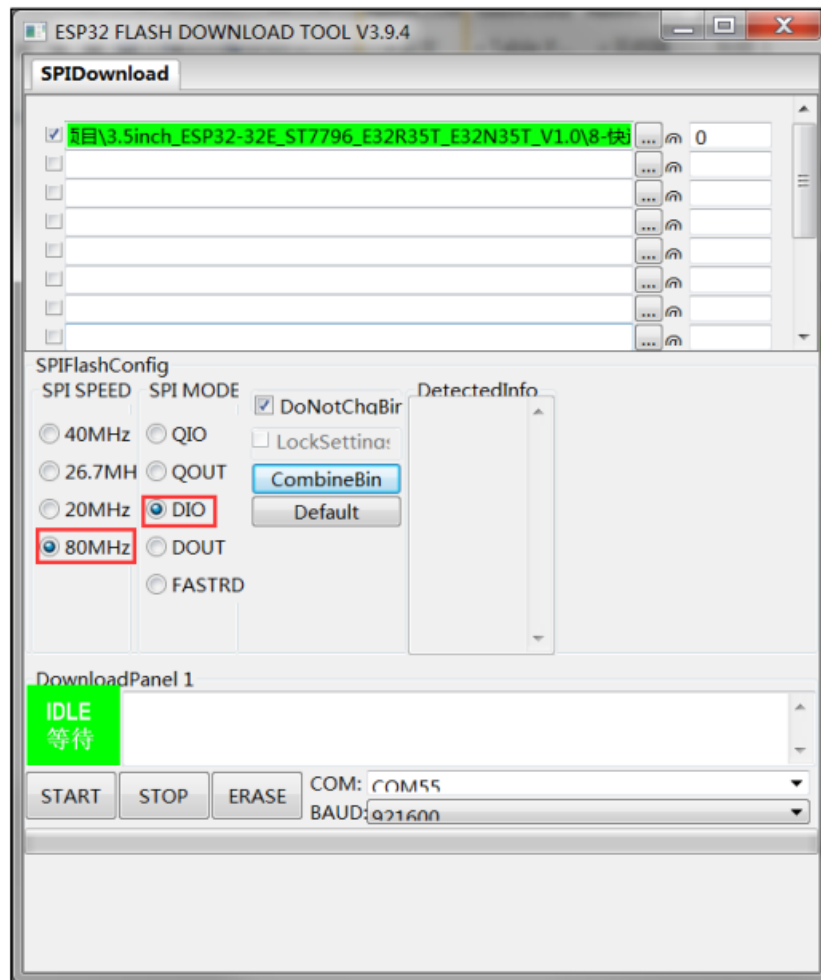


Figure 8 flash_download_tool Setup 2

- Set COM, as long as the product is normally connected to the computer, the COM port will be automatically recognized, click the drop-down menu to select. Set BAUD, and click the drop-down menu to select, the larger the value, the faster the burning speed, but can not exceed the maximum transmission rate supported by the USB to serial chip. As shown in the picture below:

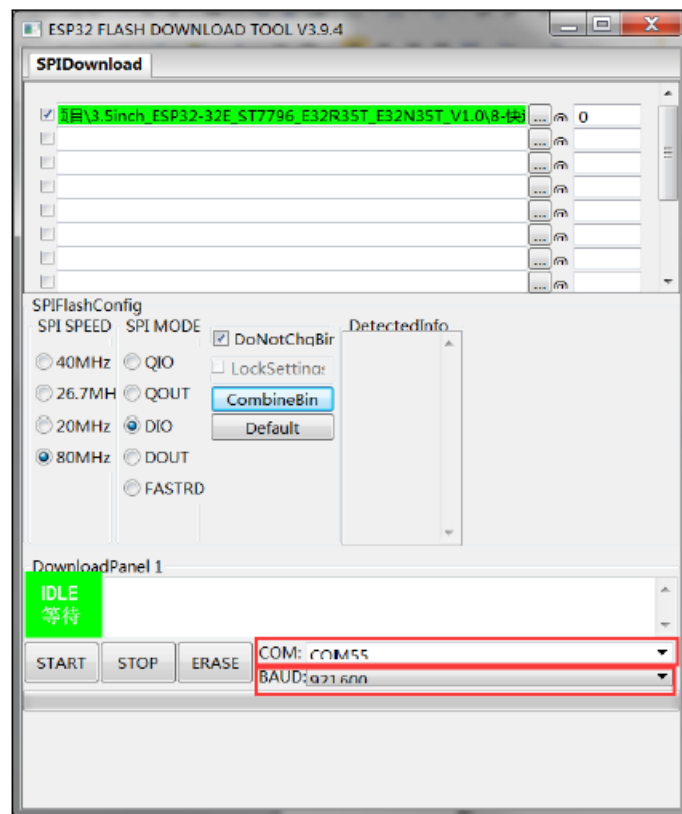


Figure 9 flash_download_tool Setup 3

- Click the "START" button to enter the burning state. During the burning process, the status changes: "Waiting for synchronous power on" → "Downloading" → "FINISH", and the progress bar will also be loaded, as shown in the following picture:

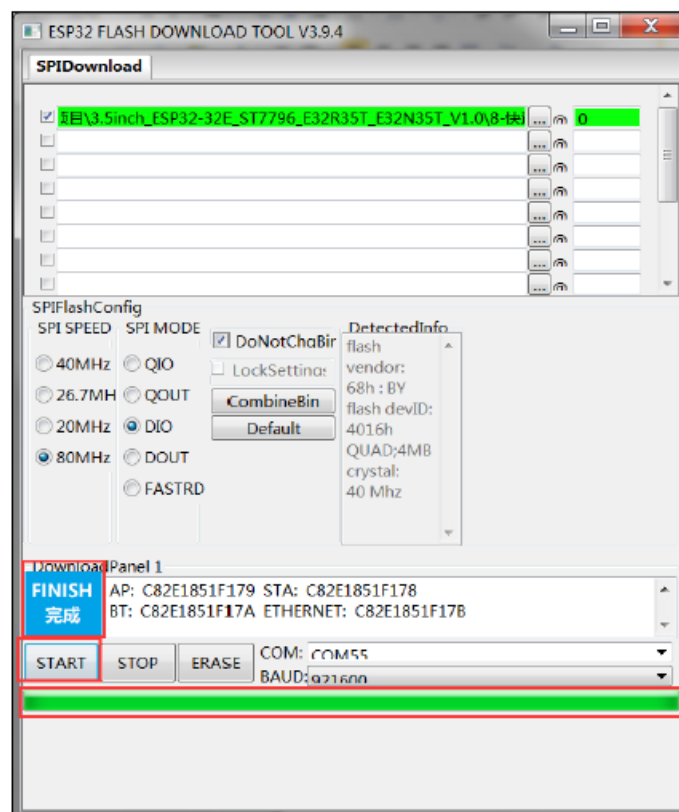


Figure 10 Burning Bin file

Run the program

After the Bin file is burned, press the reset button of the product or power on the product again, and you can see the operation effect of the program, as shown in the figure below

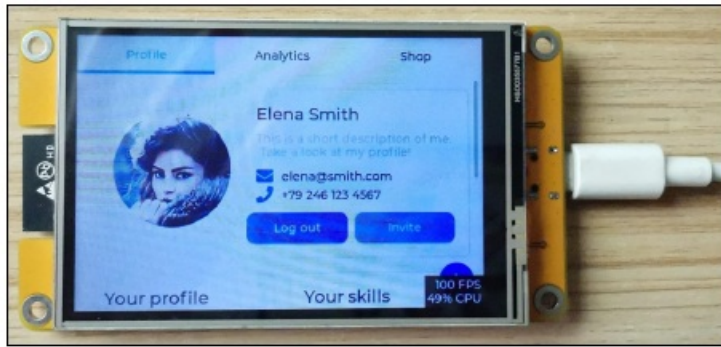


Figure 11 Run the program

www.lcdwiki.com

Documents / Resources

| | |
|---|---|
|  | <p>LCDWIKI ESP32-32E 3.5 Inch Display Module [pdf] User Manual E32R35T, E32N35T, ESP32-32E 3.5 Inch Display Module, ESP32-32E, 3.5 Inch Display Module , Display Module, Module</p> |
|---|---|

References

- [User Manual](#)

Manuals+, Privacy Policy

This website is an independent publication and is neither affiliated with nor endorsed by any of the trademark owners. The "Bluetooth®" word mark and logos are registered trademarks owned by Bluetooth SIG, Inc. The "Wi-Fi®" word mark and logos are registered trademarks owned by the Wi-Fi Alliance. Any use of these marks on this website does not imply any affiliation with or endorsement.