



# LC-POWER M-ATX 2016MB Case System User Guide

[Home](#) » [LC-POWER](#) » LC-POWER M-ATX 2016MB Case System User Guide

# LC-POWER™

**M-ATX CASE  
2016MB**

[www.lc-power.com](http://www.lc-power.com)

## Contents [ [hide](#) ]

- [1 Introduction](#)
- [2 Backside fan installation](#)
- [3 Top cover fan installation](#)
- [4 Power supply installation](#)
- [5 Mainboard installation](#)
- [6 PCI card / GPU installation](#)
- [7 USB 3.0 installation](#)
- [8 HD Audio installation](#)
- [9 I/O panel installation](#)
- [10 Service & notes](#)
- [11 Documents / Resources](#)
- [12 Related Posts](#)

## Introduction

Thank you for purchasing this PC case from LC-Power. Please read the manual before usage. Specifications may be subject to change without prior notice.

## Backside fan installation



## Top cover fan installation



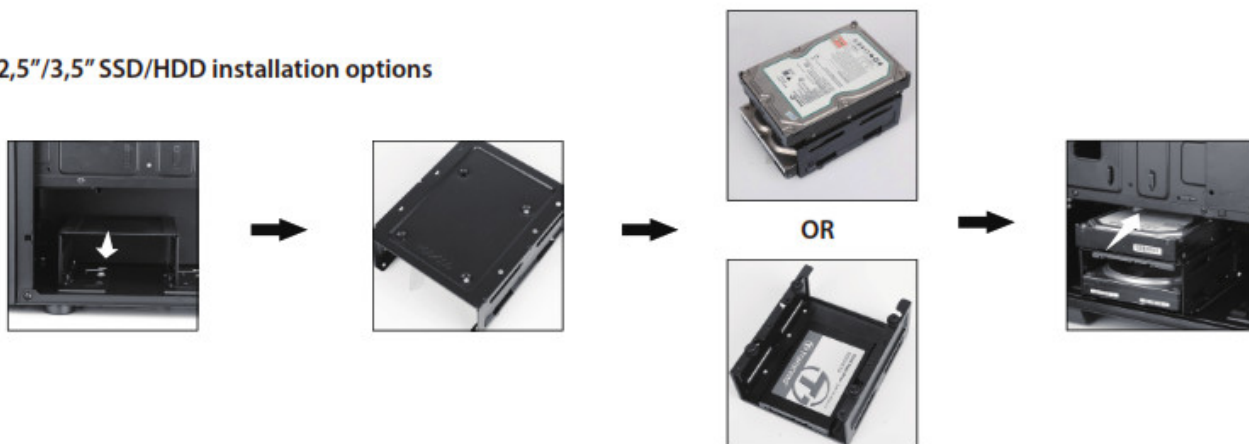
## Power supply installation



## Mainboard installation



### 2,5"/3,5" SSD/HDD installation options



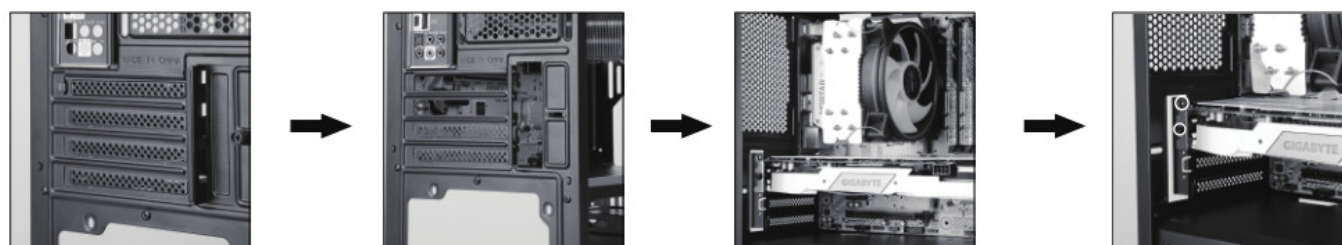
### 2,5" SSD/HDD installation



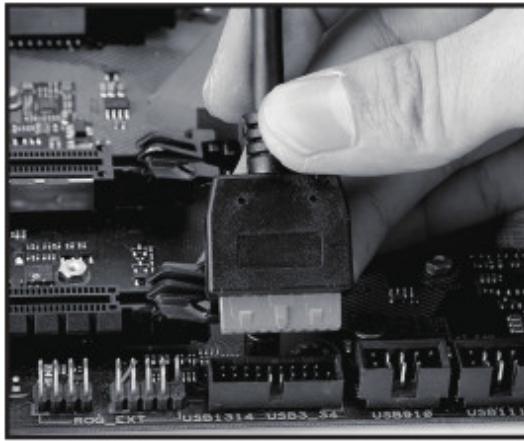
### 2,5" SSD/HDD installation



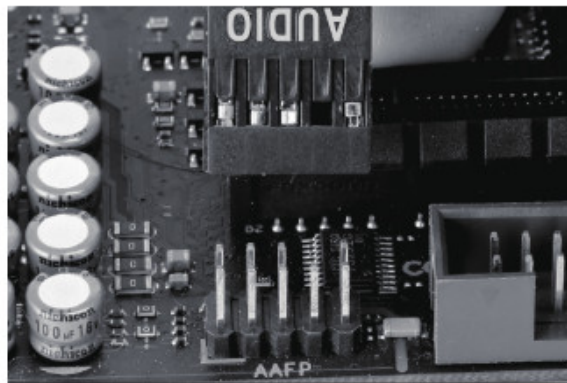
### PCI card / GPU installation



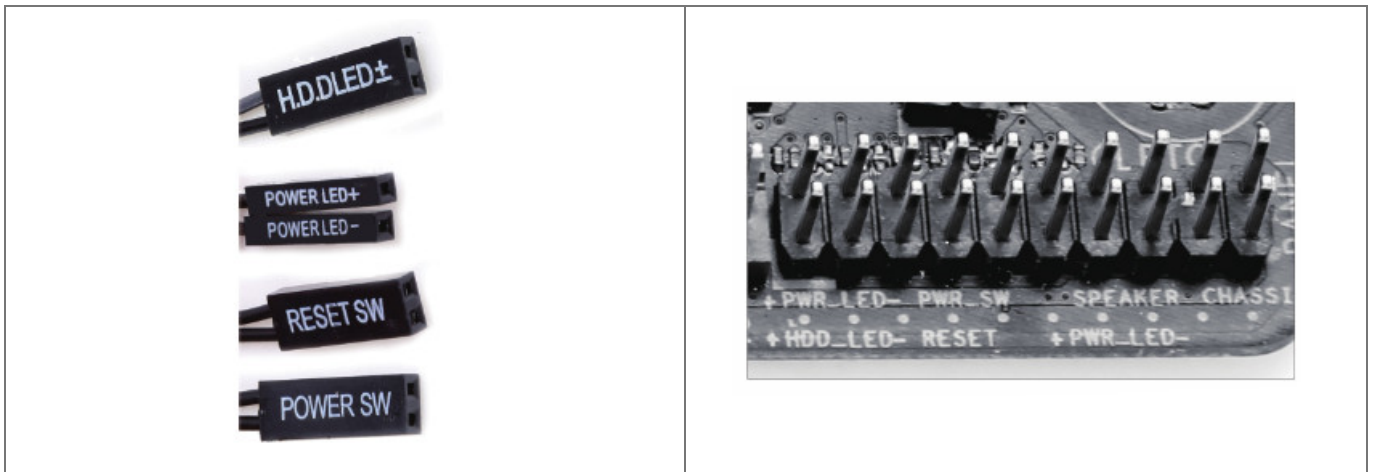
### USB 3.0 installation



## HD Audio installation



## I/O panel installation



## Service & notes

Avoid direct sunlight and a high-temperature environment, keep the case far away from fire and heat sources. Keep it in dry places, keep it away from corrosively causing materials.

The product has a two-year warranty period from the date of purchase, service issues will be handled by your dealer.

If the case is damaged due to improper operation, the warranty period expires immediately.


Check [www.lc-power.com](http://www.lc-power.com) or contact us by e-mail at: [service@lc-power.com](mailto:service@lc-power.com).

Silent Power Electronics GmbH Formerweg 8 47877 Willich Germany

[www.lc-power.com](http://www.lc-power.com) [service@lc-power.com](mailto:service@lc-power.com)

Silent Power Electronics GmbH  
Formerweg 8  
47877 Willich  
Germany  
[www.lc-power.com](http://www.lc-power.com)  
[service@lc-power.com](mailto:service@lc-power.com)

## Documents / Resources

	<a href="#">LC-POWER M-ATX 2016MB Case System</a> [pdf] User Guide M-ATX, 2016MB Case System, M-ATX 2016MB Case System, Case System
---	--