



# LC POWER LC-DOCK-U3-HUB HDD Docking Station User Manual

[Home](#) » [LC-POWER](#) » LC POWER LC-DOCK-U3-HUB HDD Docking Station User Manual 

## Contents

- [1 LC POWER LC-DOCK-U3-HUB HDD Docking Station](#)
- [2 Specifications](#)
- [3 Installation](#)
- [4 Features](#)
- [5 Documents / Resources](#)

LC POWER-LOGO

## LC POWER LC-DOCK-U3-HUB HDD Docking Station



Thank you for choosing our product. Please read the manual carefully before you use the product.

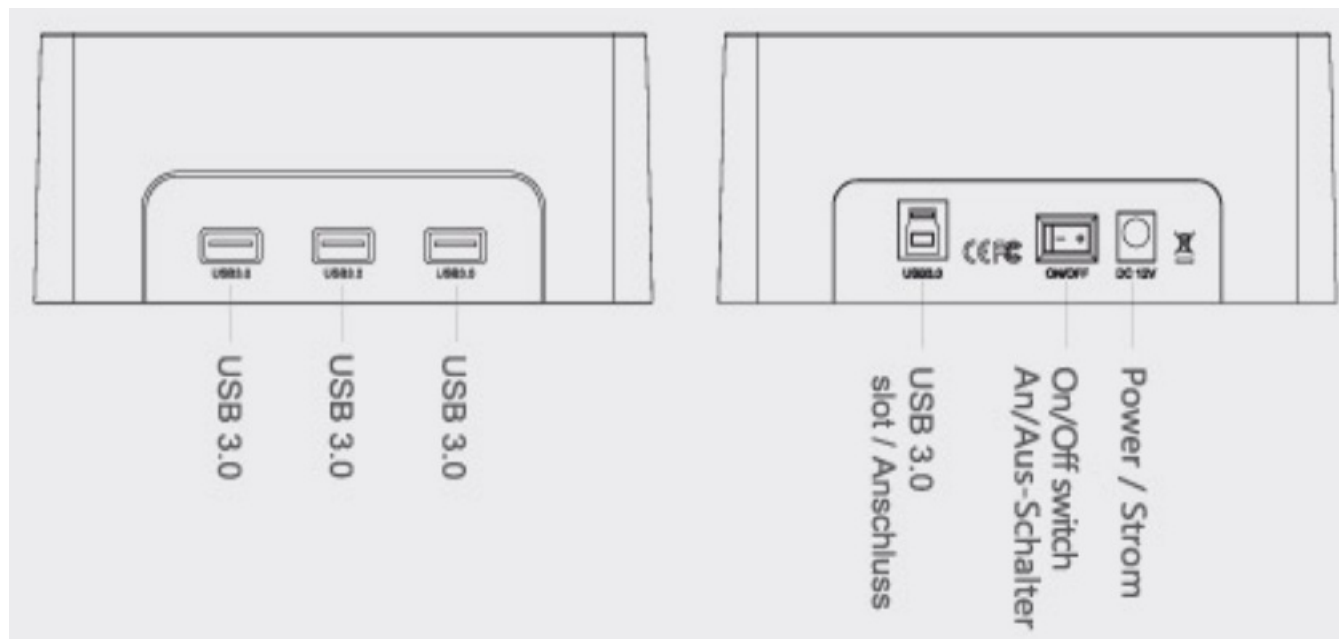
## Service

If you need technical support, please contact us via [support@l-power.com](mailto:support@l-power.com).

If you need after sales service, please contact your retailer.

## Specifications

LC-DOCK-U3-HUB: HDD/SSD Docking Station / USB 3.0 hub

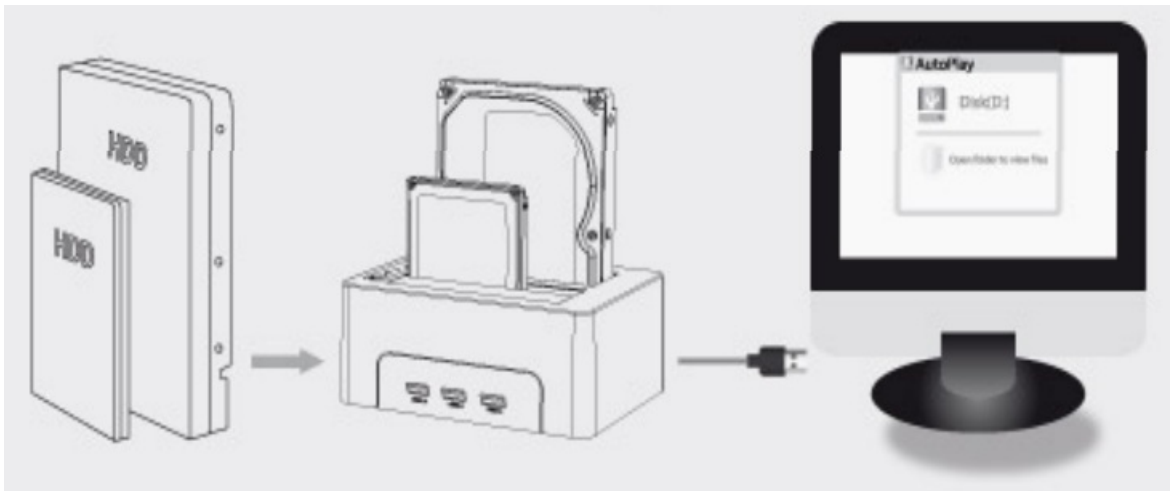


Item	LC-DOCK-U3-HUB
HDD	2,5"/3,5" HDDor SSD (Festplatte oder SSD)
Quantity	2 pcs.
Docking:	Dualbay
Interface	SATA, USB 3.0 (compatible to/ kompatibel zu:USB 2.0)
Function	<b>3portuse3.0hub,1:1cloning,readandwritedata</b>
Size	153 x 112 x 63 mm
Operating s tem	Windows 7/8/10,MacOS
Package contents	DockingStation, user manual, USB cable, power adapter

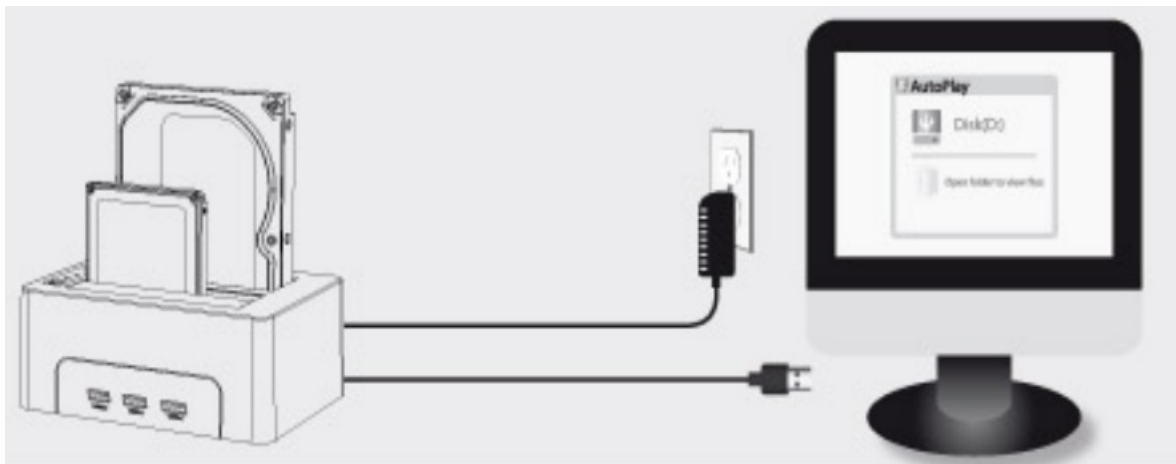
## Installation

### 1. HDD/SSD read/write

Insert the drive(s) correctly into the docking station and connect it to the USB port of your computer.



2. Connect the power adapter and turn on the device. The drive(s) shall be recognised automatically by your computer.

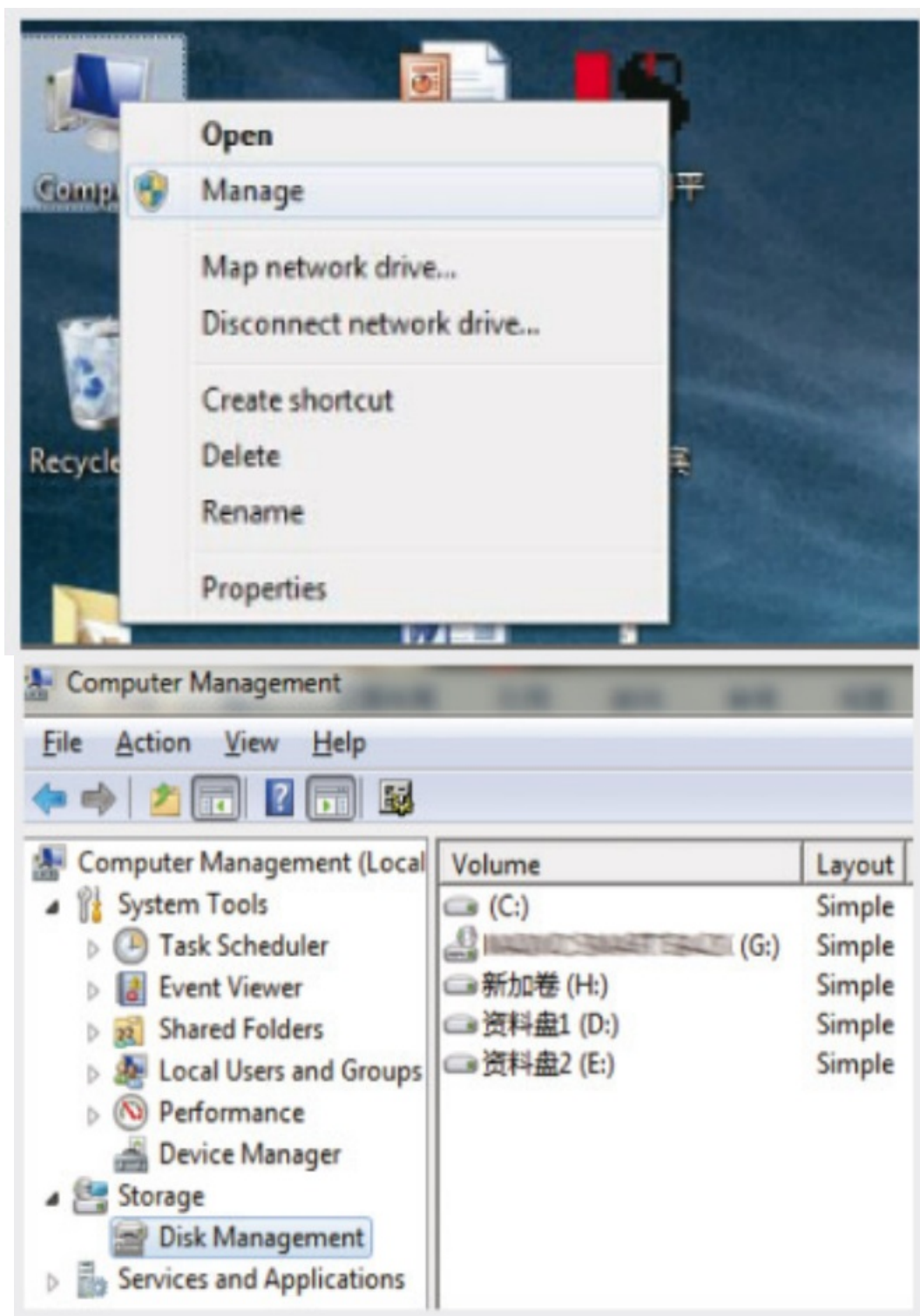


**Note:**

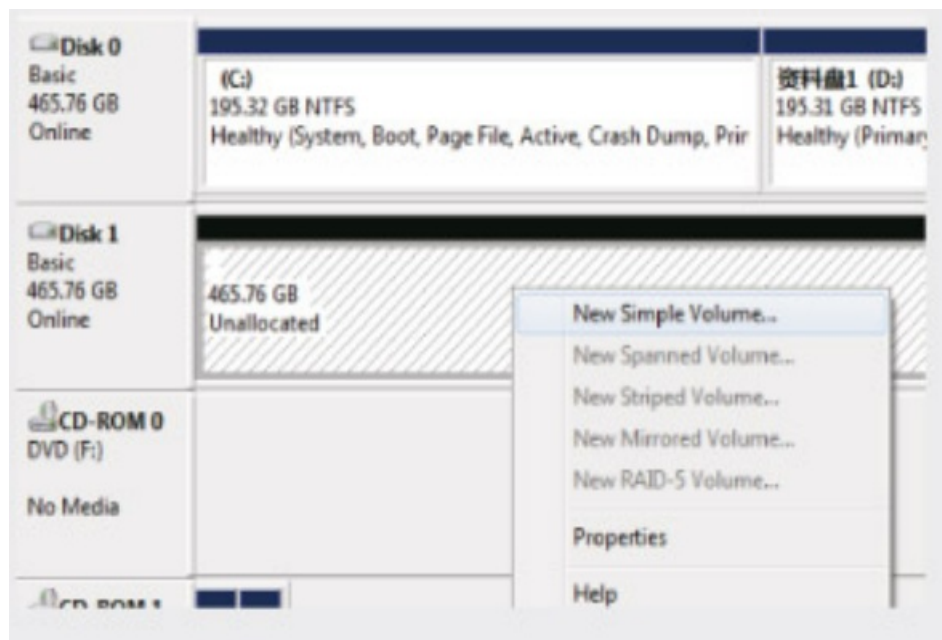
1. Already used drives can be found directly, new drives need to be initialised and formatted first.

**New drive**

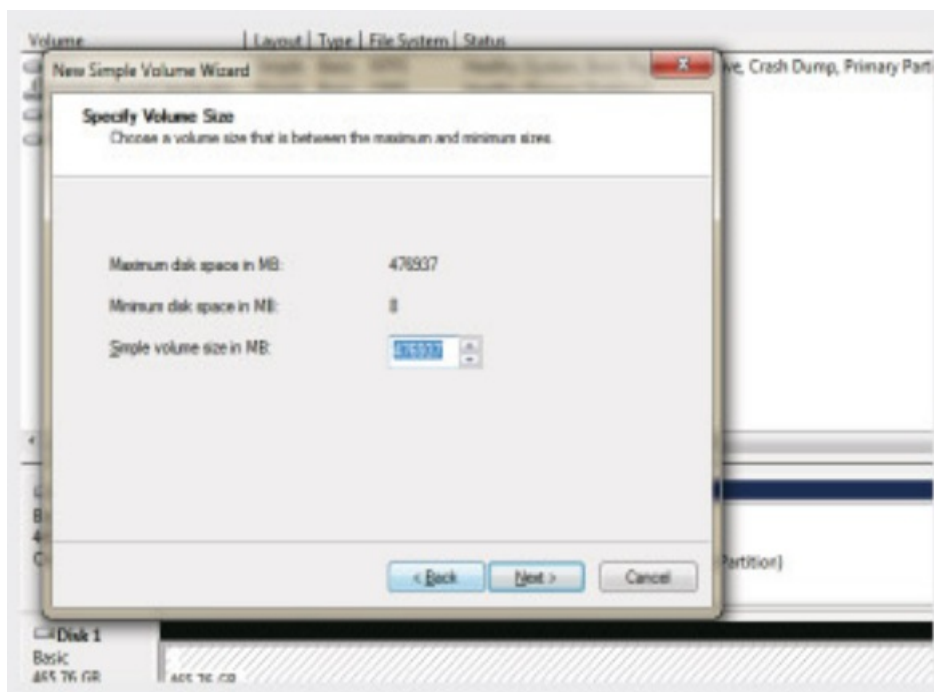
1. Go to „Computer – Manage – Disk management” to find the new drive.



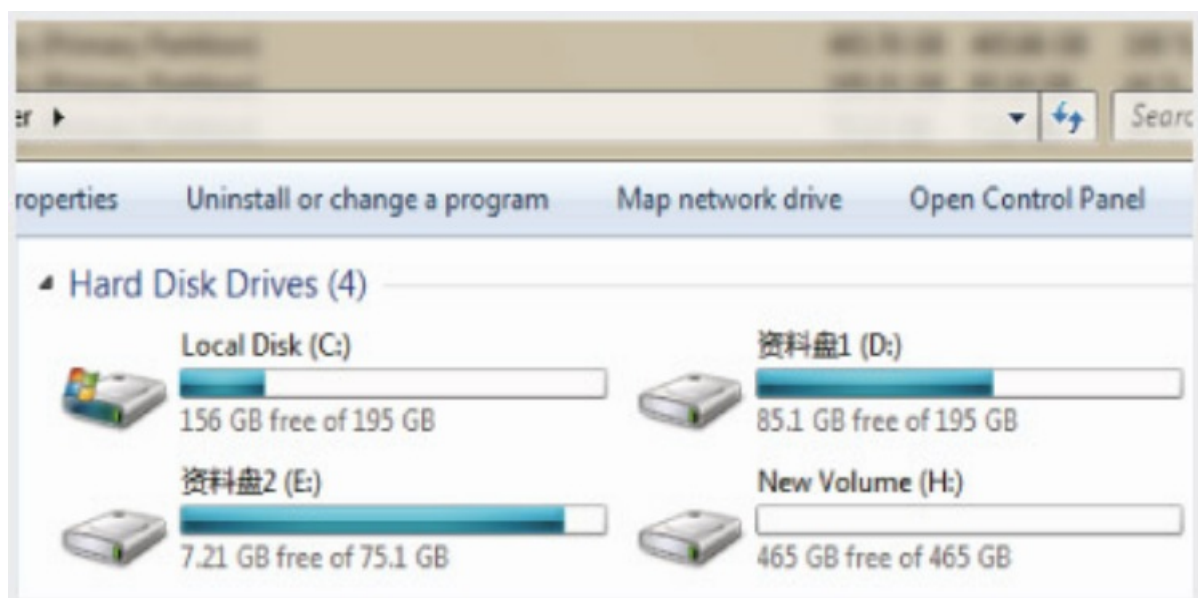
2. Right-click "Disk 1", then click "New Simple Volume",



3. Choose the size of the new partition and click "Next" to finish.



4. You can now find the new drive at „Computer“, it's ready to be used.

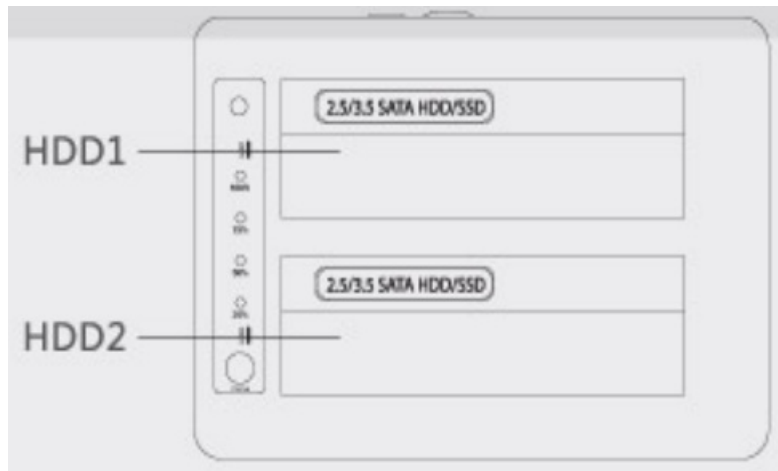


## Features

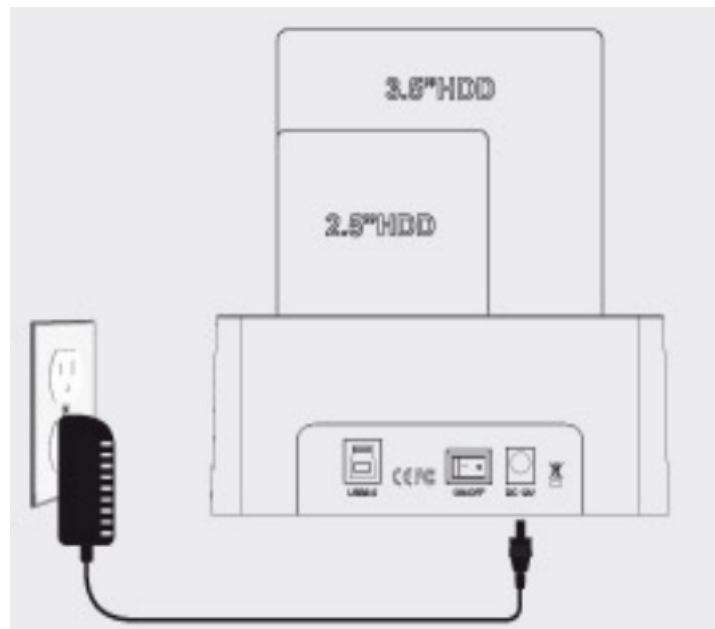
### Cloning

1. Insert a 2,5"/3,5" HDD/SSD into bay 1 and bay 2.

**Note:** Drive 2 must have an equal or higher capacity than drive 1.



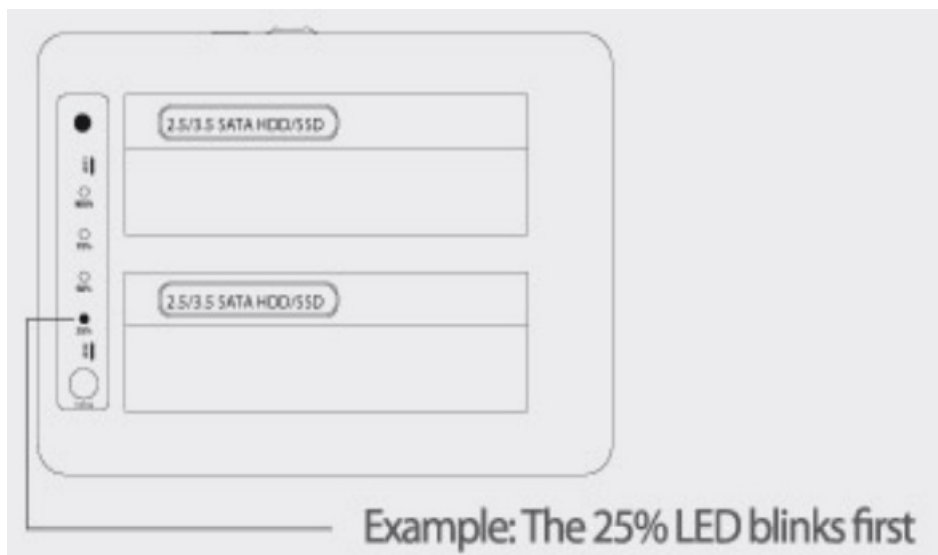
2. Power on the device. A USB connection is not necessary.



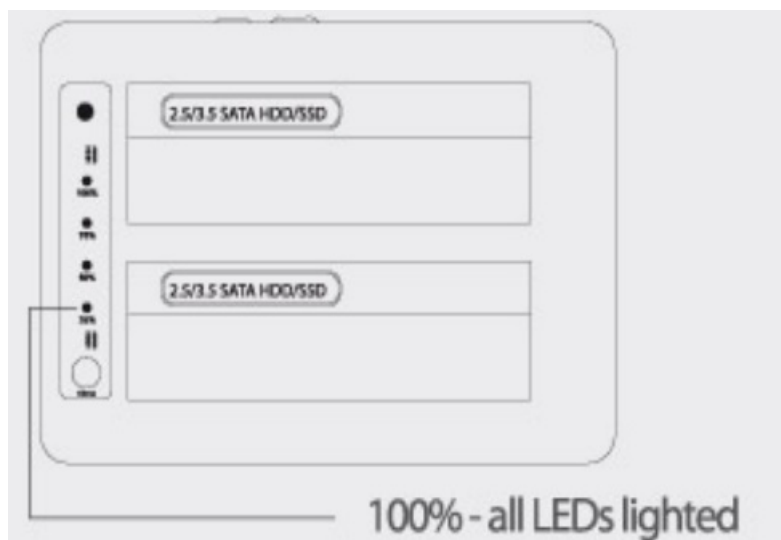
3. When the red power LED is on, press the „Clone“ button until the blue clone % LEDs shine. Release the button to start the cloning process from drive 1 to drive 2. The blue progress LEDs flicker.



4. The blue LEDs will blink according to the current cloning state (25/50/75/100%).

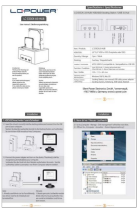


5. When all four LEDs light up, cloning has finished.



Silent Power Electronics GmbH, Formerweg 8, 47877 Willich, Germany, [www.lc-power.com](http://www.lc-power.com)

## Documents / Resources

	<p><a href="#">LC POWER LC-DOCK-U3-HUB HDD Docking Station</a> [pdf] User Manual LC-DOCK-U3-HUB HDD Docking Station, LC-DOCK-U3-HUB, HDD Docking Station, Docking Station</p>
---	---