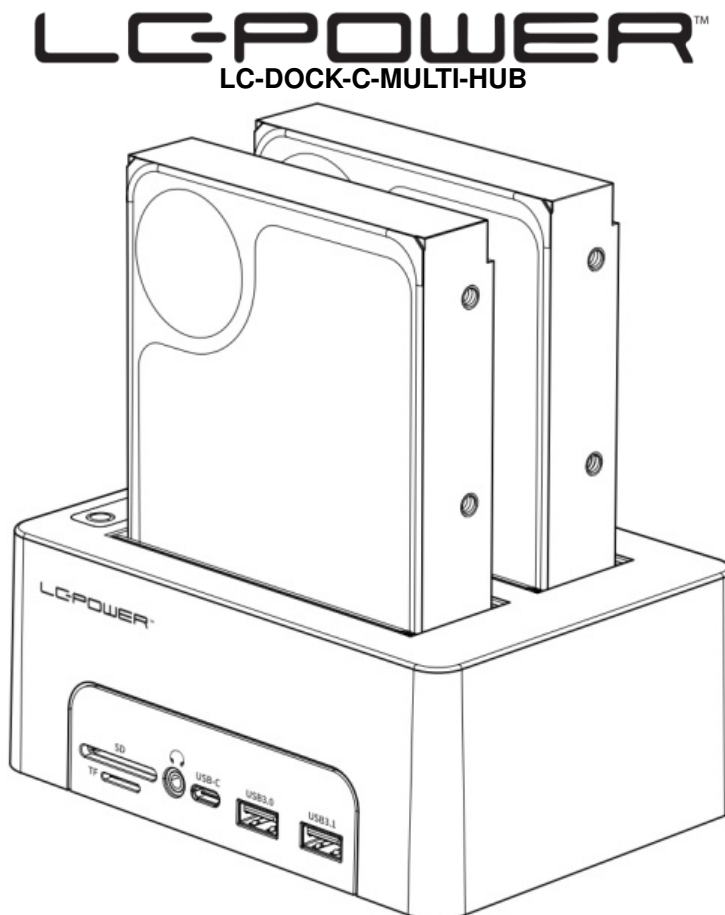




LC-POWER LC Dock C Multi Hub Instruction Manual

[Home](#) » [LC-POWER](#) » LC-POWER LC Dock C Multi Hub Instruction Manual 



Introduction

Thank you for choosing our product. Please read the manual carefully before you use the product.

Service

If you need technical support, please contact us via support@lc-power.com.

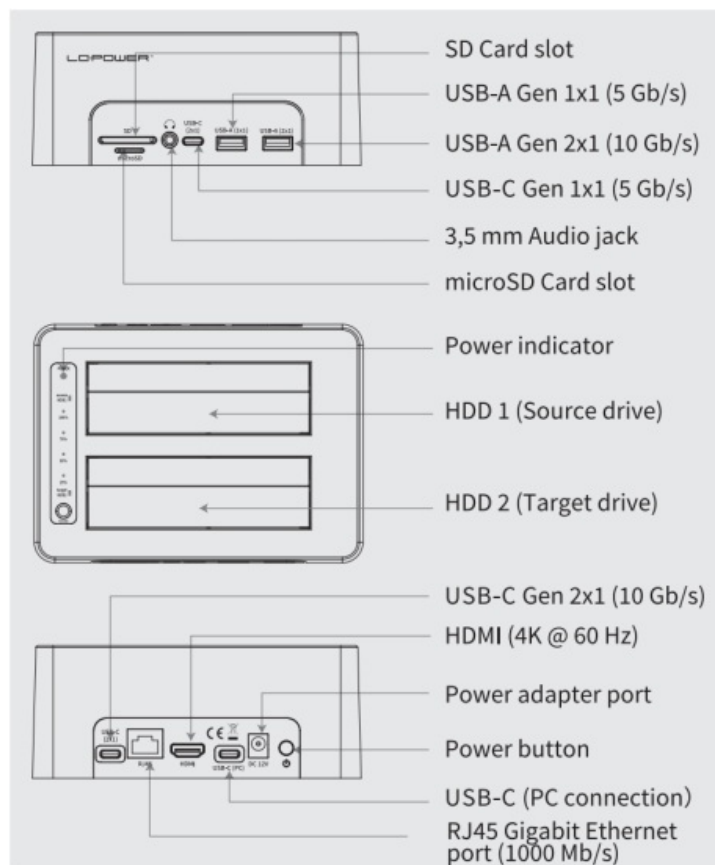
If you need after sales service, please contact your retailer.

Silent Power Electronics GmbH, Formerweg 8, 47877 Willich, Germany

Contents

- 1 Specifications
- 2 HDD/SSD Read & Write:
- 3 New drive formatting:
- 4 Offline cloning:
- 5 Documents / Resources
- 5.1 References

Specifications

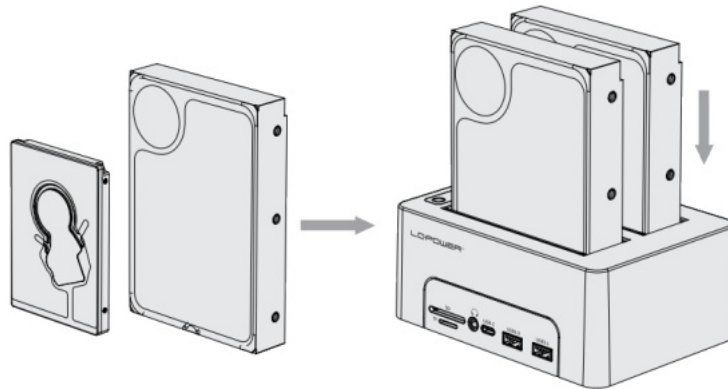


Item	Dual bay hard drive cloning docking station with multifunctional hub
Model	LC-DOCK-C-MULTI-HUB
Features	2x 2,5/3,5" SATA HDD/SSD, USB-A + USB-C (2x1), USB-A + USB-C (1x1), USB-C (2x1, PC connection), HDMI, LAN, 3,5 mm Audio port, SD + microSD Card reader
Material	Plastic
Function	Data transfer, 1:1 Offline cloning
Operating sys.	Windows, Mac OS
Indicator light	Red: power on; HDDs/SSDs inserted; Blue: Cloning progress

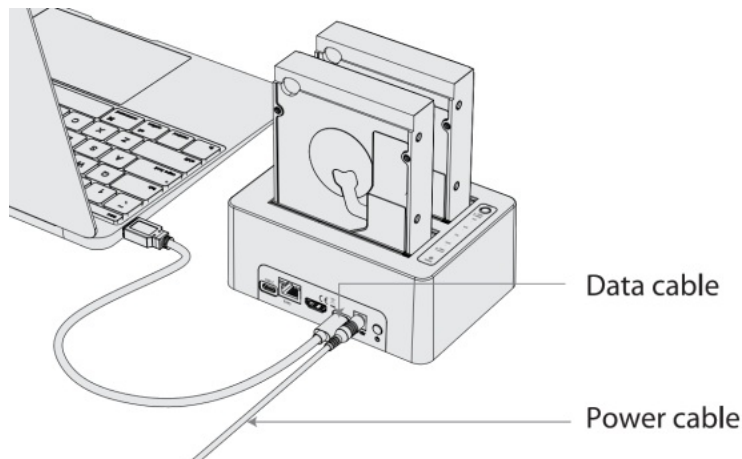
Note: SD and microSD cards can only be read separately; all the other interfaces can be used at the same time.

HDD/SSD Read & Write:

1.1 Insert 2,5"/3,5" HDDs/SSDs into the drive slots. Use the USB-C cable to connect the docking station (port "USB-C (PC)" on the back side) to your computer.



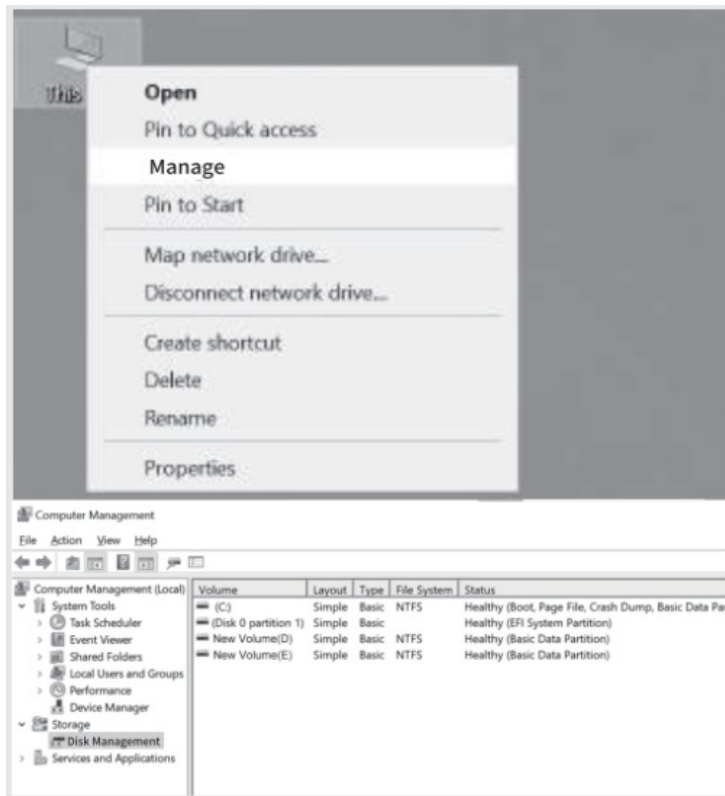
1.2 Connect the power cable to the docking station and push the power switch on the back of the docking station. The computer will find the new hardware and install the matching USB driver automatically.



Note: If a drive has already been used before, you can find it in your explorer directly. If it is a new drive, you need to initialize, partition and format it first.

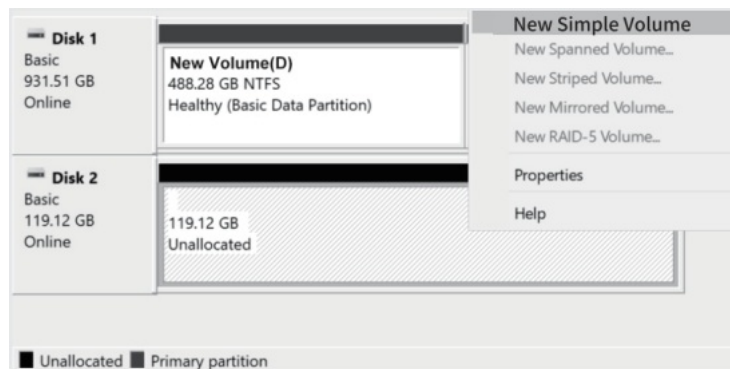
New drive formatting:

2.1 Go to "Computer – Manage – Disk Management" to find the new drive.



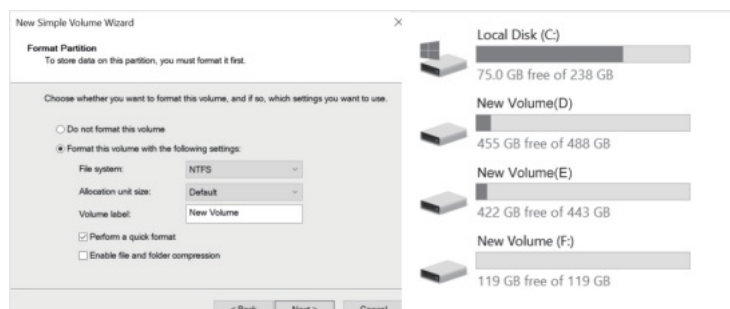
Note: Please choose MBR if your drives have a capacity smaller than 2 TB, and choose GPT if your drives have a capacity larger than 2 TB.

2.2 Right-click “Disk 1”, then click “New Simple Volume”.



2.3 Follow the instructions to choose the size of the partition then click “Next” to finish.

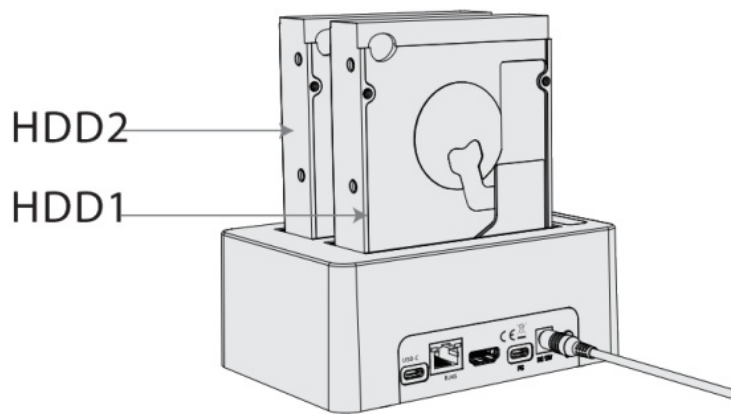
2.4 You can now find the new drive in the explorer.



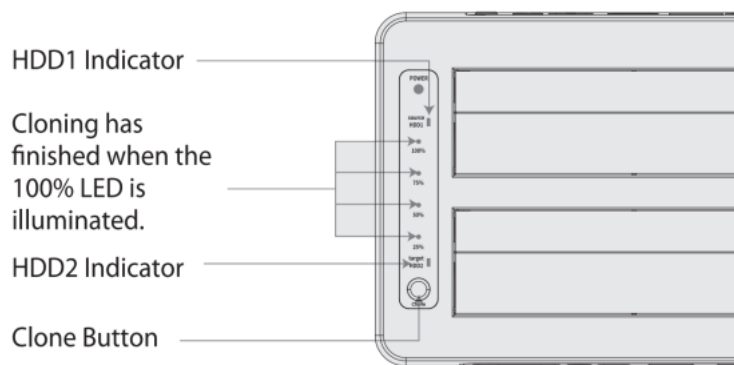
Offline cloning:

3.1 Insert the source drive into slot HDD1 and the target drive into slot HDD2, and connect the power cable to the docking station. Do NOT connect the USB cable to the computer.

Note: The capacity of the target drive must be the same or higher than the capacity of the source drive.

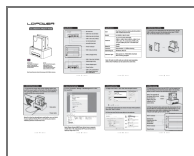


3.2 Press the power button, and press the clone button for 5-8 seconds after the corresponding drive indicators light up. The cloning process starts and is completed when the progress indicator LEDs light up from 25% to 100%.



LC-POWER™

Documents / Resources



[LC-POWER LC Dock C Multi Hub](#) [pdf] Instruction Manual
LC Dock C Multi Hub, Dock C Multi Hub, Multi Hub

References

- [User Manual](#)

[Manuals+](#), [Privacy Policy](#)

This website is an independent publication and is neither affiliated with nor endorsed by any of the trademark owners. The "Bluetooth®" word mark and logos are registered trademarks owned by Bluetooth SIG, Inc. The "Wi-Fi®" word mark and logos are registered trademarks owned by the Wi-Fi Alliance. Any use of these marks on this website does not imply any affiliation with or endorsement.