



LC-POWER LC-35U3-RAID-2 Storage Drive Enclosure Hdd User Manual

[Home](#) » [LC-POWER](#) » LC-POWER LC-35U3-RAID-2 Storage Drive Enclosure Hdd User Manual 

LC-POWER User Manual LC-35U3-RAID-2 Enclosure

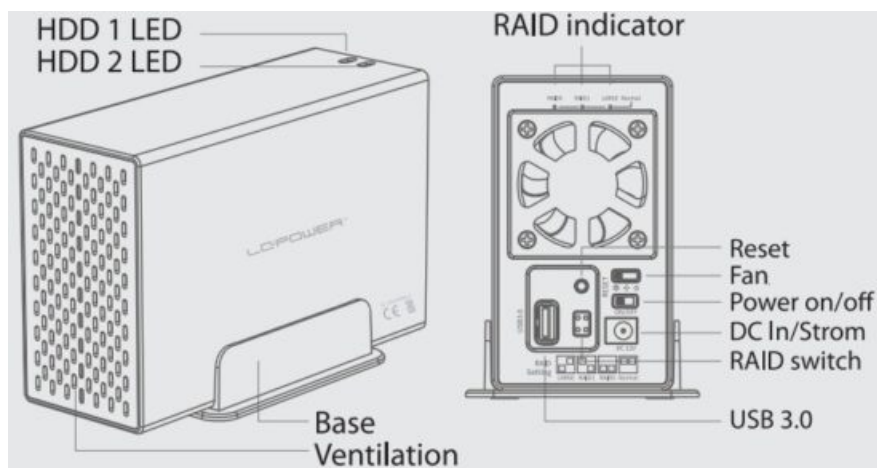


Contents

- [1 Description](#)
- [2 Installation](#)
- [3 RAID Setting](#)
- [4 New HDD formatting](#)
- [5 Documents / Resources](#)
 - [5.1 References](#)

Description

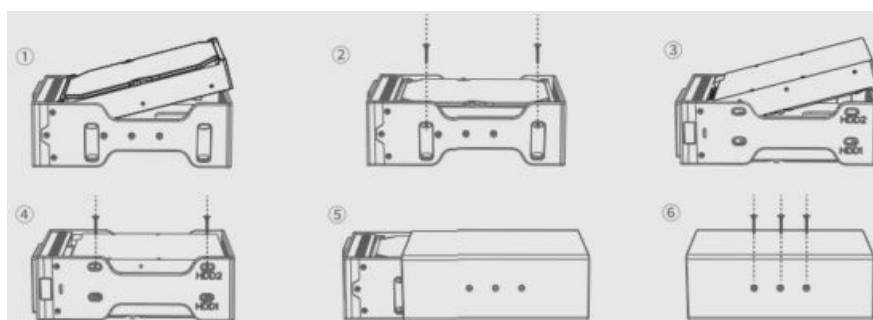
LC-35U3-RAID-2



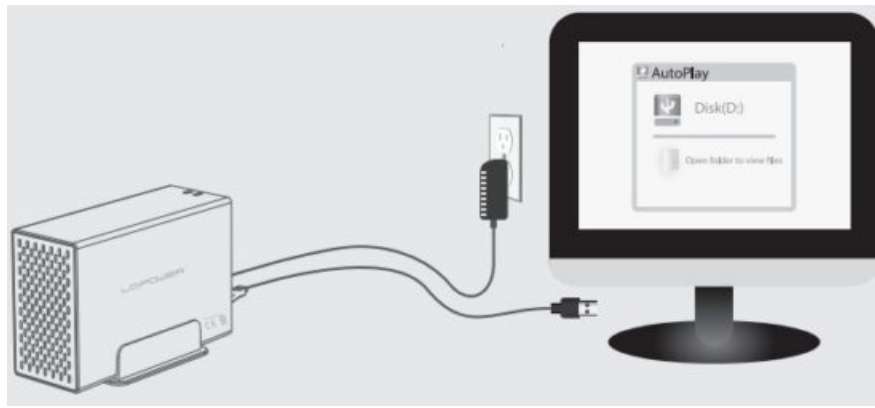
Model:	Dual bay HDD RAID enclosure
Interface int.:	SATA
Interface ext.:	USB 3.0
HDD size:	3,5"
Speed:	5 Gb/s
Material:	Aluminium alloy/plastic, Aluminiumlegierung/Plastik
Dim./MaBe:	179 x 113 x65 mm
OS:	Windows 7/8/10, Mac OS 10.0 or higher
RAID:	RAID 0, 1, Large, Normal

Installation

- Slide the middle bracket out of the aluminium housing. Mount HDD 1 (45 degrees angle) (1) and fix it with two screws (2). Repeat the same for HDD 2 (3, 4). Slide the middle bracket back into the housing (5) and fix it with three screws (6).



- Connect the power adapter. When the HDD LEDs are illuminated, you can set the desired RAID mode. Connect the enclosure to your PC.

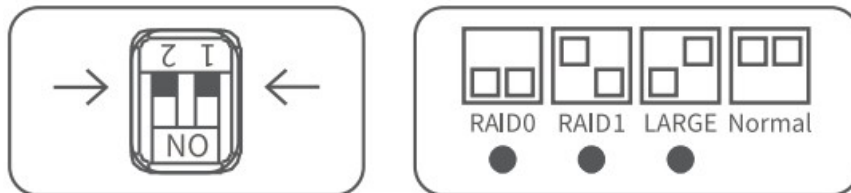


Note: If you use new HDDs, please initialize and format them in the disk management area of your operating system.

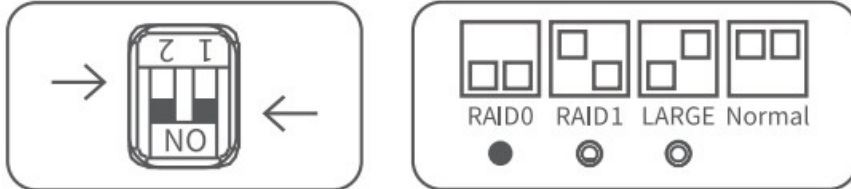
RAID Setting

Note: Please use a thin tool to carefully change the RAID switch settings.

Normal: The default mode is "Normal". If you can't find the disk in your computer, press the "Reset" button for a few seconds until the "Normal" LED is illuminated.



RAID 0: Change the RAID switch according to the sketch below. Press the "Reset" button for a few seconds until the "RAID0" LED is illuminated.



Note: If one HDD is damaged and needs to be replaced, make sure that the HDD is new or has not been formatted in a RAID mode before.

RAID Setting

RAID 1: Change the RAID switch according to the sketch below. Press the "Reset" button for a few seconds until the "RAID1" LED is illuminated.



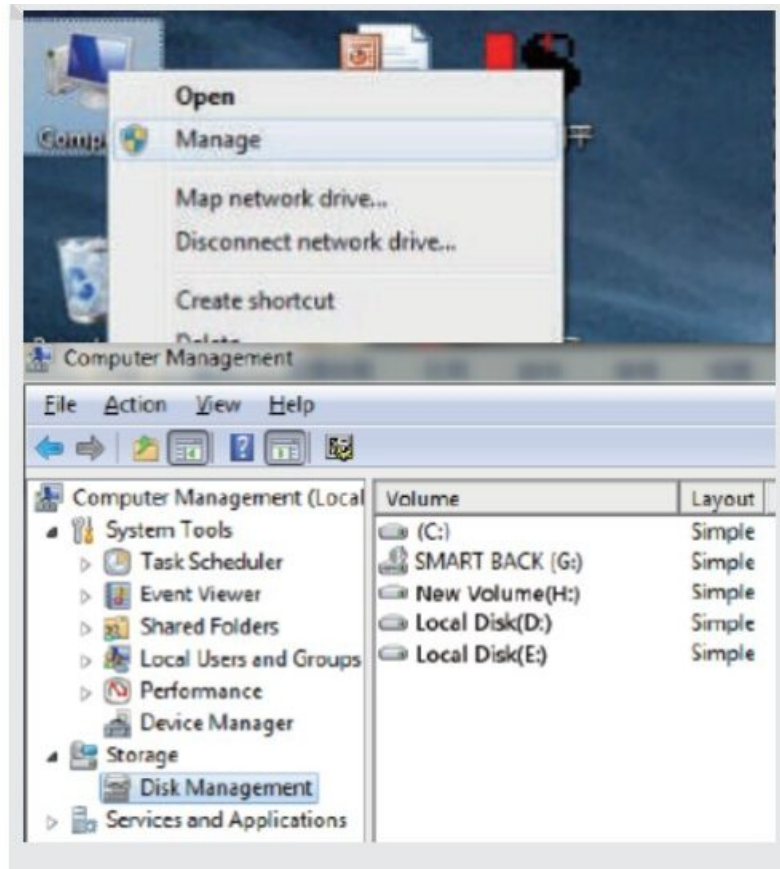
LARGE: Change the RAID switch according to the sketch below. Press the "Reset" button for a few seconds until the "LARGE" LED is illuminated.



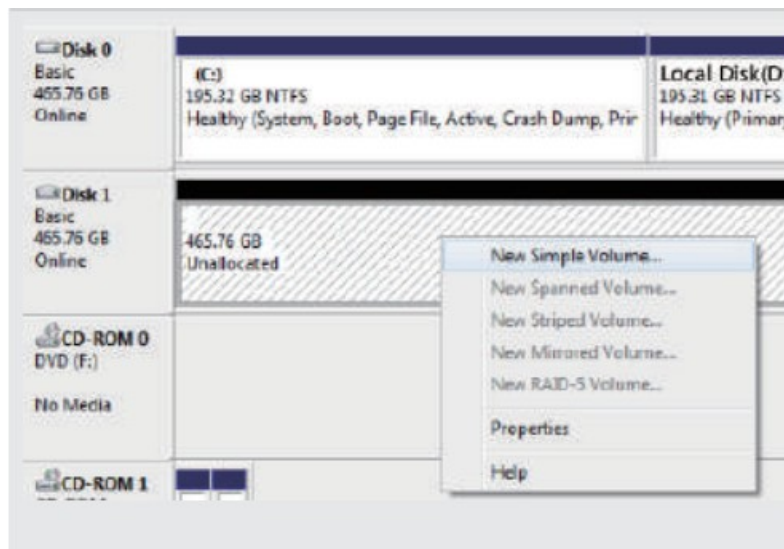
Note: Use the fan switch on the back of the enclosure to change the fan speed: Fast/Slow/Off. We recommend to use the fan to improve the heat dissipation of the HDDs. This will increase the lifespan of your HDDs.

New HDD formatting

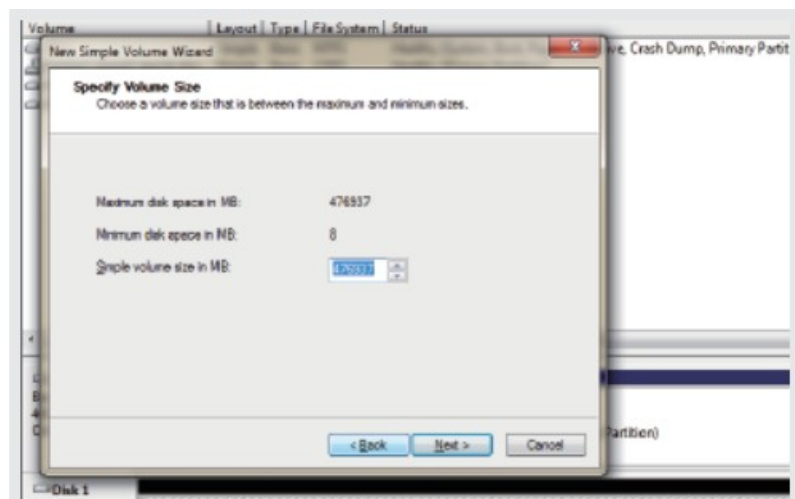
1. Go to “Computer – Manage – Disk management”.



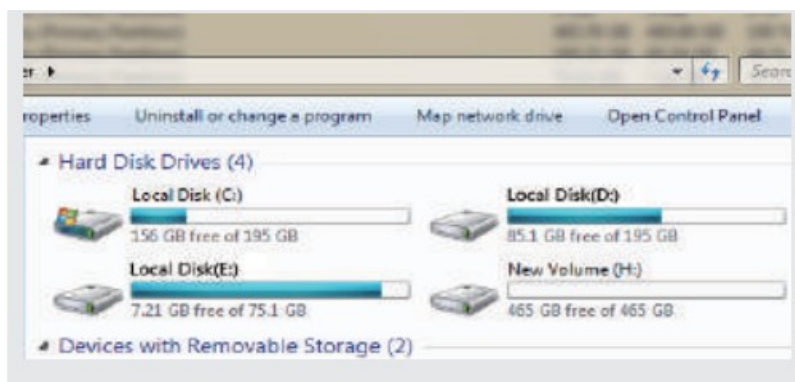
2. Right-click the unallocated disk, then click “New Simple Volume”.



3. Choose the size of the new partition and click “Next” to finish.

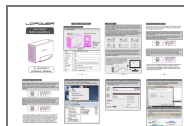


4. Now you can find the new M.2 in the “Explorer”, it’s ready to use.



LC-POWER

Documents / Resources



[LC-POWER LC-35U3-RAID-2 Storage Drive Enclosure Hdd \[pdf\] User Manual](#)
 LC-35U3-RAID-2 Storage Drive Enclosure Hdd, LC-35U3-RAID-2, Storage Drive Enclosure Hdd
 , Enclosure Hdd, Hdd

References

- [User Manual](#)

[Manuals+.](#) [Privacy Policy](#)

This website is an independent publication and is neither affiliated with nor endorsed by any of the trademark owners. The "Bluetooth®" word mark and logos are registered trademarks owned by Bluetooth SIG, Inc. The "Wi-Fi®" word mark and logos are registered trademarks owned by the Wi-Fi Alliance. Any use of these marks on this website does not imply any affiliation with or endorsement.