



# LAZYBOY Wireless Remote Control User Guide

[Home](#) » [LAZYBOY](#) » LAZYBOY Wireless Remote Control User Guide

## Contents [ [hide](#) ]

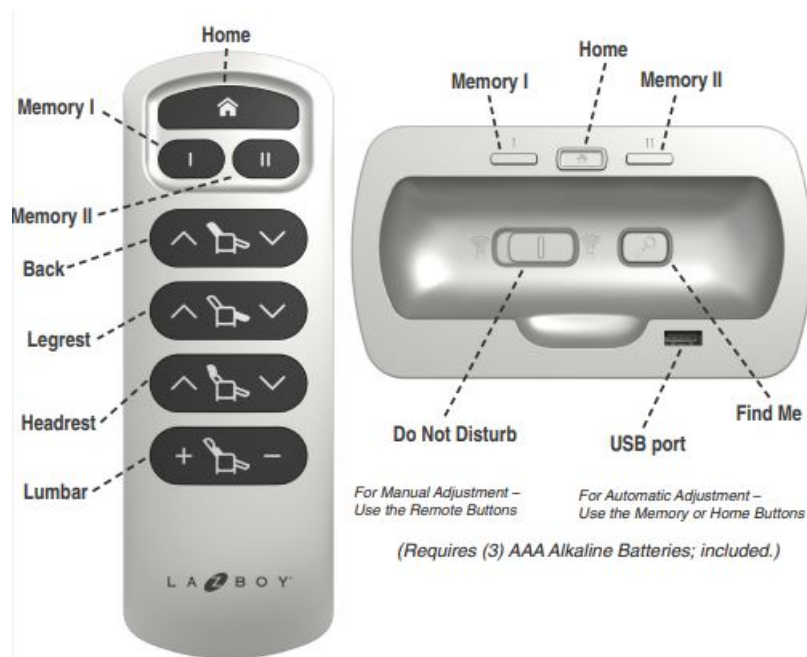
- [1 LAZYBOY Wireless Remote Control](#)
- [2 Wireless Remote](#)
- [3 Programming Memory I or Memory II](#)
- [4 Memory & Home Features](#)
- [5 Documents / Resources](#)
- [6 Related Posts](#)



## LAZYBOY Wireless Remote Control



## Wireless Remote



### Remote:

- Press LEFT side of button (arrow UP/+) and hold = RECLINE/ EXTEND
- Press RIGHT side of button (arrow DOWN/-) and hold = UPRIGHT/ RETRACT

### Remote or Cradle:

- Press a Memory button and release\* = Move to STORED SETTING (\*pressing and holding stores the setting)
- Press the Home button and release = Move to retracted and CLOSED POSITION

## Programming Memory I or Memory II

(not available on 9V battery backup)

1. Press and hold the Memory I or Memory II button for three (or more) seconds on either the remote or cradle when in the desired recline position.
2. Listen for the “beep” and watch for the LED lights to flash to indicate the setting was saved in memory.
  - Memory I plays a single beep and LED flashes once when the save is successful
  - Memory II plays a double beep and LED flashes twice when the save is successful
  - Three quick beeps and flashes of LED lights indicate an unsuccessful save.

Unless intended, DO NOT press any button on the remote or cradle while the furniture is in motion using Memory I or Memory II. Doing so interrupts the program and stops the furniture from moving. Another press of the Memory button is required to start the furniture in motion again.

### Home Button:

The Home button returns the back is to its fully upright position and the legrest, headrest and lumbar to the fully retracted and closed position.

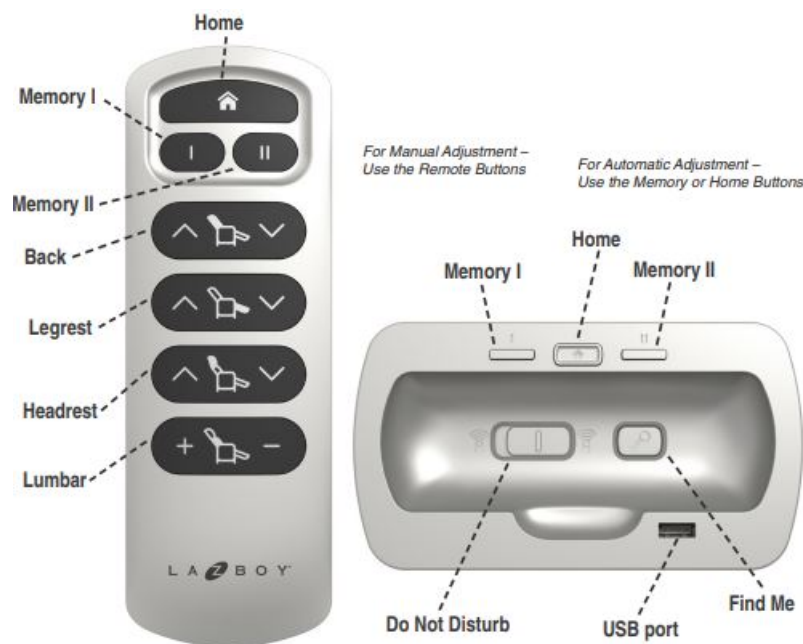
1. Press and release the Home button to return the furniture to the upright and retracted position.

Unless intended, DO NOT press any button on the remote or cradle while the furniture is in motion using Home. Doing so interrupts the program and stops the furniture from moving. Another press of the Home button is required to start the furniture in motion again.

## Memory & Home Features

### (automatic drive):

Start the automatic Memory and Home drive features from either a remote OR cradle button press. Another button press on either the remote or cradle stops the furniture from moving. Motion does not resume when the button is released.



### Cradle:

- Slide Do Not Disturb button to the RIGHT = ON for BLOCK the REMOTE
- Slide Do Not Disturb button to the LEFT = OFF for UNBLOCK the REMOTE
- Press the Find Me button and release\* = LOCATE the REMOTE (\*regardless of Do Not Disturb On or Off)

### USB Charging Port:

Plug the USB cable of a small portable electronic device into the USB charging port.

### Do Not Disturb (DND):

1. Turning on this feature blocks the furniture's communication with the remote.
2. Only the commands on the cradle are allowed when Do Not Disturb is on—these commands are Memory I, Memory II, Home and Find Me. The cradle commands are always active.

DND set to Block (On): Turning on DND while the furniture is in motion from a Memory or Home button press on the remote, stops all motion. The furniture's communication with the remote is immediately blocked when DND

turned on. If the Memory or Home drive was started by a cradle button press, the motion continues—DND has no affect on the cradle commands.

**Find Me:** Always enabled, even when Do Not Disturb ON. Locate a misplaced or lost remote with the help of this feature.

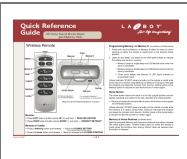
1. Press and release the Find Me button and a signal is transmitted to the remote. Press and release it a 2nd time within 2 minutes of the 1st press to clear the Find Me mode.
2. LED lights flash and a loud tone plays from the remote when the signal is received. (And 3 working AAA batteries installed in remote.)

This continues for 2 minutes OR until a button is pressed on the remote OR a 2nd Find Me cradle button press within 2 minutes of 1st. NO movement is produced by a remote button press when in Find Me mode; a button press ONLY clears the Find Me mode.

### USB Charging Port:

USB port charges small portable electronic devices. The USB port is for charging only and does not save or transfer data. Port is off when system reads < 22 volts, e.g. system operating on (2) 9-volt batteries or when the system experiences an over-current (operating capacity exceeded)

## Documents / Resources

	<p><a href="#">LAZYBOY Wireless Remote Control</a> [pdf] User Guide Wireless Remote Control, Wireless Remote, Remote, Remote Control, Control</p>
--	---