



LAZER CANCCR-LZR Can-Bus Contactless Reader Instructions

[Home](#) » [LAZER](#) » LAZER CANCCR-LZR Can-Bus Contactless Reader Instructions 



CANCER-LZR Can-Bus Contactless Reader Instructions



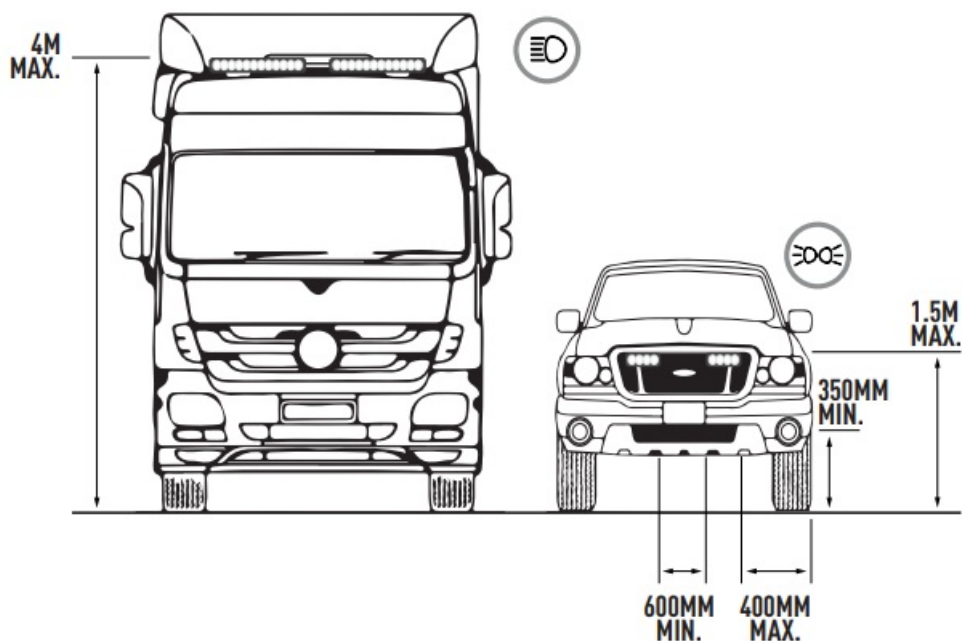
TRIPLE-R WITH BEACON INSTRUCTIONS



Contents

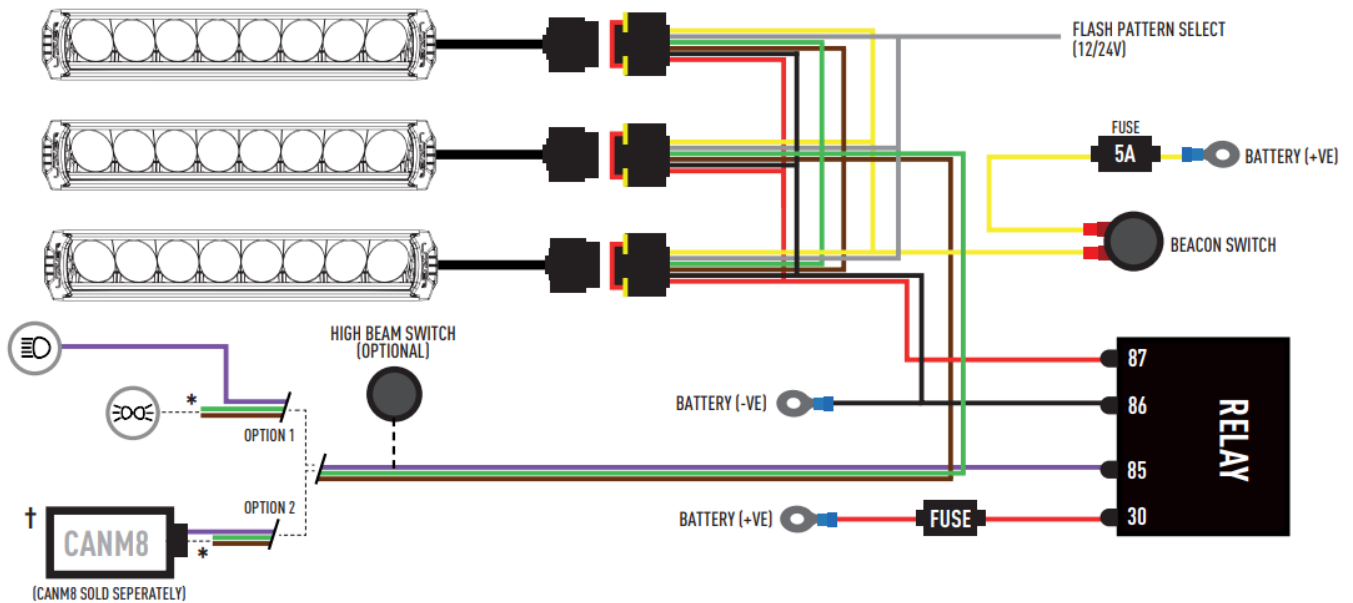
- [1 FITTING INSTRUCTIONS](#)
- [2 ELECTRICAL CONNECTION](#)
- [3 CANBUS INTEGRATION](#)
- [4 WIRING INFORMATION](#)
- [5 Documents / Resources](#)
- [6 Related Posts](#)

FITTING INSTRUCTIONS



Lamps with integrated Position lights may need to be positioned according to the above sketch. If an additional pair of position lights is not permitted (e.g. in Switzerland, or Austria), the position light should be disconnected. The legal regulations in individual countries must be observed.

ELECTRICAL CONNECTION



FUSE: Please refer to the light(s) product technical specification for the Fuse size.

RELAY: Triple-R Beacon is compatible with 10-32V vehicles.

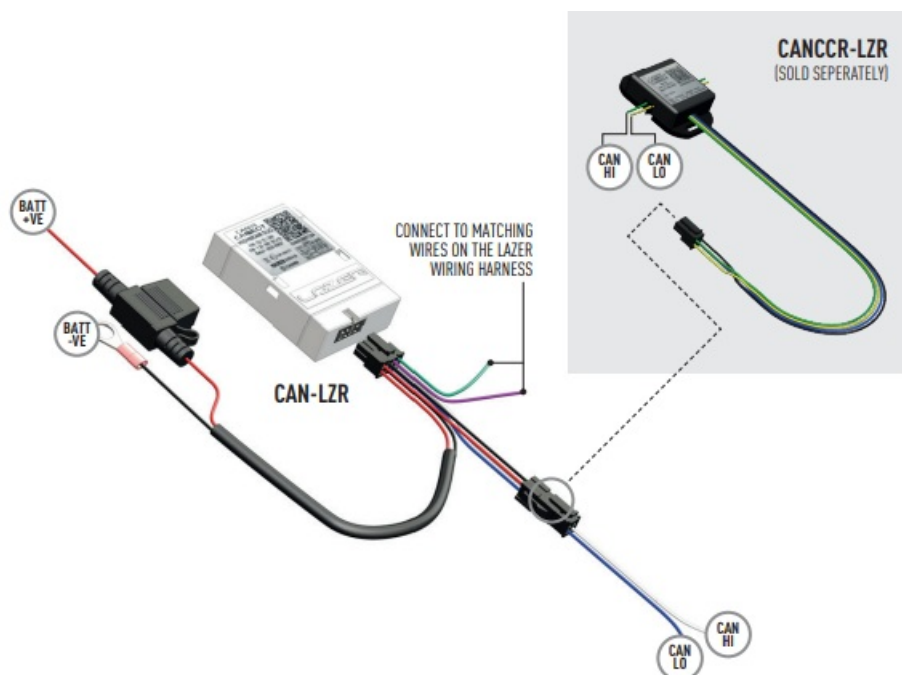
FLASH PATTERN SELECT:

Apply 12/24V signal to the grey wire for >1s to change the flash pattern. When syncing more than one lamp, apply voltage to grey wire for >3s.

*POSITION LIGHT: Select white or amber position light at the time of installation.

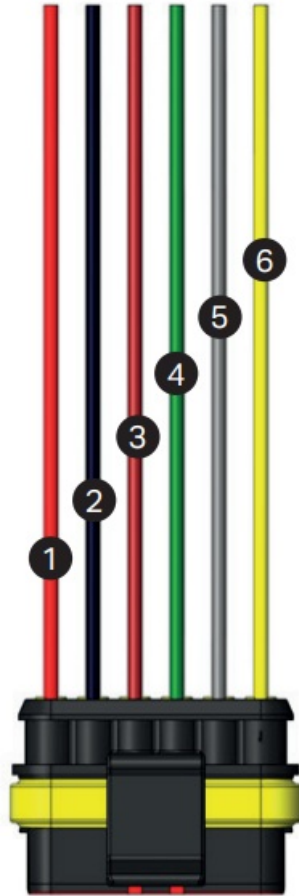
CANBUS INTEGRATION

For vehicles where it is not possible to locate a 12V high beam signal, it will be necessary to take the high beam signal from the vehicle's CAN system. For vehicle-specific CAN instructions, please download the "CANM8 Connect" App.



WIRING INFORMATION

1. RED WIRE – POSITIVE
2. BLACK WIRE – NEGATIVE
3. BROWN WIRE AMBER POSITION LIGHT
4. GREEN WIRE – WHITE POSITION LIGHT
5. GREY WIRE – SYNC & FLASH POWER
6. YELLOW WIRE – BEACON POWER



SIDE MOUNTING INFORMATION





T +44 (0) 1992 677374

E sales@lazerlamps.com

Lazer Lamps Ltd, Units 1-2, Harlow Mill Business Centre
Riverway, Harlow, Essex CM20 2FD, United Kingdom



MADE IN THE UK

/LAZERLAMPS

Documents / Resources



[LAZER CANCCR-LZR Can-Bus Contactless Reader](#) [pdf] Instructions

CANCCR-LZR Can-Bus Contactless Reader, CANCCR-LZR, Can-Bus Contactless Reader, Contactless Reader, Reader

[Manuals+](#).