



LAVAZZA MAX Primo Utilizzo First Use User Guide

[Home](#) » [LAVAZZA](#) » LAVAZZA MAX Primo Utilizzo First Use User Guide 

Contents

- [1 LAVAZZA MAX First Use](#)
- [2 FIRST USE](#)
- [3 DAILY USE](#)
- [4 DESCALING PROCEDURE](#)
- [5 Documents / Resources](#)
 - [5.1 References](#)
- [6 Related Posts](#)

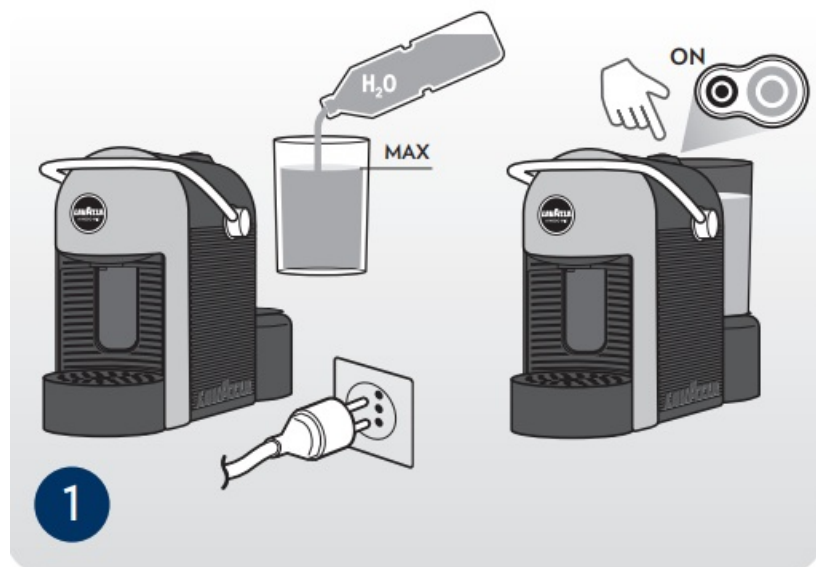
LAVAZZA

LAVAZZA MAX First Use

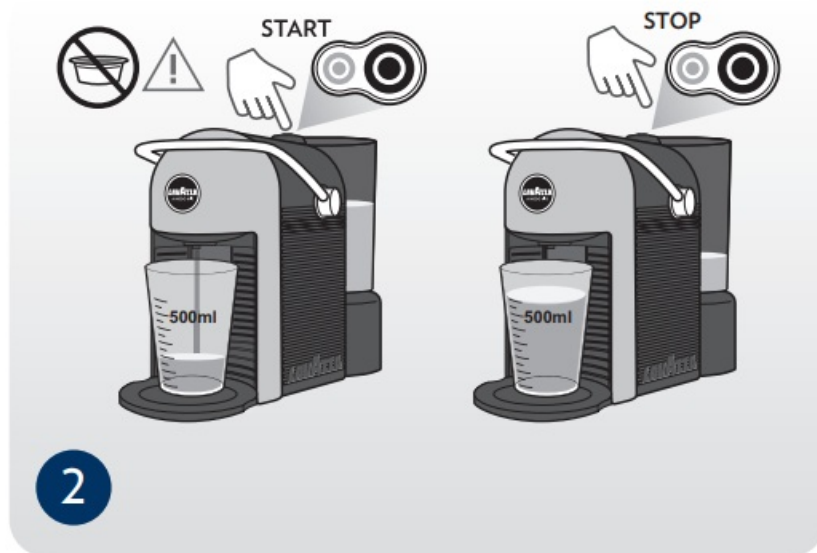


FIRST USE

Rinse the water tank, and fill it up to the MAX level indicated. Fit the supply plug into the power outlet. Press the button to switch the machine on and wait until the button remains ON to a steady white light.



Press the indicated button to start delivering. Repeat the operation until the entire contents of the tank are emptied.

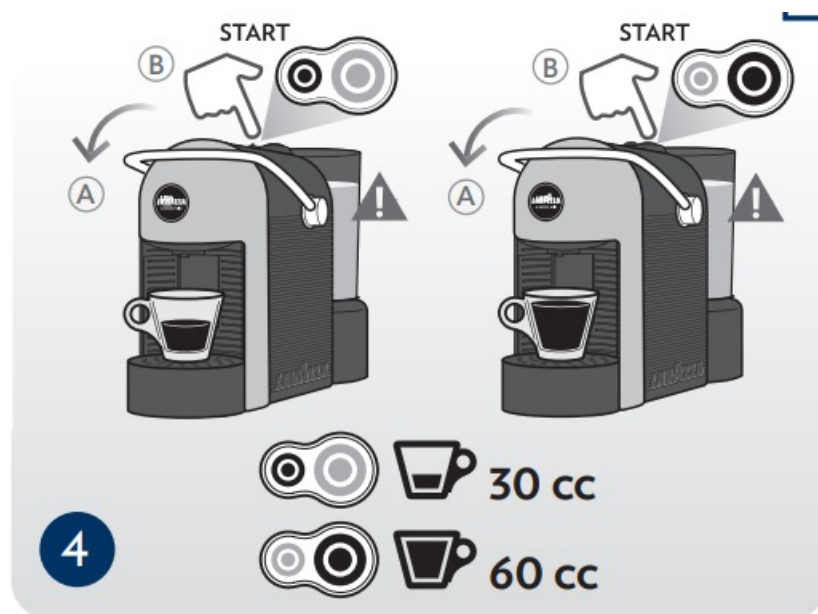


Do not use the first delivered water. Press the two buttons simultaneously and hold them down for at least 3 seconds to switch the machine off or wait 2 minutes for the automatic off-mode.

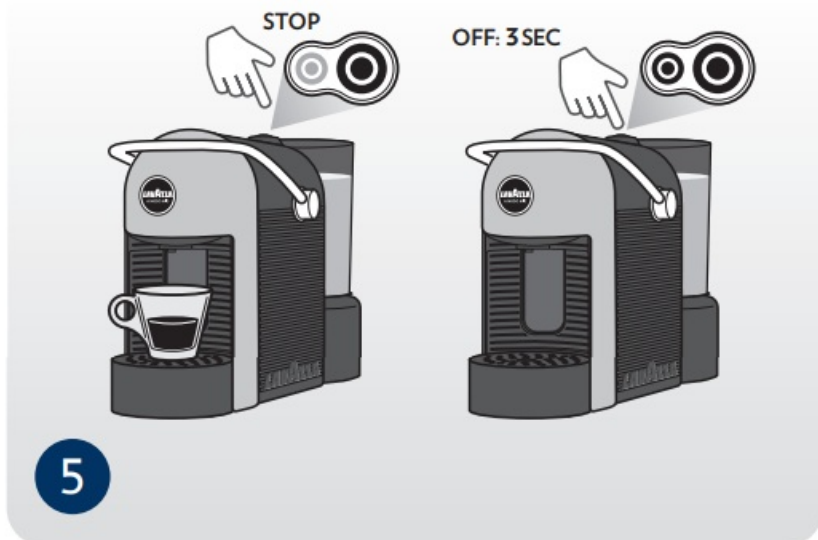


DAILY USE

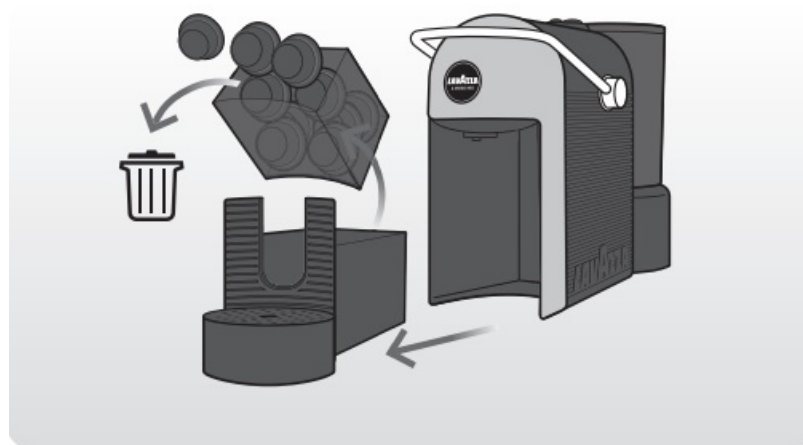
Make sure that the tank is filled up. Raise the capsule loading lever, insert the capsule, and lower the lever. Select the supply you prefer from the two available.



Wait for the supply to end. Keep the button pressed down for at least 3 seconds to switch off.



The used pod collecting drawer has transparent windows that allow you to see how full the drawer is. If the LEDs flash faster, empty the capsule drawer and reset by pressing the ON/OFF button.

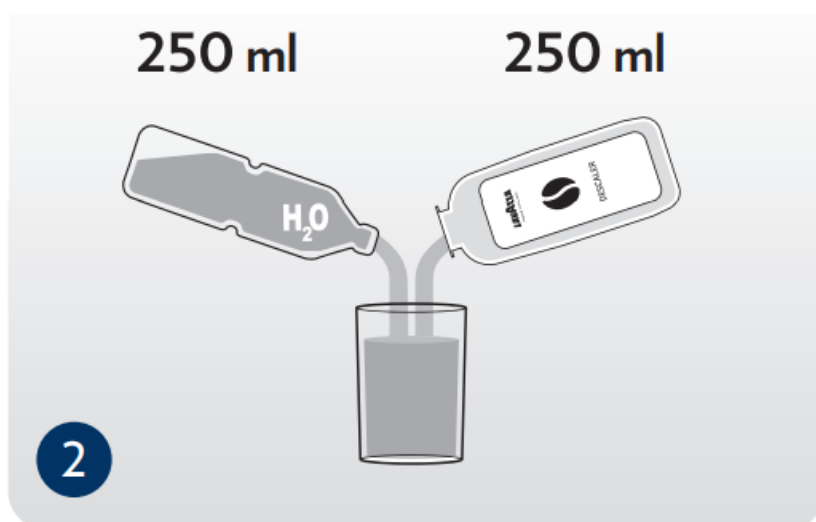


DESCALING PROCEDURE

Descaling will be required every 2-3 months of machine use and/or when the supply turns out to be difficult owing to a water flow reduction and/or when coffee is not hot enough.



Fill the tank with the LAVAZZA DESCALING agent 8.4 fl oz (250 ml) and water 8.4 fl oz (250 ml). Do not insert the capsule!



Deliver 1 cupful of descaling solution (2.1 fl oz/0,60 L), then wait approximately 30-35 seconds. Empty the container used to collect the solution. Repeat until the water tank is empty



Remove the tank, and rinse it with fresh drinking water.

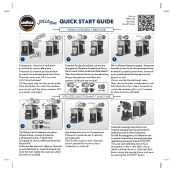


Fill the tank to MAX level with fresh drinking water and place it back onto the machine.



Empty the container to complete the process.





[LAVAZZA MAX Primo Utilizzo First Use](#) [pdf] User Guide
MAX, 500ml, 30 cc, 60 cc, MAX Primo Utilizzo First Use, MAX, Primo Utilizzo First Use, Utilizzo First Use, First Use, Use

References

- [User Manual](#)

[Manuals+](#), [Privacy Policy](#)

This website is an independent publication and is neither affiliated with nor endorsed by any of the trademark owners. The "Bluetooth®" word mark and logos are registered trademarks owned by Bluetooth SIG, Inc. The "Wi-Fi®" word mark and logos are registered trademarks owned by the Wi-Fi Alliance. Any use of these marks on this website does not imply any affiliation with or endorsement.