



lavaudio DS601 Desktop Audio Decoder User Manual

[Home](#) » [lavaudio](#) » lavaudio DS601 Desktop Audio Decoder User Manual 

lavaudio DS601 Desktop Audio Decoder User Manual



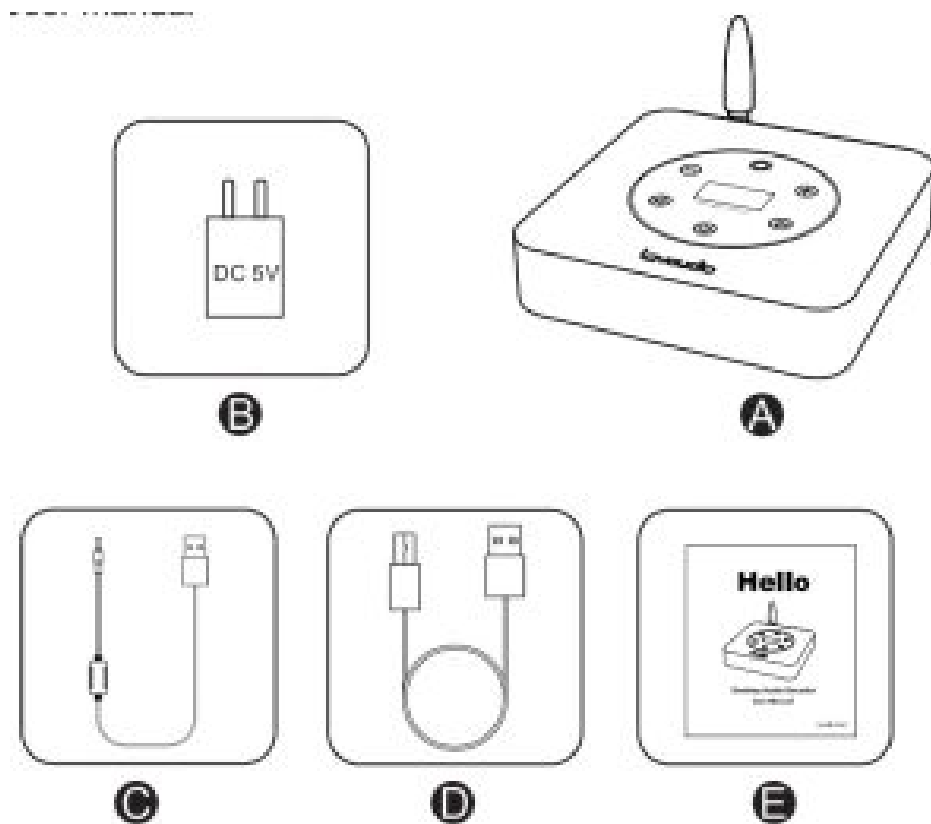
Lavaudio DS601 is a high-performance desktop DAC with USB, Coaxial, Optical, Bluetooth input and 3.5mm/RCA output. USB of DS601 supports up to PCM 32bit/768kHz and DSD512(Native). DS601 comes with complete digital volume control and OLED display, so it can serve as “DAC+Pre amplifier”. We believe that Lavaudio DS601 will bring you more HiFi music experience and fun.

Contents

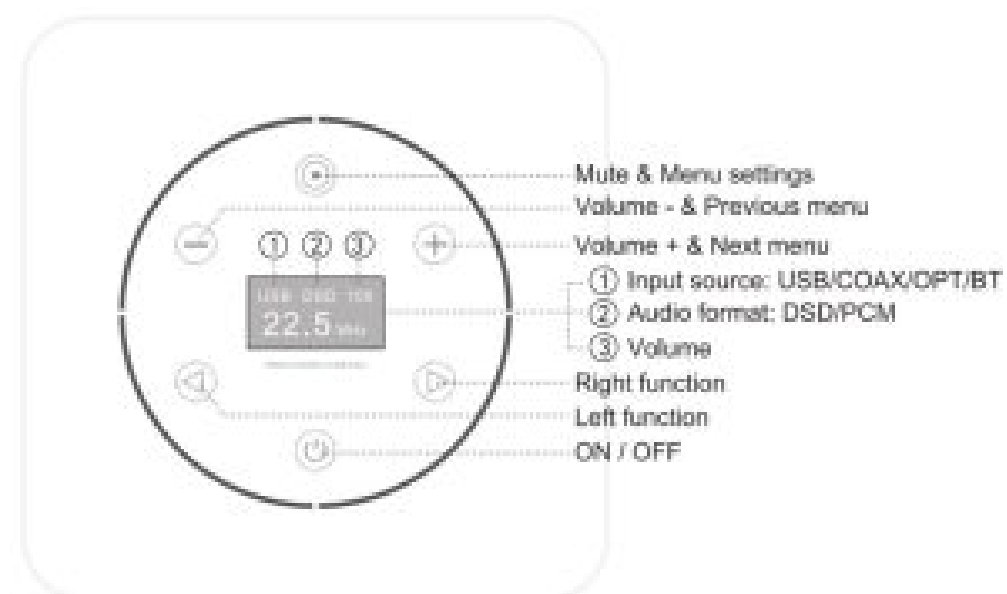
- [1 Package Contents](#)
- [2 Product Overview and Control Functions](#)
- [3 Instructions](#)
 - [3.1 Instructions for use](#)
- [4 System Setting Interface](#)
- [5 Specifications](#)
- [6 Product Parameters](#)
- [7 Troubleshooting](#)
- [8 Daily Use](#)
- [9 Documents / Resources](#)
- [10 Related Posts](#)

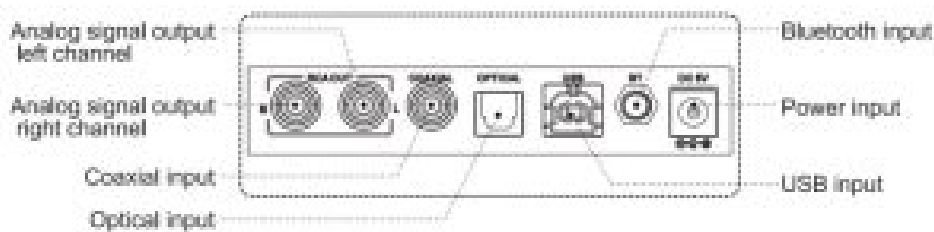
Package Contents

- A. DS601 audio DAC
- B. Power adapter(optional) x1
- C. DC power cable
- D. USB cable
- E. User manual

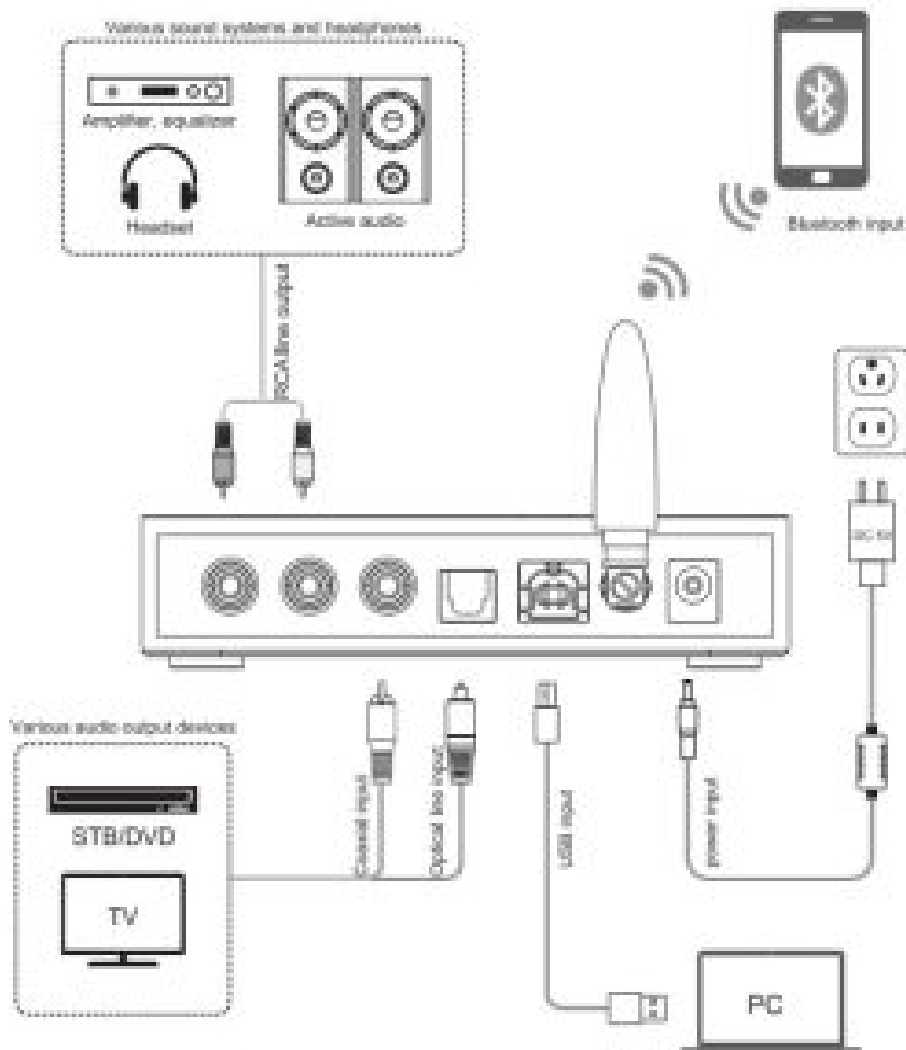


Product Overview and Control Functions





Instructions



Instructions for use

1. Plug in the DC power cable, then choose to connect DS601 with PC through the USB cable or connect with CD player through Coaxial cable.
2. The RCA OUT can connect with a headphone amplifier, a power amplifier and other device. C) Adjust a proper volume, then you can enjoy HiFi music.

Note: For Windows users, the driver need to be installed when first using. Please refer to “DS601 Driver & Installation Guide” and “DS601- Player Foobar2000 & JR”.

System Setting Interface

1. Filter mode when playing PCM format, MODE1-MODE7.

MODE 1 : apodizing fast roll-off filter

MODE 2 : linear phase fast roll-off filter

MODE 3 : linear phase slow roll-off filter

MODE 4 : minimum phase fast roll-off filter

MODE 5 : minimum phase slow roll-off filter

MODE 6 : corrected minimum phase fast roll-off filter

MODE 7 : brick wall filter



2. Bluetooth system settings



3. Screen saver settings Optional screen always on and automatic screen off



4. Factory data reset The default values of the system parameters of 1-3 are: MODE1, Bluetooth on, Automatic screen off. Note: When entering the system parameter setting interface, it will automatically exit it if there is no operation after 10 seconds.



Specifications

| | |
|---------------------------|--|
| USB input | 16bit/44.1kHz-32bit/768kHz DSD64-DSD512(Native) |
| Optical/ Coaxial input | 16bit/44.1kHz-24bit/192kHz |
| Bluetooth input | AAC/SBC/APTX/APTX LL/APTX HD/LDAC |
| Power supply | DC5V/1A |
| Size | 115x115x25mm |
| Weight | 484g |

Product Parameters

| | |
|------------------|----------------------------|
| Output Voltage | 2Vrms@OdBFS |
| THD+N | <0.0002%@1 kHz A-weighting |
| Noise | <2uVrms@A-weighting |
| Crosstalk | -112dB@1kHz |
| SNR | 122dB |
| Output Impedance | 100 |

Troubleshooting

| Troubleshooting | Cause Analysis | Solution |
|---|---------------------------------------|---|
| Noise when COAX / OP input | Signal format error or out of range | Check the input signal format |
| USB does not recognize | Incorrect USB connection | Check or replace the USB cable |
| | Computer USB port damaged | Change another interface |
| | OS problem | Reinstall the OS |
| | Driver problem | Reinstall driver |
| No sound when USB input | Computer volume is too low | Adjust volume |
| Intermittent when USB input | PC is busy and the machine is hanging | Waiting for computer recovery |
| USB input, pop sound | Software problem | Update motherboard drivers and system patches |
| If you still have problem or question, please contact us (support@ankbit.com) | | |



Daily Use

1. Never pull out the USB cable while connected to a computer and using the audio output.

2. The output signal of this machine must not be grounded or shorted.
3. Do not leave the machine in a high temperature and humid environment, let it in rain or drop it.
4. Never open the case by yourself. The machine should be repaired by 1Mii Service.
5. This machine is intended for indoor use only.

The product driver and electronic file manual can be downloaded from www.1mii.com

Documents / Resources

| | |
|---|---|
|  | <p>laval DS601 Desktop Audio Decoder [pdf] User Manual DS601, Desktop Audio Decoder, DS601 Desktop Audio Decoder, Audio Decoder</p> |
|  | <p>Laval DS601 Desktop Audio Decoder [pdf] User Manual DS601, Desktop Audio Decoder</p> |