



Lavaudio DS600 Desktop Audio Decoder User Manual

[Home](#) » [lavaudio](#) » Lavaudio DS600 Desktop Audio Decoder User Manual 

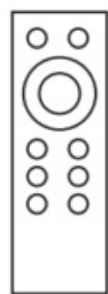
Lavaudio DS600 Desktop Audio Decoder User Manual



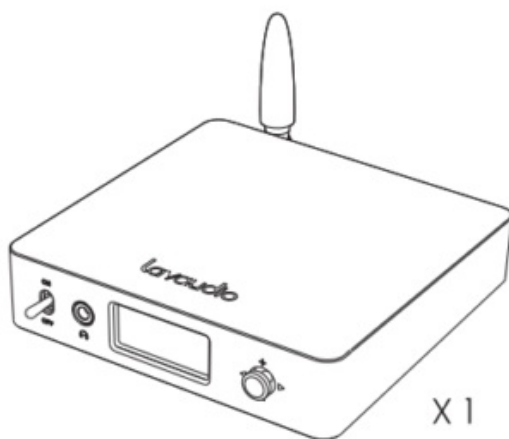
Contents

- [1 What In The Box](#)
- [2 Control Function](#)
- [3 System Setting Interface](#)
- [4 Troubleshooting](#)
- [5 Specification](#)
- [6 Product Parameter](#)
- [7 Documents / Resources](#)
- [8 Related Posts](#)

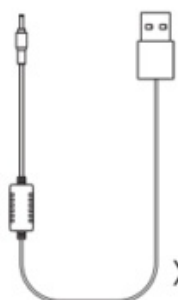
What In The Box



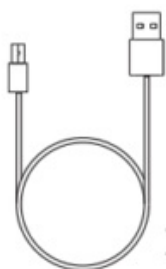
X 1



X 1



X 1



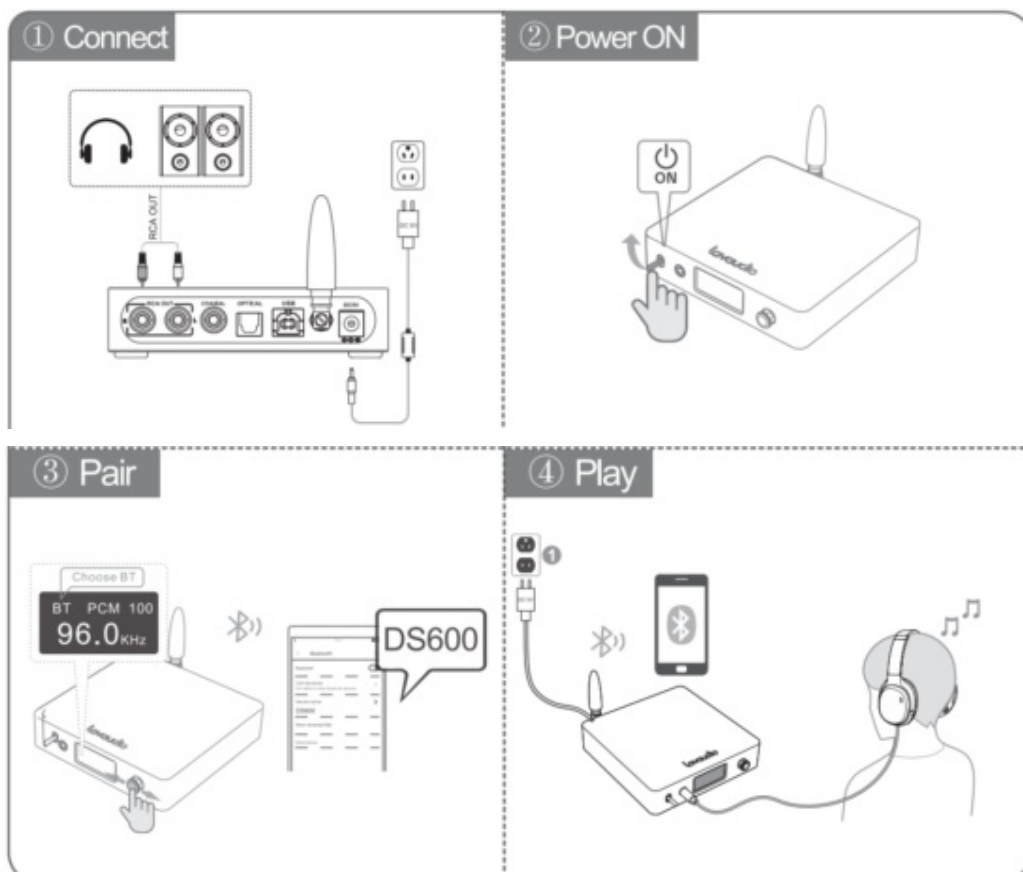
X 1



X 1

Control Function

1. Plug in the DC power cable, then choose to connect DS600 with PC through the USB cable or connect with CD player through Coaxial cable.
2. The RCA OUT can connect with a headphone amplifier, a power amplifier and other device.
3. Adjust a proper volume, then you can enjoy HiFi music.



Note: For Windows users, the driver need to be installed when first using. Please refer to “DS600 Driver & Installation Guide” and “DS600- Player Fooobar2000 & JR”.

System Setting Interface



- **Filter mode when playing PCM format**MODE1-MODE7.

MODE1 : anodizing fast roll-off filter

MODE2 : linear phase fast roll-off filter

MODE3 : linear phase slow roll-off filter

MODE4 : minimum phase fast roll-off filter

MODE5 : minimum phase slow roll-off filter

MODE6 : corrected minimum phase fast roll-off filter

MODE7 : brick wall filter

- Bluetooth system settings
- Screen saver settings (Optional screen always on or automatic screen off)
- Factory data reset(The default values of the system parameters of 1- are:MODE1,Bluetooth on, Automatic screen off.)
- Note: When entering the system parameter setting interface, it will automatically exit it if there is no operation after 10 seconds

Troubleshooting

Troubleshooting	Cause Analysis	Solution
Noise when COAX / OP input	Signal format error or out of range	Check the input signal format
USB does not recognize	Incorrect USB connection	Check or replace the USB cable
	Computer USB port damaged	Change another interface
	OS problem	Reinstall the OS
	Driver problem	Reinstall driver
No sound when USB input	Computer volume is too low	Adjust volume
Intermittent when USB input	PC is busy and the machine is hanging	Waiting for computer recovery
USB input, pop sound	Software problem	Update motherboard drivers and system patches
If you still have problem or question, please contact us (support@1mii.com)		

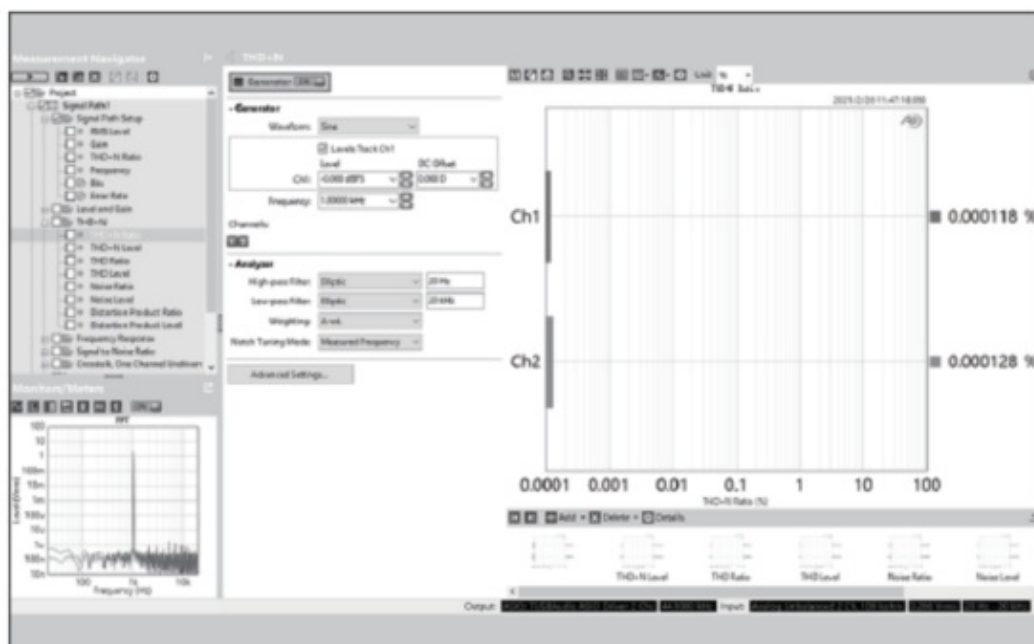
Specification

USB input	16bit/44.1kHz-32bit/768kHz DSD64-DSD512(Native)
Optical/ Coaxial input	16bit/44.1kHz-24bit/192kHz
Bluetooth input	AAC/SBC/APTX/APTX LL/APTX HD/LDAC
Power	DC5V/0.5A- 0.25W
Size	123.6x110x27.3mm
Weight	510g

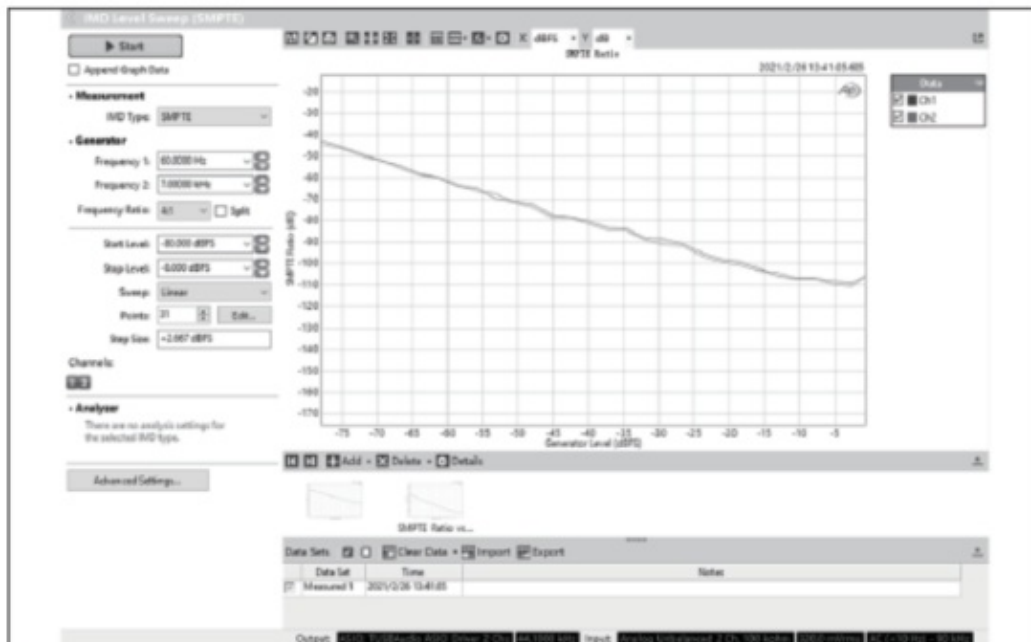
Product Parameter

Output Voltage	2.8Vrms@OdBFS
THD+N	<0.0002%/0@1 kHz A-weighting
Noise	<2uVrms@A-weighting
Crosstalk	-120dB@1 kHz
SNR	122dB (B-Weighdted)

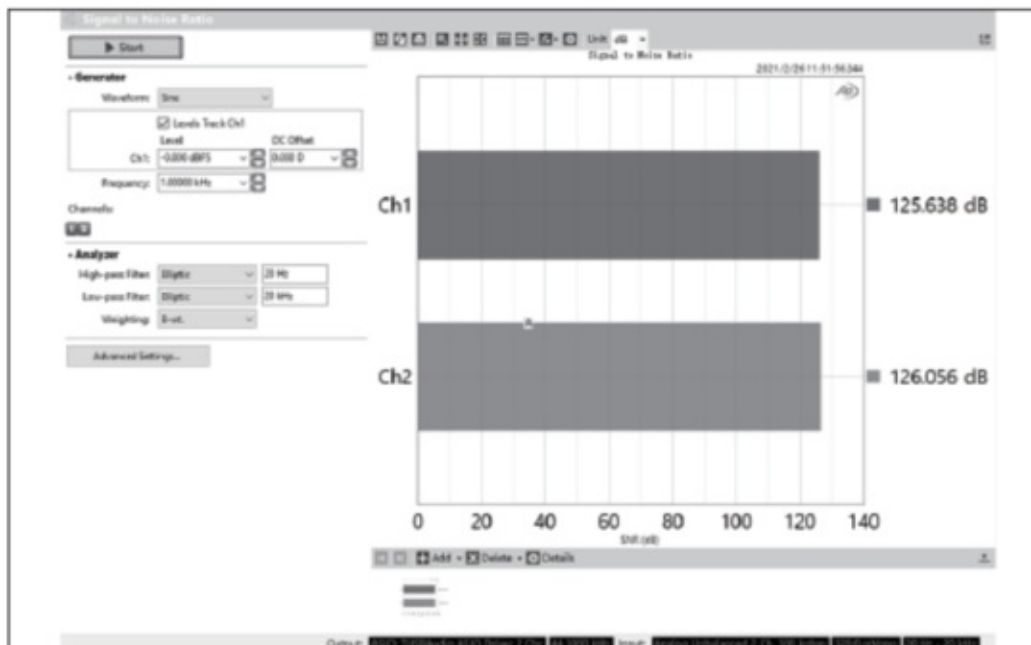
TND+N



IMD Level Sweep (SMPTE)



Signal To Noise Ratio



Scan the code to get more information



1Mii Technologies Limited

We hope you never the need, but if you do, our service is friendly and hassle-free



Support@1mii.com



[web: www.1mii.com](http://www.1mii.com)

FCC ID: 2AUFR-DS600



Documents / Resources



[Lavaudio DS600 Desktop Audio Decoder](#) [pdf] User Manual
DS600, Desktop Audio Decoder

[Manuals+.](#)