



LAUNCH X-431 ECU and TCU Programmer User Manual

[Home](#) » [Launch](#) » LAUNCH X-431 ECU and TCU Programmer User Manual 

Contents

- [1 LAUNCH X-431 ECU and TCU Programmer](#)
- [2 Product Information](#)
- [3 Product Usage Instructions](#)
- [4 Packing List](#)
- [5 Structure](#)
- [6 Operation Procedure](#)
- [7 ECU Data Read and Write](#)
- [8 Data Processing](#)
- [9 Documents / Resources](#)

LAUNCH[®]

LAUNCH X-431 ECU and TCU Programmer



Product Information

The ECU&TCU Programmer is a device used for programming and modifying the Electronic Control Unit (ECU) and Transmission Control Unit (TCU) of vehicles. It allows users to read and write data from the ECU and TCU, perform immobilizer shutoff, and perform file checkout.

Packing List:

- Main Unit
- USB Cable (Type B)
- MCU Cable V1
- Bench Mode Cable
- Switching Power Supply
- Password Envelope
- Matching Adapter A (5pcs)
- Matching Adapter B (6pcs)
- Matching Adapter C (7pcs)
- Matching Adapter D (8pcs)
- Matching Adapter E (6pcs)
- DB26 Interface 1
- DB26 Interface 2
- Power Supply Jack

- USB Type B
- Power Indicator (Red light turns on after power on)
- State Indicator (Green light flashes after power on)
- ERROR Indicator (Blue light flashes when upgrading or abnormal)

Product Usage Instructions

Download and install the software:

Download the software installation package from the provided website and install it on your computer.

Connect ECU&TCU programmer and computer:

Use a USB cable (type A to type B) to connect the ECU&TCU programmer and the computer.

Activation:

When using the ECU&TCU programmer for the first time, it will enter the activation interface. Connect the ECU&TCU programmer to the computer and scrape the coating area of the password envelope to obtain the activation code.

ECU Data Read and Write:

Get Related ECU Information:

- Click Brand->Model->Engine->ECU to select the corresponding ECU type. Alternatively, you can use the search box to enter relevant information (Brand, Bosch ID, or ECU) for inquiry.
- Click Direct Connection of Diagram to get the ECU wiring diagram.
- Refer to the wiring diagram and use the BENCH mode cable and the corresponding adapter cable to connect the ECU and ECU&TCU programmer.
- After completing the connection, click Read Chip ID to read the data.

Data Read and Write:

- Click Read EEPROM Data to backup the EEPROM data and save it.
- Click Read Flash Data to backup the FLASH data and save it.
- Click Write EEPROM Data and select the corresponding backup file to restore the EEPROM data.
- Click Write Flash Data and select the corresponding backup file to restore the FLASH data.

Immobilizer Shutoff and File Checkout:







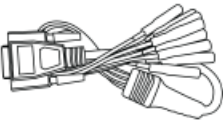





- Click Data Processing on the main interface.
- Select Immobilizer shutoff and file checkout on the popup window.
- Click EEPROM immobilizer/FLASH immobilizer, load the corresponding EEPROM/FLASH backup file as prompted by the software.
- Click EEPROM checkout/FLASH checkout, load the corresponding EEPROM/FLASH backup file as prompted

by the software.

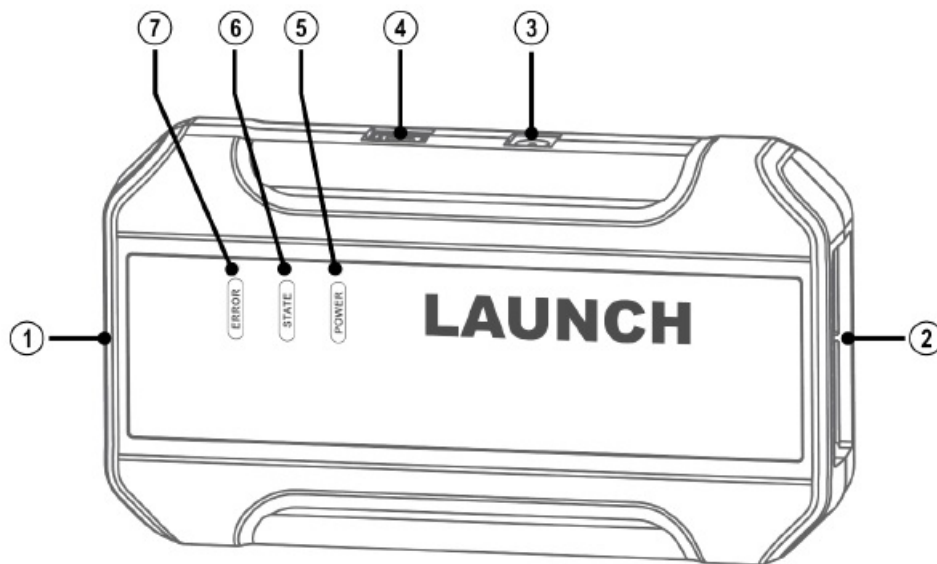
- The system will obtain the corresponding data online and save the new file to complete the immobilizer shutoff.

Note: Pictures illustrated herein are for reference purpose only. Due to continuing improvements, actual products may differ slightly from the product described herein and this material is subject to change without notice.

Packing List

Main Unit		Matching Adapter A (5Pcs)	
USB Cable (Type B)		Matching Adapter B (6Pcs)	
MCU Cable V1		Matching Adapter C (7Pcs)	
Bench Mode Cable		Matching Adapter D (8Pcs)	
Switching Power Supply		Matching Adapter E (6Pcs)	
Password Envelope		Packing List	

Structure



1. DB26 Interface
2. DB26 Interface
3. Power Supply Jack
4. USB Type B
5. Power Indicator (Red light turns on after power on)
6. State Indicator (Green light flashes after power on)
7. ERROR Indicator (Blue light flashes when upgrading or abnormal)

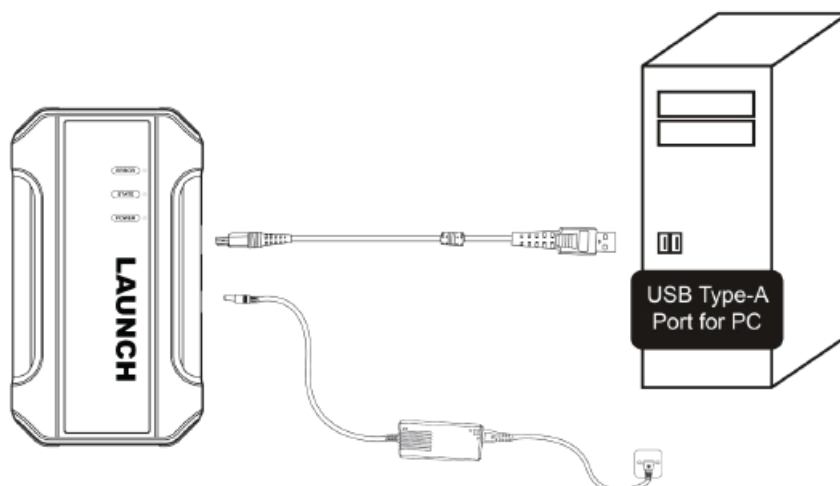
Operation Procedure

• Download and install the software

Download the software installation package through the following website and install it on the computer

• Connect ECU&TCU programmer and computer

As shown in the figure below, use a USB cable (type A to type B) to connect the ECU&TCU programmer and the computer.



• Activation

Activation

Serial Number

Activation Code

Activate

Get Related ECU Information

- Immobilizer program Search
English
14Cnbe
r

Platform
Data
Firmware upgrade
Check for updates
Log
feedback
Help

Brand
Model
Engine
ECU

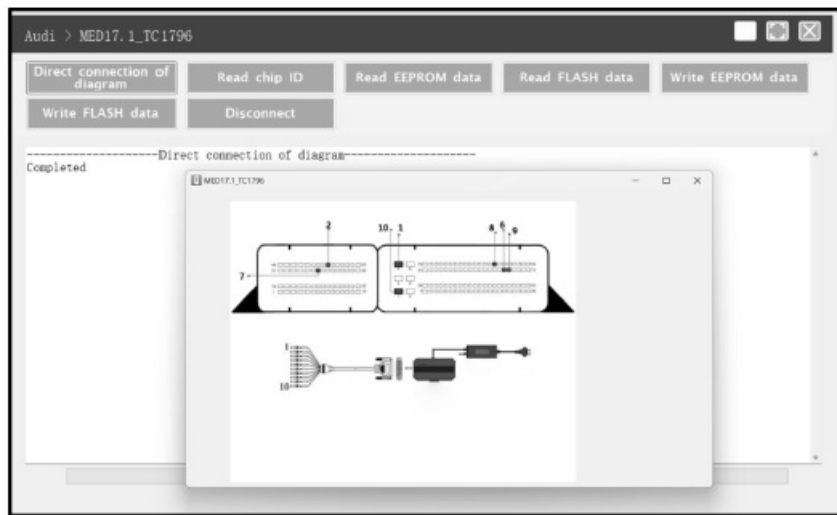
Brand	Model	Engine	ECU
Abarth	500 2008-2011	1400 T-JET 195 160	9617.3.0 Tc12940
Aebi Schmidt	500 Custom 2013-2021	312. A1.000 1400 160	
Agco	390 Competitions 2012	312. A1.000 1400 153	
Alfa Romeo	390C Turismo 2013-2021	312. A3.000 1400 146	
Alpine	Grande Punto 2007-2009	312. A3.000 1400 160	
Ariel		312. A9.000 1400 190	
Artec		312. B3.000 1400 198	
Aston Martin		312. B3.000 1400 163	
Audi			
BMW			
BORGAT			
Beic			
Bentley			
Bugatti			
Buick			
CASE			
CASE Tractors			
CF Moto			
Cadillac			
Can-Am			

version: V00.01

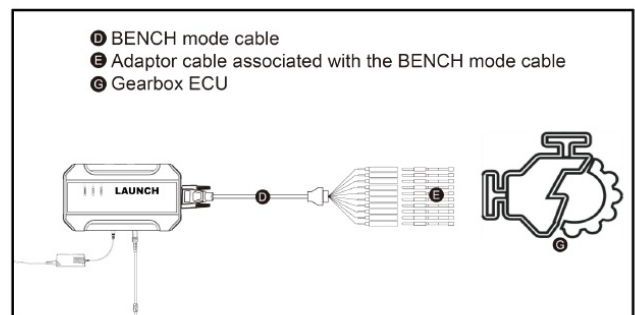
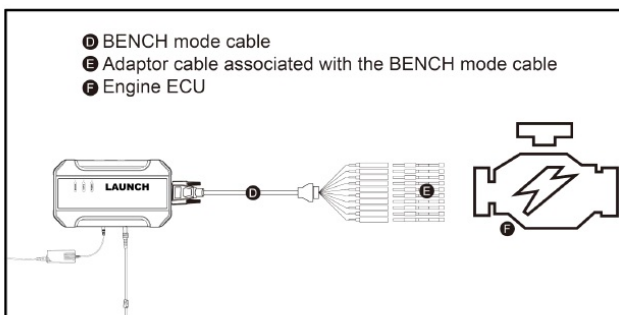
-
- Immobilizer program Search
- English
- 14314682
- Platform
- Data Processing
- Firmware upgrade
- Check for updates
- Log feedback
- Help
- Brand
- Model
- Engine
- ECU
- version:V06.01



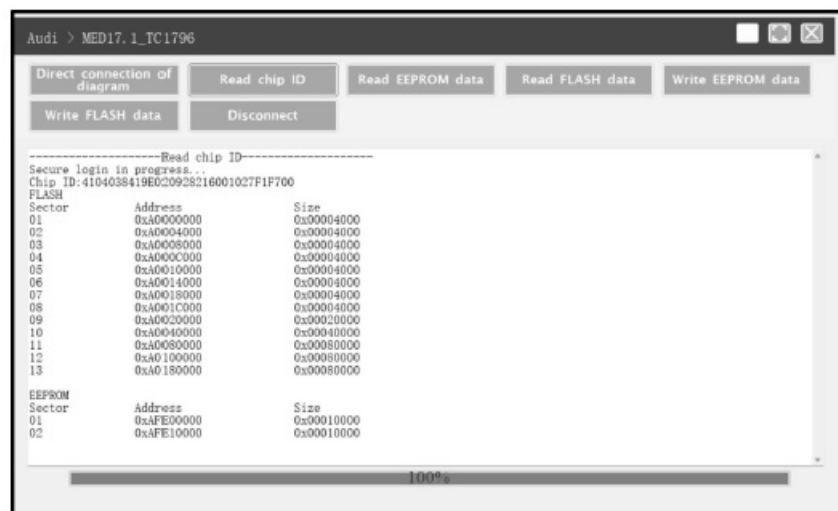
- Click Direct Connection of Diagram to get the ECU wiring diagram.



- Referring to the wiring diagram, use the BENCH mode cable and the corresponding adaptor cable to connect the ECU and ECU&TCU programmer

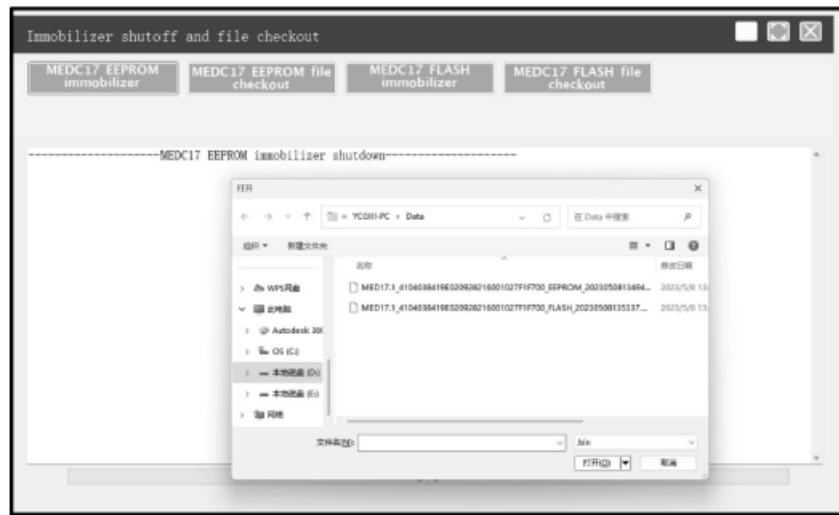


- After completing the connection, click Read Chip ID to read the data.

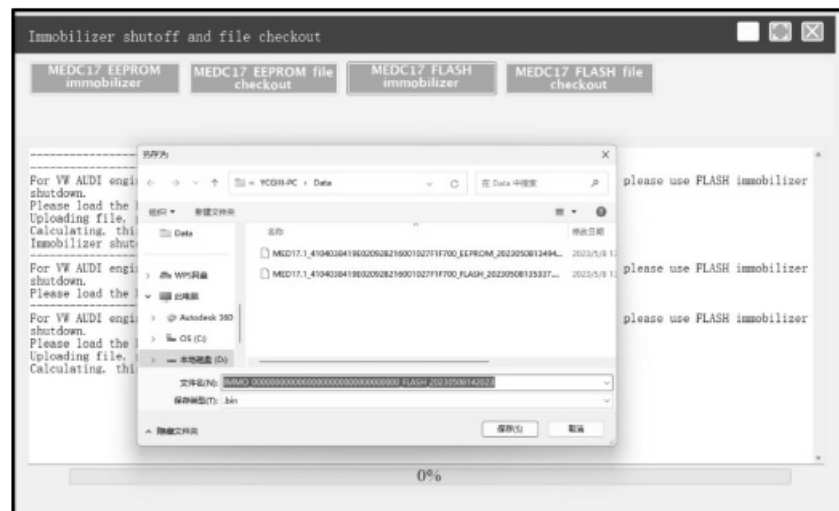


Data Read and Write

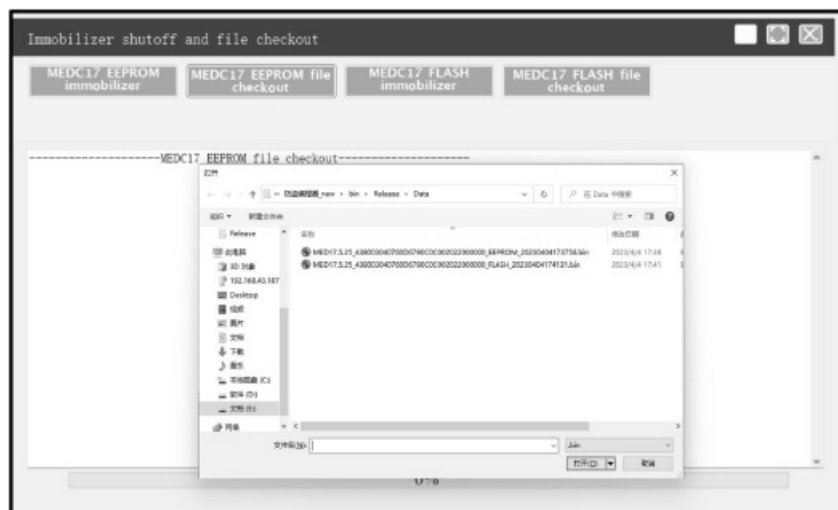
- Click Read EEPROM Data to backup the EEPROM data and save it.



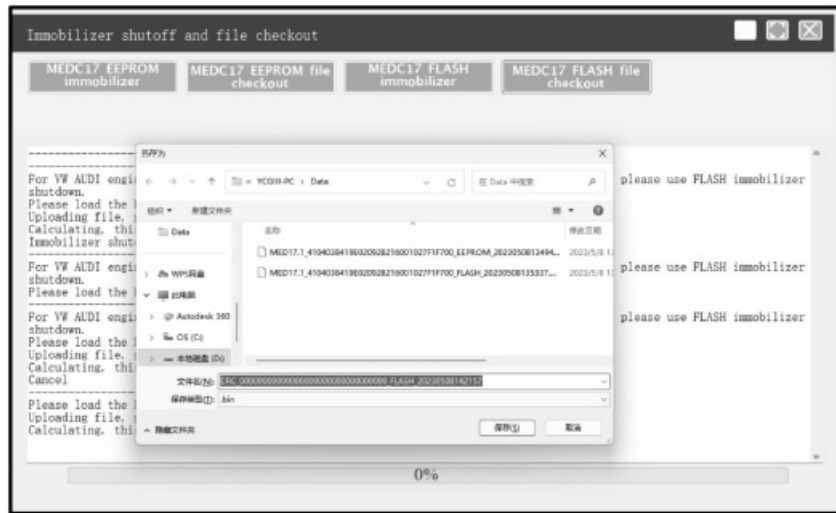
- The system will obtain the corresponding data online, and then save the new file to complete the immobilizer shutoff.



- Click EEPROM checkout/FLASH checkout, load the corresponding EEPROM/FLASH backup file as software prompts



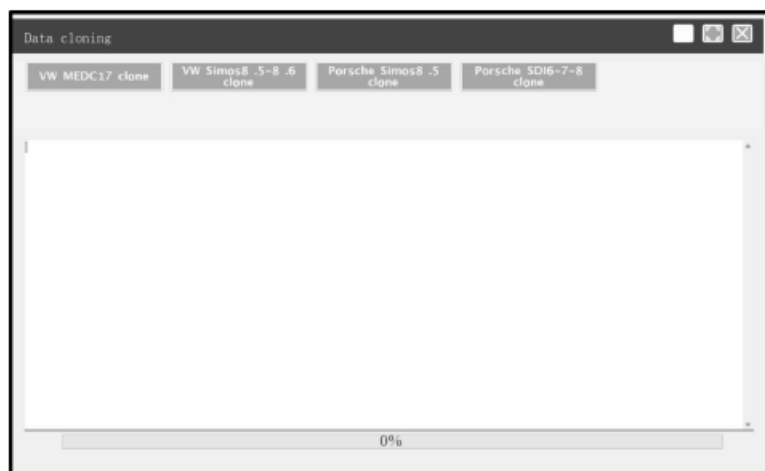
- The system will obtain the corresponding data online, and then save the new file to complete the file checkout.



Data Cloning

Note: Before performing data cloning, it is necessary to backup and save the FLASH&EEPROM data of the original ECU and the external ECU. For specific operation steps, please refer to the previous chapter. This function is mainly used for engine ECU data cloning of VW, Audi and Porsche, other models can complete data cloning by directly reading and writing data.

- Read and save the FLASH&EEPROM data of the original vehicle ECU and the external ECU.
- Click Data Processing on the main interface, and select Data Cloning in the pop-up window to enter the following interface



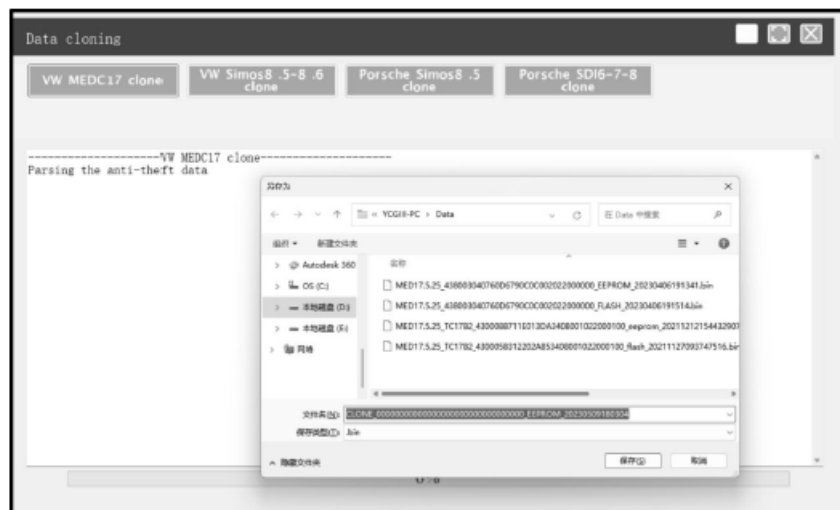
- Select the corresponding car model for data cloning. Follow the software prompts to load the FLASH & EEPROM data of the original vehicle ECU respectively



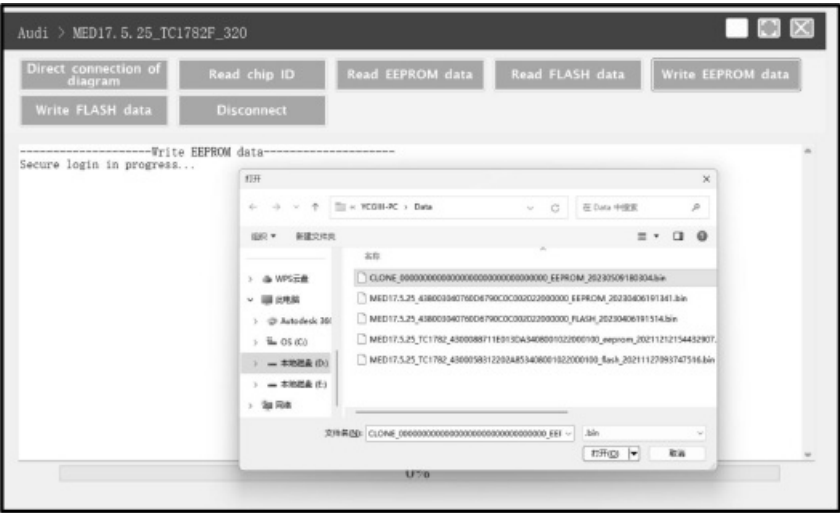
- Follow the software prompts to load the FLASH & EEPROM data of external ECU respectively.




- The system analyzes the anti-theft data and generates a clone data file, click Confirm to save it.



- Connect external ECU and ECU&TCU Programmer, write FLASH data of original ECU and saved EEPROM clone data into external ECU.



Documents / Resources

	<p>LAUNCH X-431 ECU and TCU Programmer [pdf] User Manual</p> <p>X-431 ECU and TCU Programmer, X-431, ECU and TCU Programmer, and TCU Programmer, TCU Programmer, Programmer</p>
---	---

Manuals+.