



LAUNCH X-431 Diagun V Communication Via BT Auto Obdii Diagnostic Tester User Guide

[Home](#) » [Launch](#) » LAUNCH X-431 Diagun V Communication Via BT Auto Obdii Diagnostic Tester User Guide 

Contents

- [1 LAUNCH X-431 Diagun V Communication Via BT Auto Obdii Diagnostic Tester](#)
- [2 Initial Use](#)
- [3 Introduction](#)
- [4 Start Diagnostics](#)
- [5 Documents / Resources](#)
- [6 Related Posts](#)



LAUNCH X-431 Diagun V Communication Via BT Auto Obdii Diagnostic Tester



Initial Use

Charging & Turning On

1. Connect the power adaptor to the charging port of the tool.
2. If the tool is being charged, a charging indicator displays . Once the indicator turns , charging is complete.
3. Pressing the [POWER] button will start the tool and enter the home screen.

*Note On first use of the tool, or if the tool remains idle for a long period of time, there may be insufficient battery power to start the tool. Please charge for a minimum of 5 minutes before attempting to turn it on again.

Please use the power adaptor included within the kit to charge the tool.

No responsibility can be assumed for any damage or loss caused as a result of using any power adaptor other than the one supplied

Network Setup

The tool supports WLAN connection. To enable you to surf the Internet, register App and update the diagnostic software etc, please follow the steps below to configure the network:

1. On the home screen, tap “Settings” > WLAN.
2. Slide the WLAN switch to ON, the tool starts searching for available WLAN networks.
3. Select a wireless network.

If the chosen network is open the tool will connect automatically.

If the selected network is encrypted, a network password will need to be entered.

4. When “Connected” appears, it indicates the tablet is properly connected to the Internet. *Note: when WLAN is not required this should be disabled to conserve battery power.

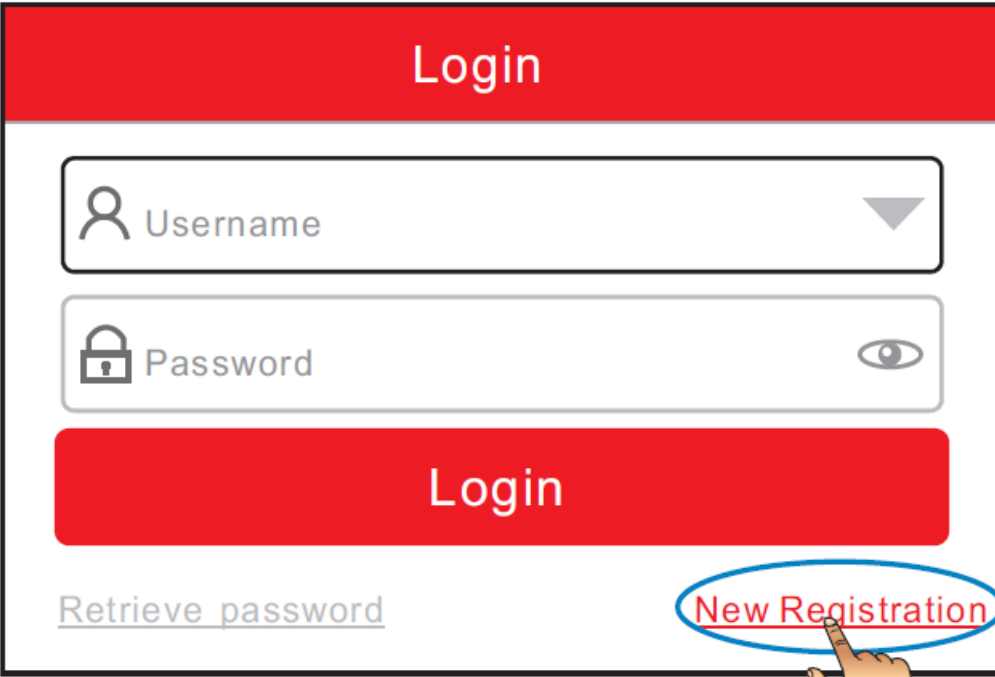
Register & Update

For initial use, you have to experience a registration process. It mainly includes the following steps:

Launch App:

Tap the application icon to launch it. Tap “Login” on the right upper corner of the screen.

- For initial use, tap “New registration” to open a sign-up page, refer to steps 2~4.
- If you have an account , tap “Login” to login directly.
- If you forgot the password password” to retrieve it.

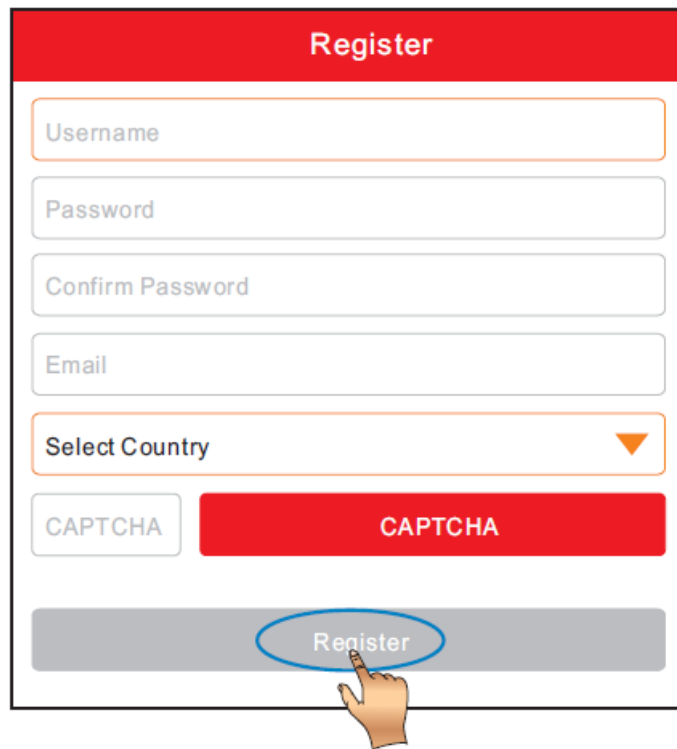


The illustration shows a mobile app login screen. At the top is a red header with the word "Login" in white. Below the header are two input fields: the first is labeled "Username" with a person icon and a dropdown arrow; the second is labeled "Password" with a lock icon and an eye icon. Below these fields is a large red button with the word "Login" in white. At the bottom left is a link that says "Retrieve password" in blue. At the bottom right is a link that says "New Registration" in red, which is circled in blue and has a hand icon pointing to it.

Create an App Account:

Fill in each field and tap “Register” to go to step 3.

***Note:** To obtain more functions and better service, please enter the real information.



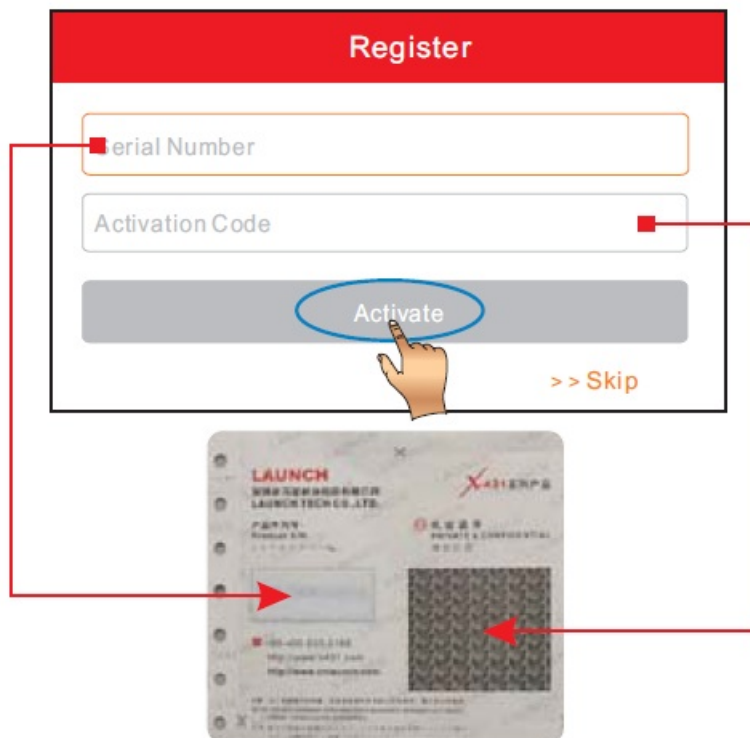
The image shows a 'Register' form with a red header. The form contains the following fields: Username, Password, Confirm Password, Email, and a 'Select Country' dropdown menu. Below these fields are two 'CAPTCHA' buttons, one in a grey box and one in a red box. At the bottom is a large grey 'Register' button, which is circled in blue with a hand icon pointing to it.

Activate VCI Connector:

Input the Product S/N and Activation Code, and then tap “Activate”.

***Note:** The Serial number (a 12-digit number starting with 98) and Activation code (a 8-digit number) are stored in the Private & Confidential sheet.

To exit and activate later, tap “Skip”. In this case, you can activate it in “Personal Center” -> “Activate Connector”.



The image shows an 'Activate' form with a red header. The form contains two input fields: 'Serial Number' and 'Activation Code'. Below these fields is a large grey 'Activate' button, which is circled in blue with a hand icon pointing to it. To the right of the button is a '>> Skip' link. Below the form is a screenshot of a product label for 'LAUNCH' with a QR code. Red arrows point from the 'Serial Number' and 'Activation Code' fields to the label, indicating where to find this information.

Update Diagnostic Software:

- Tap “Yes” to enter diagnostic software download screen.
- Tap “Update” to download and install the diagnostic software.
- To download it later, tap “No”. In this case, tap “Software Upgrade” on the Job menu to download it.

Register

Congratulations! You have successfully completed your registration. Do you want to download the diagnostic software now?

Yes

No

Introduction

There are two main components to the diagnostic system: display tablet and VCI connector.

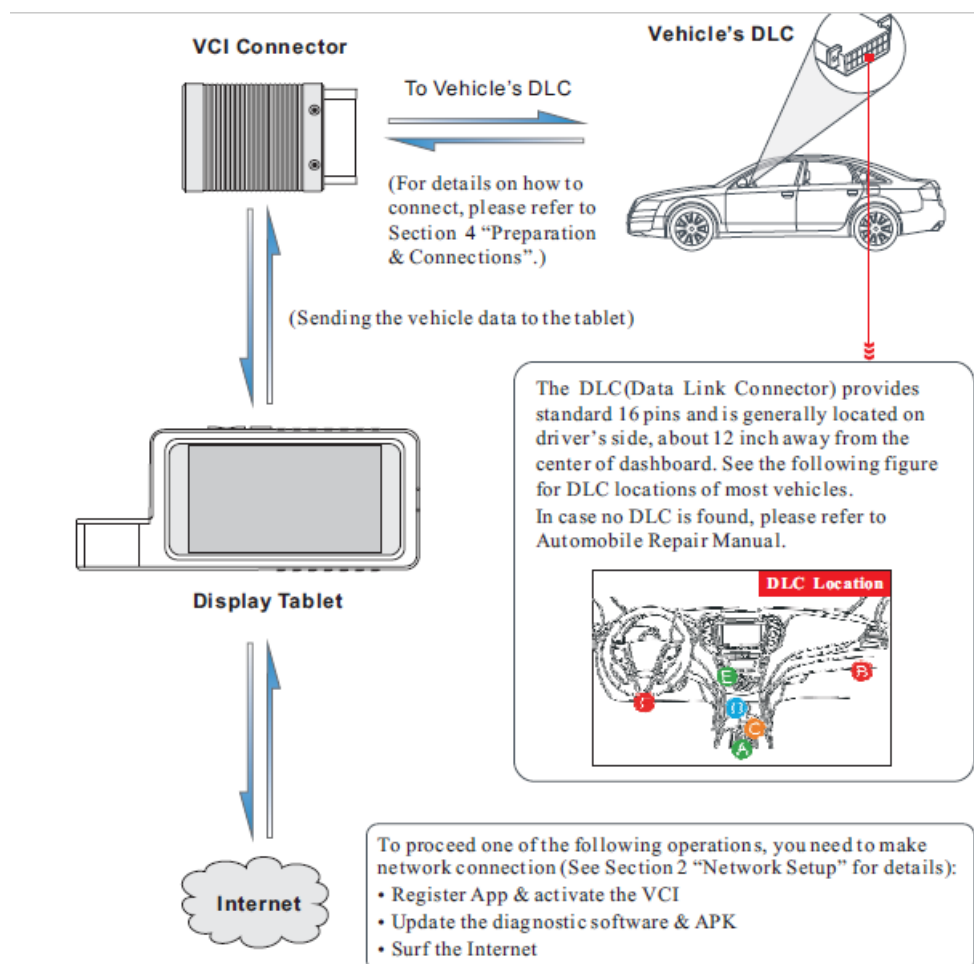
- **Display tablet**

Works as the central processor and monitor for analyzing vehicle data and indicating the test result

- **VCI connector**

Works as the vehicle communication interface device for accessing the vehicle data (only applies to the passenger vehicles of 12V).

The following illustration explains how the display tablet works with the VCI connector



The DLC(Data Link Connector) provides standard 16 pins and is generally located on driver's side, about 12 inch

away from the center of dashboard. See the following figure for DLC locations of most vehicles.
In case no DLC is found, please refer to Automobile Repair Manual.

To proceed one of the following operations, you need to make network connection (See Section 2 “Network Setup” for details):

- Register App & activate the VCI
- Update the diagnostic software & APK
- Surf the Internet

Start Diagnostics

Preparation & Connection

1. Switch the ignition OFF.
2. The vehicle battery voltage should be 9 18V.
3. Throttle should be in a closed position.

Connection

Follow the steps below to proceed:

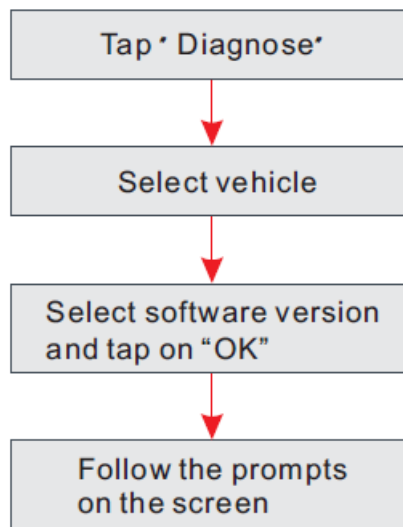
1. For vehicles equipped with an OBD II management system , plug the VCI connector into the vehicle's DLC directly or use the OBD II extension cable to connect the VCI connector and the DLC.
2. For vehicles not equipped with an OBD II management system, do the following:
 - 1). Select the corresponding non-16pin connector.
 - 2). Plug the non-16pin end of the connector into the DLC socket, then connect the other end to the OBD I adaptor, and then tighten the captive screws.
 - 3). Connect the other end of the adaptor to the VCI connector.
 - 4). To supply power to OBD I adaptor from:
 - A. Battery Clamps Cable(optional): Connect one end of the battery clamps cable to vehicle's battery, and the other end to the power jack of OBD I adaptor, Or
 - B. Cigarette Lighter Cable(optional): Connect one end of the cigarette lighter cable to vehicle's cigarette lighter receptacle, and the other end to the power jack of OBD I adaptor.
3. Switch the ignition ON.

Start Diagnostics

For new users, please follow the operation chart shown left to get familiar with and start using this tool.

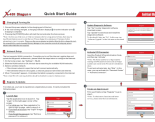
*Notes:

1. To start a diagnostic session, you have to activate the VCI connector and download the diagnostic software.
For details, refer to Section 3 “Register & Update” in this Quick Start Guide.
2. Please remove the VCI connector from the DLC and re insert it into the VCI slot after use to avoid loss.
3. All software is updated from time to time. To enjoy better service and more capabilities, you are recommended to keep updated with the latest available software.



***Note:** Due to continuing improvements, actual product may differ slightly from the product described herein and this Quick Start Guide is subject to change without prior notice.

Documents / Resources

	<p>LAUNCH X-431 Diagun V Communication Via BT Auto Obdii Diagnostic Tester [pdf] User Guide</p> <p>X-431 Diagun V, Communication Via BT Auto Obdii Diagnostic Tester</p>
--	--