



LAUNCH CRP919EBT Elite OBD2 Scanner User Guide

[Home](#) » [Launch](#) » LAUNCH CRP919EBT Elite OBD2 Scanner User Guide 

LAUNCH

The Global Leader In Diagnostics
Quick Start Guide

Contents

- [1 CRP919EBT Elite OBD2 Scanner](#)
- [2 Charging & Turning On](#)
- [3 Language Setting](#)
- [4 WLAN Setup](#)
- [5 Register & Update](#)
- [6 Preparation & Vehicle Connection](#)
- [7 Start Diagnostics](#)
- [8 Documents / Resources](#)
 - [8.1 References](#)

CRP919EBT Elite OBD2 Scanner



AUTO Smart Diagnostic Tool

Applicable to the following product models (x = A~Z, indicating configuration difference):

- OADD-PO1005x
- OADD-PO0805x
- OADD-PO0705x

Note: The supported vehicle models, diagnostic software and function modules are subject to the product configuration.

IMPORTANT: Read the instruction carefully and use the unit properly before operating. Failure to do so may cause damage and/or personal injury, which will void the product warranty.

Charging & Turning On

1. Use the included power adaptor to charge the tablet.
2. After charging is complete, press the POWER button to turn the tablet on. The system starts initializing and then enters the home screen.

Warning: Please use the included power adaptor to charge your tool. No responsibility can be assumed for any

damage or loss caused as a result of using power adaptors other than the one supplied.

Language Setting

The tool supports multiple system languages. To change the language of the tool, please do the following:

1. Go to "Tablet Settings" -> "System" -> "Language & input" -> "Languages".
2. Tap "Add a language", and then choose the desired language from the list.
3. Tap and hold the desired language and drag it to the top of the screen and then release it, the system will change into the target language.

WLAN Setup

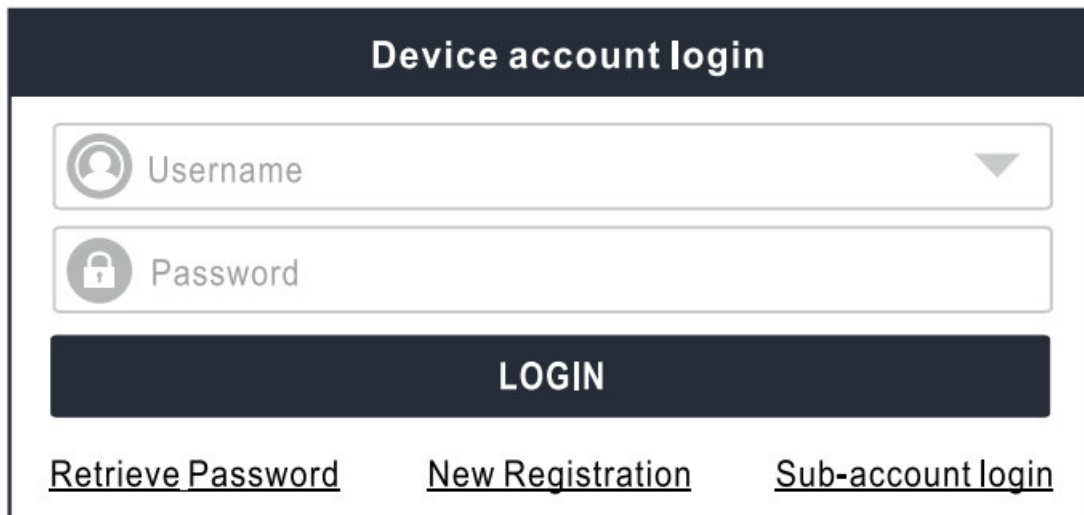
Once you're online, you can register your tool, update the diagnostic software and APK and surf the Internet etc.

1. Go to "Tablet Settings" -> "Network & internet" -> "WLAN".
2. The tablet will start searching for all available wireless networks. Select the desired Wi-Fi connection from the list (Password may be required for secured networks).
3. When Connected appears, it indicates that it is properly connected to the network.

Register & Update

For new users, a sign-up process is required. Follow the steps below to proceed registration and update:

1. Launch app: Tap "Login" on the upper right corner of the screen. The following screen will appear.



Device account login

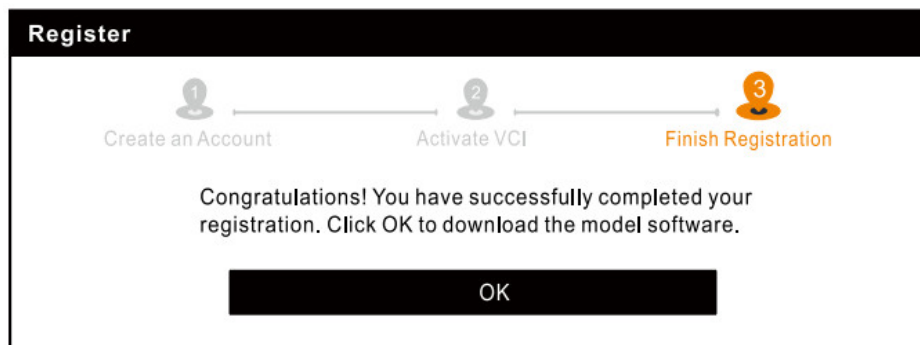
Username

Password

LOGIN

[Retrieve Password](#) [New Registration](#) [Sub-account login](#)

2. Create an App Account: Tap "New Registration", input the information (items with * must be filled) and then tap "Register".



All software is updated periodically. It is recommended to check regularly for updates and install the latest software version for the best service, functions and experience.

***Note:** Make sure the Wi-Fi connection is strong and stable while upgrading.

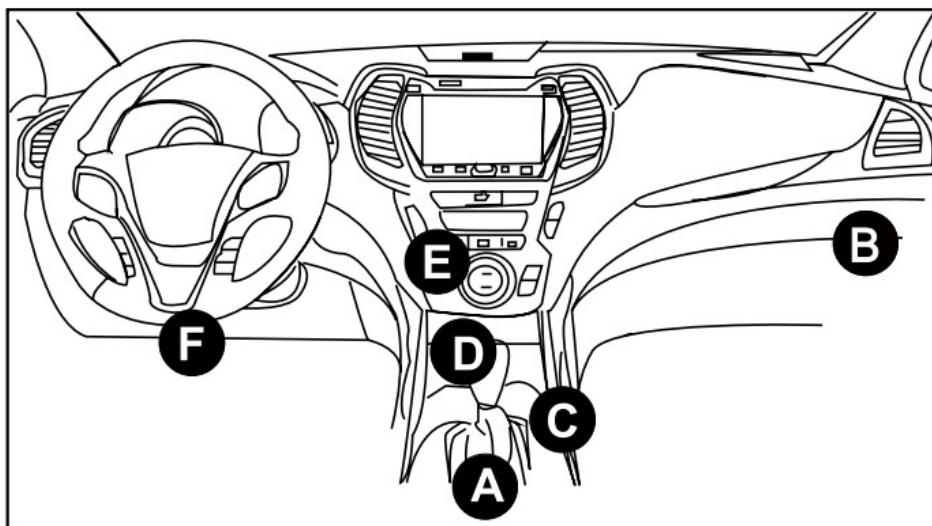
After the registration is successfully complete, the wireless communication between the tablet and the VCI device is automatically established and user has no need to configure it again.

Preparation & Vehicle Connection

5.1 Preparation

- The ignition is turned on.
- The vehicle battery voltage is 11-14V.
- Locate the vehicle DLC (Data Link Connector) port.

For Passenger Vehicles, the DLC(Data Link Connector) is usually located 12 inches from the center of the instrument panel, under or around the driver's side for most vehicles. For some vehicles with special designs, the DLC location may vary. Refer to the following figure for location.



- A. Opel, Volkswagen, Audi
- B. Honda
- C. Volkswagen
- D. Opel, Volkswagen, Citroen
- E. Changan
- F. Hyundai, Daewoo, Kia, Honda, Toyota, Nissan, Mitsubishi, Renault, Opel, BMW, Mercedes-Benz, Mazda, Volkswagen, Audi,

GM, Chrysler, Peugeot, Regal, Beijing Jeep, Citroen and other most popular models
If the DLC cannot be found, refer to the vehicle's service manual for the location.

5.2 Vehicle Connection

Use the included diagnostic cable to connect the VCI device to the vehicle's DLC port.

*For non-OBD II vehicles, a non-16pin connector(adaptor) is required.

Start Diagnostics

The following diagnostic methods are available or partially available (The supported diagnostics functions are subject to the product configuration):

- **Intelligent Diagnostics:**

The system will automatically guide you directly to the fix and help you eliminate guesswork, without step-by-step manual menu selection.

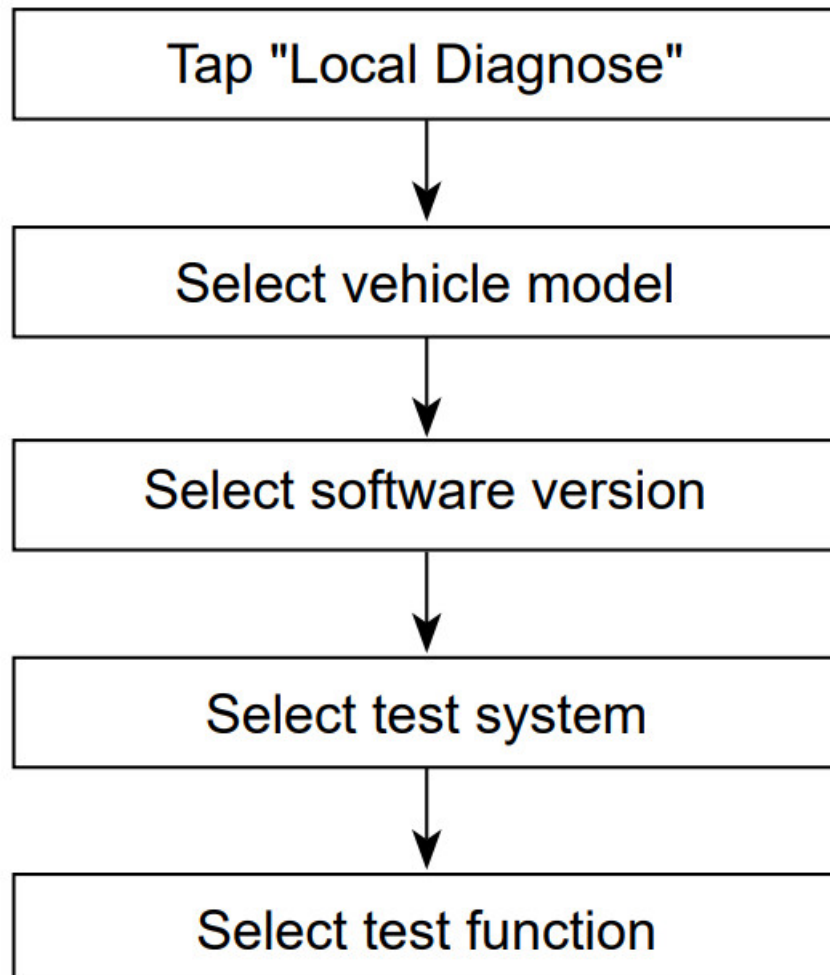
- **Local Diagnostics:**

You need to manually select the menu-driven command.

- **Remote Diagnostics:**

This helps repair shops or mechanics to diagnose a remote vehicle, and launch instant messages, allowing for improved efficiency and faster repairs.

For new users, the Local Diagnostics is recommended as follows:



Note: Pictures illustrated here are for reference purpose only. Due to continuing improvements, actual product may differ slightly from the product described herein and this Quick Start Guide is subject to change without notice. For more detailed operations, please refer to the In-App User Manual.

Statement:

FCC ID: XUJX431PROV5

Note: This equipment has been tested and found to comply with the limits for a Class B digital device, pursuant to part 15 of the FCC Rules.

These limits are designed to provide reasonable protection against harmful interference in a residential installation. This equipment generates, uses and can radiate radio frequency energy and, if not installed and used in accordance with the instructions, may cause harmful interference to radio communications. However, there is no guarantee that interference will not occur in a particular installation. If this equipment does cause harmful interference to radio or television reception, which can be determined by turning the equipment off and on, the user is encouraged to try to correct the interference by one or more of the following measures:

- Reorient or relocate the receiving antenna.
- Increase the separation between the equipment and receiver.
- Connect the equipment into an outlet on a circuit different from that to which the receiver is connected.
- Consult the dealer or an experienced radio/TV technician for help.


The device has been evaluated to meet general RF exposure requirement. The highest reported SAR for stand-alone and simultaneous transmission exposure conditions are below the maximum value. End-users must be informed of the operating requirements for satisfying RF exposure compliance.

This device is in compliance with the essential requirements and other relevant provisions of Radio Equipment Directive 2014/53/EU. The RF frequencies can be used in Europe without restriction.



The Global Leader In Diagnostics
V1.00.000
107013633

Documents / Resources

	LAUNCH CRP919EBT Elite OBD2 Scanner [pdf] User Guide CRP919EBT Elite OBD2 Scanner, CRP919EBT, Elite OBD2 Scanner, OBD2 Scanner, Scanner
---	--

References

- [User Manual](#)