



LAUNCH CRP123 Register and Update OBD2 Scanner User Guide

[Home](#) » [Launch](#) » LAUNCH CRP123 Register and Update OBD2 Scanner User Guide 

LAUNCH CRP123 Register and Update OBD2 Scanner User Guide



Contents

- [1 Follow the steps described as below to proceed registration and update](#)
- [2 Documents / Resources](#)
 - [2.1 References](#)
- [3 Related Posts](#)

Follow the steps described as below to proceed registration and update

1. Go to <http://www.x431.com/CRP123> (for CRP123) / <http://www.x431.com/CRP129> (for CRP129) and download the update tool to the computer. Decompress and install it on your computer (compatible with Windows XP, 7, 8 & 10).
2. Launch the program when installed, a screen similar to Figure 2 will appear:



Figure 1

3. In **Figure 1**, type in the Product Serial Number located at the back of the tool, and click Update to jump to the registration page. Enter the following information and click Submit (**refer to Figure 2**).

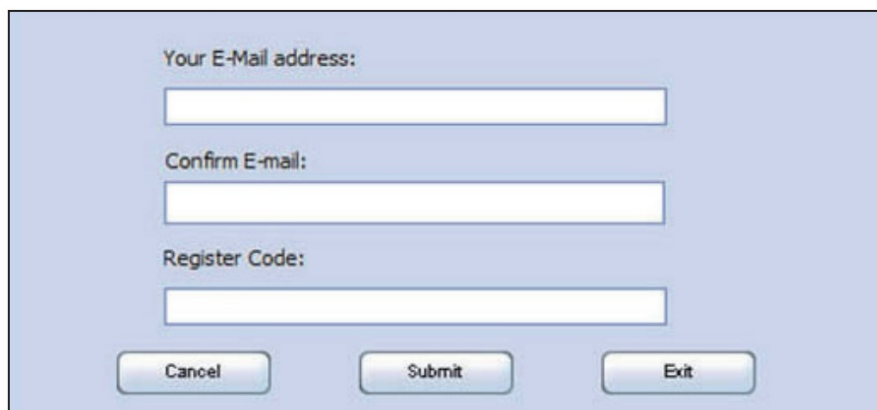


Figure 2

- (If you need the Register Code, please refer to steps 4~7.)
(If you have the Register Code, directly proceed to step 8.)
4. The Register Code can be found in your tool. Connect one end of the supplied USB cable to your tool, and the other end on the computer.
 5. After the tool has powered up and entered the main menu screen, move the highlight bar on the Help icon (**see Figure 3**) and press the [OK] button.

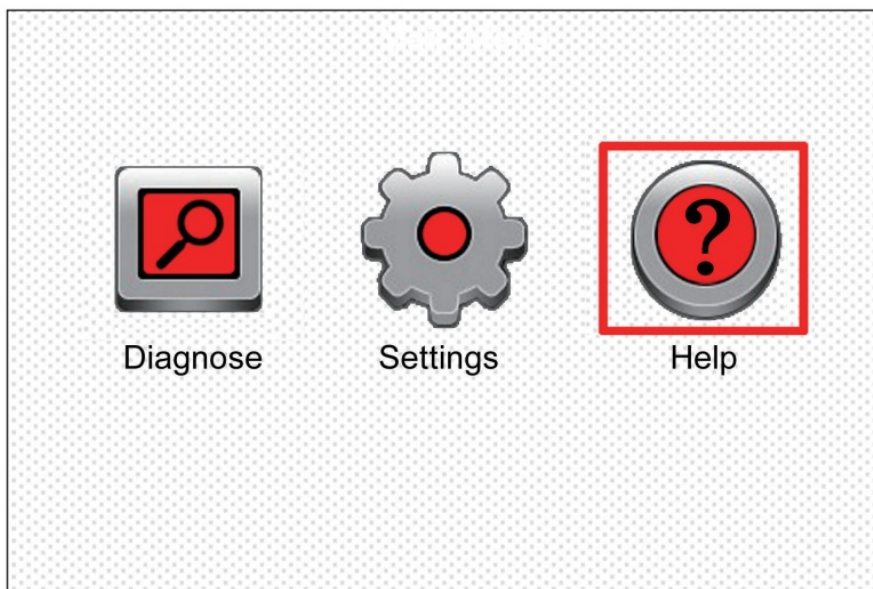


Figure 3

6. Select Tool Information (**refer to Figure 5**) and press the [OK] to enter.

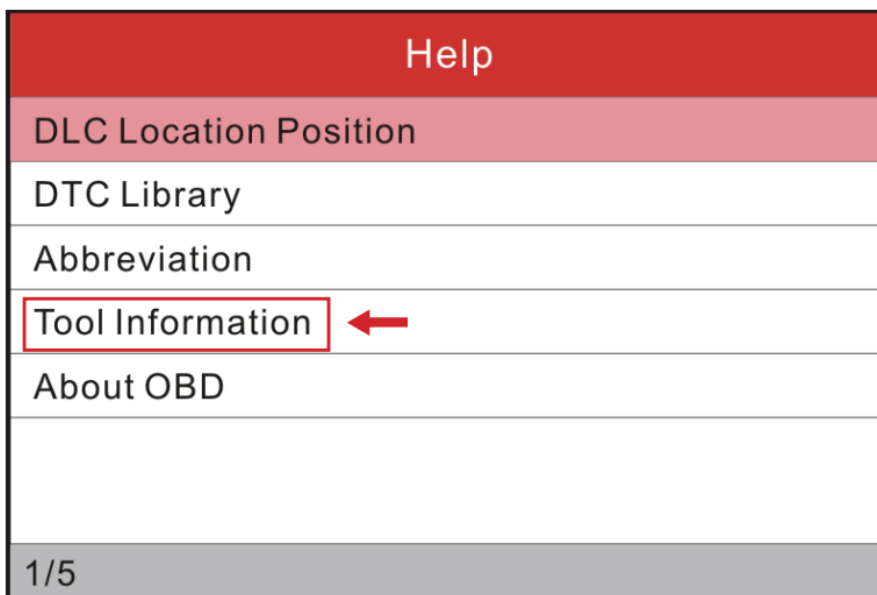


Figure 4

7. The Register Code shown in Figure 6 is the Register Code needed in step 3.

Tool Information	
Boot version:	V02.01
Display program version:	V02.00
Diagnostic program version:	V10.50
Diagnostic library version:	V02.24
Serial Number:	000000000000
Register Code:	→ 270025000247
ESC - Exit	

Figure 5

(Return to step 3 and input the Register Code and then proceed)

8. Install the memory card from the tool into the supplied memory card adaptor and insert into the USB port of the computer.
9. Reopen the update tool, select the updates you would like to perform or click “Select All”, and then click Download to start downloading. **See Figure 6.**

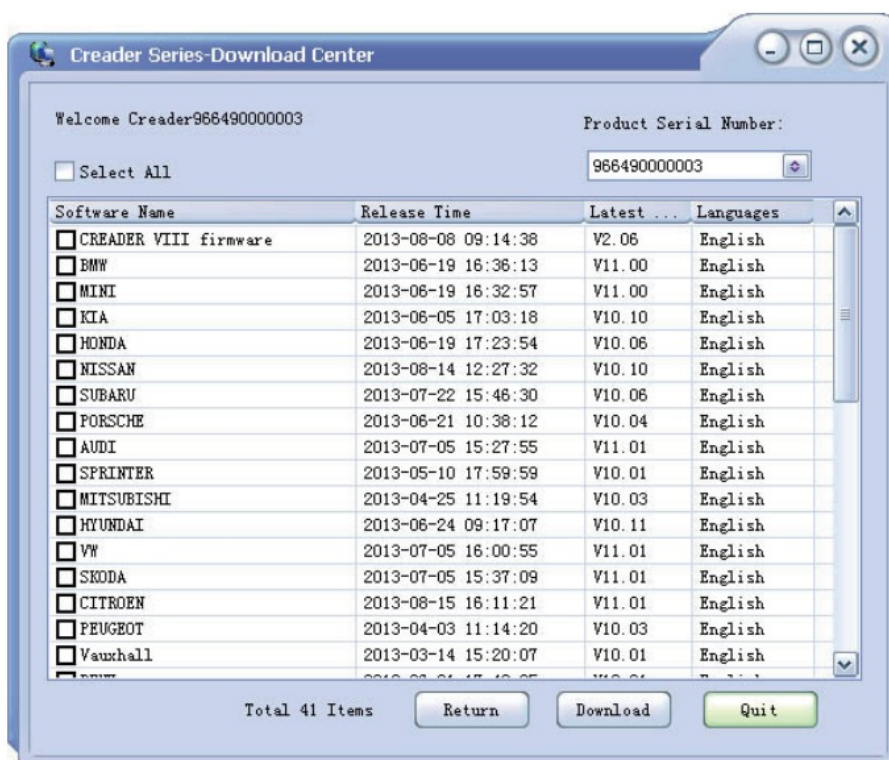


Figure 6

10. Once all steps are complete, reinsert the memory card into the tool and power the tool via USB cable or via diagnostic cable (one end to DB-15 connector of the tool and the other end on the vehicle's DLC). A dialog box (Note: If only diagnostic software is updated and no firmware packages are downloaded in Figure 6, this box will not appear) prompting you to upgrade will pop up on the screen (**See Figure 7**), select OK to proceed.

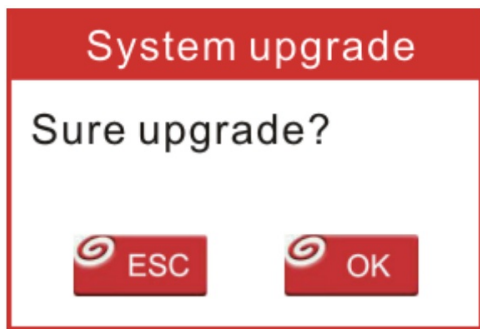


Figure 7

11. The registration process is now complete, your tool is now ready for use. **See Figure 8.”**

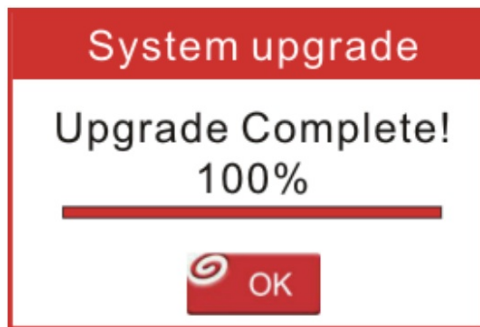


Figure 8




IF YOU HAVE QUESTIONS OR COMMENTS, CONTACT US.

+86-755-8455-7891 www.x431.com

LAUNCH

Documents / Resources

	<p>LAUNCH CRP123 Register and Update OBD2 Scanner [pdf] User Guide 123, 129, CRP123 Register and Update OBD2 Scanner, CRP123, Register and Update OBD2 Scanner, Update OBD2 Scanner, OBD2 Scanner, Scanner</p>
---	--

References

- [征 X431](#)
- [征 X431](#)
- [征 X431](#)

- [User Manual](#)

Manuals+.