

[Skip to content](#)

Manuals+

User Manuals Simplified.



LASERCO T4P-FEED4L Smart Pet Feeder User Guide

[Home](#) » [LASERCO](#) » LASERCO T4P-FEED4L Smart Pet Feeder User Guide

Contents [hide](#)

[1 LASERCO T4P-FEED4L Smart Pet Feeder](#)

[2 PRODUCT SPECIFICATIONS](#)

[3 PACKAGE CONTENTS](#)

[4 GET THE APP](#)

[5 REGISTER OR LOGIN TO APP](#)

[6 RECOMMENDED APP SETTINGS](#)

[7 PRODUCT DIAGRAM](#)

[8 CONNECTING FEEDER TO APP](#)

[9 USING THE FEEDER](#)

[10 TROUBLESHOOTING](#)

[11 WARRANTY](#)

[12 Documents / Resources](#)

[13 Related Posts](#)



LASERCO T4P-FEED4L Smart Pet Feeder



PRODUCT SPECIFICATIONS

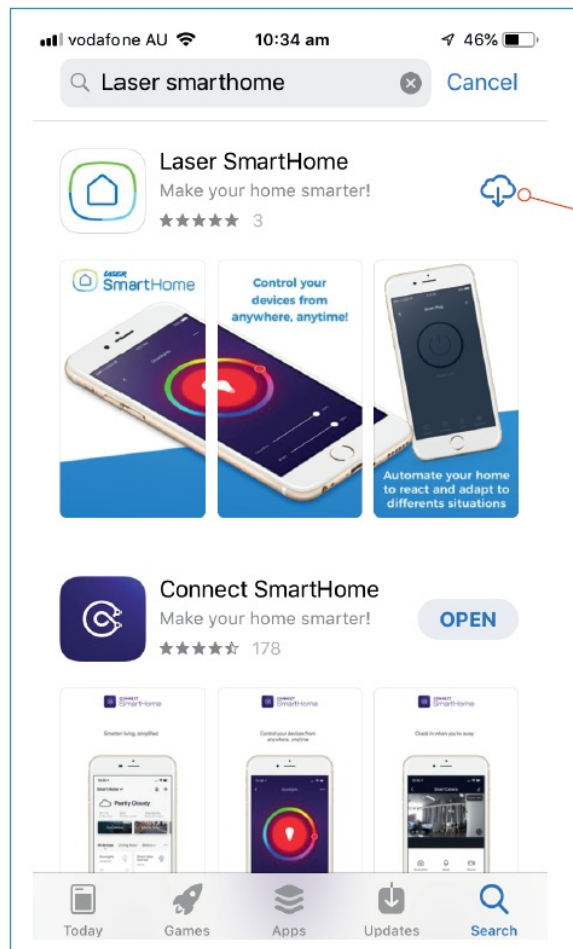
- Power: USB Cable plugged into USB Adapter
- Food Capacity: 4L
- Food Size: 2 – 10mm (dry food only)
- Wi-Fi: 2.4Ghz only (5Ghz not supported)

PACKAGE CONTENTS

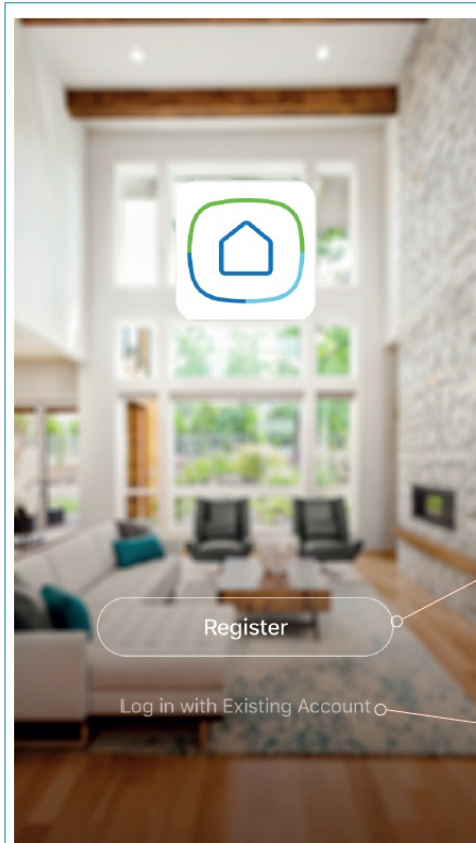
- 1 x USB Cable
- 1 x USB Power Adapter
- 1 x Feeder
- 1 x Manual

GET THE APP

QR Code for Downloading Apps



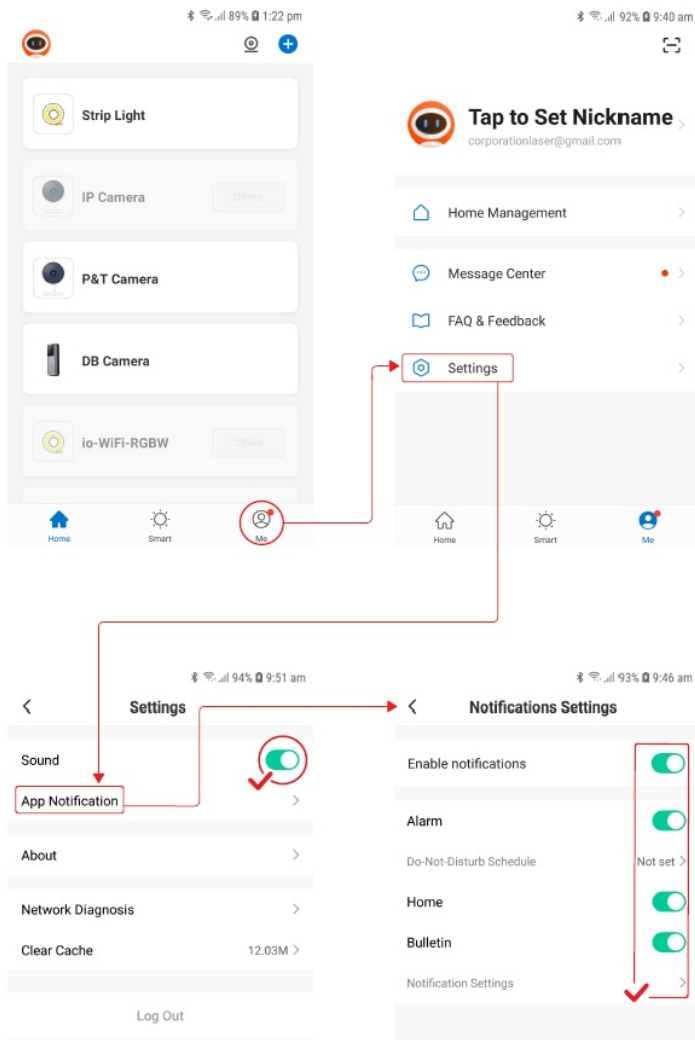
REGISTER OR LOGIN TO APP



REGISTER
no account

LOGIN
existing account

RECOMMENDED APP SETTINGS

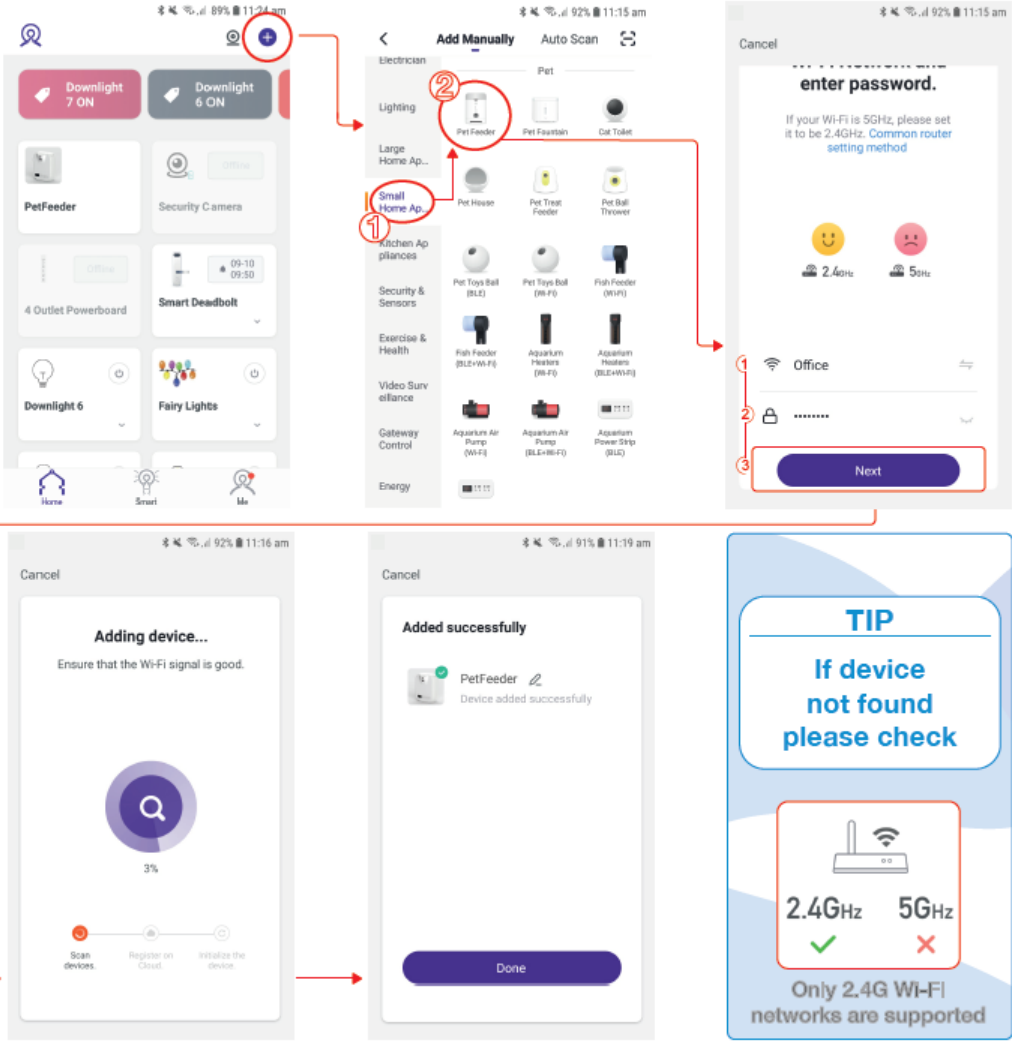


PRODUCT DIAGRAM

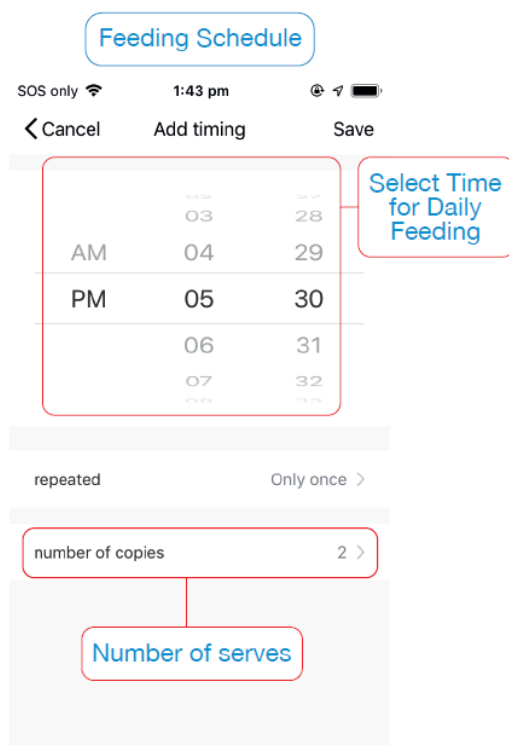
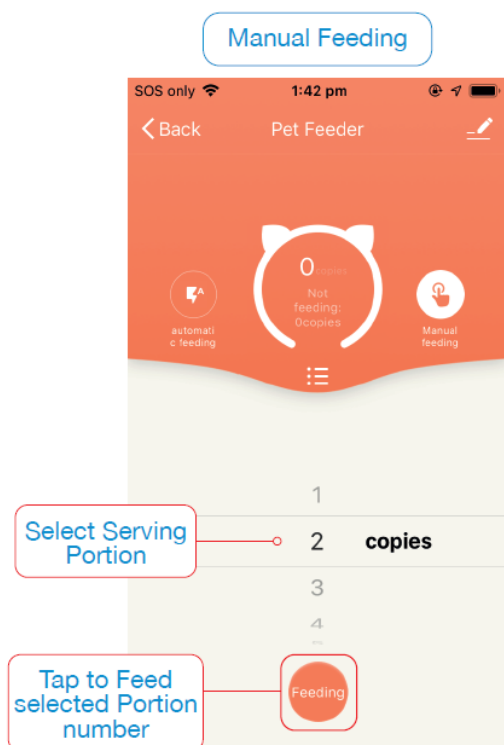
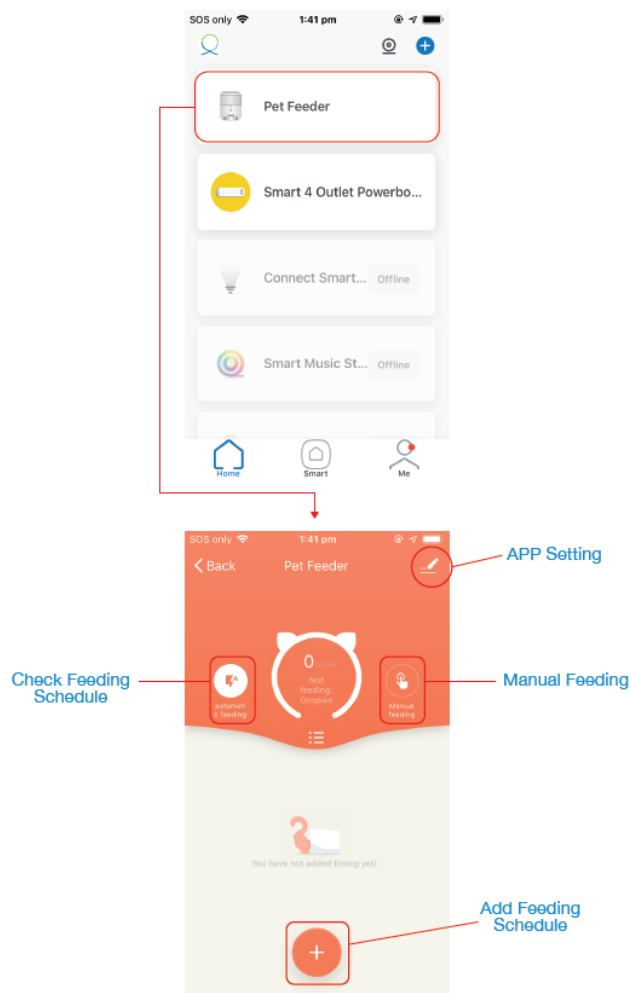


CONNECTING FEEDER TO APP

Press and HOLD Reset button on the front of the feeder to put into pairing mode then open the APP



USING THE FEEDER



TROUBLESHOOTING

Why is the food not dispensing?

- Check the food bucket has available food.
- If the food bucket is not empty check if the outlet is blocked or damaged. Clean or unblock if necessary (please power off during cleaning/unblocking).
- Check the connection with the APP.

The device is not connecting to the APP

Check your Wifi username and password are correct and you are only using 2.4Ghz Wifi connections as the 5Ghz band is not supported.

LASER

www.youtube.com/LasercoAu

WARRANTY

Our goods come with guarantees that cannot be excluded under the Australian Consumer Law. You are entitled to a replacement or refund for a major failure and compensation for any other reasonably foreseeable loss or damage. You are also entitled to have the goods repaired or replaced if the goods fail to be of acceptable quality and the failure does not amount to a major failure.

www.laserco.com.au

Documents / Resources



PRODUCT SPECIFICATIONS	
Power	USB Cable (supplied) or USB Adapter
Product Capacity	4L
Food Size	1 - 10mm (dry food only)
WiFi	2.4Ghz only (5Ghz not supported)
FOR INDOOR USE ONLY	
Includes Contents	
• 1 x USB Cable	
• 1 x USB Adapter (supplied)	
• 1 x T4P Feeder	
• 1 x Manual	

[LASERCO T4P-FEED4L Smart Pet Feeder](#) [pdf] User Guide
T4P-FEED4L, Smart Pet Feeder

[Manuals+](#)

- [home](#)
- [privacy](#)