

LASERCO Smart Solar Powered Water Controller User Manual

[Home](#) » [LASERCO](#) » LASERCO Smart Solar Powered Water Controller User Manual

Contents [[hide](#)]

- 1 [LASERCO Smart Solar Powered Water Controller](#)
- 2 [GET THE APP](#)
- 3 [REGISTER OR LOGIN TO APP](#)
- 4 [RECOMMENDED APP SETTINGS](#)
- 5 [POWERING THE WATER CONTROLLER](#)
- 6 [POWERING THE GATEWAY](#)
- 7 [CONNECTING GATEWAY TO APP](#)
- 8 [CONNECTING GATEWAY TO WATER CONTROLLER](#)
- 9 [USING THE WATER CONTROLLER](#)
- 10 [CREATING A TIMER SCHEDULE](#)
- 11 [TROUBLESHOOTING](#)
- 12 [WARRANTY](#)
- 13 [Documents / Resources](#)
- 14 [Related Posts](#)



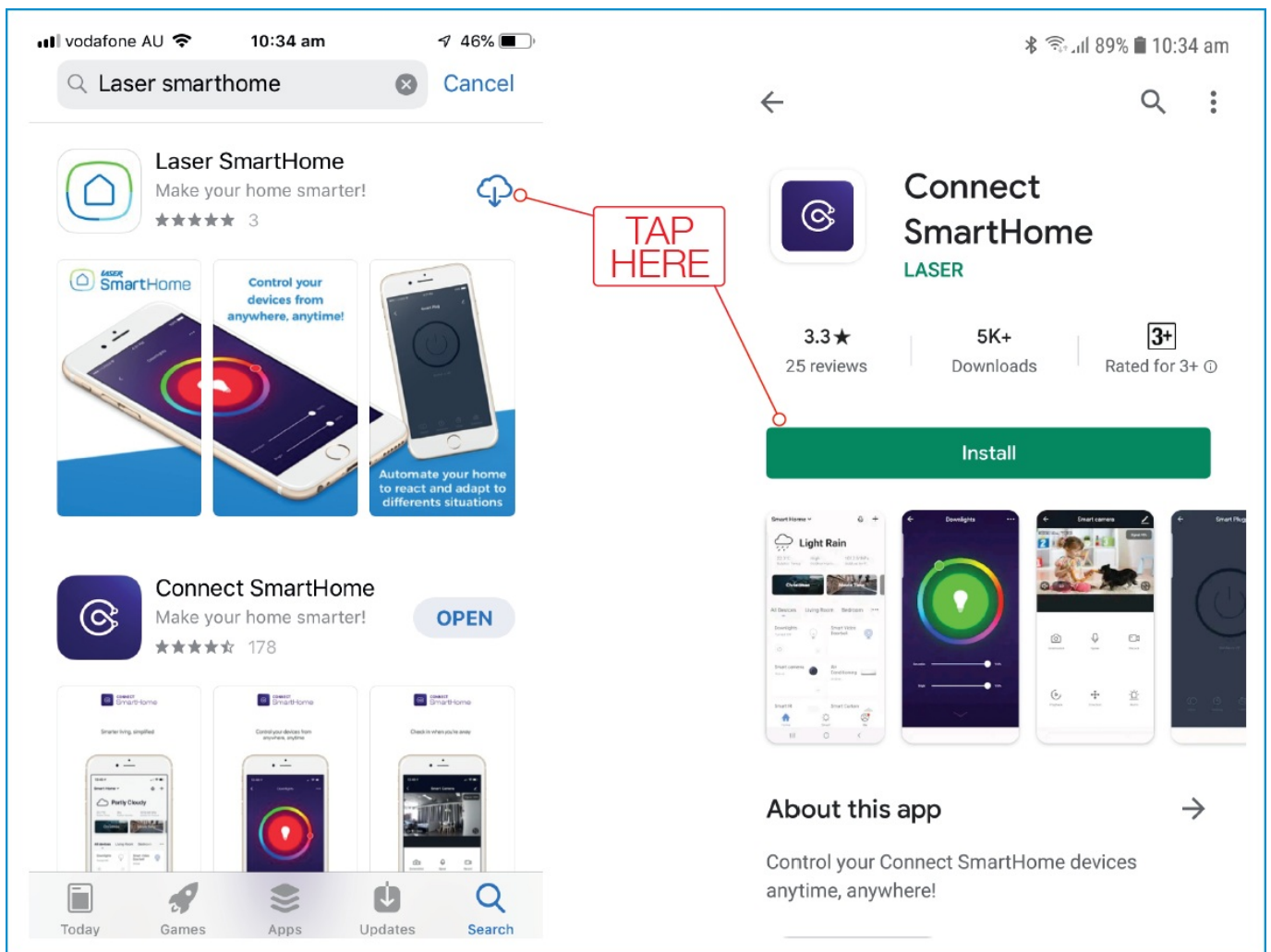
LASERCO Smart Solar Powered Water Controller



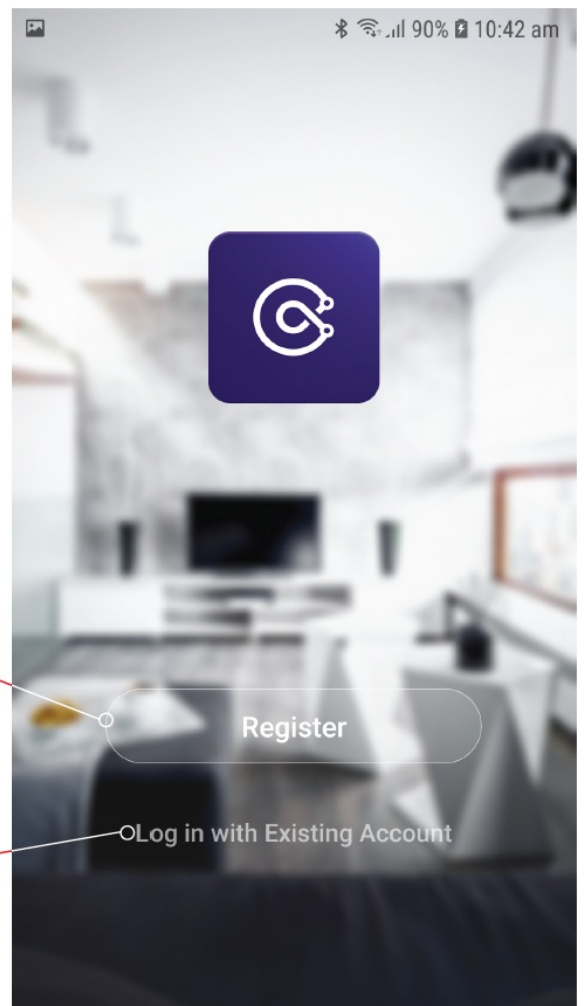
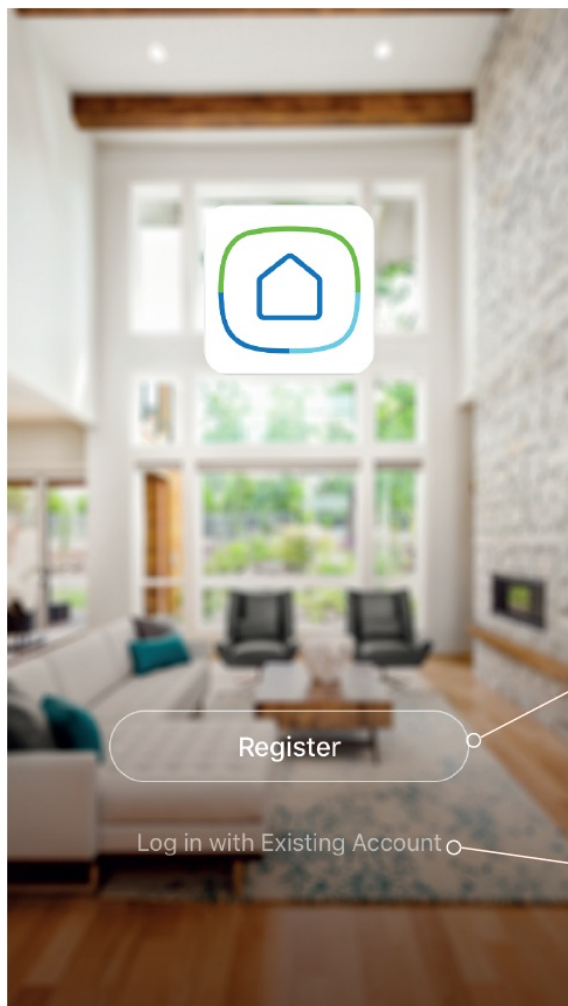
GET THE APP

QR Codes for Downloading Apps

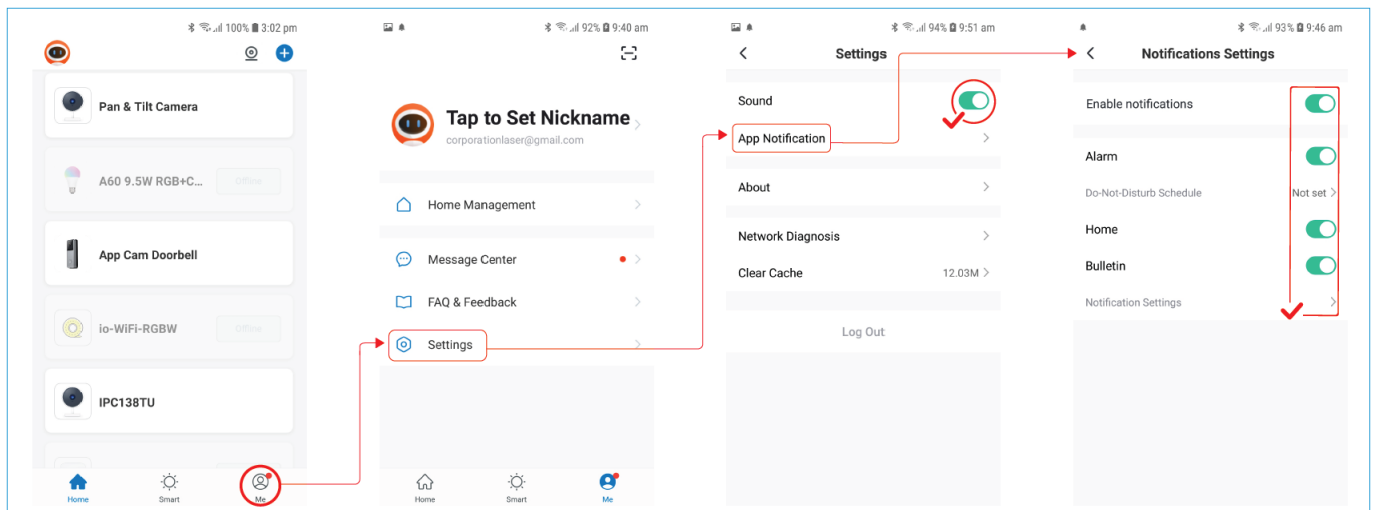




REGISTER OR LOGIN TO APP



RECOMMENDED APP SETTINGS



POWERING THE WATER CONTROLLER



Undo the screw at the bottom and insert 2 x AA rechargeable batteries into the Water Controller.



In strong direct sunlight the Solar Panel on the front of the Water Controller is able to power the device and recharge the batteries

POWERING THE GATEWAY



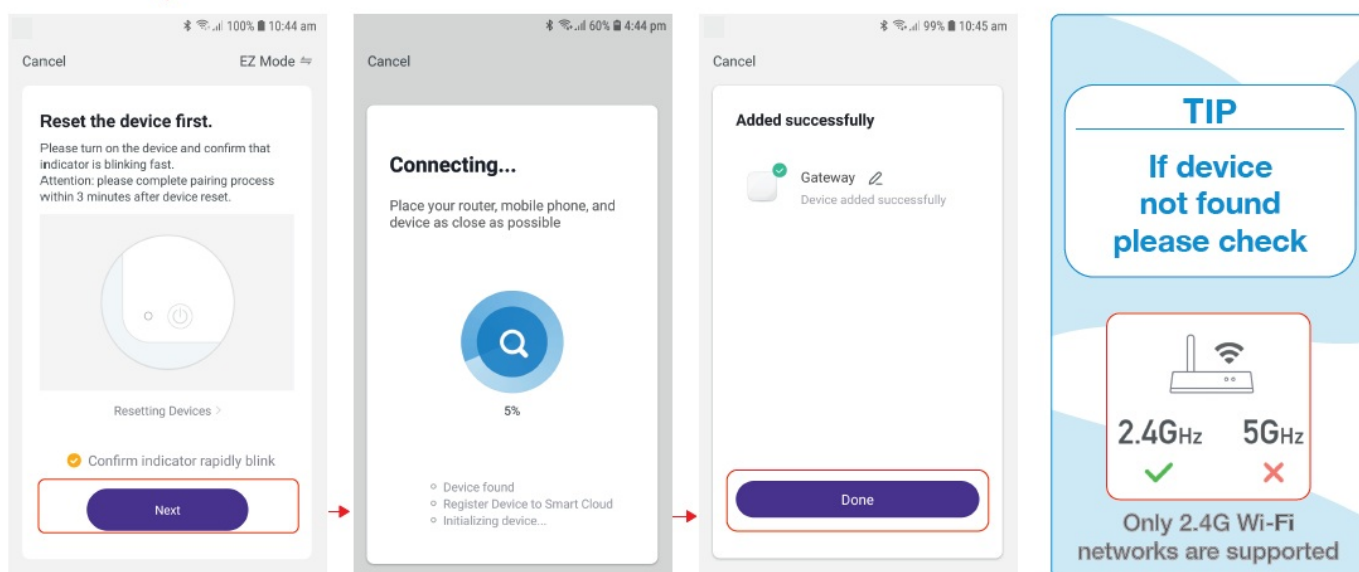
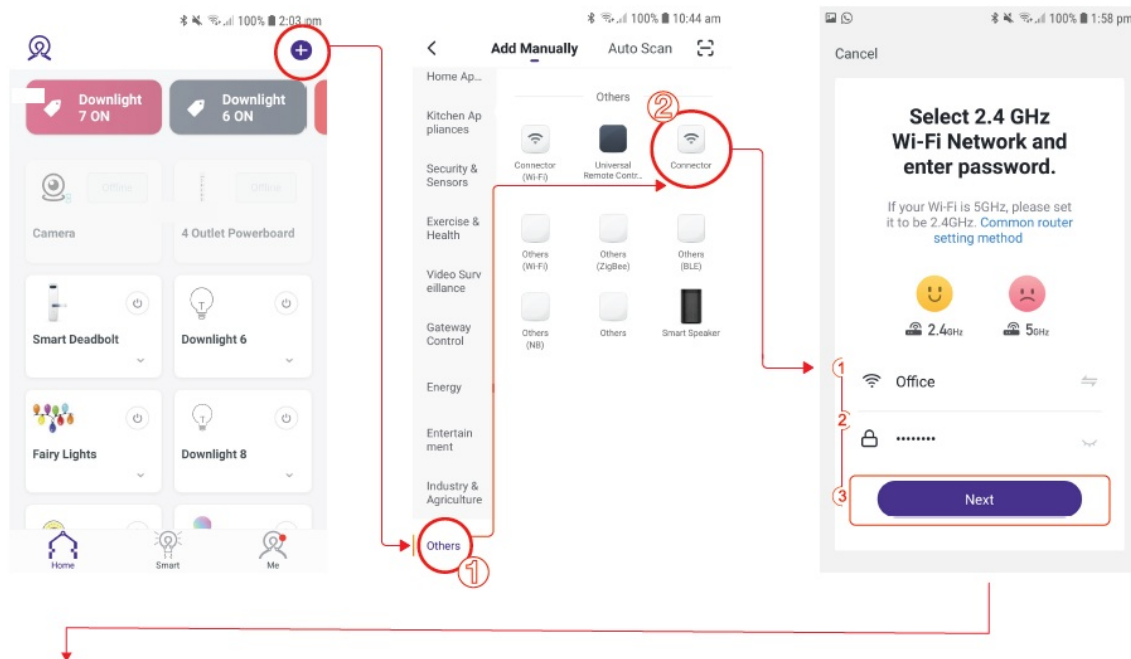
Connect the Gateway to a USB Power Adapter using a Micro USB Cable.

CONNECTING GATEWAY TO APP

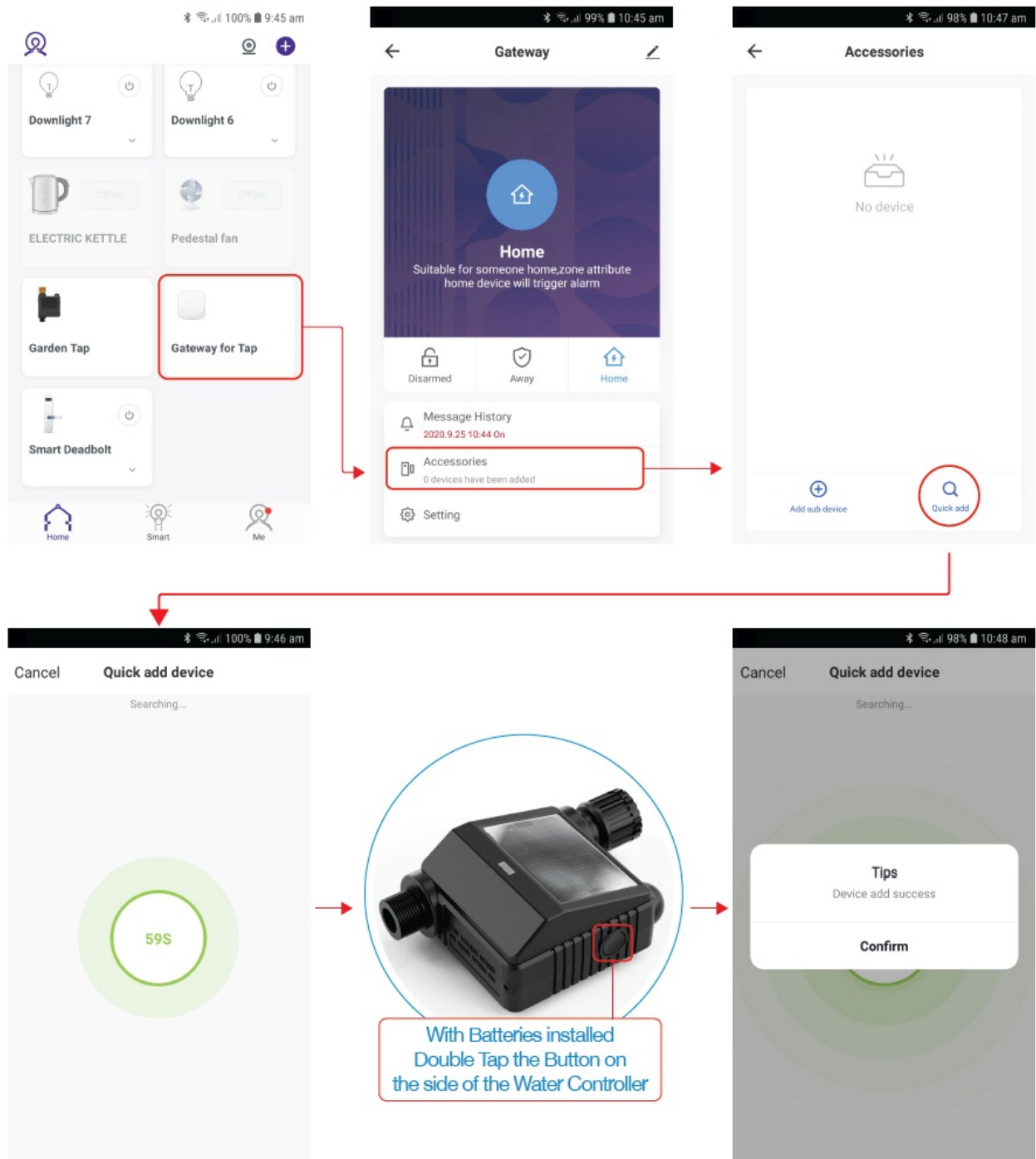


Flashing RED Light

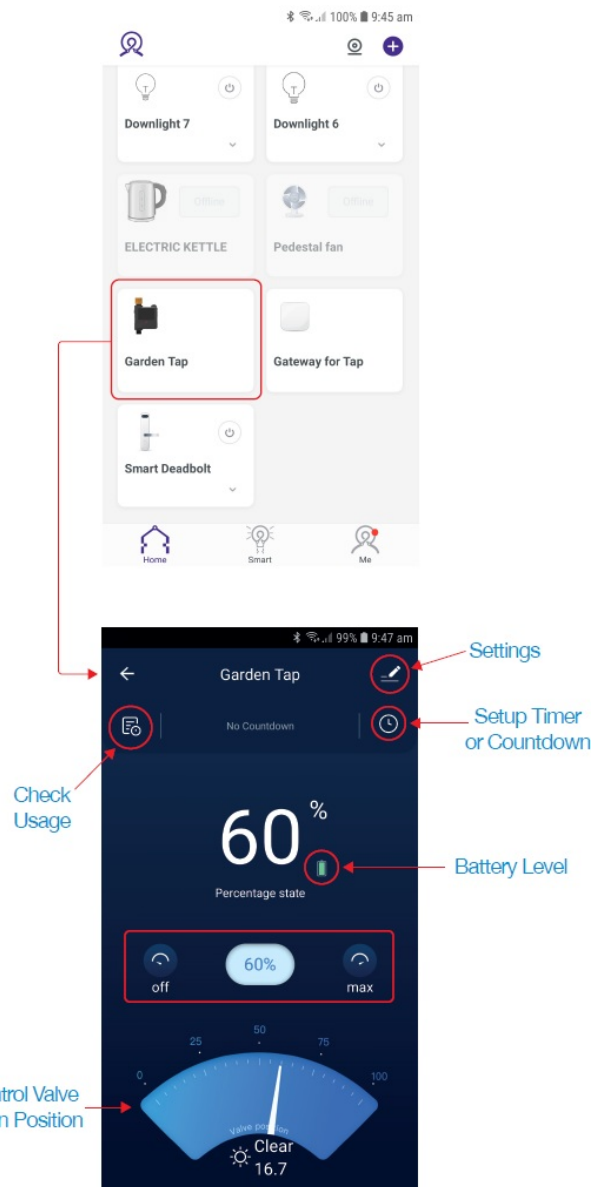
CONNECTING GATEWAY TO WATER CONTROLLER



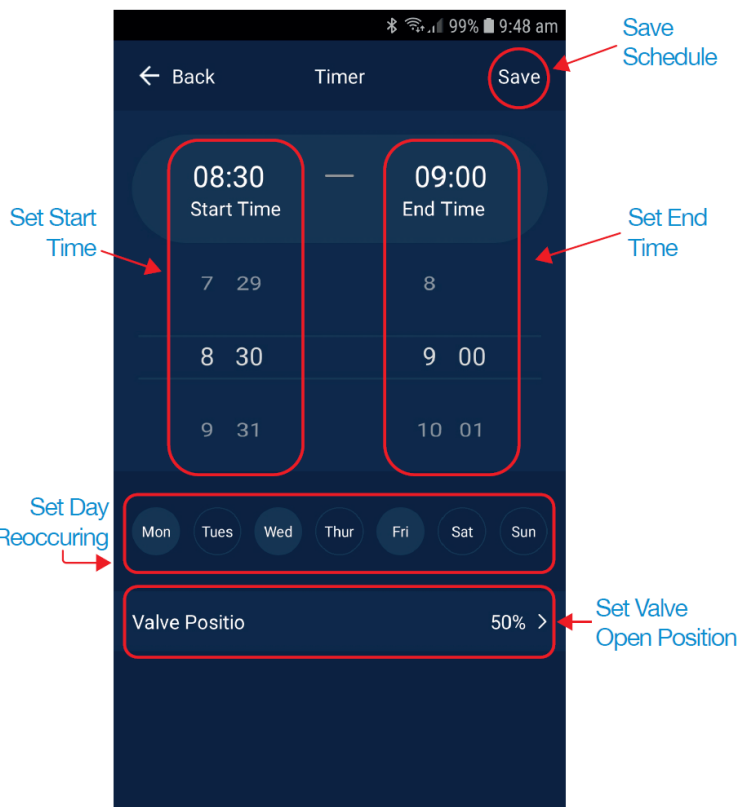
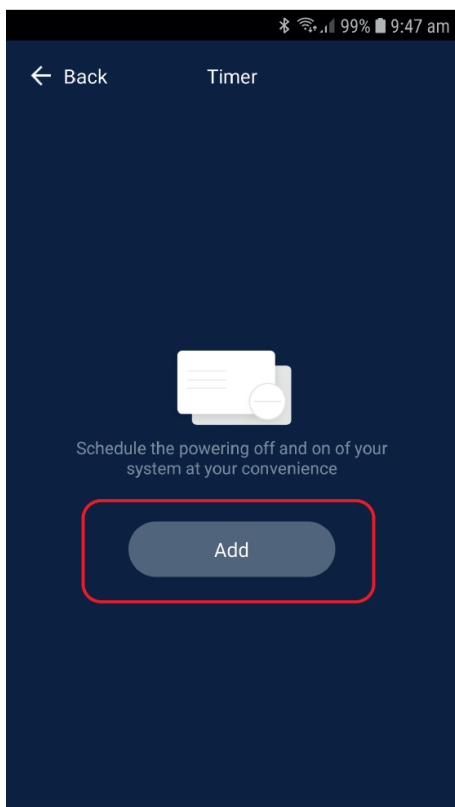
CONNECTING GATEWAY TO WATER CONTROLLER



USING THE WATER CONTROLLER



CREATING A TIMER SCHEDULE



TROUBLESHOOTING

1. The Water Controller is not Connecting to App

- The Water Controller needs the Gateway to work. The Gateway needs to be connected to the App first then the Water Controller to the Gateway.
- Please check your Wifi username and password are correct and you are only using 2.4Ghz Wifi connections as the 5Ghz band is not supported.

2. The Solar Panel is not Working or the Water Controller has no Power

- The Water Controller needs 2 x AA batteries to work.
- If you want the Solar Panel to recharge the battery then 2 x AA rechargeable batteries need to be installed.
- The Solar Panel can recharge the batteries approx 2-5% every couple of hours with strong direct sunlight.

LASER


www.youtube.com/LasercoAu

CONNECT

www.youtube.com/channel/UCCYzBiADapJN55Zzp3yfvLQ

WARRANTY

Our goods come with guarantees that cannot be excluded under the Australian Consumer Law. You are entitled to a replacement or refund for a major failure and compensation for any other reasonably foreseeable loss or damage. You are also entitled to have the goods repaired or replaced if the goods fail to be of acceptable quality and the failure does not amount to a major failure.

	<p>LASERCO Smart Solar Powered Water Controller [pdf] User Manual LASERCO, Smart, Solar Powered, Water Controller, CSH-WTRCTRLR, LSH-WTRCTRLR</p>
---	---