



laserco CSH-PLGUSBPM Plug with 2 x USB & Power Monitoring User Manual

[Home](#) » [LASERCO](#) » laserco CSH-PLGUSBPM Plug with 2 x USB & Power Monitoring User Manual 

Contents

- 1 laserco CSH-PLGUSBPM Plug with 2 x USB & Power Monitoring
- 2 GET THE APP
- 3 REGISTER OR LOGIN TO APP
- 4 RECOMMENDED APP SETTINGS
- 5 CONNECTING PLUG TO APP
 - 5.1 USING THE PLUG
- 6 PLUG SETTINGS
- 7 TROUBLESHOOTING
- 8 Documents / Resources
 - 8.1 References
- 9 Related Posts



laserco CSH-PLGUSBPM Plug with 2 x USB & Power Monitoring



GET THE APP

vodafone AU 10:34 am 46%

Laser smarthome Cancel

Laser SmartHome
Make your home smarter!
★★★★★ 3

Control your devices from anywhere, anytime!

Automate your home to react and adapt to different situations

Connect SmartHome
Make your home smarter!
★★★★★ 178

OPEN

Today Games Apps Updates Search

89% 10:34 am

← 🔍 ⋮

Connect SmartHome
LASER

3.3★
25 reviews

5K+
Downloads

3+
Rated for 3+ ⓘ

Install

Smart Home +
Light Rain
All Devices Living Room Bedroom
Smart camera
Smart Hub

About this app →

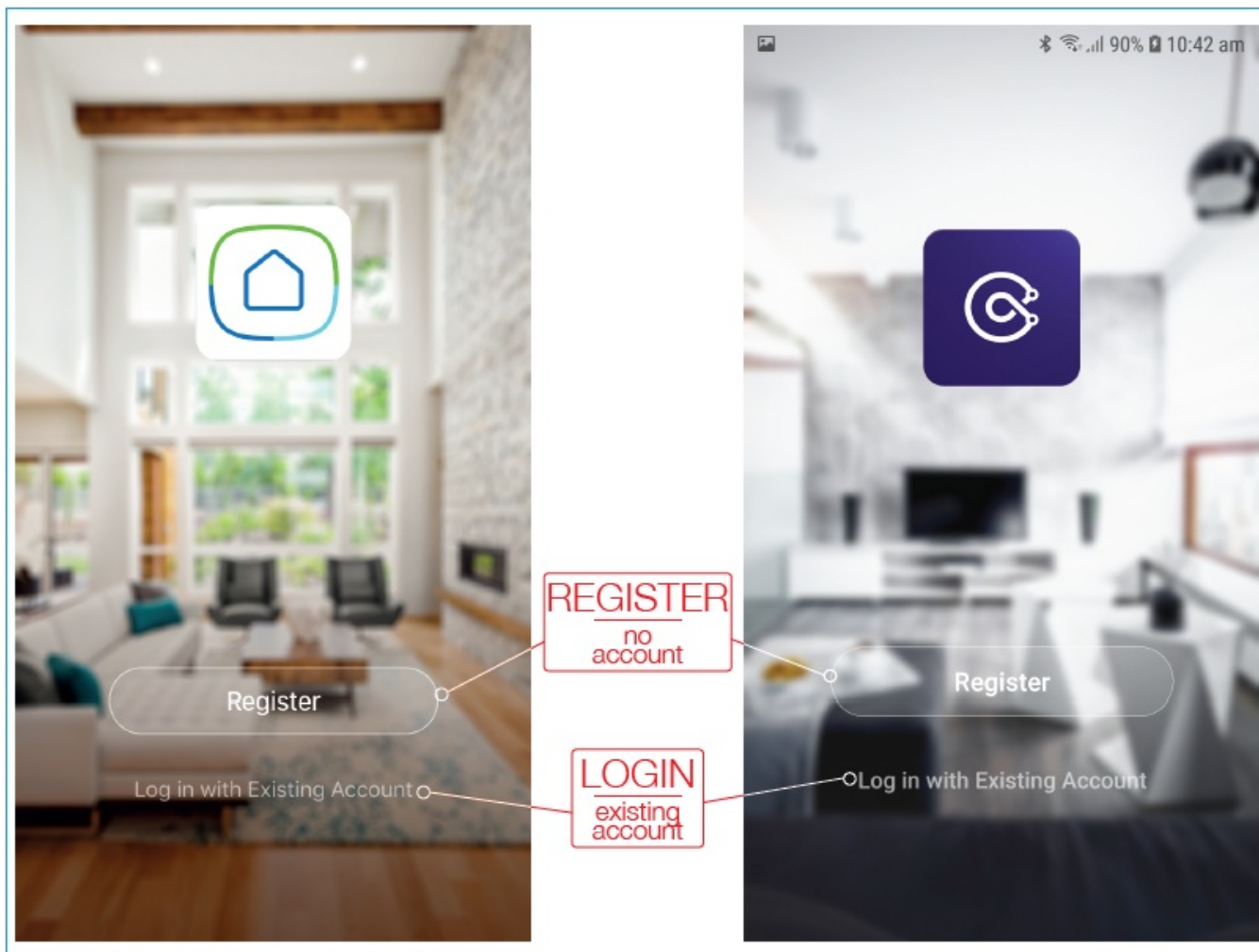
Control your Connect SmartHome devices anytime, anywhere!

TAP
HERE

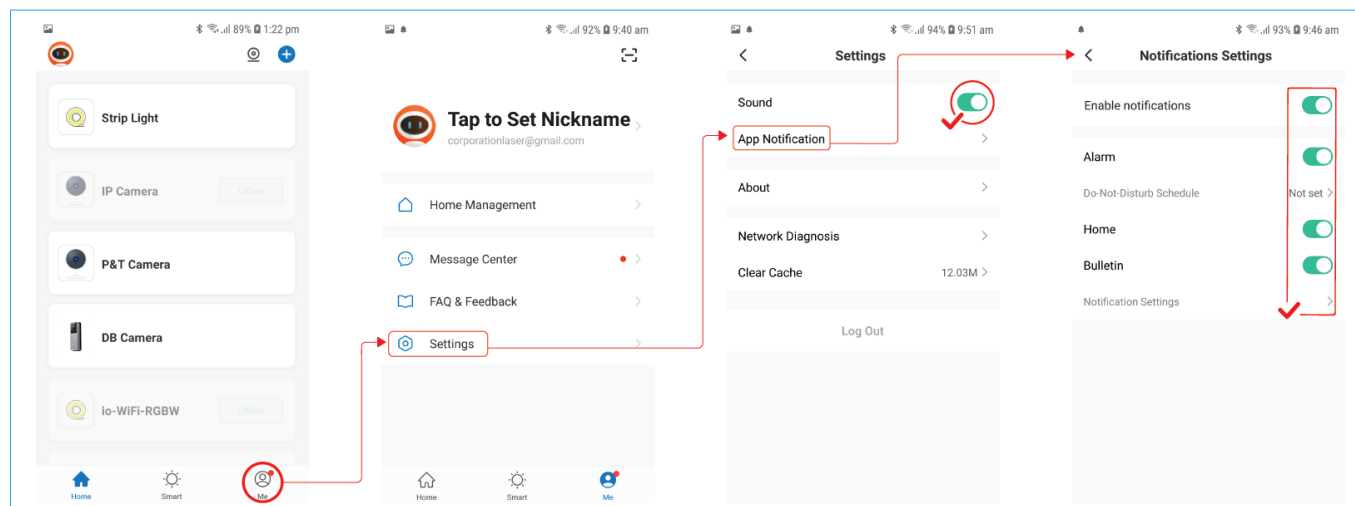


QR Codes for Downloading Apps

REGISTER OR LOGIN TO APP



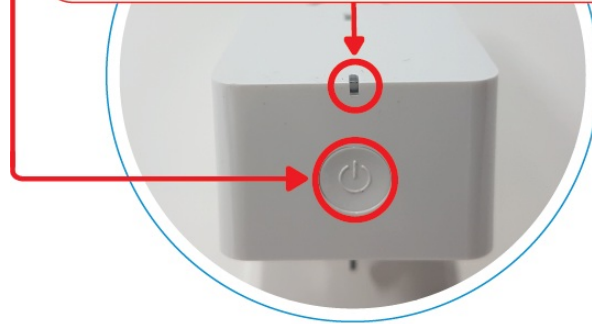
RECOMMENDED APP SETTINGS

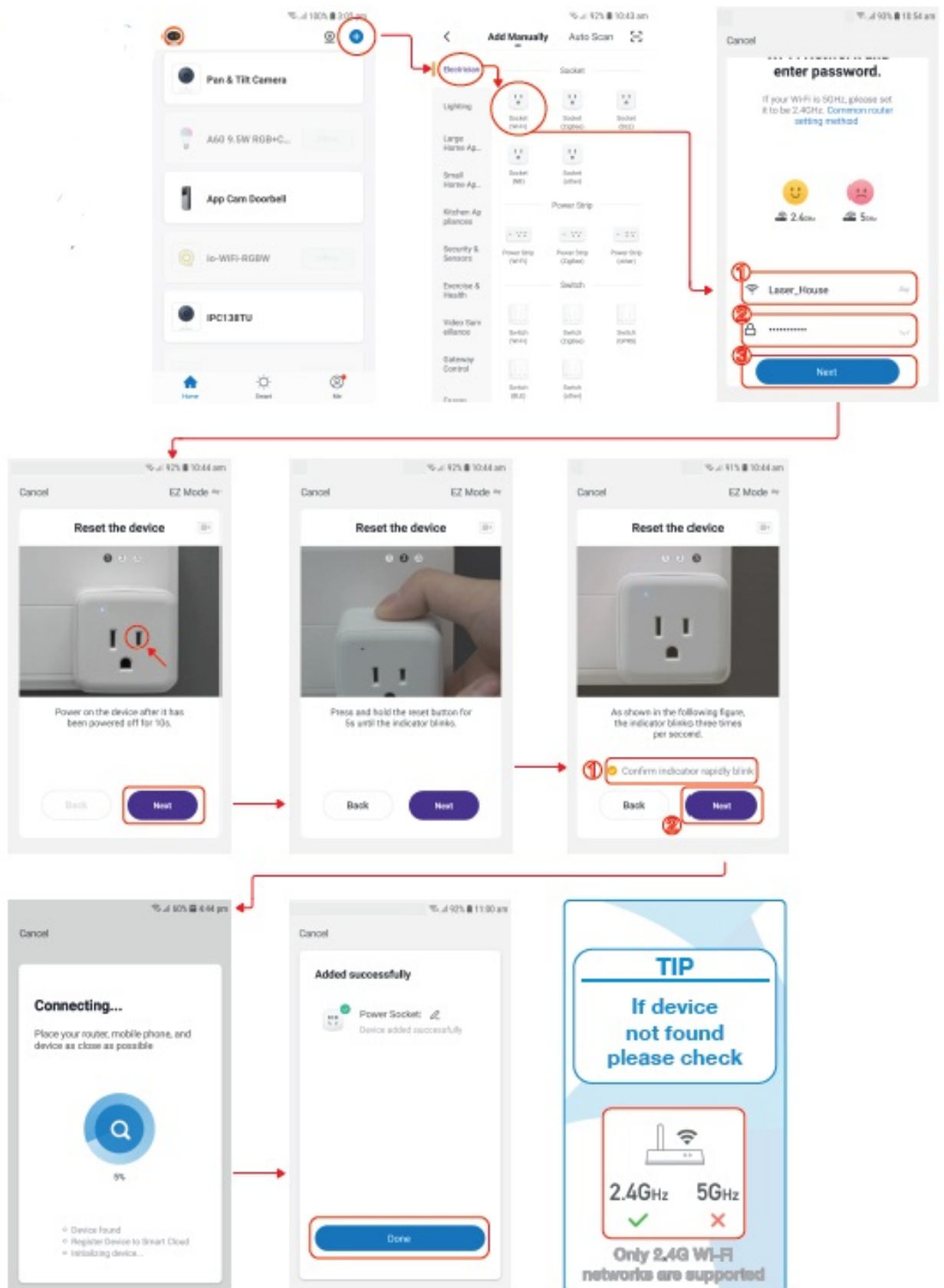


CONNECTING PLUG TO APP

While connected to power, press and HOLD button for approx 8 seconds to put device into pairing mode.

The LED indicator should start flashing BLUE quickly.





USING THE PLUG



PLUG SETTINGS

94% 10:52 am





Smart Plug - Party Speaker



Device Information



Tap-to-Run and Automation



Device Offline Notification

Offline Notification



Others

Share Device



Create Group



FAQ & Feedback



Check Device Network

Check Now



Check for Firmware Update



Remove Device

TROUBLESHOOTING

1. If device is not connecting while pairing to the app please check your Wifi username and password are correct and that you are only using 2.4Ghz Wifi connections as the 5Ghz band is not supported.
2. If the device is plugged in and turned on but not showing any signs of power, check any individual power switches that may be on the connected device.
3. All USB plugs and the main socket are controlled by the POWER ON/OFF switch in the App. There is no way to control the USB switches separately.
4. Instructions for Connecting Plug to App advised in this manual are for EZ pairing mode. If the LED light is flashing BLUE slowly then device is in AP Pairing Mode. You can press and HOLD the button again to put back into EZ pairing mode or select AP Mode in the App during the pairing process.

WARRANTY

Our goods come with guarantees that cannot be excluded under the Australian Consumer Law. You are entitled to a replacement or refund for a major failure and compensation for any other reasonably foreseeable loss or damage. You are also entitled to have the goods repaired or replaced if the goods fail to be of acceptable quality and the failure does not amount to a major failure.

Documents / Resources

	<p>laserco CSH-PLGUSBPM Plug with 2 x USB & Power Monitoring [pdf] User Manual CSH-PLGUSBPM Plug with 2 x USB Power Monitoring, Plug with 2 x USB Power Monitoring, Power Monitoring</p>
--	--

References

-  [Home - Connect SmartHome](#)
-  [Laser: The Ultimate Tech Hub for Home Entertainment, Audio, Smart Home & More](#)