

LASER SP-1824 Portable Fabric Speaker Max



LASER SP-1824 Portable Fabric Speaker Max User Manual

[Home](#) » [Laser](#) » LASER SP-1824 Portable Fabric Speaker Max User Manual 

Contents

- [1 LASER SP-1824 Portable Fabric Speaker Max](#)
- [2 WHAT'S IN THE BOX](#)
- [3 OVERVIEW](#)
- [4 TROUBLESHOOTING](#)
- [5 SPECIFICATIONS](#)
- [6 Documents / Resources](#)
 - [6.1 References](#)
- [7 Related Posts](#)



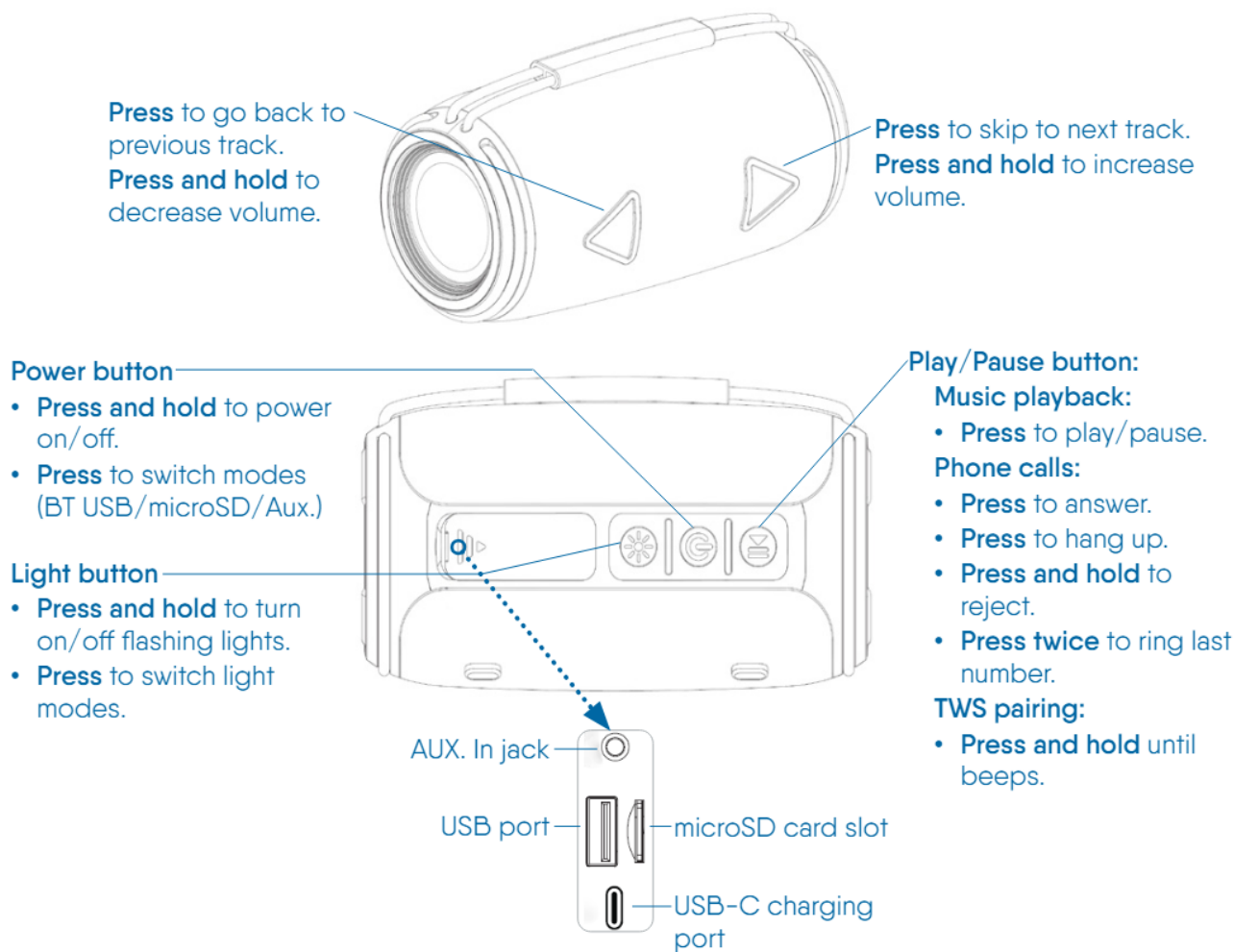
LASER SP-1824 Portable Fabric Speaker Max



WHAT'S IN THE BOX

- Portable Speaker
- USB-A to USB-C charging cable
- AUX cable
- User manual

OVERVIEW



CHARGING

- Fully charge the speaker before you start using it.
- Use the included cable to connect to a 5V USB wall charger, computer or power bank.
- A red light next to the charging port shows it's charging.
- When fully charged, the light goes off.

BLUETOOTH PAIRING

1. Turn on the speaker or press the Power button on the speaker to switch to Bluetooth mode.
2. Enable Bluetooth mode on your smartphone or device.
3. Select SP-1824 from the list of available devices.

NOTE

- If SP-1824 does not appear, retry from step 1.
- The speaker can pair with many devices, but only one can play audio at a time.

TWS PAIRING

Pair two SP-1824 speakers to create a stereo experience (dependent on the source), with one serving as the left channel and the other as the right channel. TWS pairing won't work if speakers are already paired via Bluetooth. If speakers are already paired, unpair them.

1. Press and hold the Play/Pause button until the speakers beep to enter TWS mode. They will sync with each other automatically.
2. Next, pair them with your device via Bluetooth (refer to the Bluetooth Pairing section).

USING A USB FLASH DRIVE OR MICRO SD CARD

1. Insert a USB flash drive or microSD card to play music automatically.
2. press the Power button to switch to USB/microSD mode.

CONNECTING AUDIO CABLE

1. Connect the included 3.5mm audio cable to both the speaker and audio source device.
2. When you connect the audio cable to the speaker, it will switch to Aux mode automatically.

TROUBLESHOOTING

- The speaker does not turn on:
- The battery could be dead. Charge using a compatible 5V USB power source.
- No sound from the speaker:
- The speaker volume is low or muted. Unmute or increase volume.
- Make sure your connecting device is not muted, or increased volume.
- No Bluetooth device is connected.
- Cannot pair Bluetooth device with the speaker:
- Keep the speaker next to your device for a stronger initial connection.
- Ensure the speaker is in Bluetooth mode. Press the Power button to switch modes.
- If the speaker's Bluetooth name is not found, refresh or search again. Wait up to 1 minute for the name to appear.
- If the speaker is paired to another device, disconnect before connecting with your device.

SPECIFICATIONS

- Bluetooth version: 5.3
- Bluetooth range: 10m
- Speaker: 8W x2
- Battery capacity: 1,500mAh
- Charging power: 5V/1A

Product support

E: support@laserco.com.au

P: (02) 9870 3355

Documents / Resources

	<p>LASER SP-1824 Portable Fabric Speaker Max [pdf] User Manual</p> <p>SP-1824 Portable Fabric Speaker Max, SP-1824, Portable Fabric Speaker Max, Fabric Speaker Max, Speaker Max, Max</p>
-----------------------------------------------------------------------------------	-----------------------------------------------------------------------------------------------------------------------------------------------------------------------------------------------------------

References

- [User Manual](#)

Manuals+ Privacy Policy

This website is an independent publication and is neither affiliated with nor endorsed by any of the trademark owners. The "Bluetooth®" word mark and logos are registered trademarks owned by Bluetooth SIG, Inc. The "Wi-Fi®" word mark and logos are registered trademarks owned by the Wi-Fi Alliance. Any use of these marks on this website does not imply any affiliation with or endorsement.