



LASER TECH PointMan Mobile Mapping Software User Guide

[Home](#) » [LASER TECH](#) » LASER TECH PointMan Mobile Mapping Software User Guide 



Mobile Mapping Software
User Guide

Contents

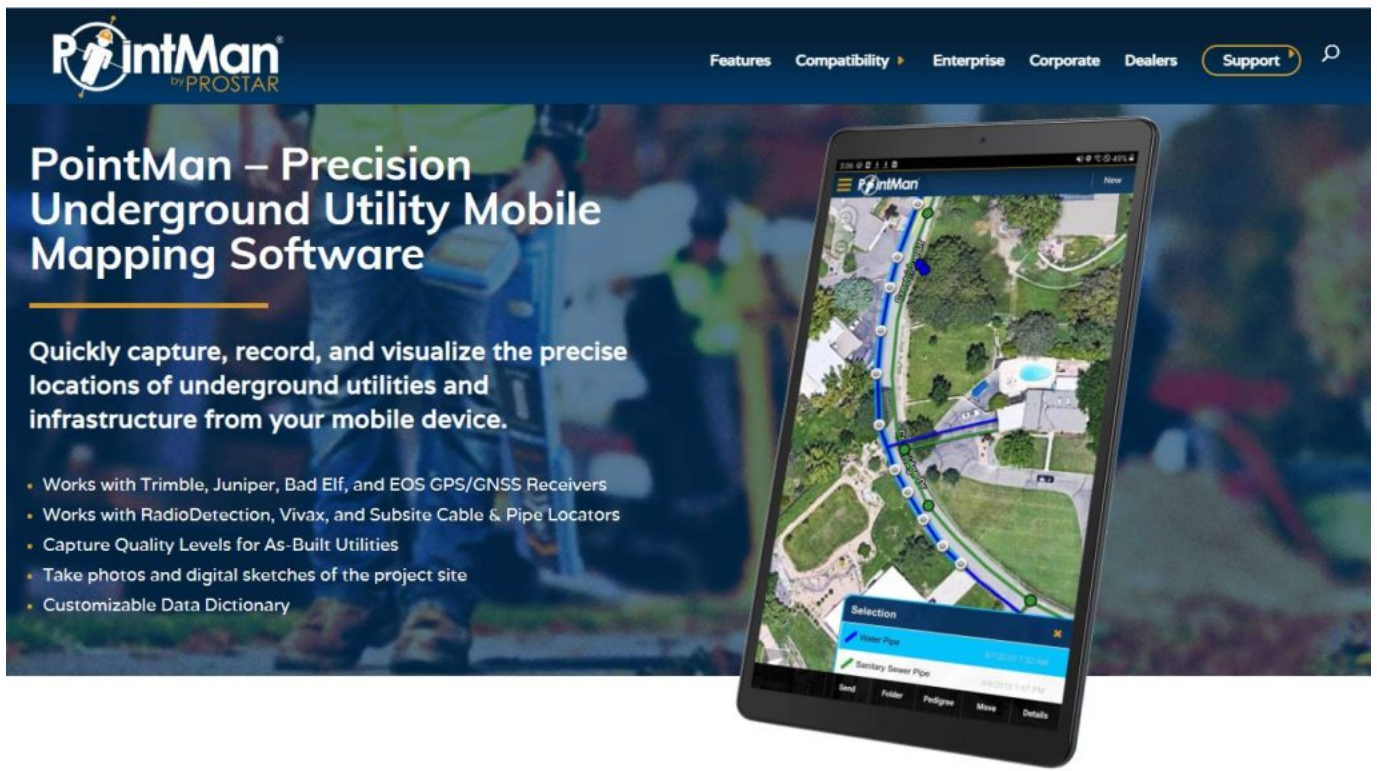
- [1 OVERVIEW](#)
- [2 Start Pointman and Connect Laser](#)
- [3 Product Resources](#)
- [4 Contact LaserTech](#)
- [5 Documents / Resources](#)
 - [5.1 References](#)
- [6 Related Posts](#)

OVERVIEW

PointMan is a patented mobile mapping software application that captures, records, and displays the precise location and the associated metadata to subsurface and surface infrastructure. In addition to a full interface with popular GPS products, it also supports the LaserTech TruPulse rangefinders.

Compatible products

- TruPulse 360/R
- Pointman ver 5.2

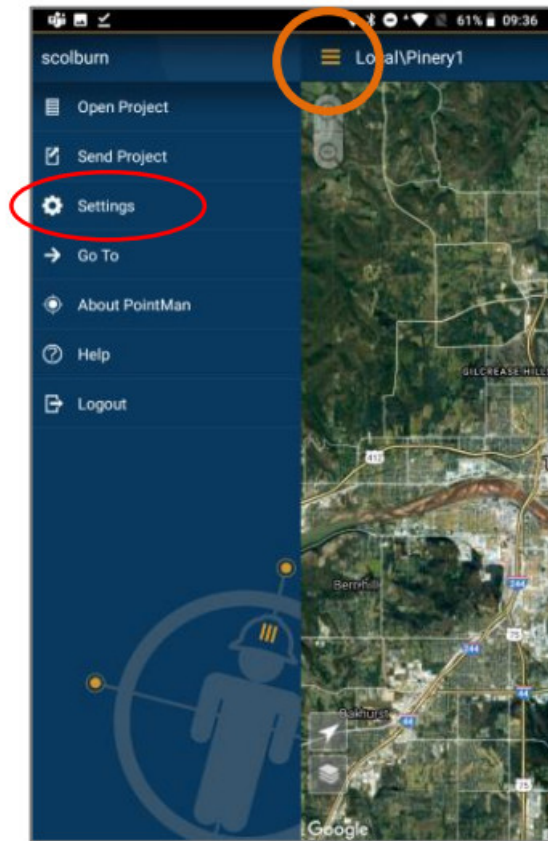


Type of Laser Methods available in Pointman

- Distance/Azimuth
- Measure Slope Distance, Inclination & Azimuth

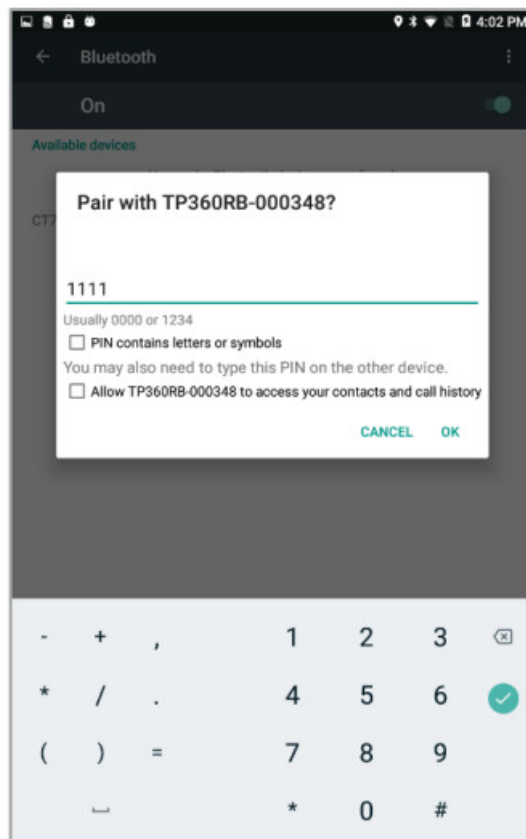
Start Pointman and Connect Laser

1. TAP MENU Tap Settings To configure TruPulse	2. TAP Configure Bluetc
--	-------------------------



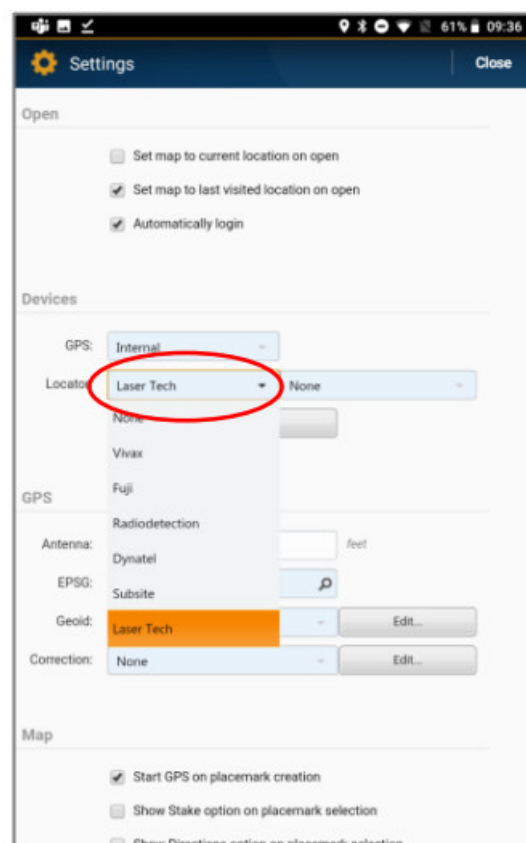
3. PAIR With Laser Passcode = 1111

4. CONFIRM Pairing Ta



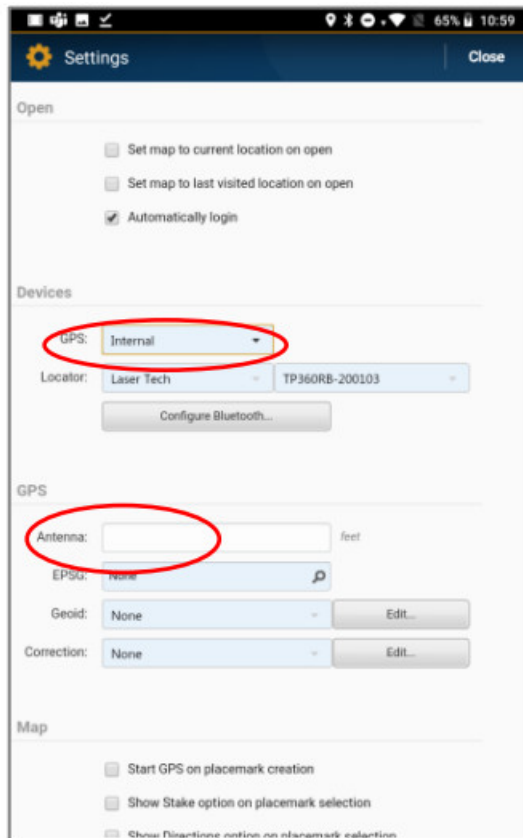
5. TAP LOCATOR Select Laser Tech

6. TAP NAME Select Tr



7. TAP GPS Select type Antenna Height = Laser Height

8. TAP CLOSE After Co



9. TAP NEW

10. SELECT POINT Feature



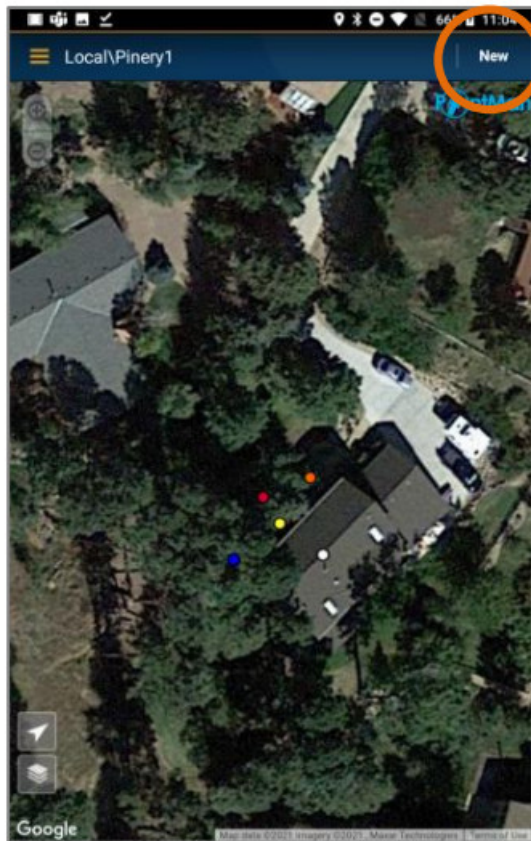
11. FIRE LASER At Feature Chirp will sound TAP FINISH

12. FEATURE DISPLAY



13. TAP NEW

14. SELECT LINE Featu



15. FIRE LASER At Points on Line Chirp will sound for each TAP FINISH

16. FEATURE DISPLAY



Product Resources

Product Page/User's Guides:

<https://www.lasertech.com/TruPulse-Laser-Rangefinder.aspx>

TRUPULSE® SERIES

Compact and Affordable.

- Small enough to fit inside a vest pocket
- Easy access to measurements and menus
- GPS and GIS software integration



[Home](#) > [Professional Measurement](#) > [Products](#) > [TruPulse Series](#)

TruPulse Laser Rangefinder

The Most Compact and Versatile Laser Rangefinder

[Overview](#)

[200 Series](#)

[360 Series](#)

[Measurement Solutions](#)

[Accessories](#)

[Support](#)

TruPulse Overview

LTI's dedication to high quality and unmatched innovation has allowed the TruPulse series to withstand the test of time. It's almost an insult to even call these powerful measurement tools a "Laser Rangefinder" because their capabilities go far beyond just measuring a range. You can instantly measure slope distance, inclination and azimuth* and calculate horizontal and vertical distance - all with a single push of a button.

The TruPulse 200L and 200 models have just been just been revamped and now are better than ever with new enhancements and improvements. Offering higher accuracy, better target acquisition and higher range resolution these lasers are just another example of LTI's dedication to bringing the highest level of quality and innovation to the world.

From the 200L, our most affordable professional laser rangefinder, to the 200 and the 200X, you are able to capture the measurement needed with accuracy, confidence and ease of use.



TruPulse 200 Series
Laser Range finders

Quote Request

TruPulse 200 - Ft/Yds Version

Quantity:

[Add](#)

[Submit Quote](#)

Videos / Webinars

[TruPulse and Face Profiler Systems Working in Heavy Rain Video](#)

[TruPulse 360 Video](#)

[TruPulse 360 Calibration Video](#)

[TruPulse 360 R Video](#)

[View More](#)

Downloads

[TruPulse 200 Specifications](#)

[TruPulse 200L Specifications](#)

[TruPulse 200X Specifications](#)

[TruPulse 360 Specifications](#)

[TruPulse 360R Specifications](#)

[TruPulse Series Specifications](#)

[TruPulse Mobile Mapping Solutions](#)

[Forestry Source - TruPulse 200X Review](#)



<https://pointman.com/features/>



Designed to Work Offline

Working in the field can often mean working on project sites located in remote areas where cell service can be poor or simply unavailable. PointMan is designed to address these conditions and to work offline. Now you can provide immediate and measurable value anytime and anywhere with the highest level of confidence.



Meets or Exceeds Industry Data Quality Standards

Now you can easily meet industry mapping standards using PointMan. PointMan's patented Precision & Pedigree data collection processes are designed to meet Subsurface Utility Engineering mapping requirements and comply with US as well as international mapping standards including ASCE 38-02 and CSA S-250-11.

ACCURACY

Supports Survey and Mapping Grade GPS Units	+
Multiple Correction Sources Available	+
Stakeout for Points and Lines	+
Real-Time Datum Translations	+
Geoid Support	+

ACCOUNTABILITY

User Information & Location on Every Feature	+
Stores Attributes for each Point and Line	+
Supports PDF and Forms in the Field	+
Attach Photos and Forms to Any Feature	+
Easily Document As-Built Information	+

Contact LaserTech

Questions regarding the interface to Pointman or our laser products?



Please contact us at:

1.800.280.6113 or

1.303.649.1000

info@lasertech.com

Laser Technology, Inc.

6912 S. Quentin St.

Centennial, CO 80112

www.lasertech.com

Documents / Resources



[LASER TECH PointMan Mobile Mapping Software](#) [pdf] User Guide
PointMan Mobile Mapping Software, PointMan, Mobile Mapping Software

References

- [Laser Tech | Laser Technology Company | Laser Measurement Tools](#)
- [Laser Tech | Laser Technology Company | Laser Measurement Tools](#)
- [TruPulse Series - Laser Tech](#)