



LASCAR EL-WiFi-DULT Data Logger User Guide

[Home](#) » [LASCAR](#) » LASCAR EL-WiFi-DULT Data Logger User Guide 

Contents

- [1 LASCAR EL-WiFi-DULT Data Logger](#)
- [2 ACCESSORIES](#)
- [3 INCLUDED IN THE BOX](#)
- [4 Easylog Software](#)
- [5 Battery Life and Power Supply](#)
- [6 Documents / Resources](#)
- [7 Related Posts](#)



LASCAR EL-WiFi-DULT Data Logger



Dual Channel Ultra Low Temperature Cryogenic Vaccine WiFi Data Logger

- Measurement range -100 to +100°C (-148 to +212°F)
- T-type probe on 1m cable
- Dual channel recording through two external thermocouple probes
- Wirelessly stream and view data on the EasyLog Cloud, App or on a PC
- View and analyse multiple sensors, including graphing of historic data
- Configurable high and low alarms with indicator
- Easy sensor set-up using free PC software or App

The EL-WiFi-DULT is designed to monitor vaccines in cryogenic dry ice storage.

Data is streamed wirelessly over any compatible WiFi network and can be viewed on a PC using free software or on the EasyLog Cloud or App.

To configure the sensor for use on a given wireless network, either connect it via USB to a PC running EasyLog WiFi software on the network, or configure wirelessly using the EasyLog Cloud app on a mobile phone with access to the network. The sensor can then be placed anywhere within range of the network. If the sensor temporarily loses connectivity with the network, it will log readings until it is able to communicate again with the PC application or EasyLog Cloud (max 30 days at 10 second sample interval).

The sensor is IEEE 802.11bgn* (2.4GHz) compliant, supports WEP, WPA/WPA2 encryption and enterprise networks (PEAP, TTLS, FAST).

EL-WiFi-DULT has a protection rating of IP40. The unit is freestanding, but can be attached to a wall or surface using the bracket provided. The unit can be clipped in and out of the bracket as required.

ACCESSORIES

- **PSU-5VDC-USB-USA:** USB Mains Power Adapter for USA
- **PSU USB-UK:** USB Mains Power Adapter for UK
- **PSU USB-EU:** USB Mains Power Adapter for EU
- **EL-P-TC-T-ULT:** Replacement T-type Thermocouple probe

INCLUDED IN THE BOX

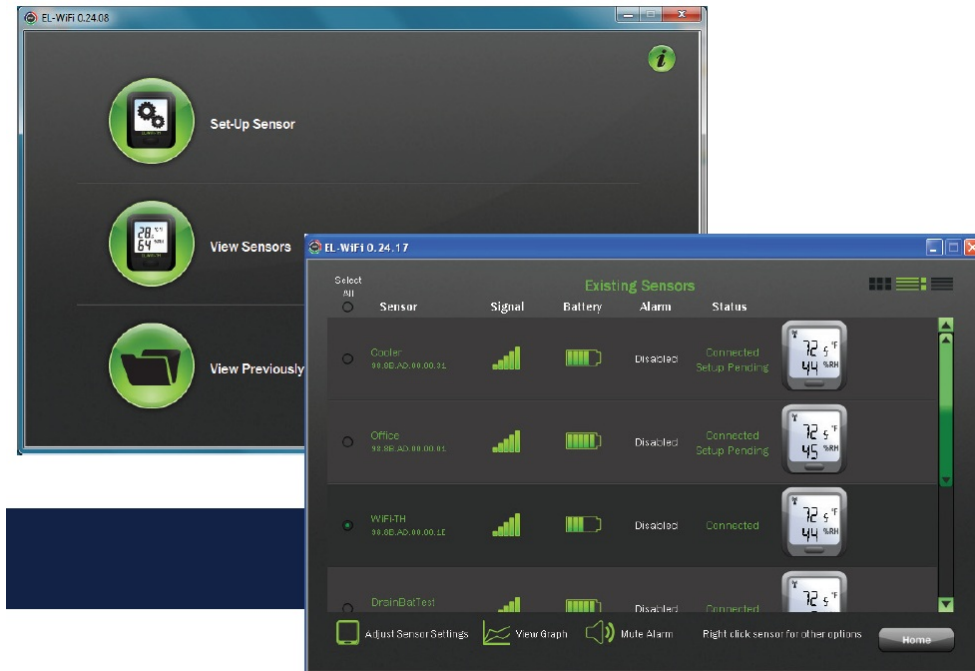
- **EL-WIFI WALL BRACKET:** Wall mounting bracket for EL-WiFi sensors

- **EL-P-TC-T-ULT:** Thermocouple probe
- **CABLE USB A-MICRO B:** USB Type A to Micro B

CALIBRATION CERTIFICATES NOW AVAILABLE

Lascar now offers a Traceable Calibration Certificate Service on Temperature Data Loggers. Using reference equipment which has been calibrated by a UKAS/NIST accredited laboratory and using apparatus traceable to national or international standards. For more information please see www.lascarelectronics.com.

Easylog Software



Lascar's WiFi software is available as a free download from: www.lascarelectronics.com/software/easylog-wifi. Easy to install and use, EL-WiFi-WIN allows easy connection of sensors to a WiFi network. The user can select where data is stored – the PC or the Cloud.

When setting up your logger, make sure you select the T-Type probe.

EasyLog Cloud Your Data. Anytime.

EasyLog Cloud harnesses the power of cloud computing for data logging and alert notifications, and allows you to manage multiple data logging channels completely remotely. The system meets all your needs. Perfect for compact systems, or corporate solutions worldwide around the globe.

You will need to create an account at www.lascarelectronics.com to access your cloud-connected data logger.

Features at a glance



Store your data logging records securely on the Cloud



Connect multiple users with variable account privileges

Battery Life and Power Supply

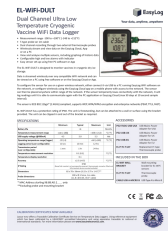
The battery can be recharged (unit must be between 0 – 40 °C) via a PC, a USB +5V wall adapter, or a portable USB battery pack using the USB lead provided. It can also be permanently powered by a USB wall adapter or USB battery pack. Readings may be affected while the internal battery is being charged. However, once charged, continued connection of the charger will have no effect.

Battery life is dependent on: transmission period, WiFi encryption method, WiFi encryption key rotation frequency (determined by the router/access point), signal strength between router/access point and WiFi device, presence volume and type of WiFi traffic from other devices, sample rate and operating temperature.

Specifications liable to change without prior warning

www.lascarelectronics.com/data-loggers

Documents / Resources

	<p>LASCAR EL-WiFi-DULT Data Logger [pdf] User Guide</p> <p>LASCAR, EasyLog, EL-WiFi-DULT, Dual Channel, Ultra Low Temperature, Cryogenic, Vaccine, WiFi Data Logger</p>
---	--