

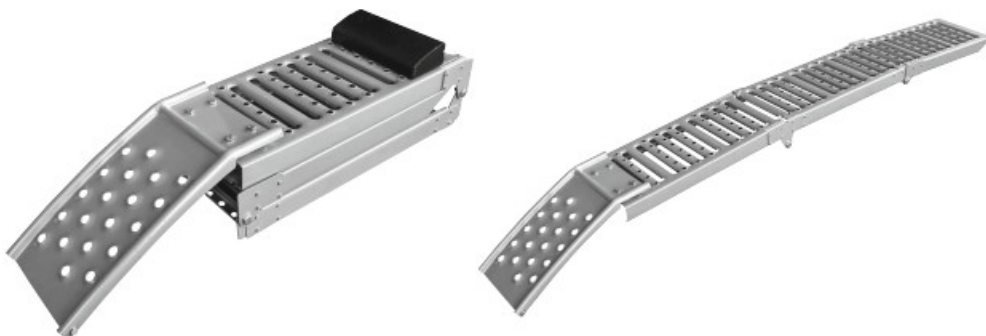


## LAS 10607 Loading Ramp Foldable Instruction Manual

[Home](#) » [LAS](#) » LAS 10607 Loading Ramp Foldable Instruction Manual 

**LAS**  
auto- und camping zubehör

10607 Loading Ramp Foldable  
Instruction Manual



## Contents

[1 10607 Loading Ramp](#)

[Foldable](#)

[2 INTENDED USE](#)

[3 SCOPE OF DELIVERY](#)

[4 SPECIFICATIONS](#)

[5 SAFETY INSTRUCTIONS](#)

[6 OPERATING INSTRUCTIONS](#)

[7 MAINTENANCE AND CARE](#)

[8 CONTACT INFORMATION](#)

[9 Documents / Resources](#)

[9.1 References](#)

[10 Related Posts](#)

## 10607 Loading Ramp Foldable



### WARNING

Read the **operating** instructions through carefully prior to initial use and observe all of the safety notes! Store original packaging, proof of purchase as well as these instructions for future reference! Not observing such may lead to personal injury, damages to the device or your property! Prior to initial use, check the contents of the packaging to ensure that they are in perfect condition and complete!

## INTENDED USE

The folding loading ramp is designed for loading motorcycles and scooters. When using two loading ramps, ride-on lawnmowers, quads, wheelchairs and small construction machinery may be loaded. When folded, the ramp may also be used as installation ramp for cars.

This device is not designed to be used by children and people with limited mental capacities or those without experience and/or knowledge. Children must be supervised to ensure that they do not play with the device.

The device is not designated for commercial use.

Any other use or modification to the device is considered improper usage and brings considerable risks with it. EAL GmbH accepts no liability for damages caused as a result of improper use.

## SCOPE OF DELIVERY

1 x	Loading ramp, folding with carry handle
1 x	Ramp base with safety chain
1 x	Wheel stop
4 x	Screw M10 x 20 with lock nut (pre-mounted)
2 x	Screw for M8 x 40 with nut and washer
2 x	Screw for M8 x 20 with nut and washer
2 x	Screw for M8 x 15 with washer
1 x	Screw for M6 x 16 with nut and washer

## SPECIFICATIONS

Maximum payload:	800 kg when folded 250 kg
Size (L x W x H): when folded	Approx. 200 x 26 x 5 cm approx. 90 cm with loading angle
Loading height:	Approx. 102 cm
Height of the installation ramp:	Approx. 18 cm
Maximum tyre width:	225 mm
Weight:	Approx. 14 kg
Material:	Steel

## SAFETY INSTRUCTIONS

- Keep children away and do not allow children to operate this device!
- Only use this product as intended!
- Do not manipulate or dismantle the device!
- For your own safety, only use accessories and spare parts that are stated in these Instructions or are recommended by the manufacturer!
- The folding loading ramp is not suitable for increasing the payload of an existing ramp

### Use as loading ramp

- Only use as a loading ramp for unloading and loading on hard and even surfaces.
- Do not exceed the maximum payload of 250 kg. Observe the maximum payload of the tailboard and bed (consult the manual of your vehicle).
- Keep hands, feet, tools or other devices away from the ramps. Do not lie under the ramp.
- Do not use a damaged or not fully functional ramp. Have a damaged ramp repaired by the manufacturer or an authorised workshop.
- Do not exceed the bed height of 102 cm.
- Always secure the ramp base with the safety chain to prevent slippage.
- Keep the ramp clean of water, mud and oil.
- The ramp is not suitable for wheels or chains made of steel.
- Trailers may only be loaded/unloaded when attached to a vehicle. Let down the supports.
- Secure the vehicle to be loaded to prevent it from rolling away (put into gear, set automatics to P, activate the parking break, put wedges under the wheels).
- Always drive straight onto the ramp and keep central. When loading double-track vehicles, pay attention to the track width and align the ramps so that they are parallel.
- When driving onto the ramp, avoid sudden braking or starts.

### Use as installation ramp

- Only use the installation ramp on hard and even, non-slip surfaces.
- Do not exceed the maximum payload of 800 kg.
- Do not use a damaged or not fully functional ramp. Have a damaged ramp repaired by the manufacturer or an

authorised workshop.

- Keep the ramp clean of water, mud and oil.
- Secure the vehicle to prevent it from rolling away (put into gear, set automatics to P, activate the parking break, put wedges under the wheels).
- Do not use any other lifting gear in conjunction with the ramp.

## OPERATING INSTRUCTIONS

### INSTALLATION

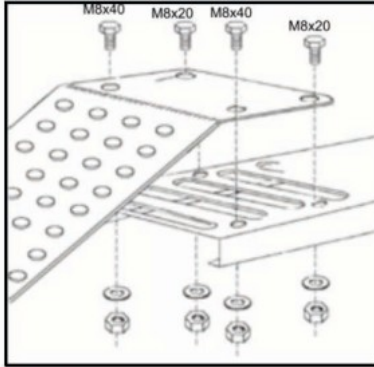


Figure 1

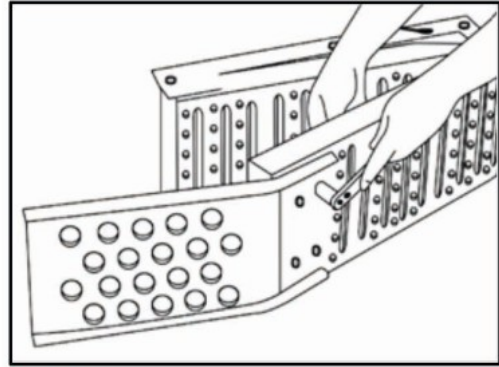


Figure 2

Place the folded loading ramp on the side, and release the carry handle. Unfold the upper section. Secure the ramp base using 2 screws M8 x 40, 2 screws M8 x 20 and washers and nuts to the upper section of the ramp, see Figure 1. The side struts of the loading must face downwards. See Figures 3 and 4.



Figure 3

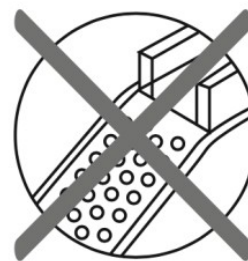


Figure 4

Secure the safety chain using the M6 x 16 screw and washer with nut to the end of the ramp base. For use as a installation ramp, also attach the wheel stopper using 2 M8 x 15 screws and washers with nuts to the last cross-bar of the upper section before the joint. The steep side of the wheel stopper must point in the direction of the joint, see Figure 5.



Figure 5



Figure 6

### USE AS LOADING RAMP PREPARATION:

Unfold the loading ramp fully, see Figure 6. Place the loading ramp with the ramp base on the bed.

If you wish to load a double-track vehicle, place the ramps to correspond with the track width of the vehicle you wish to load, with the ramp base on the bed. Align the ramps so that they are parallel.

Secure the loading ramps with the safety chain to prevent slippage.

#### **LOADING:**

Drive the vehicle to be loaded straight up to the loading ramp. Check to ensure that the wheels form a line with the ramp. If this is the case, drive slowly and evenly over the ramp onto the bed.



When driving onto the ramp, avoid sudden braking or starts.

#### **USE AS INSTALLATION RAMP**

##### **PREPARATION:**

Fold the loading ramp together. Mount the wheel stopper as described above.

Place the ramp straight, with the ramp base in front of the wheels of the vehicle. Check to make sure that the front aprons, spoilers and other parts of the vehicle cannot come into contact with the ramp. Push the ramps up against the wheels.



##### **DRIVING OVER THE RAMPS**

Find a second person to assist you with directions. Drive carefully onto the ramp and up to the wheel stoppers. Drive slowly, otherwise there is a risk of driving over the wheel stoppers which will result in damage to the vehicle. If you notice that driving has caused a ramp to slip, immediately stop and check to see whether you can reverse without risks. If so, reverse and realign the ramps. When the vehicle is on the ramps, secure it to prevent it from rolling away (activate the parking brake, put into gear, set automatics to „P“, put wedges under the wheels).



## **MAINTENANCE AND CARE**

#### **MAINTENANCE:**

Before each use, check the screw connections to ensure they are tight. Check the loading ramp for cracks and deformation.

#### **CARE:**

Lubricate the joints regularly with oil, e.g. bicycle oil. Immediately repair paint damage to prevent corrosion.





#### **NOTES REGARDING ENVIRONMENTAL PROTECTION**

Please dispose of this device via the recycling bin or the public/municipal collection points.

The materials can be recycled. You make an important contribution to protecting our environment by recycling, material utilisation or other forms of reusing waste equipment!

## **CONTACT INFORMATION**

**EAL GmbH**

Otto-Hausmann-Ring 107	 +49 (0)202 42 92 83 0	 <a href="mailto:info@eal-vertrieb.com">info@eal-vertrieb.com</a>
42115 Wuppertal, Germany	 +49 (0) 202 42 92 83 – 160	 <a href="http://www.eal-vertrieb.com">www.eal-vertrieb.com</a>



**LAS**  
auto- und camping zubehör

## Documents / Resources

	<p><a href="#">LAS 10607 Loading Ramp Foldable</a> [pdf] Instruction Manual 10607 Loading Ramp Foldable, 10607, Loading Ramp Foldable, Ramp Foldable, Foldable</p>
--	--

## References

-  [vertrieb.com](http://www.eal-vertrieb.com)
-  [Vertrieb Kfz-, Caravan-, Anhänger-und, Fahrradträger und Zubehör](#)
- [User Manual](#)

[Manuals+](#), [Privacy Policy](#)

This website is an independent publication and is neither affiliated with nor endorsed by any of the trademark owners. The "Bluetooth®" word mark and logos are registered trademarks owned by Bluetooth SIG, Inc. The "Wi-Fi®" word mark and logos are registered trademarks owned by the Wi-Fi Alliance. Any use of these marks on this website does not imply any affiliation with or endorsement.