

LARQ Pitcher PureVis Unique Two Stage Process



# LARQ Pitcher PureVis Unique Two Stage Process User Guide

[Home](#) » [LARQ](#) » LARQ Pitcher PureVis Unique Two Stage Process User Guide 

## Contents

- [1 LARQ Pitcher PureVis Unique Two Stage Process](#)
- [2 Product Usage Instructions](#)
- [3 LARQ Pitcher PureVis™: The first multi-stage purification water pitcher](#)
- [4 LARQ Pitcher PureVis](#)
- [5 Getting started](#)
- [6 Modes & notifications](#)
- [7 The LARQ App: Your personal control center](#)
- [8 Product care](#)
- [9 Safety](#)
- [10 Removing the rechargeable battery](#)
- [11 Warnings & cautions](#)
- [12 Documents / Resources](#)
  - [12.1 References](#)
- [13 Related Posts](#)



**LARQ Pitcher PureVis Unique Two Stage Process**



### **Specifications:**

- Product Name: LARQ Pitcher PureVisTM
- Technology: Multi-stage purification with PureVisTM technology
- Filters: Plant-based filters tested to NSF/ANSI 42, 53 & 401 standards
- Contaminants Removed: Lead, chlorine, PFAS/PFOS, HAA5, pharmaceuticals, mercury, VOCs, cadmium, and particulates
- Additional Feature: PureVisTM technology inhibits biocontaminant growth

### **Product Usage Instructions**

#### **1. Getting Started:**

- Remove the PureVisTM Wand from the LARQ Pitcher PureVisTM and wash the pitcher.
- Charge the PureVisTM Wand using the magnetic charger and gold charging pins.
- Soak the filter in water for 10 minutes before first use.
- Install the filter into the reservoir, snap on the lid, and fill with tap water. Pour out the first batch.
- The PureVisTM Mode will activate when the pitcher is filled. A blue light indicates filtration. Manually activate a 30-second cycle with the Lambda button.
- Enjoy pure water beyond filtration!

### **Frequently Asked Questions (FAQ):**

1. Q: What should I do if I notice black carbon dust in the water?

A: This is harmless carbon from the plant-based filter media. Run a batch through the filter and pour out to resolve.

2. Q: How often should I change the filter?

A: The filter should be replaced as per manufacturer's recommendations or when water quality is affected.

3. Q: Can I use the LARQ Pitcher PureVisTM with other types of water sources?

A: The pitcher is designed for use with tap water. Using other water sources may affect performance.

4. Q: How long does a full charge last on the PureVisTM Wand?

A: A full charge typically lasts for several cycles of water purification.

## **Now, you've got the magic touch**

### **We are LARQ**

LARQ was started with a simple vision where innovative technology can be combined with inspirational design to help people access pristine drinking water easily and sustainably.

### **Drink brilliantly**

Our products look as good as they make you feel. We are confident that these are the most beautiful hydration products in the world that make it easy to make the healthier and more sustainable choice – anytime, anywhere.

### **Part of the solution**

A million plastic bottles are bought around the world every minute. Only 7% of those collected were turned into new bottles. Instead, most plastic bottles end up in landfills or in the ocean.

Every single LARQ Filter can help eliminate 500+ single-use bottles. By switching to the LARQ Pitcher PureVis™, you are part of the change. In addition, a portion of proceeds go to 1% for the Planet to benefit the environment and bring safe drinking water to billions.

## **LARQ Pitcher PureVis™: The first multi-stage purification water pitcher**

Traditional filters simply trap contaminants where they can quickly multiply and reverse contaminate your drinking water. The LARQ Pitcher PureVis™ neutralizes contaminants by going beyond filtration\*†.

### **Better filtration**

Our innovative plant-based filters are independently tested to NSF/ANSI 42, 53 & 401 standards to be effective against pollutants like lead\*\*, chlorine, PFAS/ PFOS\*\*, HAA5\*\*, pharmaceuticals\*\*, mercury, VOCs, cadmium, and particulates†.

### **PureVis™ technology**

Proprietary PureVis™ technology improves the quality of your water by inhibiting bio- contaminant\* growth.

\*In lab testing, PureVis™ inhibits and deactivates naturally occurring heterotrophic bacteria that may cause odor and impact the taste of water compared to non-UV treated water pitchers.

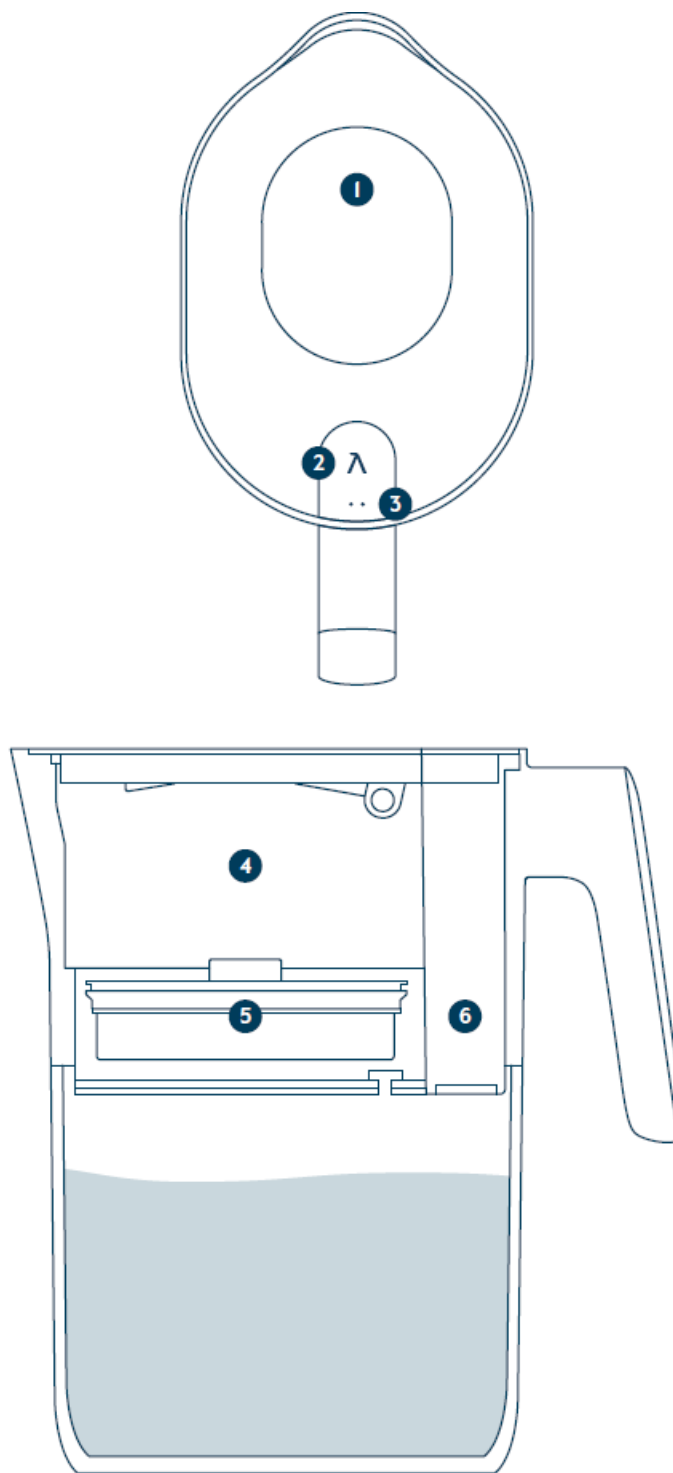
\*\*with Advanced Filter.

† Tested to NSF/ANSI 42, 53 & 401 standards. For details on specific contaminant removal visit

[www.livelarq.com](http://www.livelarq.com).

## **LARQ Pitcher PureVis**

1. Fill flap
2. Λ Lambda button
3. Charging pins
4. Hopper
5. LARQ Filter
6. PureVis™ Wand



## Getting started

1. Remove the PureVis™ Wand from the LARQ Pitcher PureVis™. Give your LARQ Pitcher PureVis™ a good wash before use.
2. Wake up your LARQ Pitcher PureVis™ by simply charging the PureVis™ Wand. Connect the magnetic charger to the gold charging pins on top of the PureVis™ Wand. We recommend a full charge to kick things off right.
3. Remove the filter from its packaging and soak the filter in water for 10 minutes before first use.
4. Install the filter into the reservoir and put the filter lid on. The lid should snap into place. Fill up the reservoir with tap water. Pour out the first batch.\*
5. The PureVis™ Mode will automatically activate after the LARQ Pitcher PureVis™ is completely filled. A blue breathing light indicates that the LARQ Pitcher PureVis™ is on as water is filtered through. A 30-second PureVis™ cycle can also be manually activated by pressing the λ Lambda button.

6. Pour yourself a glass of water and enjoy pure water beyond filtration!

**\*Note:** you may notice some black carbon dust in the water on your first use or after a prolonged period of not using the LARQ Pitcher PureVis™. This is harmless carbon from our plant-based filter media. If desired, simply run a batch through the filter and pour out.



## Modes & notifications

### PureVis™ Wand modes



#### PureVis™ Mode

Breathing sky blue light – Activated automatically upon fill or by a single press of the  $\Lambda$  Lambda button.



#### Self-cleaning Mode

Breathing sky blue light – Activated automatically every 6 hours for 60 seconds.

### Filter life notifications



#### **<20% filter life remaining**

Orange light will flash 3x prior to PureVis™ Mode. Time to order a replacement filter!



#### **0% filter life remaining**

Solid orange light (5 seconds) prior to PureVis™ Mode. Swap it out for a new one!

After a new filter is installed, hold down the Λ Lambda button for 5 seconds (the indicator light will turn white for 5 seconds followed by a flash of blue light).

### **Modes & notifications**

#### **Check filter life**

Simply activate PureVis™ (single press of the Λ Lambda button.)

#### **Battery status**



#### **Breathing green light**

I'm charging!



#### **Steady green light**

I'm fully charged!



#### **Flashing green light**

Low on battery. I will flash twice before a cleansing mode.



#### **Red solid light or flashing purple light?**

Oh no! Something is wrong. Go to [livelarq.com/warranty-claim](https://livelarq.com/warranty-claim)

Disconnect the charging cable from the power supply when not in use. Use a power supply with 1 Amp max current rating.

DO NOT charge with any other magnetic charger other than the charger cable provided with your LARQ Pitcher PureVis™.

### **The LARQ App: Your personal control center**

Unlock the full potential of the LARQ Pitcher PureVis™ with the LARQ App.



#### **Insights & full custom controls**

Track filter performance, household water consumption, and gain access to a full suite of controls (like travel lock, customizing PureVis™ power, and more).



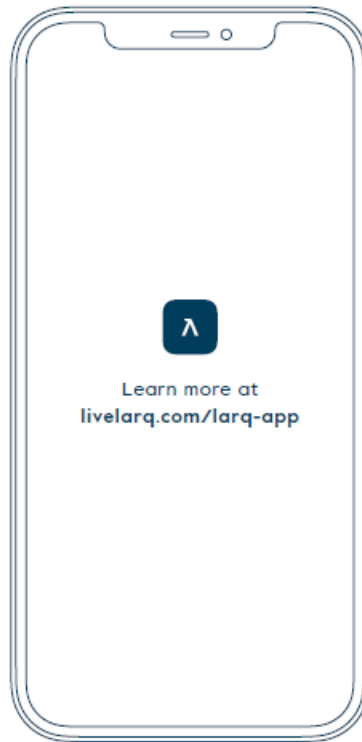
### Filter recommendations

It's all in the numbers. Get custom filter recommendations based on your local water quality and your unique household needs.



### Intelligent filter life tracking

Take the guesswork out of filter replacements and stop counting the days. Smart sensors track the volume of water consumed by your household – not some arbitrary timeframe.



### Product care

PureVis™ technology activates automatically in the background to help keep your LARQ Pitcher PureVis™ clean\*. However, we do recommend washing the LARQ Pitcher PureVis™ (it's dishwasher-safe!\*\*\*) every 2-3 months when you need to replace the filter for a quick reset clean.

Before washing the LARQ Pitcher PureVis™, remove the PureVis™ Wand and hand wash with mild soap and warm water. Don't worry, the PureVis™ Wand is completely waterproof! Do not put the PureVis™ Wand in the dishwasher.

We also recommend that you give the PureVis™ Wand a full charge every time you replace the filter.

\*In lab testing, PureVis™ prevents and deactivates naturally occurring heterotrophic bacteria that may cause odor and impact the taste of water compared to non-UV treated water pitchers.

\*\*\*Put smaller parts like the LARQ Pitcher PureVis™ lid, hopper, and filter lid in the top tray of the dishwasher. Do NOT put the PureVis™ Wand in the dishwasher, handwash only.

### We're here to help

Register for our warranty program at [livelarq.com/register](https://livelarq.com/register) and you'll also receive special offers and expedited service.

Have questions about the LARQ Pitcher PureVis™? Head over to [livelarq.com/support](https://livelarq.com/support) for FAQs or contact our customer support team at [hello@livelarq.com](mailto:hello@livelarq.com).

### Love LARQ?

Us too. Share a photo of your LARQ Pitcher PureVis™ with us and we'll post it!  
@livelarq #DrinkBrilliantly

#### Disclaimer

Users of the LARQ Pitcher PureVis™ do so at their own risk. Neither LARQ nor its retail partners assume any responsibility or liability for any injuries or damages, physical or otherwise, resulting, directly or indirectly, from the use of this product. LARQ reserves the right to revise this publication and to make changes from time to time in the contents thereof without obligation to notify any person of such revision or changes.

Model may be changed for improvements without notice.

## Safety

Please unplug the magnetic charging cable when not in use. Store the charging cable away from metal objects to avoid connecting to other metal pieces which may damage the charging cable.

This appliance is not intended for use by persons (including children) with reduced physical, sensory or mental capabilities, or lack of experience and knowledge, unless they have been given supervision or instruction concerning use of the appliance by a person responsible for their safety.

Children should be supervised to ensure that they do not play with the appliance.

## Safety



The PureVis™ Wand should be used exclusively with the LARQ Pitcher PureVis™. The efficacy of the UV water purification has only been tested with the LARQ Pitcher PureVis™. LARQ cannot guarantee the UV's effectiveness when used with alternative water pitcher designs that have not been fully tested.

It must only be supplied at safety extra low voltage corresponding to the marking on the appliance.

This appliance contains batteries that are non-replaceable.

## Disposal

- The PureVis™ Wand contains a rechargeable lithium-polymer battery that must be disposed of properly.
- DO NOT allow contact with fire.
- Contact your local town or city officials for battery disposal information.

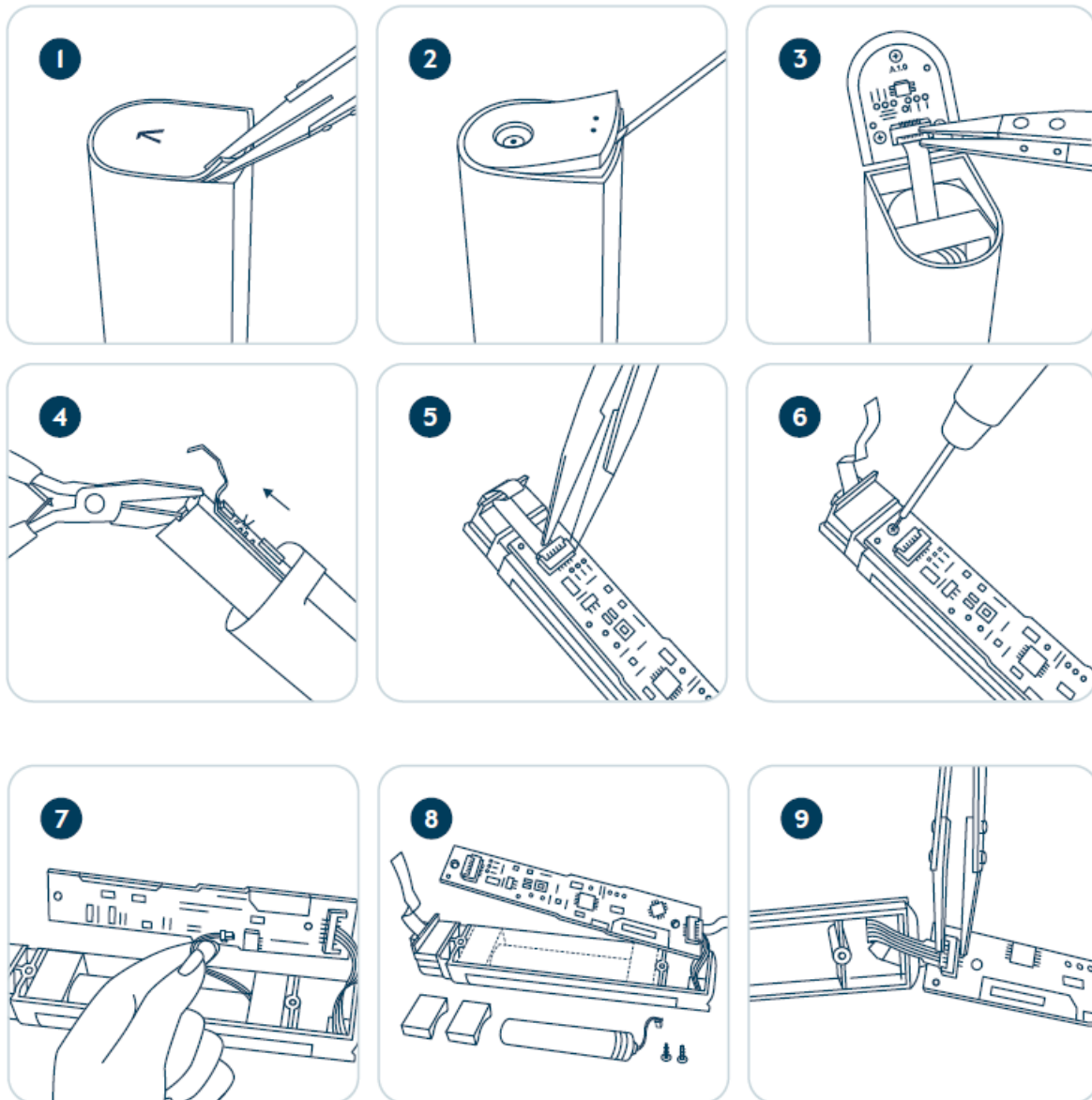
## Removing the rechargeable battery

DO NOT remove the battery until you intend to discard the product. Make sure that the battery is empty of charge before removing it. DO NOT use a sharp object when removing the battery. DO NOT puncture the battery. Please exercise basic safety precautions when following the instructions below. Make sure the battery is completely empty when you remove it. Observe safety precautions when following the procedure below.

1. Take a pair of tweezers and pry off the silicone button pad.
2. Remove the plastic button cover.
3. Remove the button board connection.
4. Pull out the inner bracket, removing the entire inner component from the outer casing.
5. Remove the LED board connection.
6. Unscrew the two screws of the control board.
7. Turn over the control board and pull out the battery connector (red, white & black wires).



8. Remove the holding pads and remove the battery.
9. Remove the sensor connection to complete battery removal.



## Warnings & cautions

Improper operation of the LARQ Pitcher PureVis™ may cause injury. Please read and understand all warnings & cautions prior to operating this product. Do not use the LARQ Pitcher PureVis™ in any manner other than instructed in the User Manual.

Caution: Ultraviolet radiation. Do not look at light directly. Direct UV light can irritate eyes and skin. Do not operate the PureVis™ Wand outside the LARQ Pitcher PureVis™.

- To cancel a purifying cycle, first press the  $\Lambda$  Lambda button on top of the PureVis™ Wand, then safely remove the PureVis™ Wand from the LARQ Pitcher PureVis™.
- Do not use as a light source.
- Only use the LARQ Pitcher PureVis™ with potable water.
- Do not operate the PureVis™ Wand in containers such as laboratory beakers.
- The PureVis™ Wand's UV-C light is not intended to disinfect water in the upper chamber or exterior surfaces of the pitcher where the light does not reach.
- This product is not intended for use by children.

- As with any water treatment system, you should always have a backup method available.
- The UV-C light is an electrical device. Removal or tampering with the electronic circuit board of UV-C light assembly may cause injury or damage to the product, and will void all warranties.

## Warnings & cautions

- Do not open, expose, modify or touch internal circuitry as this can lead to electric shock. Changes or modifications to this device not expressly approved by LARQ may void the user's authority to operate this equipment. This warranty does not cover damages caused by alteration of parts, removal of parts, tampering, disassembling, or any installation of parts not manufactured or sold by LARQ.
- Do not allow impact to the UV-C light. If the PureVis™ Wand or UV-C light lens is cracked, chipped or damaged, do not operate. Contact LARQ customer service or visit [livelarq.com](https://livelarq.com) for more information regarding proper disposal, or to return.
- While carefully controlled microbiological testing has been conducted, the use of the PureVis™ Wand's UV-C light in the field may produce results that vary from laboratory test data.

## LARQ™. All rights reserved.

Designed in California. Manufactured in China.

Industrial Design by Impel Studios.

## Covered by one or more of the following patents:

**US:** 8816300, 10214431, 10227241, 10561156, 10570028, 10669166, 10906819, 10959443, 10969262, 11112763, D885836, D917231.

**EU:** 008248926-0001, 008274948-0001.

**China:** 2016206839626, 201620673788, 2016206791839, 2017208777830, 2018300763454, ZL2020306651021, ZL2020307033854.

Other US and foreign patents pending.

[livelarq.com](https://livelarq.com)

## Documents / Resources



[LARQ Pitcher PureVis Unique Two Stage Process](#) [pdf] User Guide

Ver-4\_240517, Pitcher PureVis Unique Two Stage Process, Pitcher PureVis, Pitcher PureVis Two Stage Process, Unique Two Stage Process, Two Stage Process, Unique Process, Process

## References

- [User Manual](#)

[Manuals+](#), [Privacy Policy](#)

This website is an independent publication and is neither affiliated with nor endorsed by any of the trademark owners. The "Bluetooth®" word mark and logos are registered trademarks owned by Bluetooth SIG, Inc. The "Wi-Fi®" word mark and logos are registered trademarks owned by the Wi-Fi Alliance. Any use of these marks on this website does not imply any affiliation with or endorsement.