

LAPP H-EE 46 SC H-EE Inserts Instructions

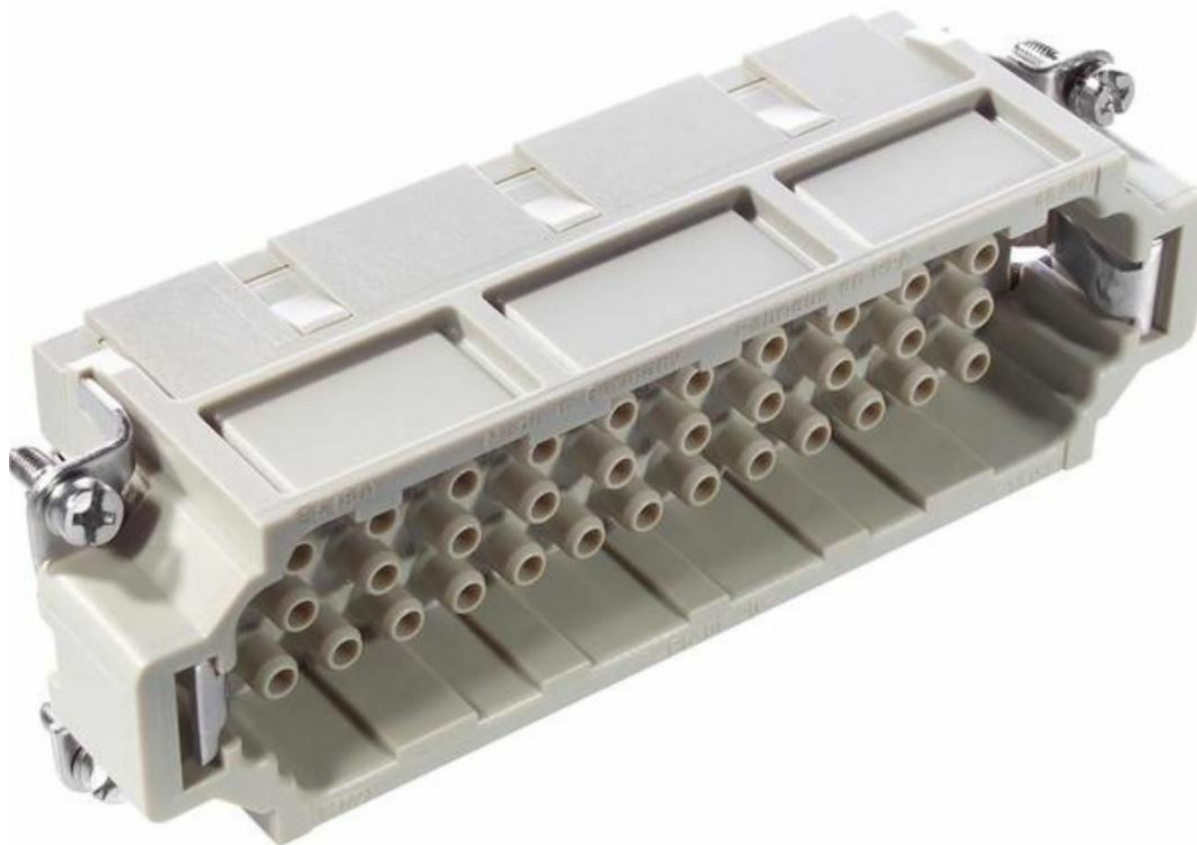
[Home](#) » [LAPP](#) » LAPP H-EE 46 SC H-EE Inserts Instructions 

Contents

- [1 LAPP H-EE 46 SC H-EE Inserts](#)
- [2 Product Information](#)
- [3 Product Usage Instructions](#)
- [4 FAQ](#)
- [5 Info](#)
- [6 Benefits](#)
- [7 Application range](#)
- [8 Technical Data](#)
- [9 Product Overview](#)
- [10 Documents / Resources](#)
 - [10.1 References](#)



LAPP H-EE 46 SC H-EE Inserts



Product Information

Specifications

- Classification ETIM 5: EC000438 – Contact insert for industrial connectors
- Classification ETIM 6: EC000438 – Contact insert for industrial connectors
- Rated voltage (V): 500
- Rated impulse voltage: 6 kV
- Rated current (A): 5
- Pollution degree: 5
- Contact resistance: 5
- Contacts: machined male/female
- Number of contacts: 1 – 46
- Termination methods: crimp termination
- Cycle of mechanical operation: 1 – 46 pieces / PU
- VDE-tested
- Temperature range: not specified

Product Usage Instructions

Application Range

The H-EE inserts with machined contacts are suitable for use in the following applications:

- Mechanical engineering
- Plant engineering

- Appliance and apparatus construction

Installation

To install the H-EE insert, follow these steps:

1. Select an appropriate H-B housing for the installation.
2. Ensure that the contacts are properly aligned with the corresponding slots in the housing.
3. Gently push the insert into the housing until it is securely in place.

Maintenance

To ensure proper functioning and longevity of the H-EE insert, perform regular maintenance:

- Inspect the contacts for any signs of damage or wear.
- Clean the contacts using a soft, lint-free cloth and a suitable contact cleaner if necessary.
- Ensure that the contacts are properly aligned and making good contact with the mating connectors.
- Replace any damaged or worn contacts as needed.

FAQ

Q: What is the temperature range for the H-EE inserts?

A: The temperature range is not specified in the provided information. Please refer to the corresponding data sheet for the current technical data.

Q: Can I use the H-EE inserts with other housing types?

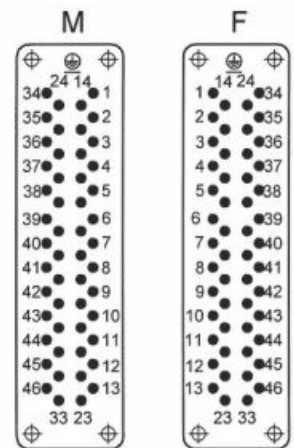
A: No, the H-EE inserts are specifically designed for installation in H-B housing.



EPIC® H-EE 46

H-EE inserts with high contact density based on the proven H-BE series. The H-EE insert with machined contacts is suitable for a high number of poles on a small area and for installation in H-B housing.

Info

- Inserts with high contact density for medium power
- Also as EPIC® H-EE 92 is available



-  Mechanical and plant engineering
-  Temperature-resistant

Benefits

The H-EE inserts with machined contacts for a high number of pins in very tight spaces. For assembly in H-B housing

Application range

- Mechanical engineering
- Plant engineering
- Appliance and apparatus construction

Technical Data

- Classification ETIM 5:
 - ETIM 5.0 Class-ID: EC000438
 - ETIM 5.0 Class-Description: Contact insert for industrial connectors
- Classification ETIM 6:
 - ETIM 6.0 Class-ID: EC000438
 - ETIM 6.0 Class-Description: Contact insert for industrial connectors
- Rated voltage (V):
 - IEC: 500 VUL: 600 VCSA: 600 V
- Rated impulse voltage:
 - 6 kV

- Rated current (A): IEC: 16 A
- UL: 16 A
- CSA: 16 A
- Pollution degree: 3
- Contact resistance: < 2 mOhm
- Contacts: Copper alloy, hard silver/gold-plated
- Number of contacts: 46 + PE
- Termination methods: Crimp termination: 0.5 – 4.0 mm²
- Cycle of mechanical operation: 100
- VDE-tested: UL-tested:
- UL File Number: E75770
- Temperature range: -40°C to +100°C, short-term up to +125°C

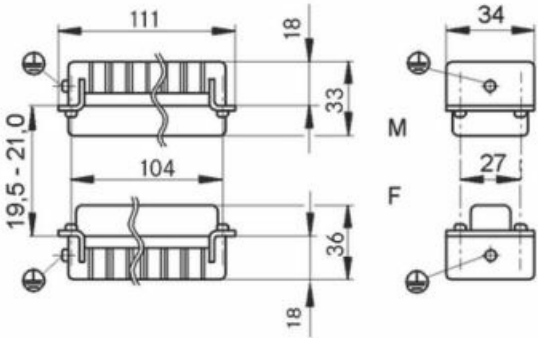
Note

Photographs and graphics are not to scale and do not represent detailed images of the respective products. Prices are net prices without VAT and surcharges. Sale to business customers only.

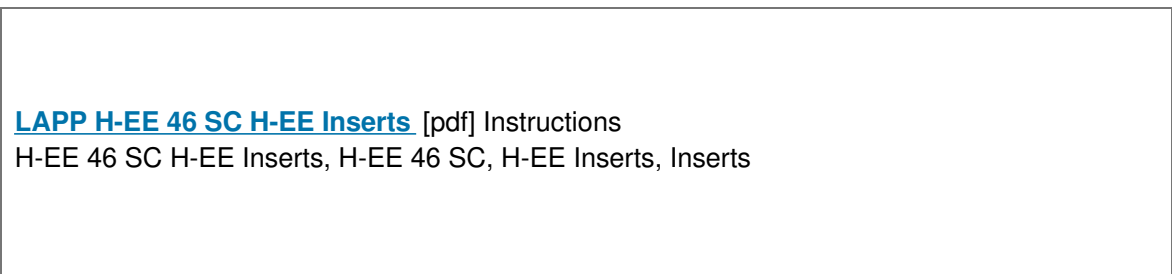
- Downloaded from [Arrow.com](https://www.arrow.com).

Article number	Article description	Contact type	Article designation	Number of operating contacts	Pieces / PU
H-EE 46 crimp termination					
10186400	H-EE 46 SC	male	machined	1 - 46	5
10187400	H-EE 46 BC	female	machined	1 - 46	5

Product Overview



Documents / Resources



References

-  [Lapp](#)
-  [TCPDF](#)
- [User Manual](#)

Manuals+, Privacy Policy

This website is an independent publication and is neither affiliated with nor endorsed by any of the trademark owners. The "Bluetooth®" word mark and logos are registered trademarks owned by Bluetooth SIG, Inc. The "Wi-Fi®" word mark and logos are registered trademarks owned by the Wi-Fi Alliance. Any use of these marks on this website does not imply any affiliation with or endorsement.