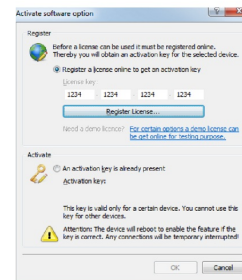


LANCOM SYSTEMS Options Activation



LANCOM Options Activation User Guide

[Home](#) » [LANCOM](#) » LANCOM Options Activation User Guide 

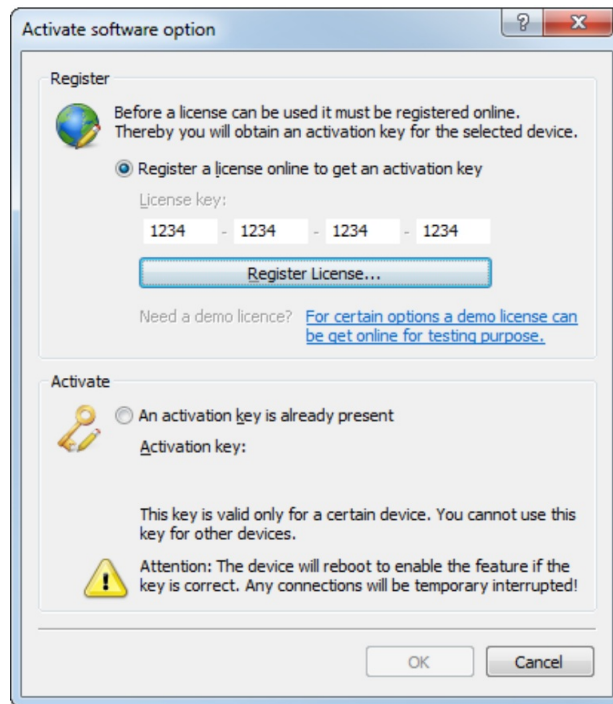
Contents

- 1 LANCOM Options Activation
- 2 Product Usage Instructions
- 3 FAQ
- 4 Introduction
- 5 Installation requirements
- 6 LANCOM Option Activation
- 7 Activating the LANCOM software option
- 8 Activation via a web browser
- 9 Activate software option
- 10 Help in case of problems
- 11 Documents / Resources
 - 11.1 References

LANCOM

SYSTEMS

LANCOM Options Activation



Specifications

- **Manufacturer:** LANCOM Systems GmbH
- **Product:** LANCOM Option Activation
- **System Requirements:** LANCOM device compatibility, up-to-date LCOS version
- **Package Contents:** Proof of license, manual (if applicable)
- **Configuration Computer:** Windows 7 or later

Product Usage Instructions

Installation Requirements

Before activating LANCOM software options, ensure that your LANCOM device meets the following requirements.

- Check device compatibility on the LANCOM Systems website.
- Verify LCOS version compatibility.
- Check package contents for license proof and manual.
- Use LANtools for installation on a Windows 7 or later computer.

Activation Methods

You can activate LANCOM software options in two ways.

1. Enter registration data in LANconfig.
2. Request an activation code online and activate via a web browser.

Alternative Activation

If you prefer, you can activate software options using a browser and WEBconfig from any operating system with

access to the LANCOM device.

Updating Tools and Firmware

Before proceeding with installation, ensure you have the latest versions of LANconfig, LANmonitor, and firmware.

- Download the latest LANtools from the LANCOM Systems homepage.
- Get firmware updates from the LANCOM website for your specific device.

Registration Information

Keep the following details ready for online registration.

- Software option name.
- License number from proof of license.
- LANCOM device serial number.
- Customer data: company, name, address, email.

FAQ

How can I check if my LANCOM device supports a specific software option?

You can verify device compatibility by visiting the LANCOM Systems website and checking the respective product webpage for information.

What should I do if I encounter issues during activation?

If you face any problems during activation, you can contact LANCOM Systems support for assistance. Ensure you have all the necessary registration information at hand.

Introduction

Thank you for purchasing a LANCOM software option. The LANCOM software options allow you to add new features to your devices with a minimum of effort.

Activating LANCOM software options

LANCOM software options are activated in three steps:

- Checking the prerequisites for installation
- Activating the LANCOM software option
- Checking the activation

Installation requirements

System requirements

- Please ensure that you have met all of the requirements to successfully operate the software options:
- Your LANCOM device must support the use of this software option.
- For information on whether your device supports the desired software option, refer to the LANCOM Systems website at www.lancom-systems.com/products/software-accessories/software-options/ on the respective product webpage.
- The version of LCOS (firmware) that you operate must support the software option. Some functions are not available in older versions. LANCOM Systems recommends that you use an up-to-date version of LCOS.

Package content

- Please ensure that the software option package includes the following components.
- Proof of license with a printed license number
- Manual (not applicable for all software options)

Configuration computer

- If you wish to install the software option with the help of the LANtools, you require a computer with the operating system Windows 7 or later.

LANCOM Option Activation

- Alternatively, activation is also possible with any operating system by means of a browser and WEBconfig. The computer must have access to the LANCOM device that is to be configured. Access may be via the local network or even via remote access.

Current LANconfig

- The latest version of LANconfig and LANmonitor (the LANtools) are available for download from the LANCOM Systems homepage under www.lancom-systems.com/downloads/.
- We recommend that you update these programs before continuing with the installation.

Current firmware in the LANCOM device

- The latest firmware updates are available for download from the LANCOM website under www.lancom-systems.com/downloads/. Select your device from the list and download the firmware onto your computer.
- Detailed information about updating the firmware is available in the documentation for your LANCOM device.

Necessary registration information

- Please have the following information at the ready for your online registration.
- Precise designation of the software option
- The license number (from the proof of license)
- Serial number of your LANCOM device (to be found on its underside)
- Your customer data (company, name, postal address, e-mail address)

- Registration is anonymous and can be completed without specifying personal data. Any additional information may be of help to us in case of service and support. All information is of course treated in the strictest confidence.

Activating the LANCOM software option

- There are two ways to activate the LANCOM software option. Either you enter the required registration data in LANconfig, or you request an activation code online with your registration data and activate your software option through a web browser.

Activation via LANconfig

1. In LAN config, mark the appropriate LANCOM device (simply click on the entry with your mouse) and select the menu item Device > Activate software option.

Activate software option

Register

 Before a license can be used it must be registered online. Thereby you will obtain an activation key for the selected device.

☒ Register a license online to get an activation key

License key:

1234 - 1234 - 1234 - 1234

Register License...

Need a demo licence? [For certain options a demo license can be get online for testing purpose.](#)

Activate

 ☐ An activation key is already present

Activation key:

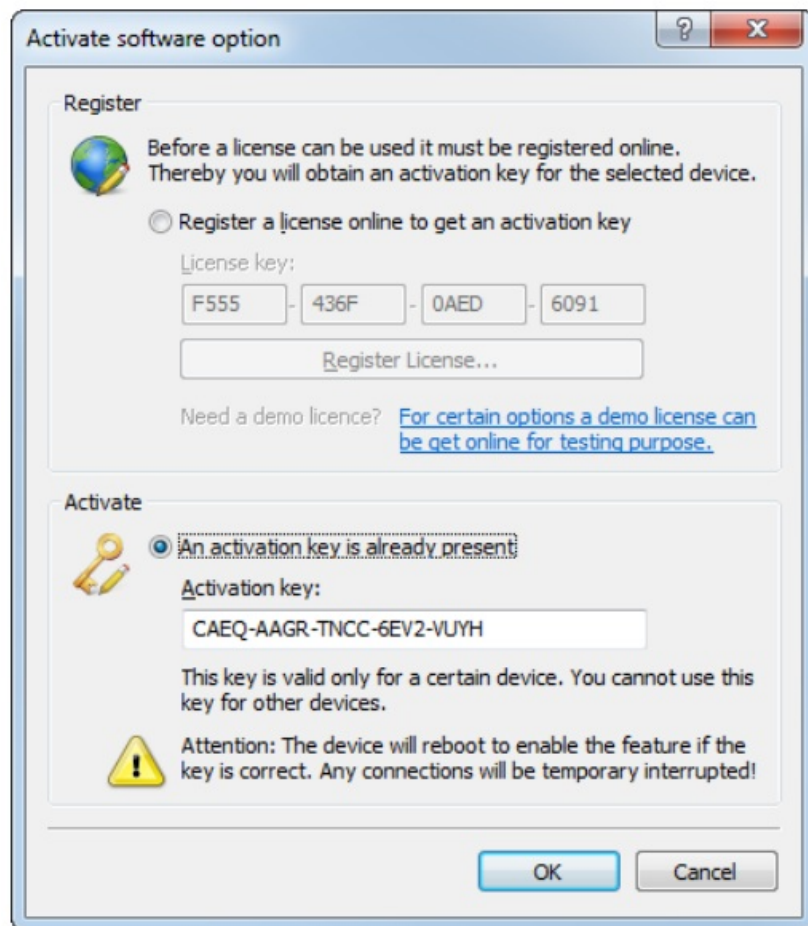
This key is valid only for a certain device. You cannot use this key for other devices.

 **Attention:** The device will reboot to enable the feature if the key is correct. Any connections will be temporary interrupted!

OK **Cancel**

2. Enter your license key and then click Register license.
 - After successful online registration, the license number of your software option is invalidated for any other device. The activation code that is sent to you can only be used with the LANCOM device as identified by the serial number that you provided at registration. Please ensure that you only want to install the software option on the corresponding device. It is not possible to change to another device at a later date!
3. The LANCOM website opens and your device is displayed along with its serial number. The software option corresponding to the license number you entered will be displayed and a click on Next takes you to the page where you enter your registration data.
4. Enter the required information and follow the further instructions. If you submit an e-mail address you will receive confirmation of registration and your activation key via e-mail.

Make sure you store your activation key safely! You may need it to activate your software option again at a later date, for example after a repair.
5. Select the activation key that is displayed on the website or contained in the e-mail, and copy it to the clipboard.
6. Switch to LANconfig. The activation key is automatically inserted from the clipboard.



7. Click on OK. The software option is activated now.
8. The device will then restart automatically.

Activation via a web browser

- The software option comes with a proof of license document that has a license number printed on it. This license number gives you one opportunity to register with LANCOM Systems and to receive an activation code.
- This activation code is then used to activate the option on your LANCOM device.
- After successful online registration, the license number of your software option becomes invalid. The activation code that is sent to you can only be used with the LANCOM device as identified by the serial number that you

provided at registration.

- Please ensure that you only want to install the software option on the corresponding device. It is not possible to change to another device at a later date!

Entering the registration data

1. Start a web browser and access the LANCOM Systems website under www.lancom-systems.com/routeroptions/.
2. Enter the required information and follow the further instructions. If you submit an e-mail address you will receive confirmation of registration via e-mail. This completes the online registration.
 - Make sure you store your activation code safely! You may need it to activate your software option again at a later date, for example after a repair.

Activate software option

1. Using WEBconfig, log in to the appropriate LANCOM device.
2. Open Extras > Activate software option.
3. Enter the activation key that you received with your online registration.
4. Click on Send.
5. The device will then restart automatically.

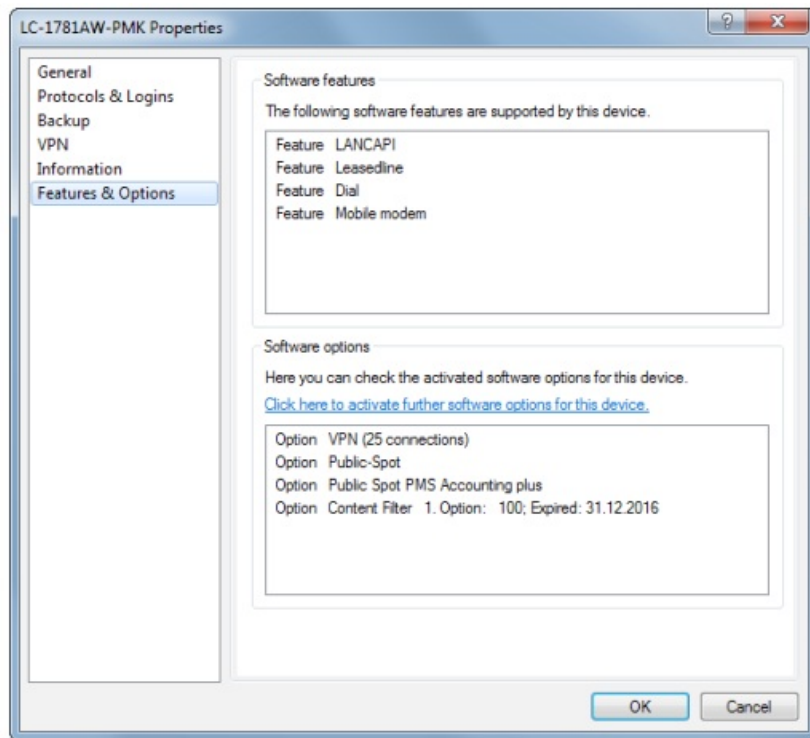
Help in case of problems

If you have problems with registering your LANCOM software option, please contact us by e-mail at optionsupport@lancom.de.

Checking the activation

You can check if the online activation of your software option was successful by selecting the device in LANconfig and clicking on the menu item Device Properties.

The properties windows contain a tab named Features & options that lists the activated software options.




Copyright

- © 2024 LANCOM Systems GmbH, Wuerstelen (Germany). All rights reserved. While the information in this manual has been compiled with great care, it may not be deemed an assurance of product characteristics. LANCOM Systems shall be liable only to the degree specified in the terms of sale and delivery. The reproduction and distribution of the documentation and software supplied with this product and the use of its contents are subject to written authorization from LANCOM Systems.
- We reserve the right to make any alterations that arise as a result of technical development.
- Windows® and Microsoft® are registered trademarks of Microsoft, Corp. LANCOM, LANCOM Systems, LCOS, LANcommunity and Hyper Integration registered trademarks. All other names or descriptions used may be trademarks or registered trademarks of their owners. This document contains statements relating to future products and their attributes. LANCOM Systems reserves the right to change these without notice. No liability for technical errors and/or omissions.
- Products from LANCOM Systems include software developed by the OpenSSL Project™ for use in the "OpenSSL Toolkit" (www.openssl.org). Products from LANCOM Systems include cryptographic software written by Eric Young (ey@cryptsoft.com).
- Products from LANCOM Systems include software developed by the NetBSD Foundation, Inc. and its contributors.
- Products from LANCOM Systems contain the LZMA SDK developed by Igor Pavlov.
- The product contains separate components which, as so-called open source software, are subject to their licenses, in particular the General Public License (GPL).
- If required by the respective license, source files for the affected software components are made available on request. To do this, please send an e-mail to gpl@lancom.de.
- **LANCOM Systems GmbH**
- **A Rohde & Schwarz Company**
- **Adenauerstr. 20/B2**
- **52146 Wuerstelen, Germany**

- www.lancom-systems.com
- Wuerselen, 02/2024
- LANCOM Systems GmbH
- A Rohde & Schwarz Company
- Adenauerstr. 20/B2
- 52146 Würselen Germany
- info@lancom.de
- www.lancom-systems.com
- LANCOM, LANCOM Systems, LCOS, LANcommunity, and Hyper Integration are registered trademarks. All other names or descriptions used may be trademarks or registered trademarks of their owners.
- This document contains statements relating to future products and their attributes. LANCOM Systems reserves the right to change these without notice. No liability for technical errors and/or omissions. 02/2024

Documents / Resources

 <p>LANCOM Options-Aktivierung Handbuch</p> <p>LANCOM</p>	<p>LANCOM Options Activation [pdf] User Guide Options Activation, Activation</p>
---	--

References

- [L Business network solutions "engineered in Germany": LANCOM Systems GmbH](#)
- [OS openssl.org](https://os.openssl.org)
- [User Manual](#)

Manuals, Privacy Policy

This website is an independent publication and is neither affiliated with nor endorsed by any of the trademark owners. The "Bluetooth®" word mark and logos are registered trademarks owned by Bluetooth SIG, Inc. The "Wi-Fi®" word mark and logos are registered trademarks owned by the Wi-Fi Alliance. Any use of these marks on this website does not imply any affiliation with or endorsement.