



LANCOM Content Filter Installation Guide

[Home](#) » [LANCOM](#) » LANCOM Content Filter Installation Guide 

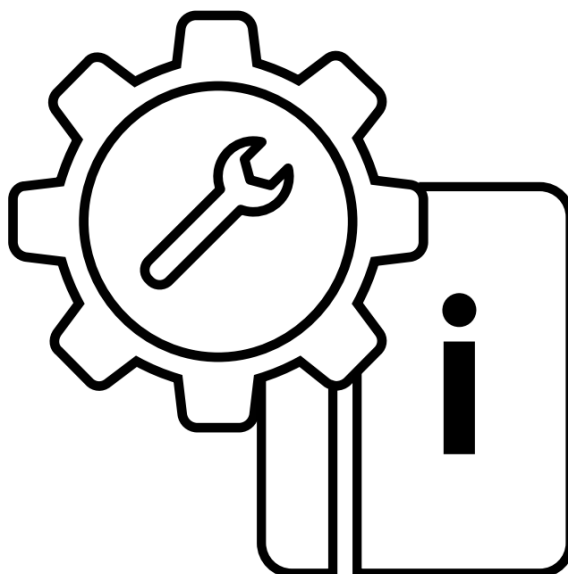
LANCOM

Content Filter
Installation Guide

Contents

- [1 Content Filter](#)
- [2 Introduction](#)
- [3 Safety advice](#)
- [4 Installation requirements](#)
- [5 Documents / Resources](#)
 - [5.1 References](#)
- [6 Related Posts](#)

Content Filter



Copyright

© 2022 LANCOM Systems GmbH, Wuerselen (Germany). All rights reserved.

While the information in this manual has been compiled with great care, it may not be deemed an assurance of product characteristics. LANCOM Systems shall be liable only to the degree specified in the terms of sale and delivery. The reproduction and distribution of the documentation and software supplied with this product and the use of its contents is subject to written authorization from LANCOM Systems. We reserve the right to make any alterations that arise as the result of technical development.

Windows® and Microsoft® are registered trademarks of Microsoft, Corp. LANCOM, LANCOM Systems, LCOS, LANcommunity and Hyper Integration are registered trademarks. All other names or descriptions used may be trademarks or registered trademarks of their owners. This document contains statements relating to future products and their attributes.

LANCOM Systems reserves the right to change these without notice. No liability for technical errors and / or omissions.

Products from LANCOM Systems include software developed by the “OpenSSL Project” for use in the “OpenSSL Toolkit” (www.openssl.org).

Products from LANCOM Systems include cryptographic software written by Eric Young (ey@cryptsoft.com).

Products from LANCOM Systems include software developed by the NetBSD Foundation, Inc. and its contributors.

Products from LANCOM Systems contain the LZMA SDK developed by Igor Pavlov.

The product contains separate components which, as so-called open source software, are subject to their own licenses, in particular the General Public License (GPL). If required by the respective license, source files for the affected software components are made available on request. To do this, please send an e-mail to gpl@lancom.de.

Introduction

The LANCOM Content Filter enables you to filter certain content from your network, so preventing access to Internet pages with content that is illegal or offensive. It also enables you to stop private surfing on specific sites during working hours. This not only increases staff productivity and network security but also ensures that the full bandwidth is available exclusively for your business activities.

ⓘ The use of the LANCOM Content Filter may in certain countries be subject to certain restrictions by data-privacy laws or directives, and/or to company guidelines. Before activating the LANCOM Content Filter, please be sure to check the relevant laws, directives or agreements.

As of LCOS 10.70, the BPjM module is a component of the Content Filter. The BPjM module is published by the German Federal Agency for the Protection of Children and Young People in the Media and blocks domains that may not be made accessible to children and young people in Germany.

Safety advice

To maximize the security available from your product, we recommend that you undertake all of the security

settings (e.g. firewall, encryption, access protection) that were not already activated when you purchased the product.

The LANconfig Wizard 'Security Settings' will help you with this task.

We would additionally like to ask you to refer to our Internet site www.lancom-systems.com for the latest information about your product and technical developments, and also to download our latest software versions.

Information symbols



Important instruction that should be observed



Additional information that may be helpful but is not essential

Activating the LANCOM Content Filter

This chapter informs you how to activate the LANCOM Content Filter on your LANCOM device. Activation takes place in four steps:

1. Ensuring that the prerequisites for installation are fulfilled
2. Online enrollment
3. Entry of the activating code
4. Checking the activation

Installation requirements



The use of the LANCOM Content Filter may in certain countries be subject to certain restrictions by data-privacy laws or directives, and/or to company guidelines. Before activating the LANCOM Content Filter, please be sure to check the relevant laws, directives or agreements.

System requirements

Please ensure that you have met all of the requirements to successfully operate the LANCOM Content Filter:

- LANCOM device with the option to activate the LANCOM Content Filter.
- Proof of license for the LANCOM Content Filter.

Package content

Please ensure that the option package includes the following components:

- Proof of license with a printed license number
- Manual

Configuration PC with Windows operating system

To install the LANCOM Content Filter with LANconfig, you require a computer with the Windows operating system. Alternatively, activation can be performed via WEBconfig.

The computer must have access to the LANCOM device that is to be configured. Access may be via the LAN or via remote access.

Up-to-date LANconfig

The latest version of LANconfig and LANmonitor are available for download from the LANCOM Systems homepage under www.lancom-systems.com/download/. We recommend that you update these programs before continuing to the installation.

Up-to-date firmware in the LANCOM device

The latest firmware updates are available for download from the LANCOM Systems website under www.lancom-systems.com/download/. Select your device from the list and download the firmware onto your computer.



Detailed information about updating the firmware is available in the documentation for your LANCOM device.

Online enrollment

To activate the LANCOM Content Filter in the LANCOM device, you need an activation code.



Please note: The activation code is not included in the package. It will be sent to you on online registration. The LANCOM Content Filter is supplied with a proof of license. This has a license number printed on it. This license number gives you one opportunity to register with LANCOM Systems and to receive an activation code.



After successful online registration, the license number of your LANCOM Content Filter becomes invalid. The activation code that is sent to you can only be used with the LANCOM device as identified by the serial number which you provided at registration. Please ensure that you really only want to install the LANCOM Content Filter on the corresponding device. It is not possible to change to another device at a later date.

Necessary registration information

Please have the following information at the ready for your online registration:

- Precise designation of the software option
- The license number (from the proof of license)
- Serial number of your LANCOM device (to be found on the underside of the device)
- Your customer data (company, name, postal address, e-mail address).

! Registration is anonymous and can be completed without specifying personal data. Any additional information may be of help to us in case of service and support. All information is of course treated in the strictest confidence.

Online entry of registration information

1. Start a web browser and access the LANCOM Systems website under www.lancom-systems.com/router-options/.
2. Enter the required information and follow the further instructions. After entering all of the data, you will be sent the activation code for your device and your customer data. If you submit an e-mail address you will receive the data including the activation code via e-mail. Online registration is now complete.

! Make sure you store your activation code safely! You may need it at a later date to activate your LANCOM Content Filter again, for example after a repair.

Help in case of problems

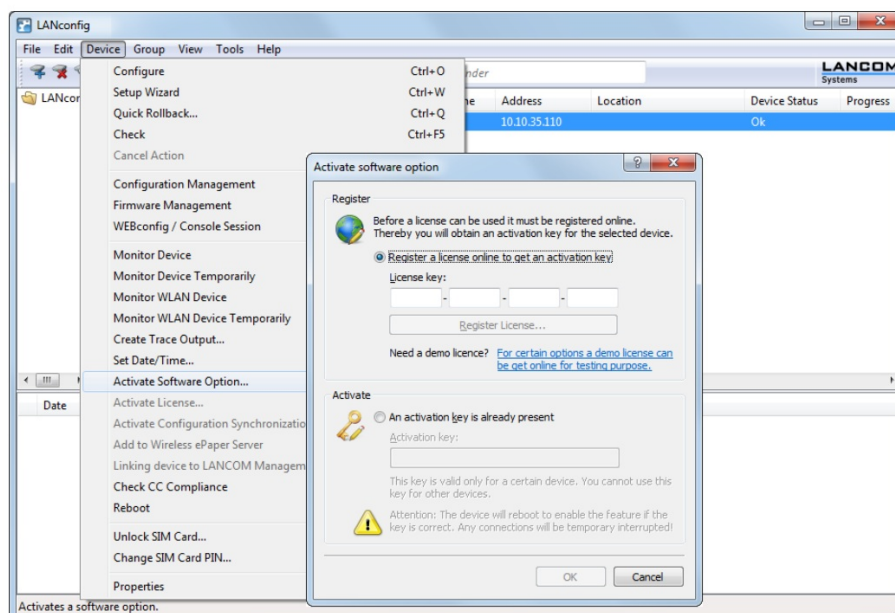
If you have problems with registering your software option, please contact us by e-mail at optionsupport@lancom.de.

Entry of the activating code

→ In LANconfig, mark the appropriate device (simply click on the entry with your mouse) and select the menu item Device > Activate Software Option.

→ Under WEBconfig select the menu command Extras > Activate Software Option.

In the following window, enter the activation code that you received with your online registration. The device will then restart automatically.



→ When using the command line interface (e.g. SSH), enter the command feature followed by the activation key: feature <activation key>

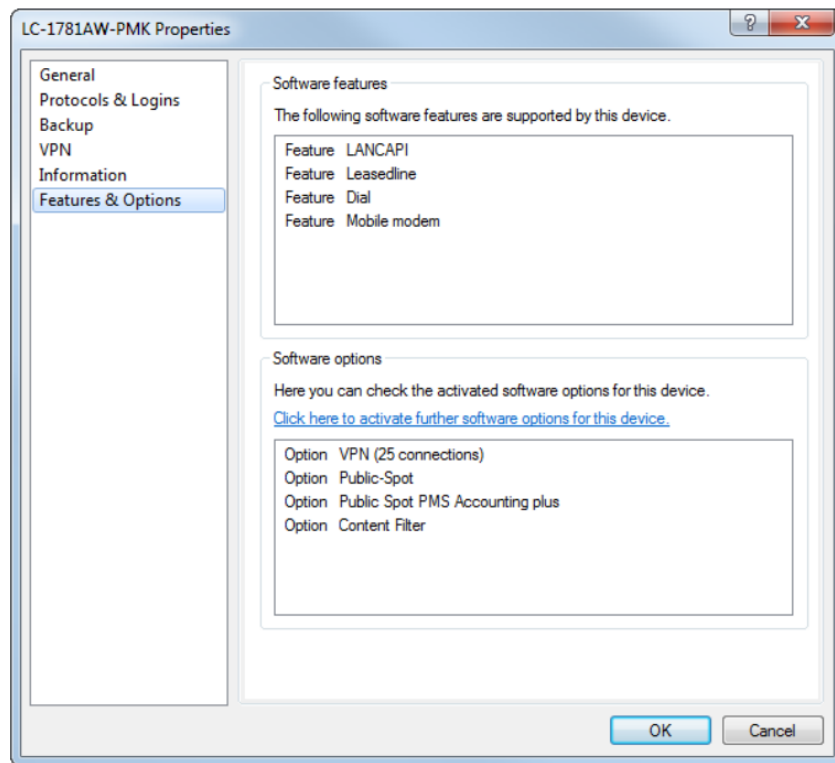
! Please be aware that activating the LANCOM Content Filter is valid only for a certain time period. You can have yourself sent an e-mail before the license expires.

LANconfig: Configuration > Log & Trace > General > License expiry

WEBconfig: LCOS menu tree > Setup > Config > License expiry e-mail

Checking the activation

You can check if the online activation of the LANCOM Content Filter was successful by selecting the device in LANconfig and selecting the menu item Device > Properties > Features & Options.



If activation was successful, you can continue by configuring the LANCOM Content Filter.

Configuring the LANCOM Content Filter

How it works

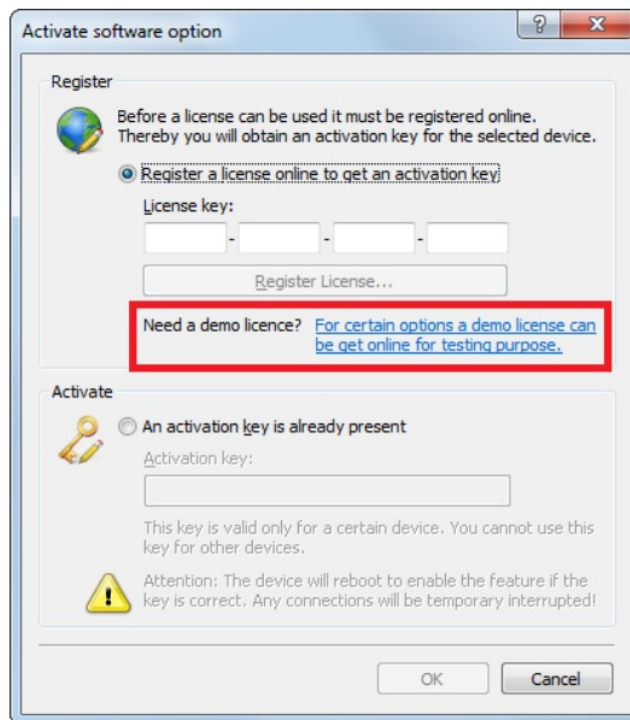
The LANCOM Content Filter is an intelligent website filter that works dynamically. It contacts a rating server that evaluates Internet sites reliably and accurately in accordance with the categories that you select. The LANCOM Content Filter operates by checking the IP addresses behind the URLs that are entered. For any given domain it is possible to differentiate according to the path, meaning that specific areas of a URL may be rated differently.

ⓘ It is not possible for users to avoid the LANCOM Content Filter website rating simply by entering the website's IP address into their browsers.

The LANCOM Content Filter license you purchase is valid for a certain number of users and for a specific period (for one or three years). You will be informed of the expiry of your license in advance. The number of current users is monitored in the device, with the users being identified by their IP address. You can configure what should happen when the number of licensed users is exceeded: Access can either be denied or an unchecked connection can be made.

ⓘ The included BPjM module is not user-limited, regardless of the number of licensed Content Filter users.

ⓘ You can test the LANCOM Content Filter on any router that supports this function. All you have to do is to activate a 30-day demo license for each device. Demo licenses are generated directly with LANconfig. Click on the device with the right-hand mouse key and select the context menu entry 'Activate software option'. In the dialog that follows, click on the link to the demo license. You will automatically be connected to the website for the LANCOM registration server. Simply select the required demo license and you can register your device.



All settings relating to categories are stored in category profiles. You select from predefined main and sub-categories in the LANCOM Content Filter: 75 categories are divided into 16 subject groups such as “Pornography, Nudity”, “Shopping” or “Illegal Activities”. You can activate or deactivate each of the categories that these groups contain. Sub-categories for “Pornography/ Nudity” are, for example, “Pornography/Erotic/Sex” and “Swimwear/Lingerie”. When configuring these categories, administrators have an additional option of activating an override. When the override option is active, users may still access the forbidden site for a particular period of time by clicking on a corresponding button, but the administrator will be notified of this by e-mail, Syslog, or SNMP trap.

The category profile, whitelist and blacklist can be used to create a Content Filter profile that you can assign to particular users by means of the firewall. For example you can create a profile called “Employees_department_A” and assign this to all of the computers in that department.

When you install the LANCOM Content Filter, basic default settings are created automatically. These only need to be activated for the initial start. You can subsequently customize the behavior of the LANCOM Content Filter to match your own requirements. Sensible default settings are also set up automatically for the BPjM module.

Thus, a default firewall rule exists in the IPv4 or IPv6 firewall with the system object “BPjM” as the target station. Define as source stations the networks that are to be protected by the BPjM module. Activating the rule starts the BPjM module.

Requirements for operation

The following requirements must be met before you can use the LANCOM Content Filter:

1. The firewall must be activated and an appropriate firewall rule must select the Content Filter profile.
2. The Content Filter profile must specify a category profile and if desired a whitelist and/or blacklist for each part of the day. A Content Filter profile can consist of several different entries to provide different levels of protection during different parts of the day.

If a certain time span during the day is not covered by an entry, then access to the Internet goes unchecked during this period.

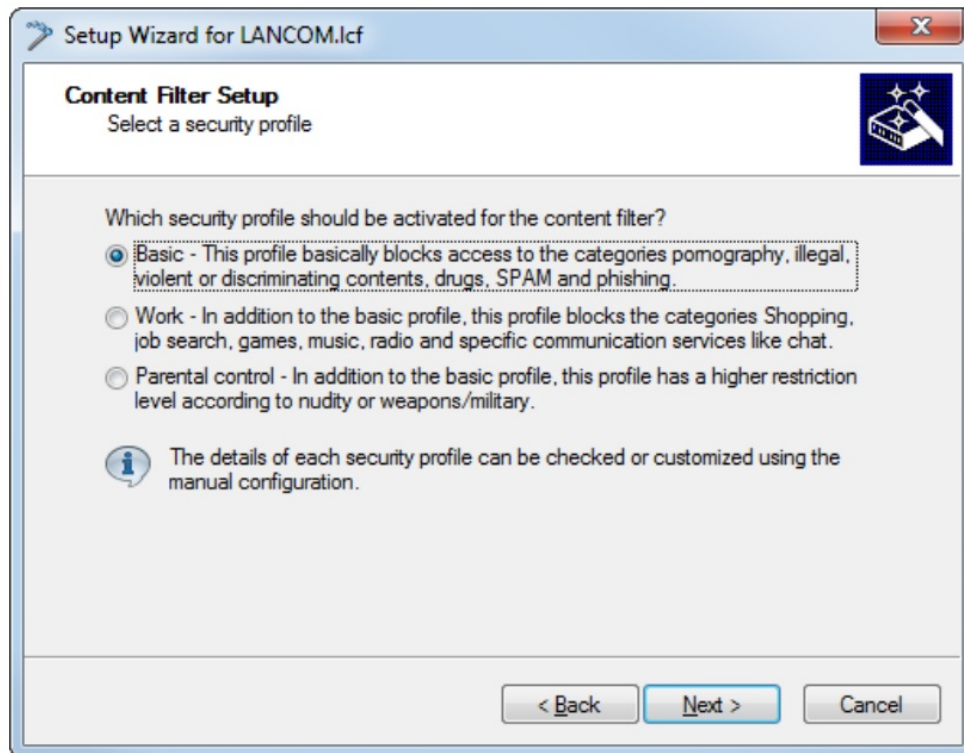
ⓘ If the Content Filter profile is subsequently renamed, the firewall must also be modified.

Quick start

After installing the LANCOM Content Filter, all the settings have been made to get it up and running quickly.

ⓘ The operation of the LANCOM Content Filter may be restricted by your country’s data protection regulations or by company guidelines. Please check any regulations that may apply before putting the system into operation. You activate the LANCOM Content Filter by:

1. Start the Setup Wizard for the device.
2. Select the Setup Wizard for configuring the Content Filter.



3. Select one of the pre-defined security profiles (basic, work, parental control):
 - Basic profile: This profile mainly blocks access to the categories pornography, illegal, violent or discriminatory content, drugs, SPAM, and phishing.
 - Work profile: In addition to the settings for the basic profile, this profile also blocks the categories shopping, job search, gaming, music, radio, and certain communications services such as chat.
 - Parental control profile: In addition to the settings for the basic profile, this profile also blocks nudity and weapons/military.

Should the firewall be deactivated, the Wizard will switch the firewall on. The Wizard then checks if the firewall rule is set correctly for the Content Filter and, if necessary, will take corrective measures. After activating the Content Filter with the steps outlined above, all stations in the network are being filtered according to the settings of the selected Content Filter profile and the as-yet empty blacklist and whitelist. You can adapt these settings for your purposes, if necessary.

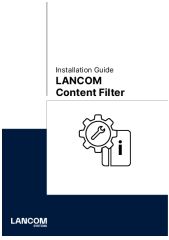
! Detailed information about manually configuring the content filter is available in the LCOS reference manual available as a PDF download from www.lancom-systems.com.

LANCOM



LANCOM Systems GmbH
Adenauerstr. 20/B2
52146 Würselen | Germany
info@lancom.de
www.lancom-systems.com

LANCOM, LANCOM Systems, LCOS, LANcommunity and Hyper Integration are registered trademarks. All other names or descriptions used may be trademarks or registered trademarks of their owners. This document contains statements relating to future products and their attributes. LANCOM Systems reserves the right to change these without notice. No liability for technical errors and / or omissions. 08/2022

Documents / Resources

 The image shows the cover of the 'LANCOM Content Filter' installation guide. It features a white background with a blue L-shaped graphic on the left. The text 'Installation Guide' is at the top, followed by 'LANCOM' in a bold font and 'Content Filter' below it. A small icon of a gear and a document with an 'i' is also present. The LANCOM logo is at the bottom left.	<p>LANCOM Content Filter [pdf] Installation Guide Content Filter, Content, Filter</p>
---	---

References

-  [Business network solutions "made in Germany": LANCOM Systems GmbH](#)
-  [Business network solutions "made in Germany": LANCOM Systems GmbH](#)
-  [Business network solutions "made in Germany": LANCOM Systems GmbH](#)
-  [Router options: LANCOM Systems GmbH](#)
-  [/index.html](#)