

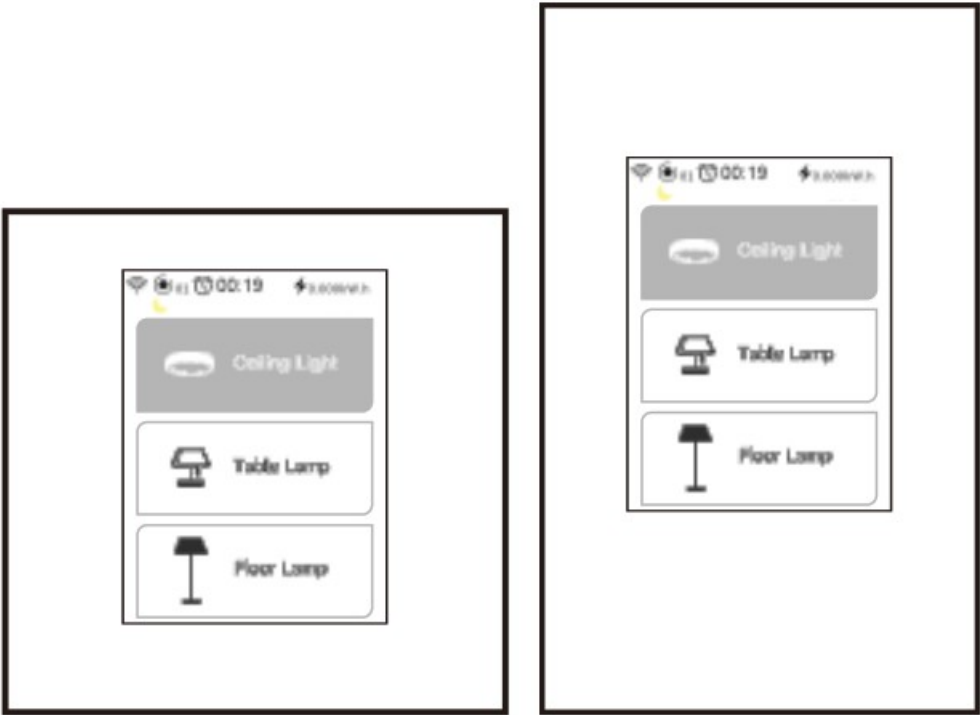


LANBON L8 LCD Smart Switch- EU Standard User Manual

[Home](#) » [LANBON](#) » LANBON L8 LCD Smart Switch- EU Standard User Manual 



L8 SERIES
SMART LCD SWITCH





This product compatible with Google Home & Amazon Echo

Contents

- 1 Company profile and pre-installation Instructions
- 2 Wiring Diagram
- 3 About account
- 4 Interface of the switch
- 5 Operating interface of the switch
- 6 Switch setting interface
- 7 Delay function
- 8 Timing function
- 9 Change switch style
- 10 WiFi configuration1
- 11 Warranty card
- 12 Documents / Resources
- 13 Related Posts

Company profile and pre-installation Instructions

L8 Introduction:

L8 series is new launched smart switch with LCD touch screen. One switch can be switched to 5 different switches, you can also change the switch icon and name, it is more intuitive and convenient to use. It supports voice control, APP control, and remote control at the same time, it will bring a new experience to your life, thank you for your choice.

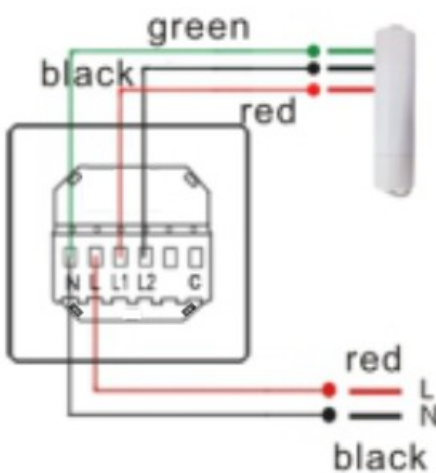
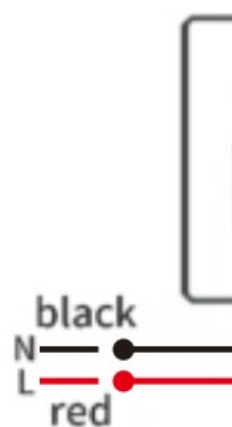
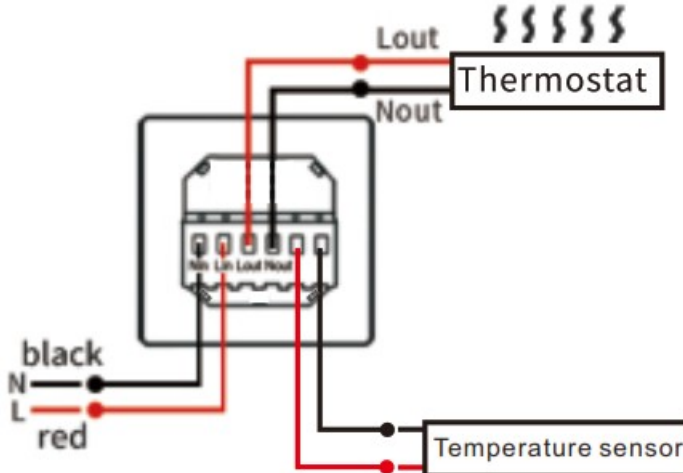
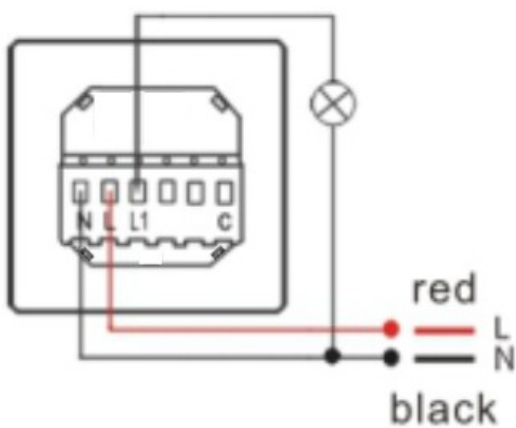

Before you install

Warning!

Improper installation can be dangerous or illegal. Multiple circuit breakers might need to be powered off for safe installation, if you are not familiar with electrical work, please call a professional electrician. Make sure your wiring is compatible. Landon Dimmer can replace only monopole Switch, if your lights can be operated from two different wall switches, that is bidirectional switch, Landon Dimmer is not compatible.

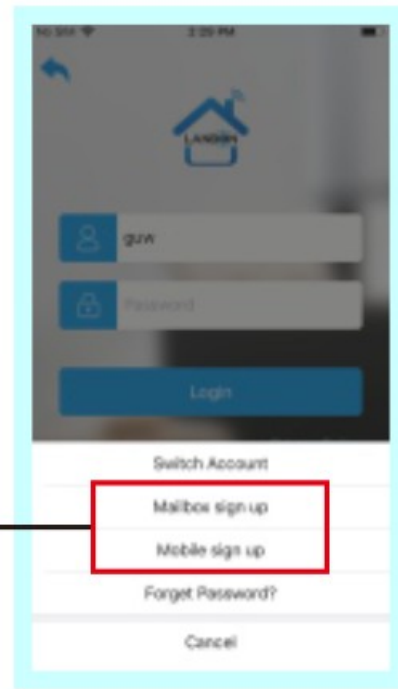
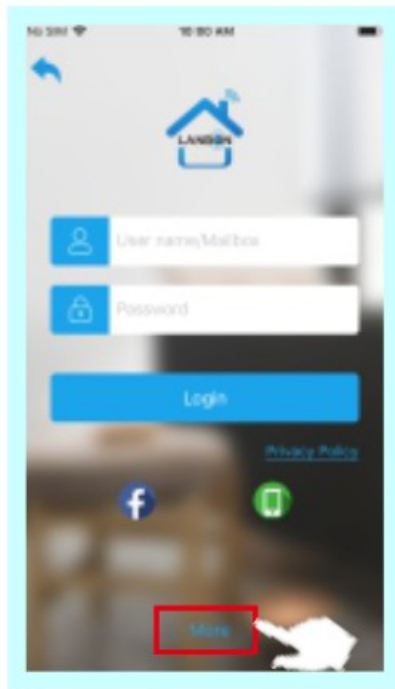
Wiring Diagram

1. One Gang Wiring Diagram	2. Two Gang Wiring Diagram	3. Three Gang

4. Curtain Switch Wiring Diagram	5. Scene Switch Wiring Diagram	
 <p>L8-HS (Curtains Switch)</p>	 <p>L8-HS (Scene Switch)</p>	
6. Thermostat Switch Wiring Diagram	7. Dimmer Switch Wiring Diagram	8. Bc
 <p>L8-HS (Thermostat switch)</p>	 <p>L8-HD (Dimmer switch)</p>	 <p>L8-Bc (Bistable switch)</p>

About account

1. Register account with your mobile phone or email address



Email registration or mobile registration

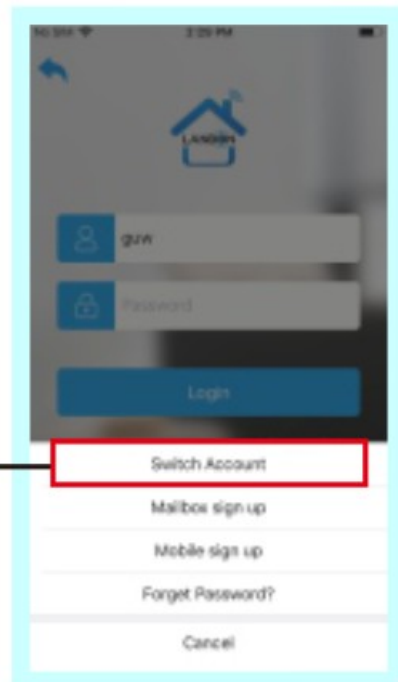
2. Enter your account and password to log in, you can also switch multiple accounts.



Enter
account

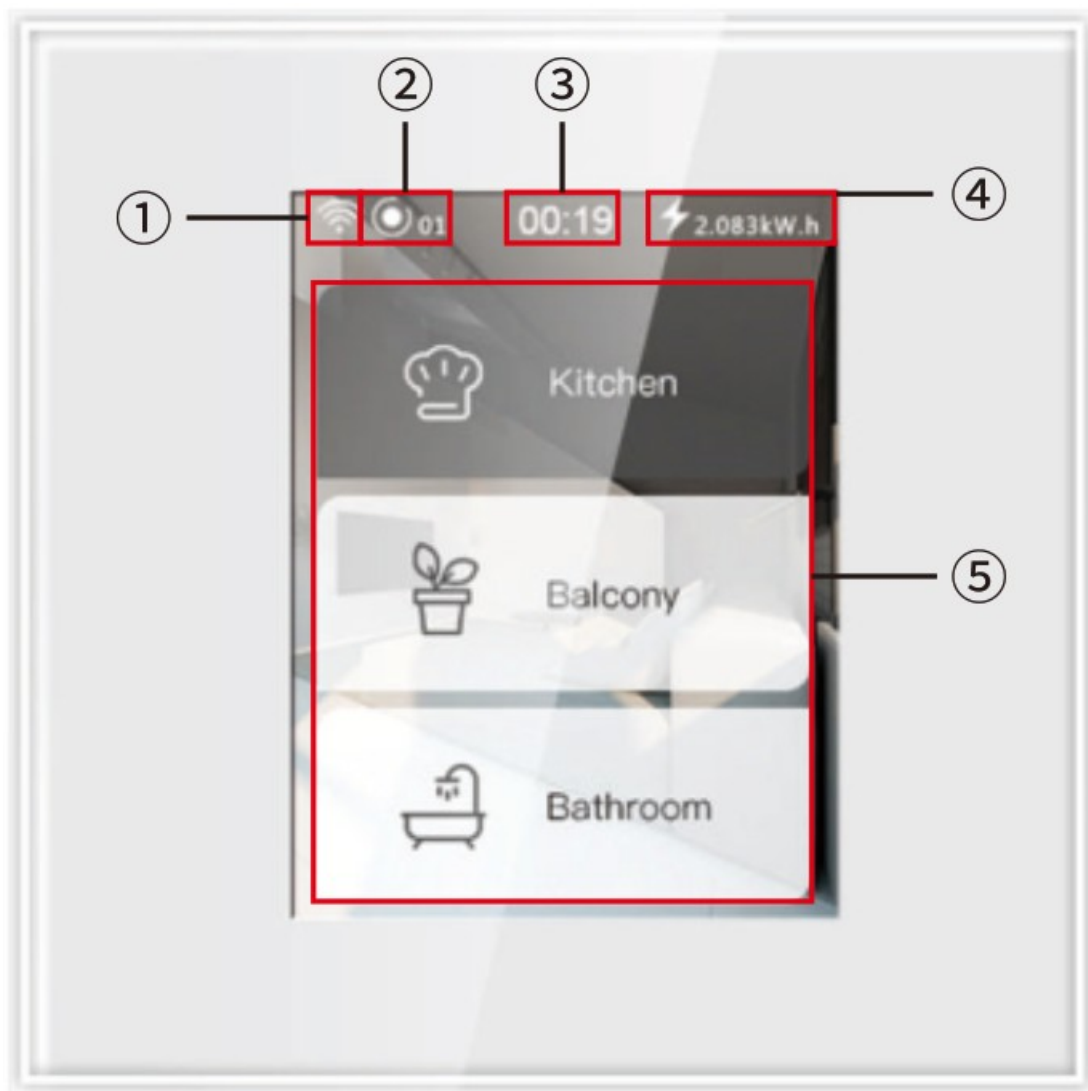
Input
password

Switch
account



Interface of the switch

Understand the main interface of the switch



1. Whether the switch is connected to the router
(White means connected, red means not)
2. Number of devices, represents the total number of L8 switches under the current router
3. Current time
4. The amount of power used by the switch since it was installed
5. Three gang switch

Operating interface of the switch

1. gang, 2 gangs, 3 gang switch

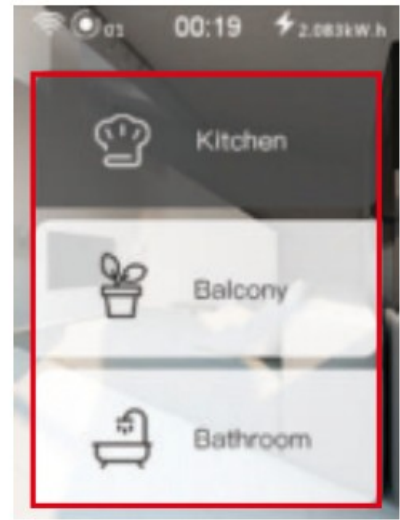
Simply click the button on the switch to turn it on or off Very convenient and fast.



1 gang switch



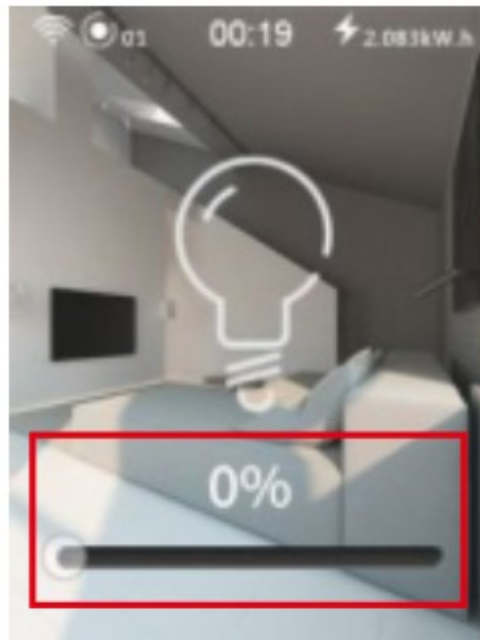
2 gang switch



3 gang switch

2. Dimmer switch

Press and hold the circle to control the brightness of the light.



Dimmer switch

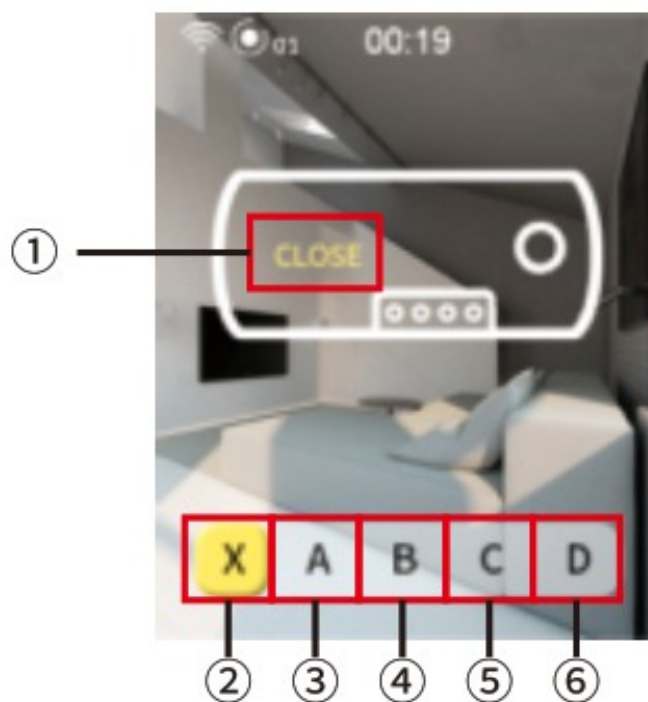
3. Curtain switch

1. Adjust by percentage
2. Button control

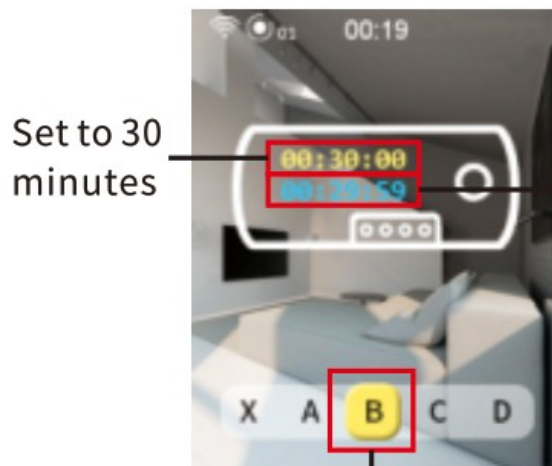
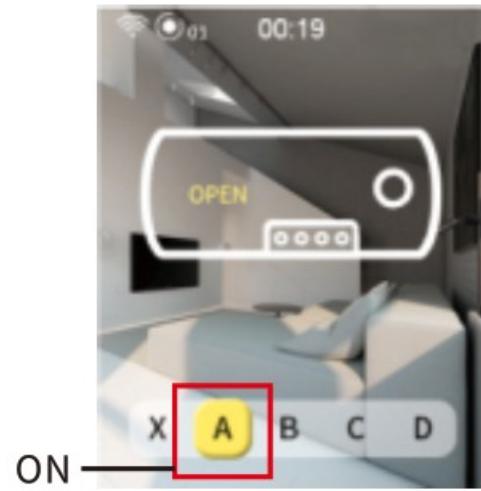
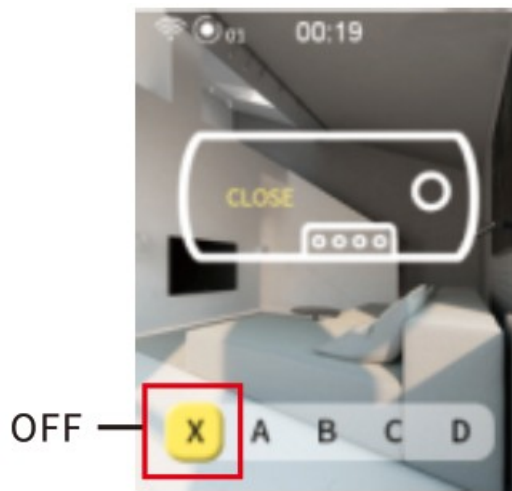


Curtain switch

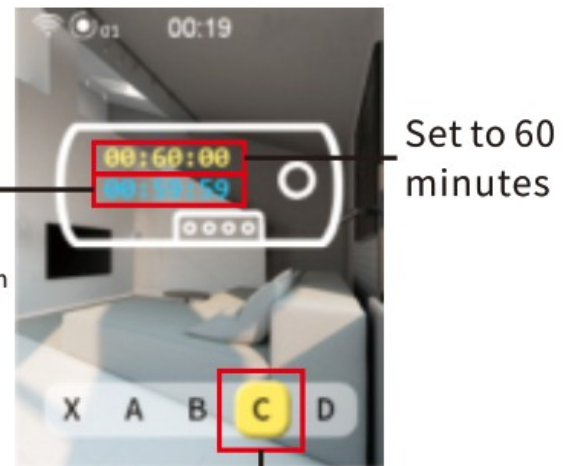
4. Boiler switch



1. Display water heater status
Water heater control button
2. OFF
3. ON
4. On for 30 minutes
5. On for 60 minutes
6. Custom settings

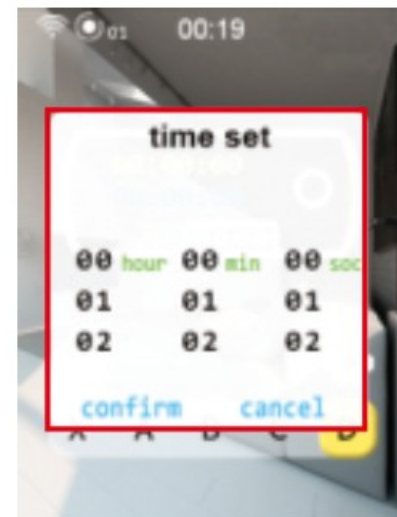
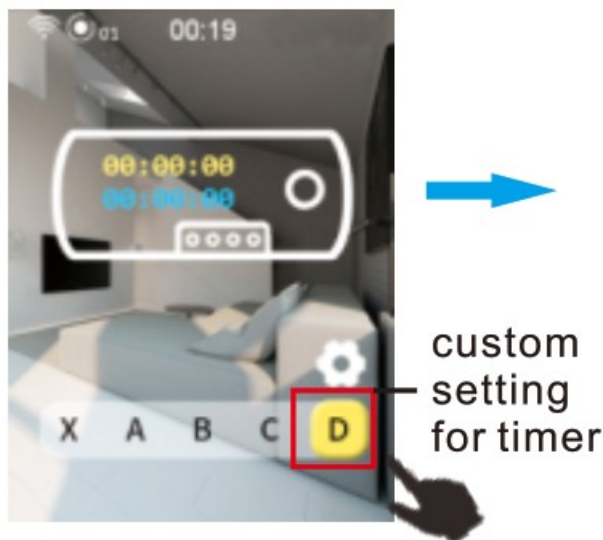


Countdown

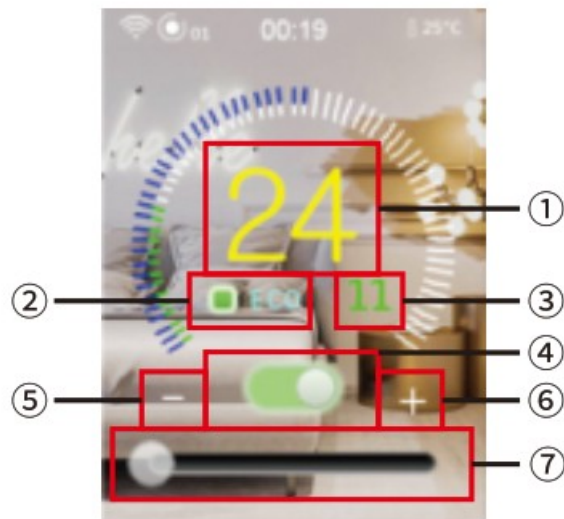


The water heater switch is automatically turned off after being turned on for 30 minutes.

The water heater switch is automatically turned off after being turned on for 60 minutes.



5. Thermostat switch



- 1. Set temperature
- 2. Green mode
- 3. Current room temperature
- 4. Turn the thermostat on or off

- 5. Decrease 1 degree
- 6. Increase 1 degree
- 7. Quick temperature setting

6. Scene switch

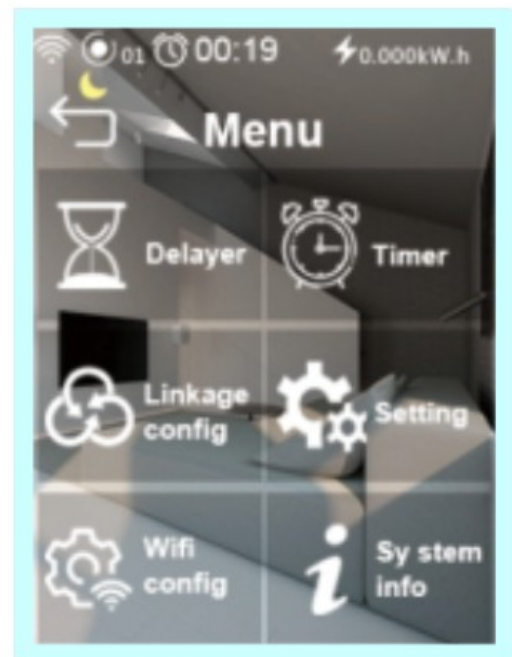
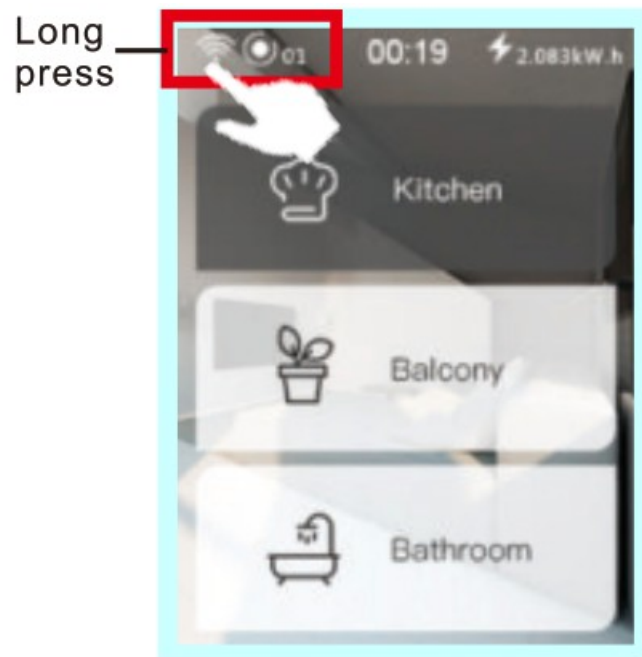


Simply click the button on the switch to turn on or off scene

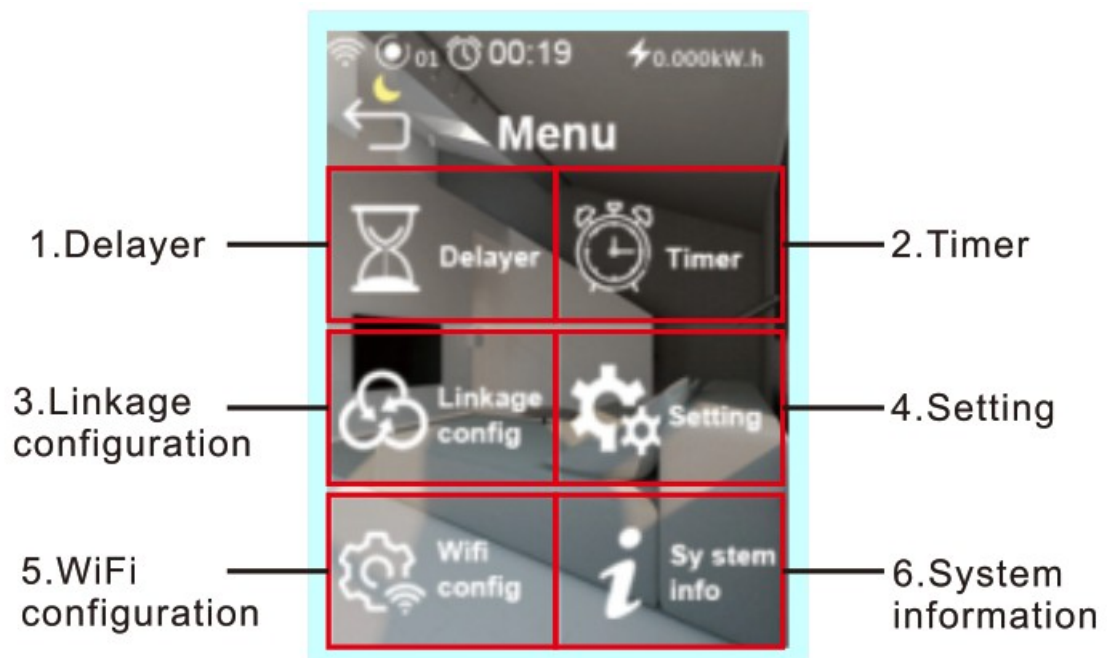
Can change scene on the phone, how to change the scene, please read P25

Switch setting interface

1. Long press to enter setting interface



2. Setting interface introduction



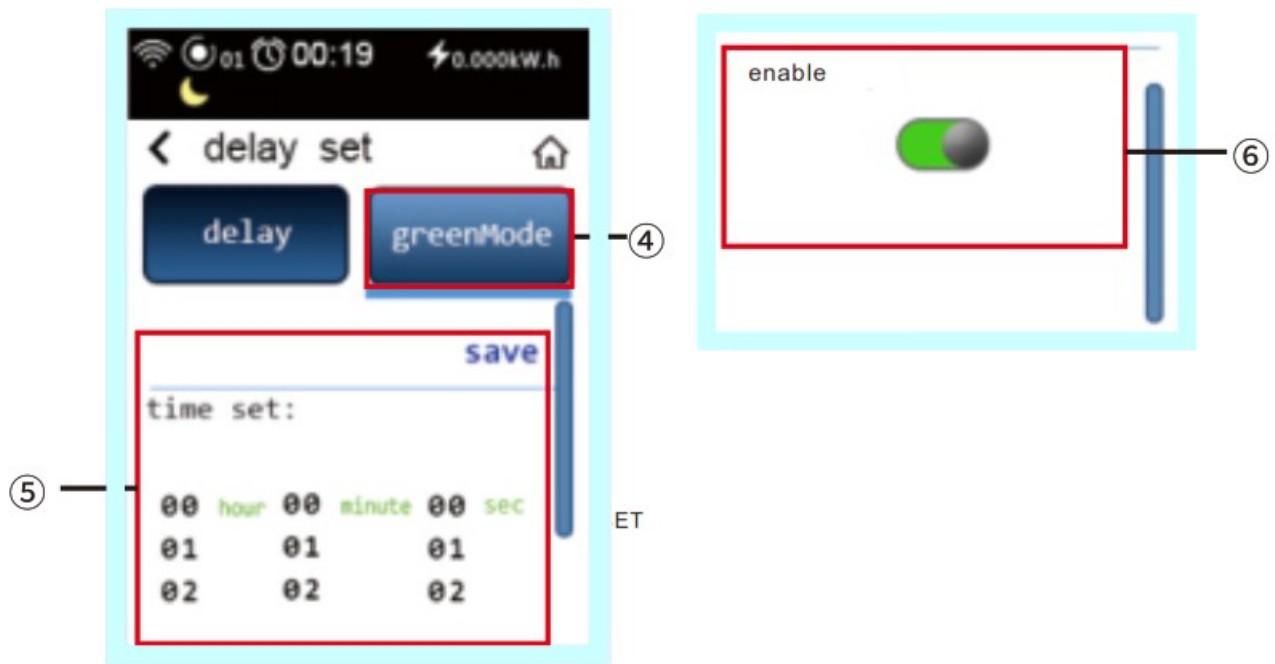
Delay function 

Delay setting

Quickly return to the switch control interface



Green mode setting

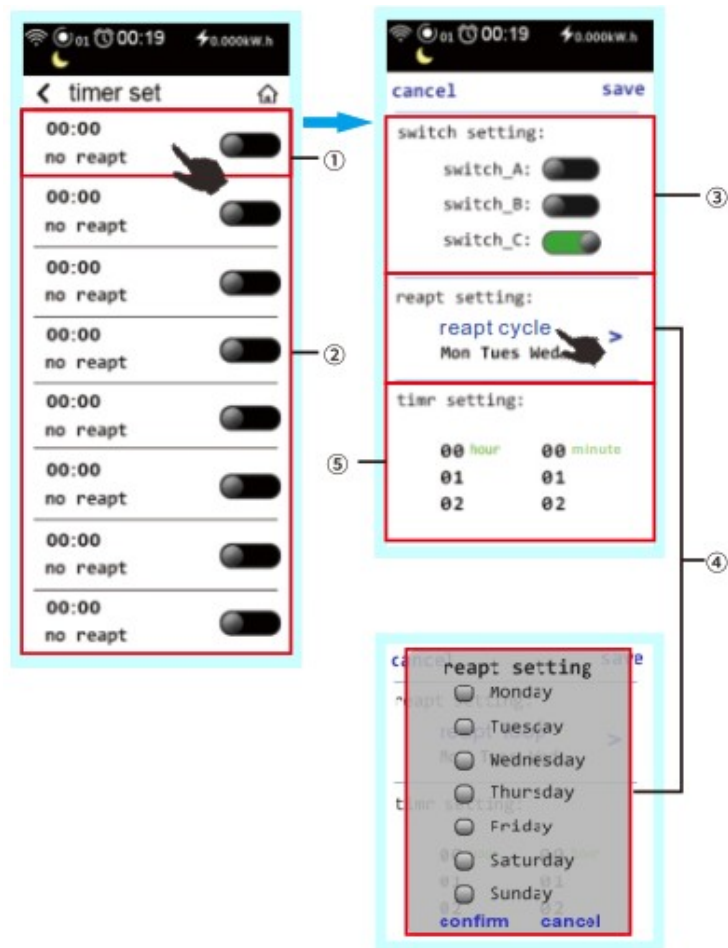


- 4. Green mode
- 5. Time setting
- 6. Run green mode


Timing function



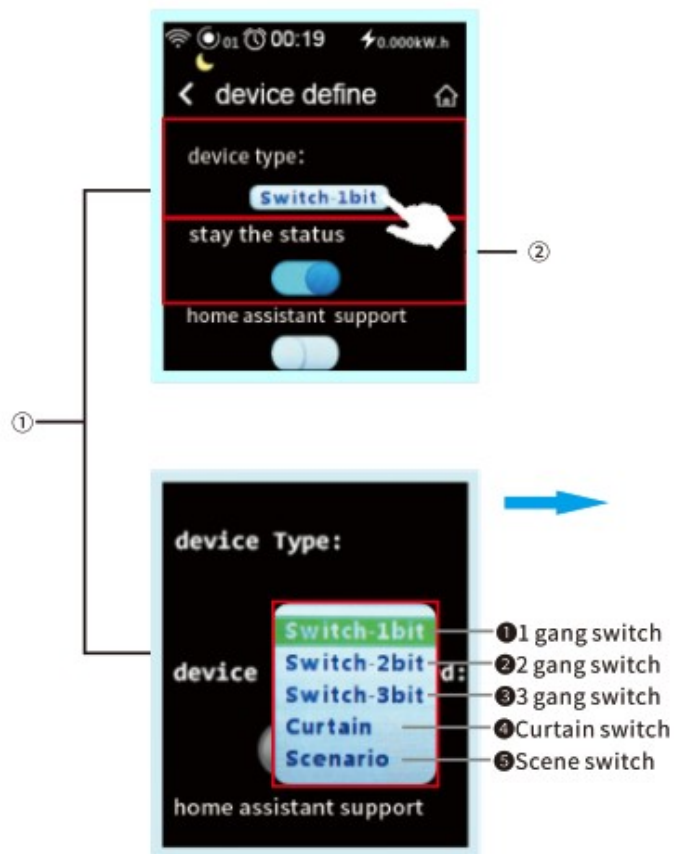
8 timer setting



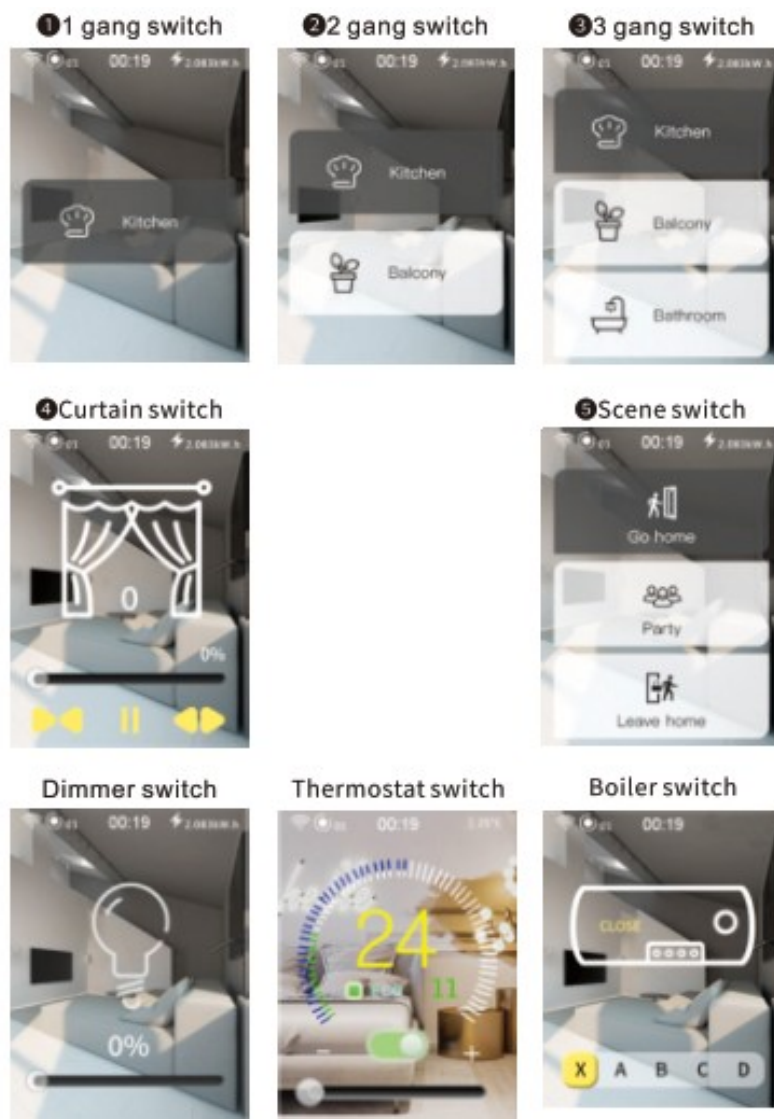
- Press blank area enter
- 8 group timer
 3. Choose status of each switch
 4. Choose repeat time
 5. Set atime. the switch will turn on/off automatically Setting interface

Change switch mode1 

Setting interface

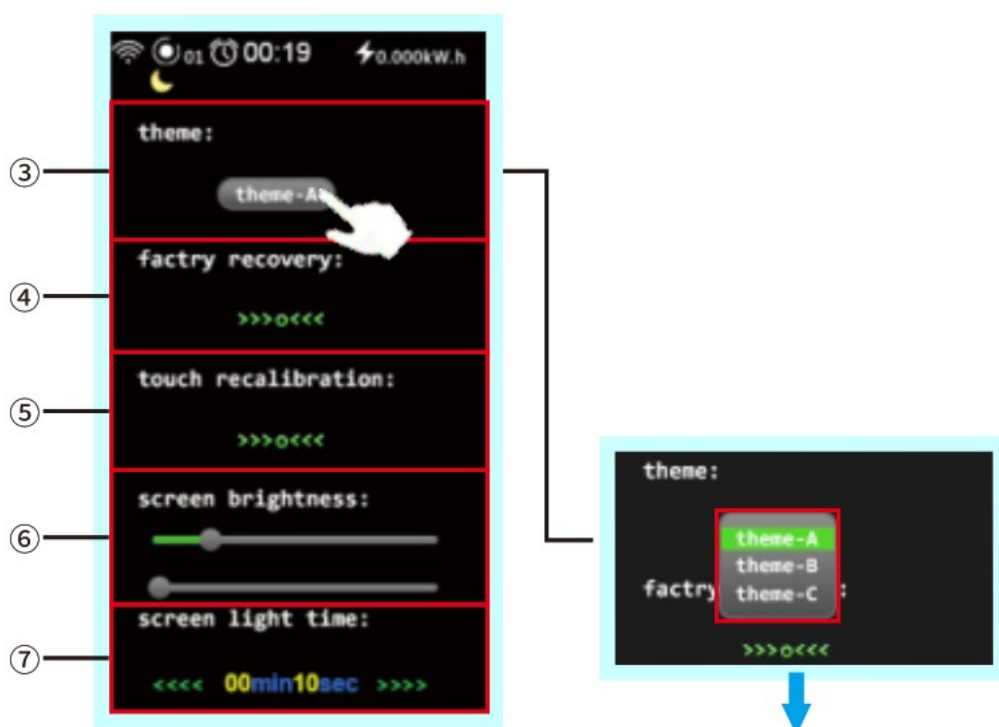


Change switch in setting



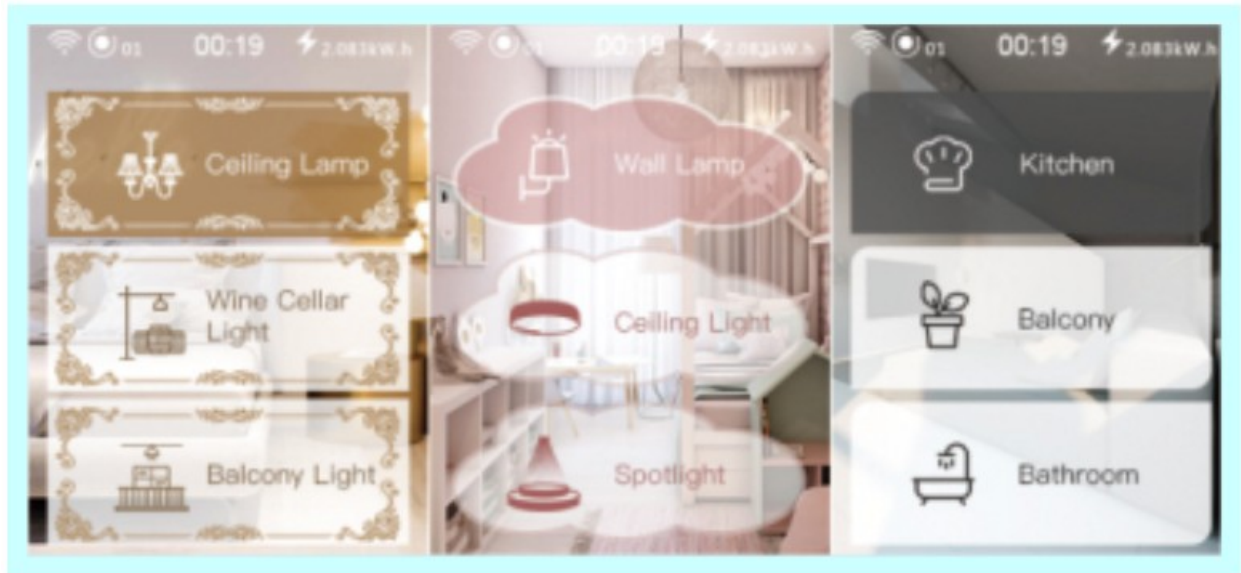
Change switch style

Setting interface introduction



1. Choose switch interface
2. Power off memory :stay the status when power off, cancel the status when power off.
3. 3 style option
4. Restore to factory set
5. Screen touch calibration
6. Screen brightness
7. Bright time setting

Style (A. European style, B. Lovely style, C.simple style can also choose the style in-app, Detailed operation please refer to P14



A

B

C

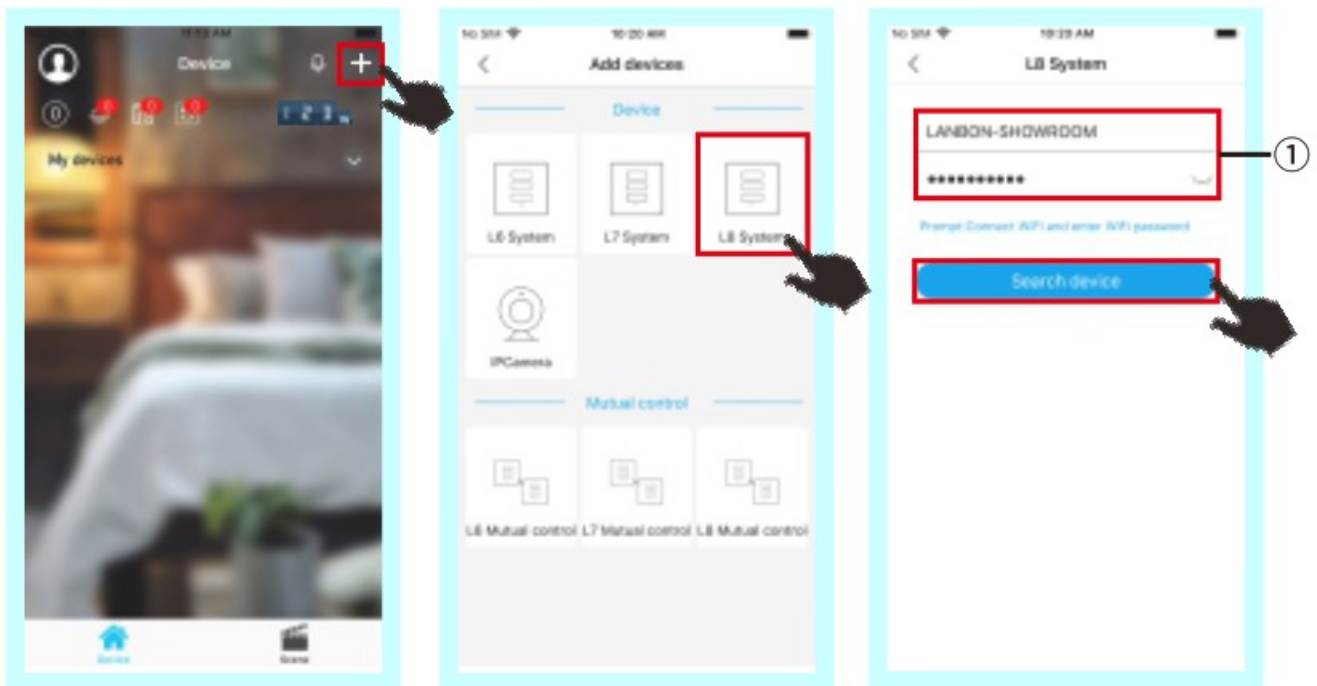
WiFi configuration1



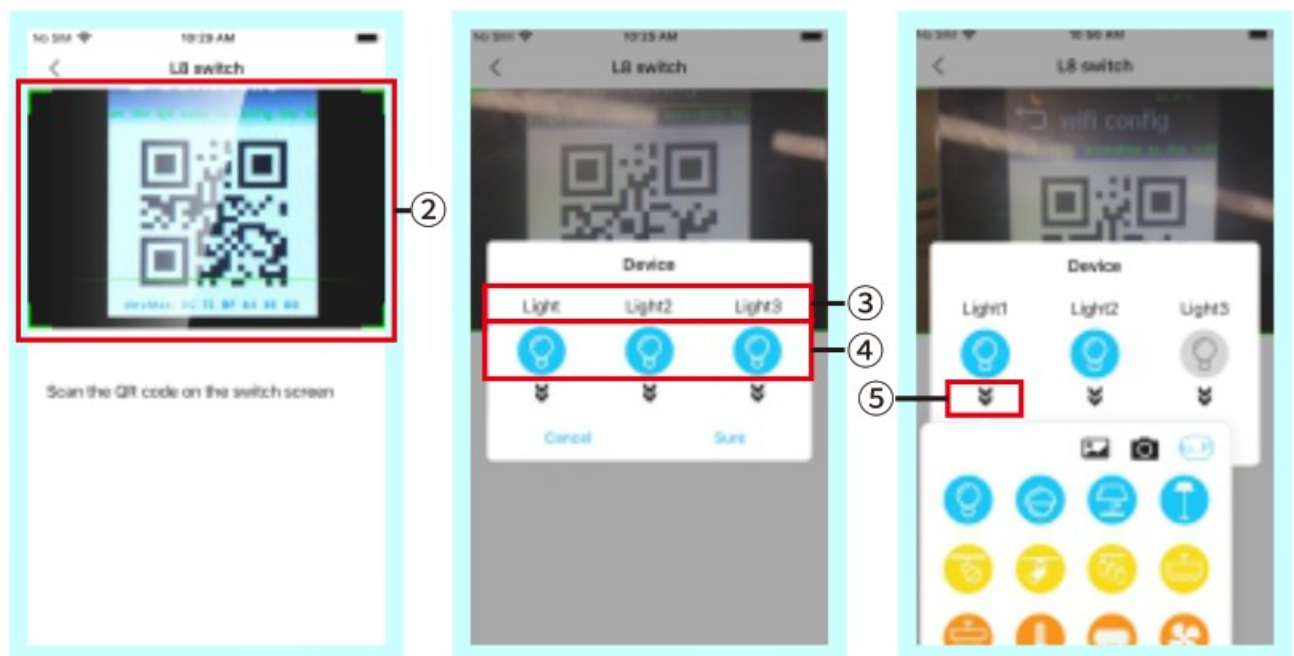
1. Press wifi setting, enter WiFi configure interface (wired means configuration failed)



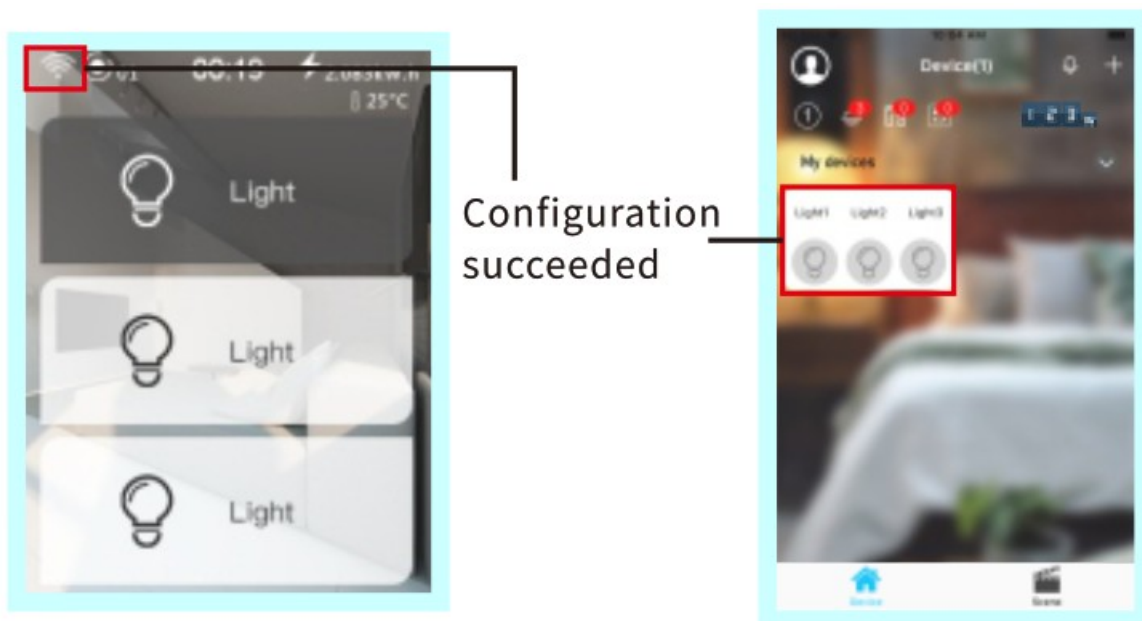
2. Open App



3. Mobile phone scan the QR code on switch



1. Input right WI-FI password
 2. Scan the QR code on switch
 3. Changename
 4. Changeicon
 5. Press and choose the icon from below gallery. can aslo take photo as icon (Only switches with version above 1.0.24 support)
4. **Switch and app configuration succeeded**



Warranty card

Warranty clause:

Within 3 months from the date of purchase, free replacement 2 years warranty Damage caused by following reasons, no free repairing Beyond the prescribed warranty period Damage caused by operation not following instructions Users dismantle, repair, and other man-made damage

User name	
Phone number	
ID number	
Address	
Sellers	
Purchase date	
Repairing record	

Remind: Please save this card. Bring this card and product together to local agent to repair.

Certificate

Voltage: 100V-250V

Frequency: 50Hz-60Hz

Output: 10A/16A

Inspector: _____

Date: _____

This product passed strict inspection, ease of use.+



support android/ios

Scan and download app
Or get more technical support



APP Download

<http://www.lanbon.cn/en/app.html>



Technical Support

<http://www.lanbon.cn/en/support.html>

If need more, please contact



Shenzhen Lanbon HI-Tech CO, Ltd



B44 lanbon@lanbon.cn



8 <http://www.lanbon.cn/>



9 3rd Floor, ZhanRun Business Building. Yunfeng Road NO.1, QueShan Industrial Ared, Dalang, Longhua district, Shenzhen, China

Warning:

This device complies with Part 15 of the FCC Rules. Operation is subject to the following two conditions:

1. this device may not cause harmful interference, and
2. this device must accept any interference received, including interference that may cause undesired operation.
changes or modifications not expressly approved by the party responsible for compliance could void the user's authority to operate the equipment.

NOTE: This equipment has been tested and found to comply with the limits for a Class B digital device, pursuant to Part 15 of the FCC Rules. These limits are designed to provide reasonable protection against harmful interference in a residential installation. This equipment generates, uses, and can radiate radio frequency energy and, if not installed and used in accordance with the instructions, may cause harmful interference to radio communications. However, there is no guarantee that interference will not occur in a particular installation. If this

equipment does cause harmful interference to radio or television reception, which can be determined by turning the equipment off and on, the user is encouraged to try to correct the interference by one or more of the following measures:


- Reorient or relocate the receiving antenna.
- Increase the separation between the equipment and receiver.
- Connect the equipment into an outlet on a circuit different from that to which the receiver is connected.
- Consult the dealer or an experienced radio/TV technician for help.

NOTE: This device and its antenna(s) must not be co-located or operation in conjunction with any other antenna or transmitter

RF Exposure Statement

To maintain compliance with FCC's RF Exposure guidelines, This equipment should be installed and operated with minimum distance of 20cm the radiator your body. This device and its antenna(s) must not be co-located or operation in conjunction with any other antenna or transmitter

Documents / Resources

	<p>LANBON L8 LCD Smart Switch- EU Standard [pdf] User Manual L8HS, 2ASYZ-L8HS, 2ASYZL8HS, L8, LCD Smart Switch- EU Standard, L8 LCD Smart Switch- EU Standard, Smart Switch- EU Standard</p>
---	--