



Lanberg SM01-WP10 Smart Wi-Fi Plug User Manual

[Home](#) » [Lanberg](#) » Lanberg SM01-WP10 Smart Wi-Fi Plug User Manual 



USER MANUAL
Smart WiFi Plug
SM01-WP10

Contents

- [1 Safety precautions](#)
- [2 Package content](#)
- [3 Product description](#)
- [4 Mounting](#)
- [5 How to download Tuya App](#)
- [6 Login/Register using TuyaSmart App](#)
- [7 Pairing with TuyaSmart App](#)
- [8 Functions available in the TuyaSmart App](#)
- [9 Technical specification](#)
- [10 Troubleshooting](#)
- [11 Warranty](#)
- [12 Symbol description](#)
- [13 Documents / Resources](#)
 - [13.1 References](#)
- [14 Related Posts](#)

Safety precautions

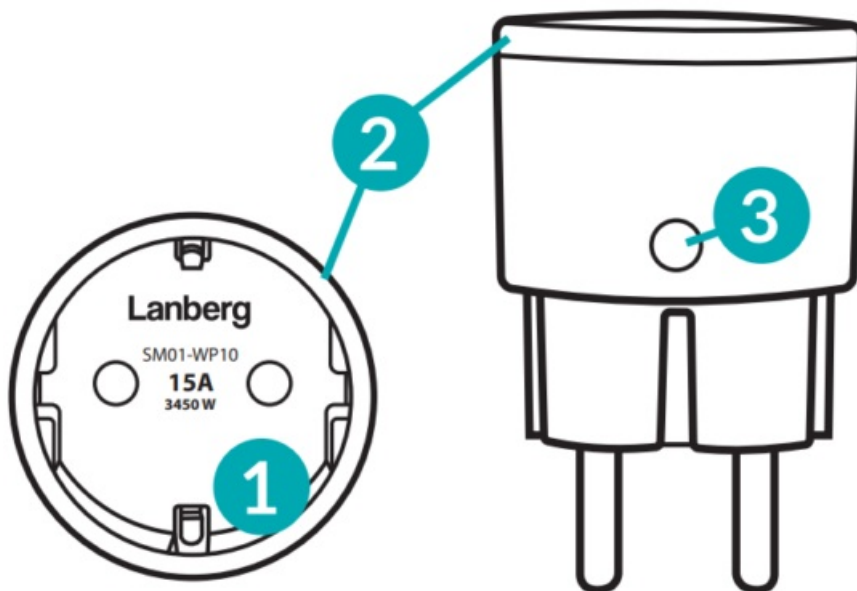
1. The device is intended for indoor use only
2. Do not expose the device to moisture, which can cause permanent damage to the device
3. A stable Wi-Fi connection – 2.4GHz band – is required for the sensor to work correctly
4. Do not install multiple SMART Wi-Fi devices very close to each other – it may cause signal interference
5. Contact your dealer/distributor for assistance if there is any problem with your product. Do not attempt to repair this product by yourself

Package content

1. Smart Plug
2. User Manual
3. Declaration of Conformity

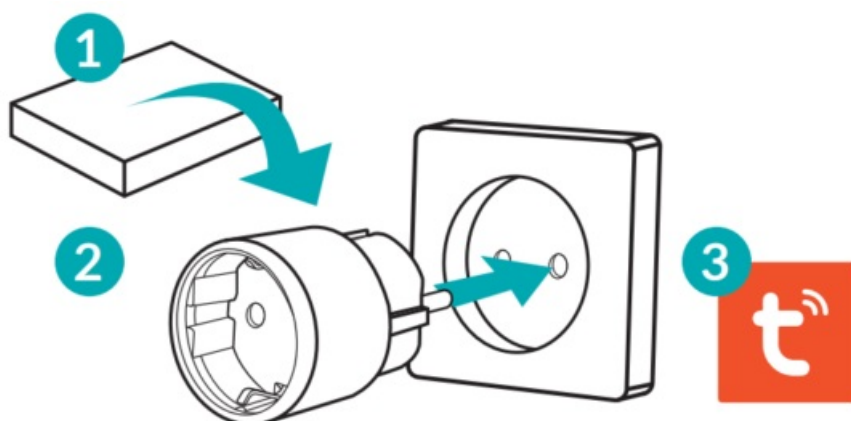
Product description

1. Schuko socket
2. LED
3. Reset button

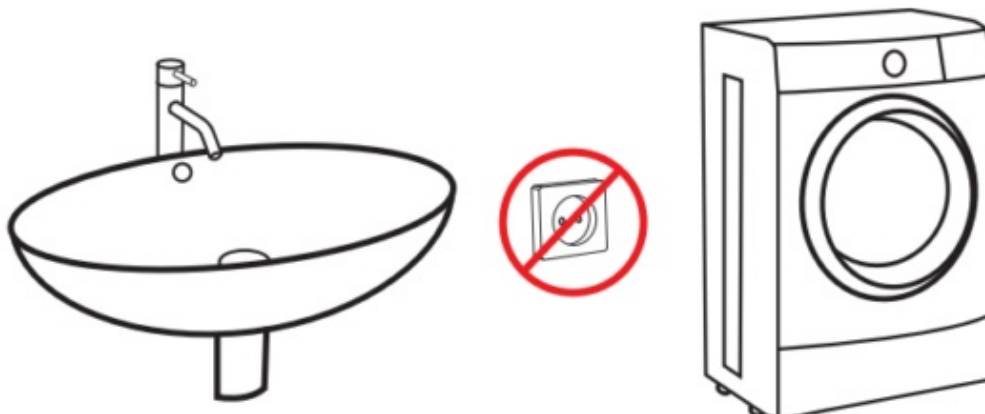


Mounting

1. Remove the product from the packaging.
2. Plug the product into a 230V wall socket
3. The device should start automatically, begin pairing it with TUYA application (See section G)



Warning: the device should be mounted in a dry place, we do not recommend using the product in bathrooms, under the sink,s, and other places where humidity is high, this may damage the device.



How to download Tuya App

The App can be downloaded in two ways:

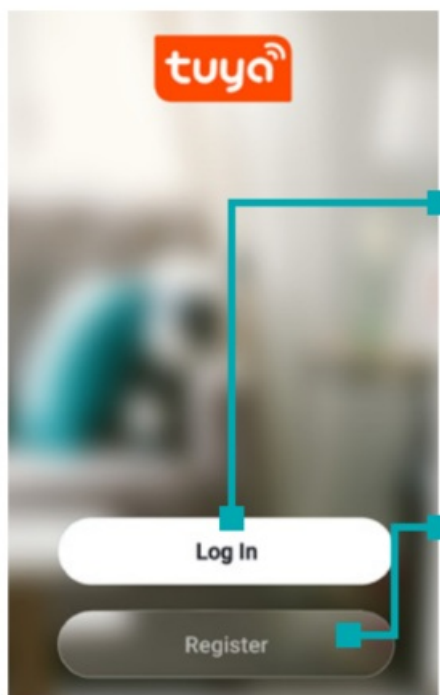
1. Download the App from Google Play or App Store.
 - a. Android mobile device: Type and search „TuyaSmart” in Google Play.
 - b. iOS mobile devices: Type and search „TuyaSmart” in App Store.
2. Use the provided QR code, on the next page, available for devices with the iOS or Android operating systems.



<http://smart.tuya.com/download>

Important note: After scanning the QR code, the default browser window will open (e.g. Safari). In the newly opened window, click “Download” and then select the option to open using the App Store / Google Play to download the application.

Login/Register using TuyaSmart App



If you already have an account with TuyaSmart, click the **"Login using an existing account"** button and follow the on-screen instructions.

If you do not have an account, you will need to create a new one. Use the **"Register"** button and follow the on-screen instructions.

Pairing with TuyaSmart App

• Powering and pairing the device

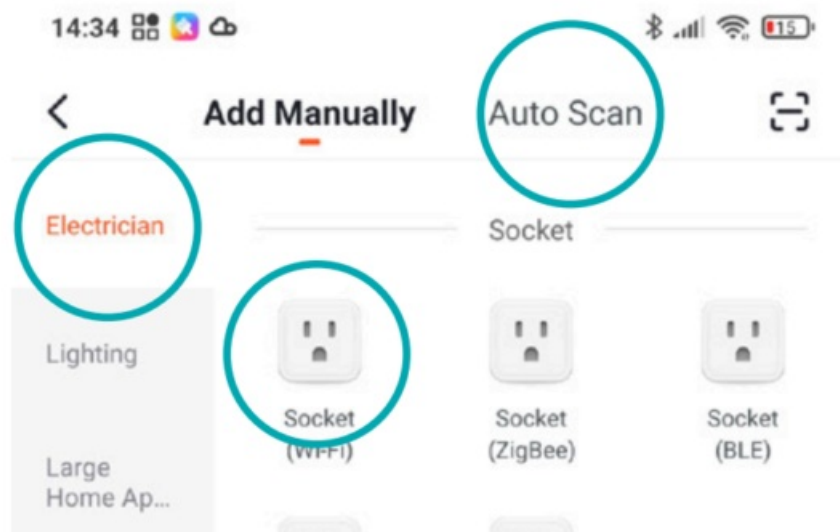
1. Take the product out of the packaging
2. Plug the product into a 230 V wall socket

• Adding new devices

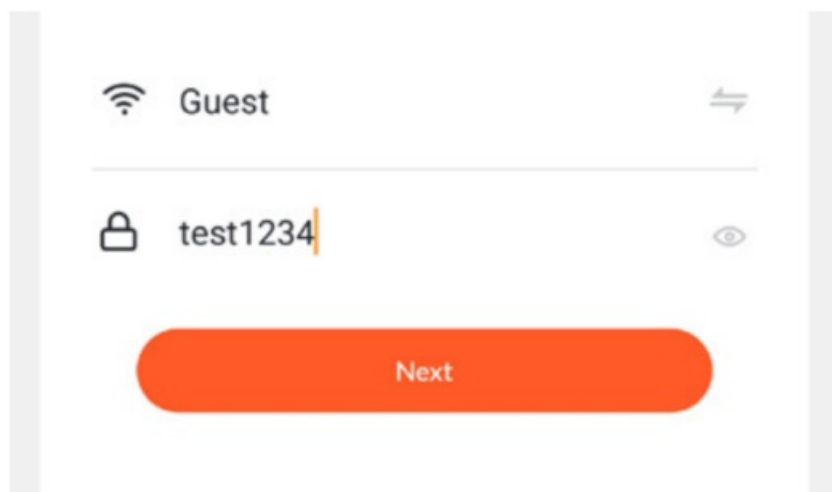
1. Press the “+” symbol in the upper right corner of the application.



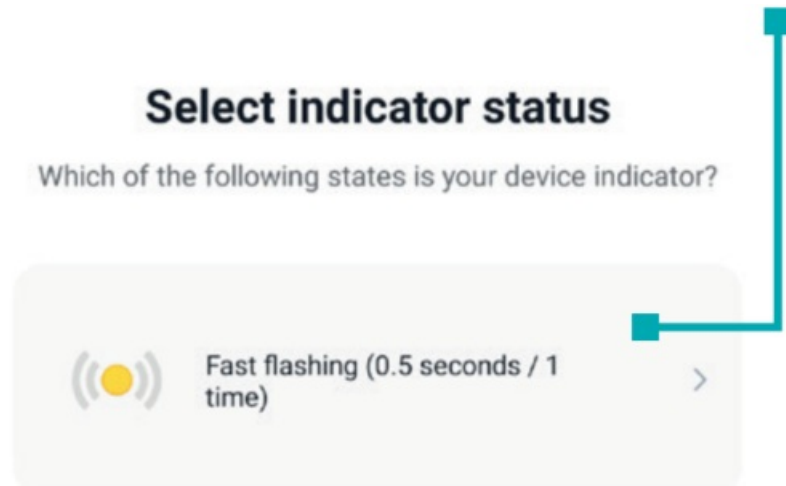
2. Next, select the “Socket (WiFi)” from the “Electrician” category, alternatively, you can use the “Auto Scan” function at the top of the window.



3. Important note: Adding a new device will only be possible if the smartphone has a Wi-Fi connection enabled and is connected to the network to which you want to connect the Smart Lanberg device.
4. Enter the password for the currently connected Wi-Fi network and press “Next”.

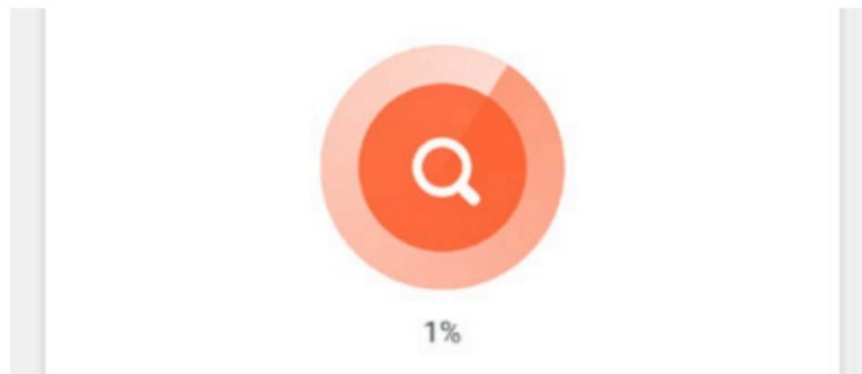


5. Next, select the “Fast flashing” option – after choosing it, the device search will commence.



6. Important note: If the LED on the device is not flashing, press the reset button for about 5 seconds. After that time, it should be flashing and the pairing process can be resumed.

7. The App searches for devices to add, the plug should be as close to the smartphone as possible.

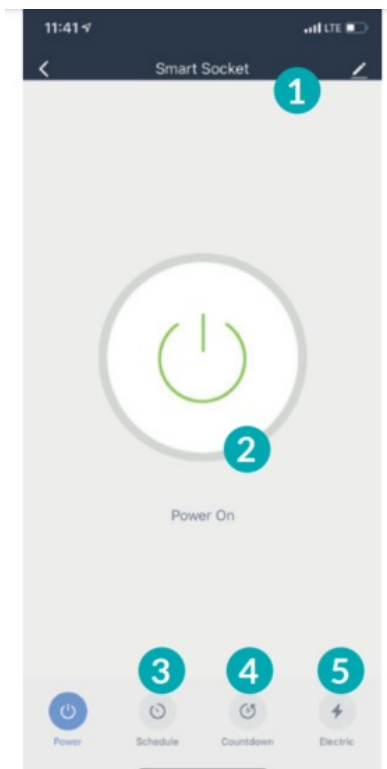


8. The device has been added successfully, we recommend that you test the device (e.g. turn on/off plug using Tuya App).

Important note: If the pairing process has failed, please repeat the whole process from the beginning by resetting the device as in point 6. During this procedure, it is recommended to bring the device as close to the phone as possible.

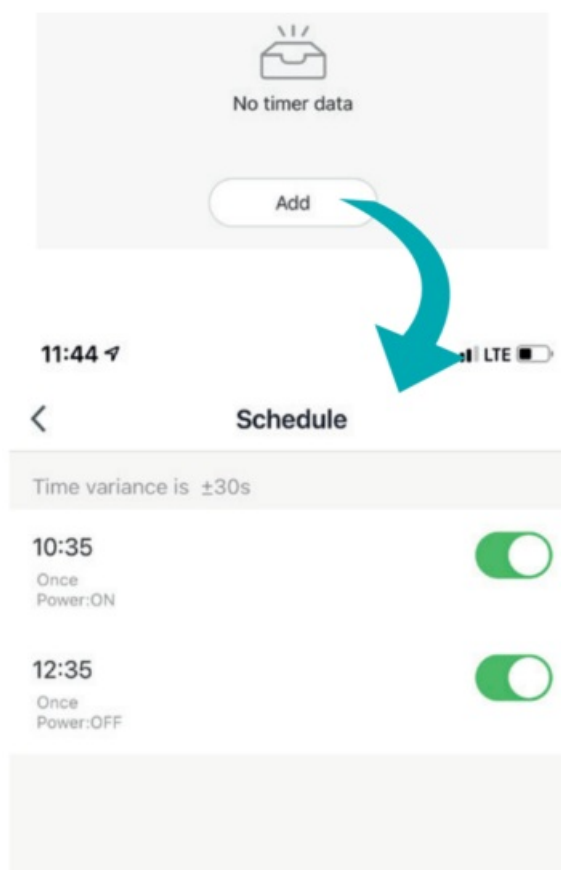
Functions available in the TuyaSmart App

Main menu of the device:



1. 1Name
2. ON/OFF Button
3. Schedule
4. Countdown
5. Electric

Schedule



Set the option to turn on/off the device according to schedule.

Countdown

Countdown

00

Hour

00

Minute

01

01

02

02

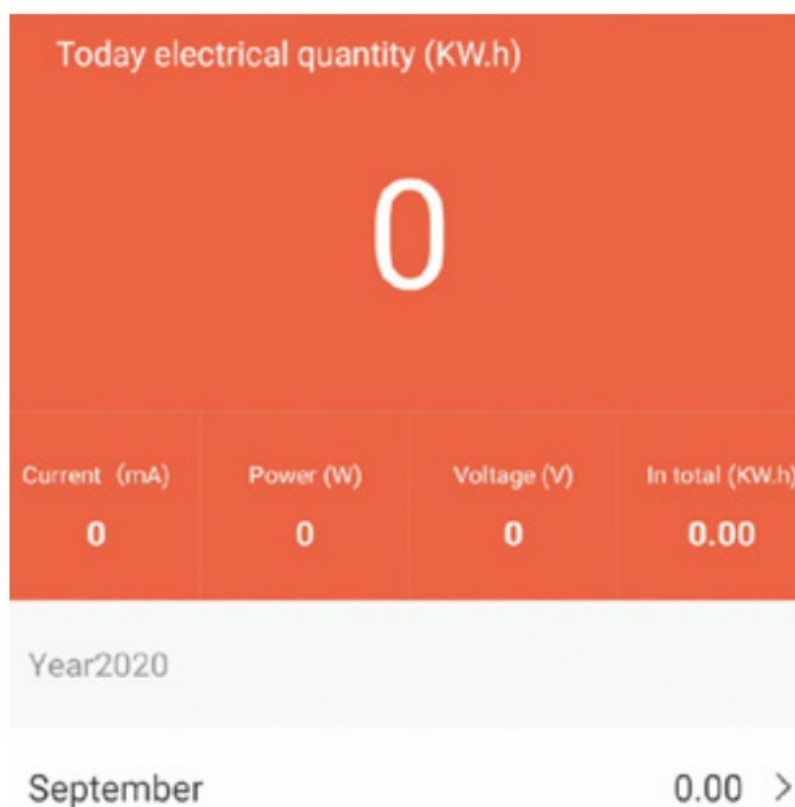
03

03

Ok

Allows you to set a timer that will turn off / on (depending on the current status of the device) the socket after a certain time.

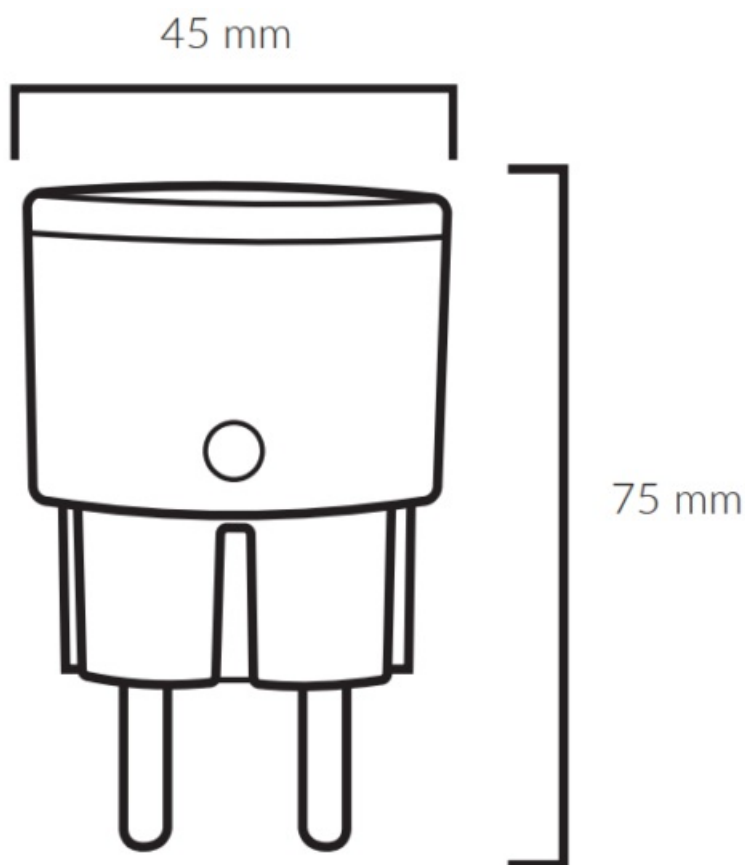
Electric



Allow to check current Energy usage, also enables to view the history of power usage.

Technical specification

Dimensions	Socket	75 x 45 mm
Power	Mains supply	230 V 50 Hz
Wireless	Wi-Fi	2.4 GHz, IEEE 802.11b/g/n
Management	Remote control	Via TuyaSmart App
	Supported OS versions	iOS: 8.0 or newer Android: 4.4 or newer
Housing	Material	ABS



Troubleshooting

Problem: The device's LED stopped flashing but the sensor has not been added to the TuyaSmart App

Possible reason: The pairing process was unsuccessful

Solution: Reset the sensor by pressing the reset button for at least 5 seconds and start the process of adding a new the device in the application again

Problem: The device does not respond/respond with a delay

Possible reason: Insufficient WIFI range

Solution: Verify if the WIFI range is sufficient where the sensor is placed – a minimum of two bars are required

Problem: When adding a device, TuyaSmart continuously prompts you to enable a Wi-Fi connection

Possible reason: No active Wi-Fi on the phone

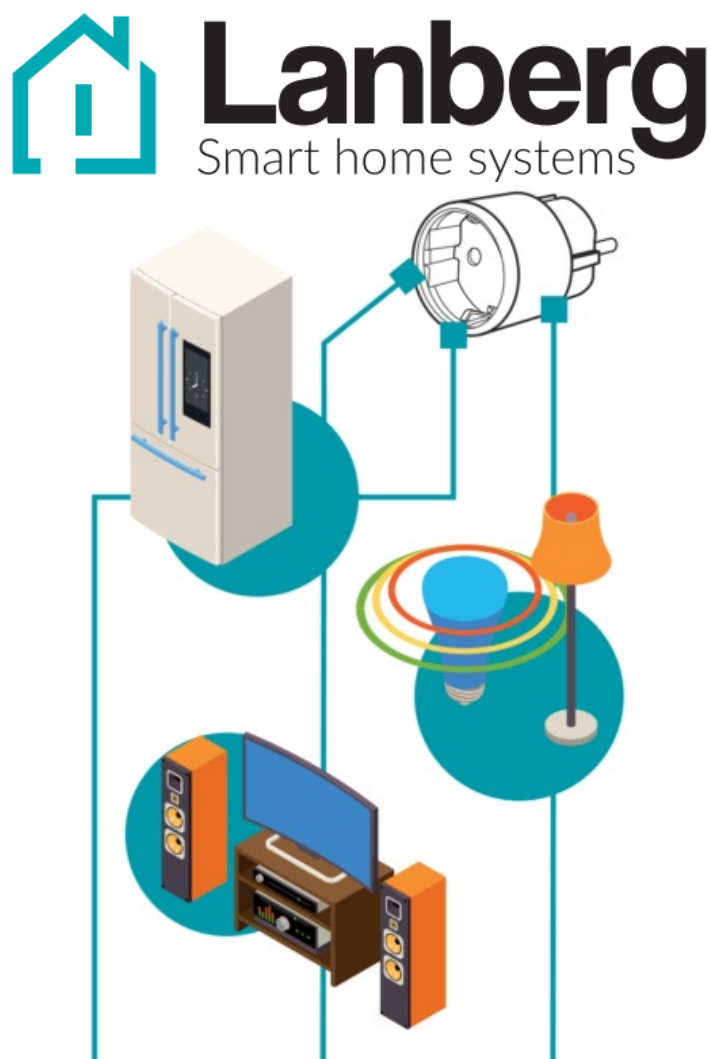
Solution: The pairing of the device will only be possible if the smartphone is connected to a 2.4 GHz Wi-Fi network band

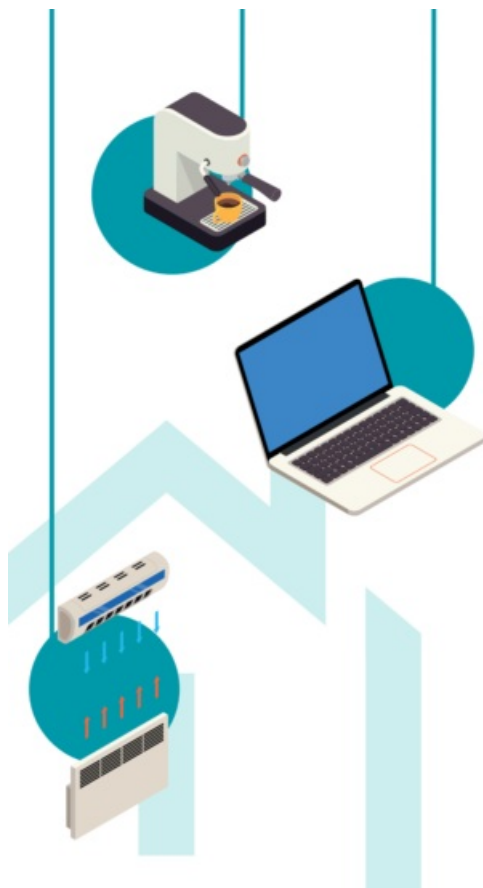
Warranty

The following Lanberg product is covered by a 24-month warranty from the moment of the purchase. It does not apply in case of defects and faults resulting from improper use and handling (not in accordance with this manual). Mechanical damages are the basis for rejecting the warranty claim.

Symbol description



The use of the WEEE symbol (crossed-out wheelie bin symbol) means that this product cannot be treated as household waste. Proper disposal of used equipment avoids risks to human health and the environment, resulting from the possible presence of hazardous substances, mixtures, and components in the equipment, as well as, improper storage and processing of such equipment. The selective collection also allows you to recover materials and components, from which the device was manufactured. For more information about the recycling of this product, please contact the retail outlet, where the product was purchased, or request information from the local authority.





www.lanberg.pl

Documents / Resources

  USER MANUAL INSTRUKCJA OBSŁUGI MANUAL DE INSTRUCCIONES Smart Wi-Fi Plug Gniazdko Wi-Fi Smart Tomka Wi-Fi Smart SM01-WP10	<p>Lanberg SM01-WP10 Smart Wi-Fi Plug [pdf] User Manual SM01-WP10, Smart Wi-Fi Plug, SM01-WP10 Smart Wi-Fi Plug</p>
--	---

References

- [Peryferia do rozbudowy sieci aktywnej i pasywnej | lanberg.pl](#)