



Lanberg SM01-DS01 Smart Door & Window Sensor User Manual

[Home](#) » [Lanberg](#) » Lanberg SM01-DS01 Smart Door & Window Sensor User Manual 

Lanberg SM01-DS01 Smart Door & Window Sensor User Manual



Contents

- 1 [Safety precautions](#)
- 2 [Package content](#)
- 3 [Product description](#)
- 4 [Product installation](#)
- 5 [How to download Tuya App](#)
- 6 [Login/Register using TuyaSmart App](#)
- 7 [Pairing with TuyaSmart App](#)
- 8 [TuyaApp Features](#)
- 9 [Technical specification](#)
- 10 [Troubleshooting](#)
- 11 [Warranty](#)
- 12 [Symbol description](#)
- 13 [Documents / Resources](#)
 - 13.1 [References](#)
- 14 [Related Posts](#)

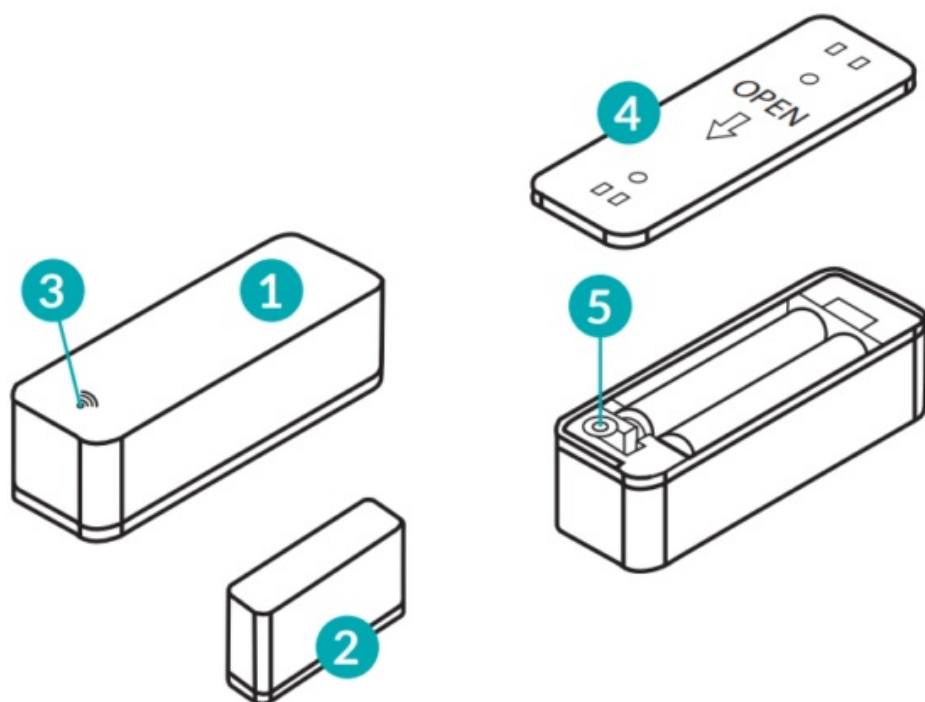
Safety precautions

1. The device is intended for indoor use only
2. Do not expose the product to moisture, which can cause permanent damage to both units.
3. Do not use batteries other than those specified in the manual, as this may damage the device.
4. A stable Wi-Fi connection – 2.4GHz band – is required for the sensor to work correctly.
5. Do not install multiple SMART Wi-Fi devices very close to each other – it may cause signal interference.
6. Contact your dealer/distributor for assistance if there is any problem with your product. Do not attempt to repair this product by yourself.

Package content

1. Door/window sensor
2. User Manual
3. Mounting accessories
4. AAA batteries: 2 pcs

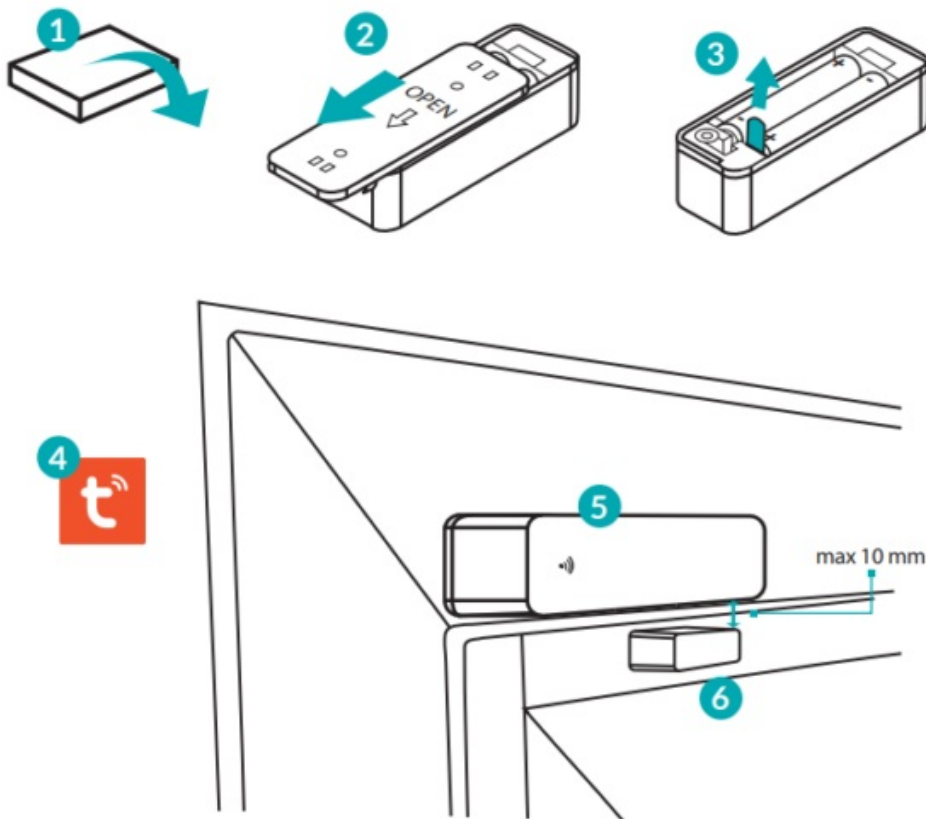
Product description



1. Main module
2. Magnetic module
3. LED indicator
4. Cover
5. Reset button

Product installation

1. Remove the product from the packaging.
2. Remove the cover of the main module.
3. Pull out the insulation sheet, device should start up in pairing mode
4. Before installing the device at the intended location, we recommend connecting the device with the TUYA App (see section G).
5. Attach the main module with a mounting tape at the desired location (e.g., on the window frame).
6. The magnetic module should be mounted on a moving object (e.g., door, window) so that, when closed, the devices are in line, and the gap between them is not greater than 10 mm.



How to download Tuya App

The App can be downloaded in two ways:

1. Download the App from Google Play or App Store.

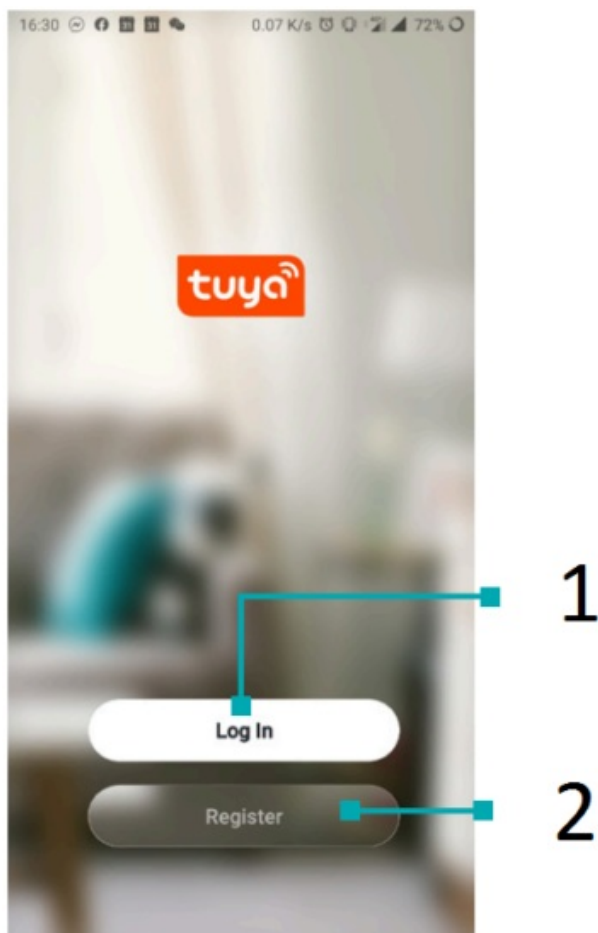
1. Android mobile device: Type and search “TuyaSmart” in Google Play.
2. iOS mobile devices: Type and search “TuyaSmart” in App Store.

2. Use the provided QR code, on the next page, available for devices with the iOS or Android operating systems.

Important note: After scanning the QR code, the default browser window will open (e.g. Safari). In the newly opened window, click **Download** and then select the option to open using the App Store / Google Play to download the application.



Login/Register using TuyaSmart App



1. If you already have an account with TuyaSmart, click the **Login using an existing account** button and follow the on-screen instructions.
2. If you do not have an account, you will need to create a new one. Use the Register button and follow the on-screen instructions.

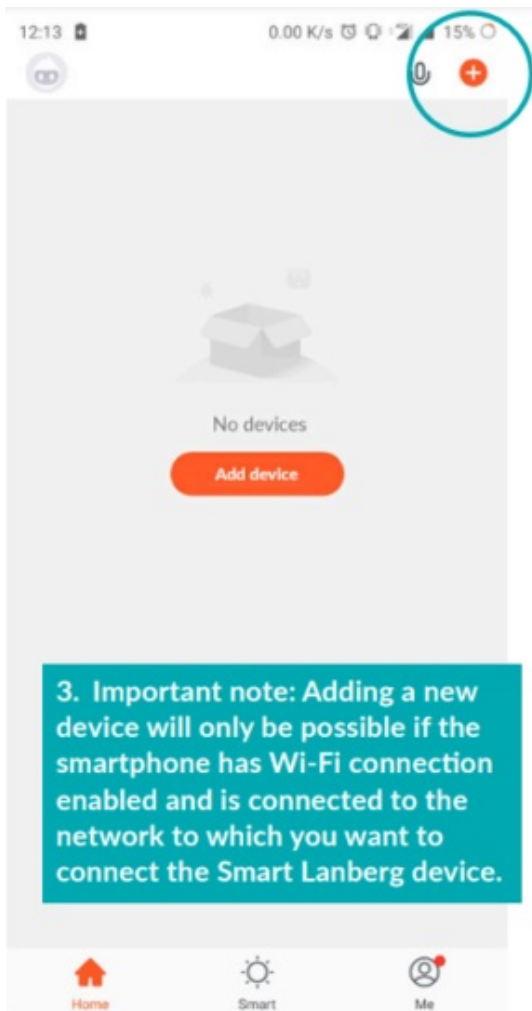
Pairing with TuyaSmart App

Powering and pairing the device

1. Take the product out of the packaging
2. Remove the cover of the main module and pull out insulation sheet
3. The device should start up immediately in pairing mode

Adding new devices

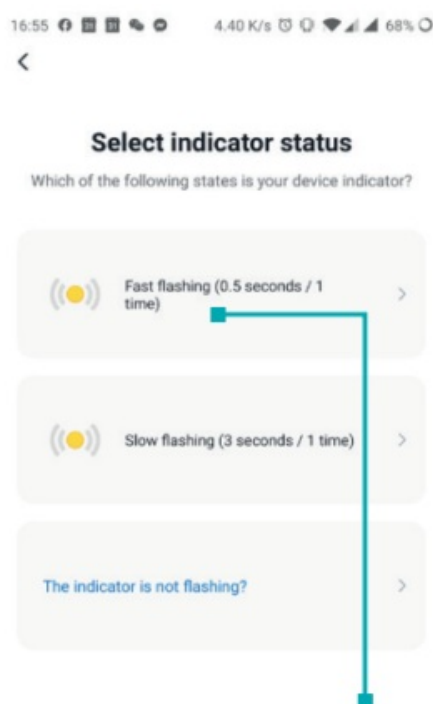
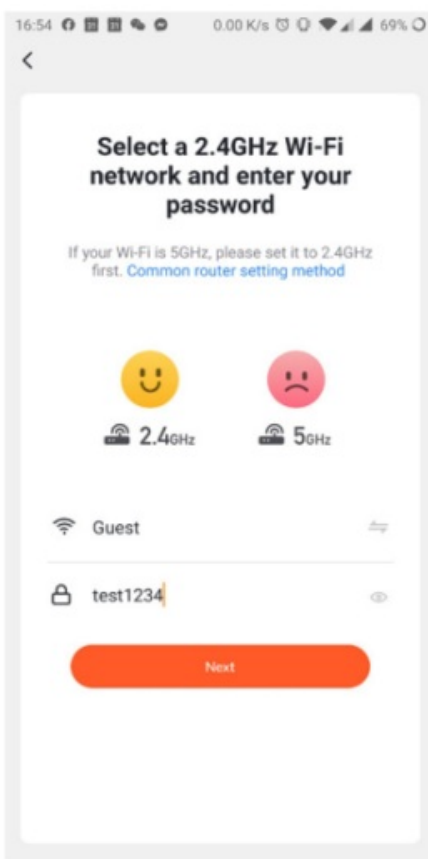
1. Press the “+” symbol in the upper right corner of the application.



2. Next, select the "Door Sensor (WIFI)" from the "Security&Sensor" category, **alternatively** you can use the "Auto Scan" function at the top of the window.



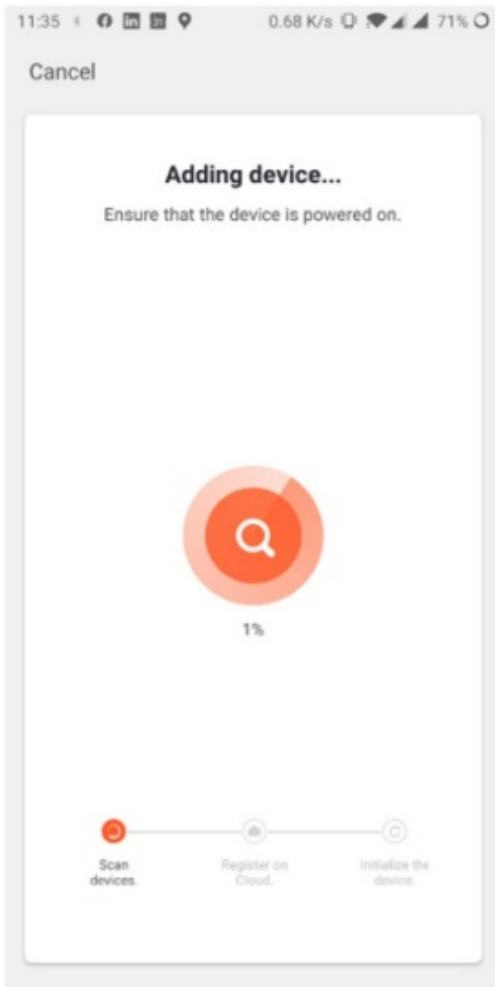
3. Enter the password for the currently connected Wi-Fi network and press “Next”.



5. Next, select the "Fast flashing" option - after choosing it, the device search will commence

4. **Important note:** If the LED on the device is not flashing, press the reset button for about 5 seconds. After that time, it should be flashing and the pairing process can be resumed.

5. The App searches for devices to add, the sensor should be as close to the smartphone as possible.



6. The product has been correctly connected, at which point the name of the appliance can be given according to our preference. We recommend that you test whether the device works correctly by moving the magnetic module away from the main module.
7. **Important note:** If the pairing process has failed, please repeat the whole process from the beginning by resetting the device as in point 6. During this procedure, it is recommended to bring the device as close to the phone as possible.

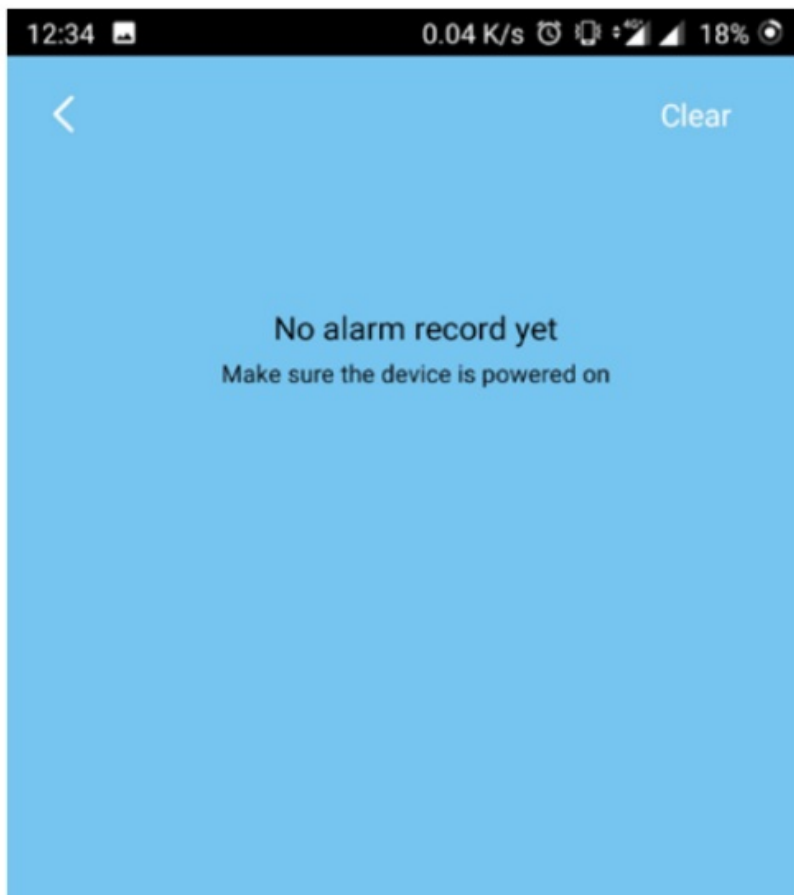
TuyaApp Features

Main menu of the device

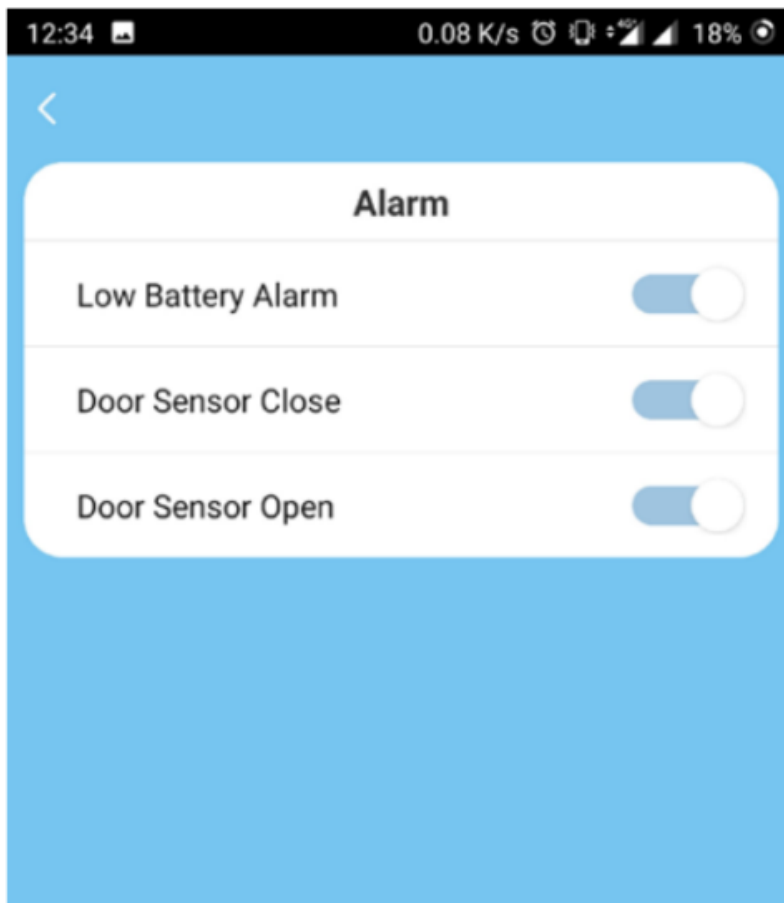
1. Device name
2. Status (closed/open)
3. History
4. Notification settings
5. Battery status



View history data



Notification settings



Technical specification

Dimensions	Main module	71 x 25 x 20 mm
	Magnetic module	36 x 10 x 17 mm
Power	Battery type	LR03-1.5 V (AAA)
	Supplied quantity	2 pcs
	Battery lifecycle	Up to 6000 sensor notifications
Wireless	Wi-Fi	2.4 GHz, IEEE 802.11b/g/n
Management	Remote control	Via TuyaSmart App
	Supported OS versions	iOS: 8.0 or newer Android: 4.4 or newer
Housing	Material	ABS

Troubleshooting

Problem	Possible reason	Solution
The device does not startup	Insufficient power supply	Ensure that the batteries are inserted correctly or that they are not depleted
The device's LED stopped flashing but the sensor has not been added to the TuyaSmart App	The pairing process was unsuccessful	Reset the sensor by pressing the reset button for at least 5 seconds and start the process of adding a new device in the application again
The device does not send notifications when doors are opened/closed	Inadequate Wi-Fi coverage	Ensure that Wi-Fi connectivity is available at the sensor's location – Minimum 2 bars are required for proper operation
The device does not send notifications when doors are opened/closed	Hardware error	Remove the device from the target location, and then remove and re-insert the batteries
When adding a device, Tuya Smart continuously prompts you to enable Wi-Fi connection	No active Wi-Fi on the phone	The pairing of the device will only be possible if the smartphone is connected to a 2.4 GHz Wi-Fi network band

Warranty

The following Lanberg product is covered by a 24-month warranty from the moment of the purchase. It does not apply in case of defects and faults resulting from improper use and handling (not in accordance with this manual). Mechanical damages are the basis for rejecting the warranty claim.

Symbol description


The use of the WEEE symbol (crossed-out wheellie bin symbol) means that this product cannot be treated as household waste.

Proper disposal of used equipment avoids risks to human health and the environment, resulting from the possible presence of hazardous substances, mixtures, and components in the equipment, as well as, improper storage and processing of such equipment. The selective collection also allows you to recover materials and components, from which the device was manufactured. For more information about the recycling of this product, please contact the retail outlet, where the product was purchased, or request information from the local authority.



www.lanberg.pl

Documents / Resources

	<p>Lanberg SM01-DS01 Smart Door & Window Sensor [pdf] User Manual SM01-DS01, Smart Door Window Sensor, SM01-DS01 Smart Door Window Sensor</p>
---	---

References

- [Peryferia do rozbudowy sieci aktywnej i pasywnej | lanberg.pl](#)